



Sony Alpha ILCE-6000 battery cover plate repair

Repairing the battery's backplate without replacing the full cover, removing a screw, disarming the camera or voiding the warranty.

Written By: Rodolfo Didier

Sony ILCE-6000

Reparar la chapa de la puerta de la batería y tarjeta de memoria.



INTRODUCTION

We'll only replace the metal plate of the battery cover without having to replace the full cover.

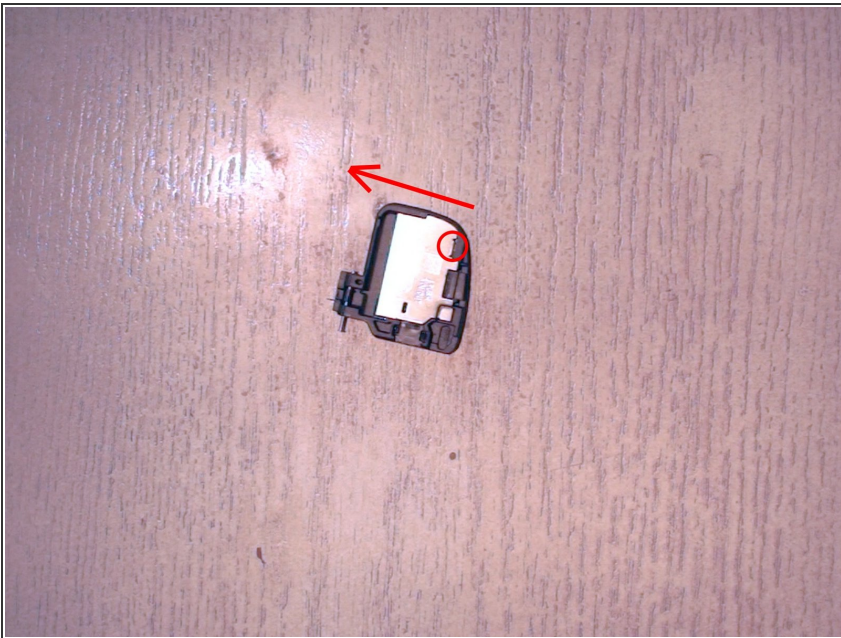
By replacing only the metal plate, there's no need to disassemble the camera, which would void the warranty on the product.

Step 1 — Get the Spare



- As they do not sell the plate alone, it is necessary to buy the complete door, I did it on eBay.com

Step 2 — Remove the metal lid of the new door



- Since we received the spare part, we removed the plate from the new door, for this we put a very small flat screwdriver in the marked slot and pushed towards the side of the hinge.

Step 3 — We put the pin in the original door in the camera



- We take the pin (safe) of the new door and place it in the original door in the chamber.

Step 4 — We cover the pin with the metal door



- We put the metal plate on the original door and ready.

To reassemble your device, follow these instructions in reverse.