



# Revlon 473 Shell Replacement

Written By: Jessica Leyva





## TOOLS:

- [Phillips #2 Screwdriver](#) (1)
-

## Step 1 — Shell



⚠ Before disassembly, make sure that the device is unplugged.

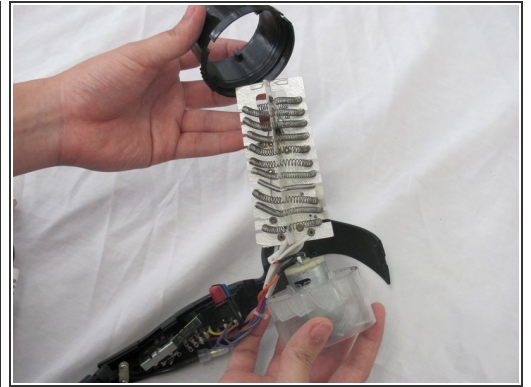
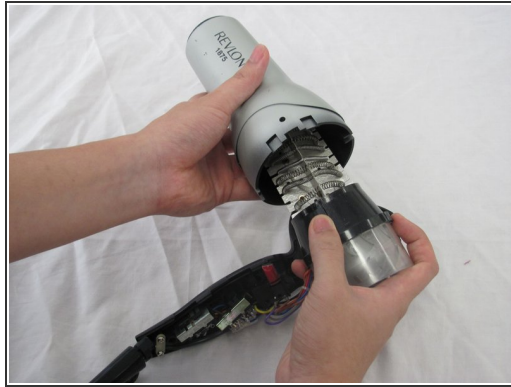
- Remove the two 17.83 mm black screws located on the handle.

## Step 2



- Separate the shell from the main component.
- Check to ensure each piece is free from debris.

## Step 3



- Remove the casing from the heating element.
- ⓘ For reassembly, reattach the silver casing before the black cover.

To reassemble your device, follow these instructions in reverse order.