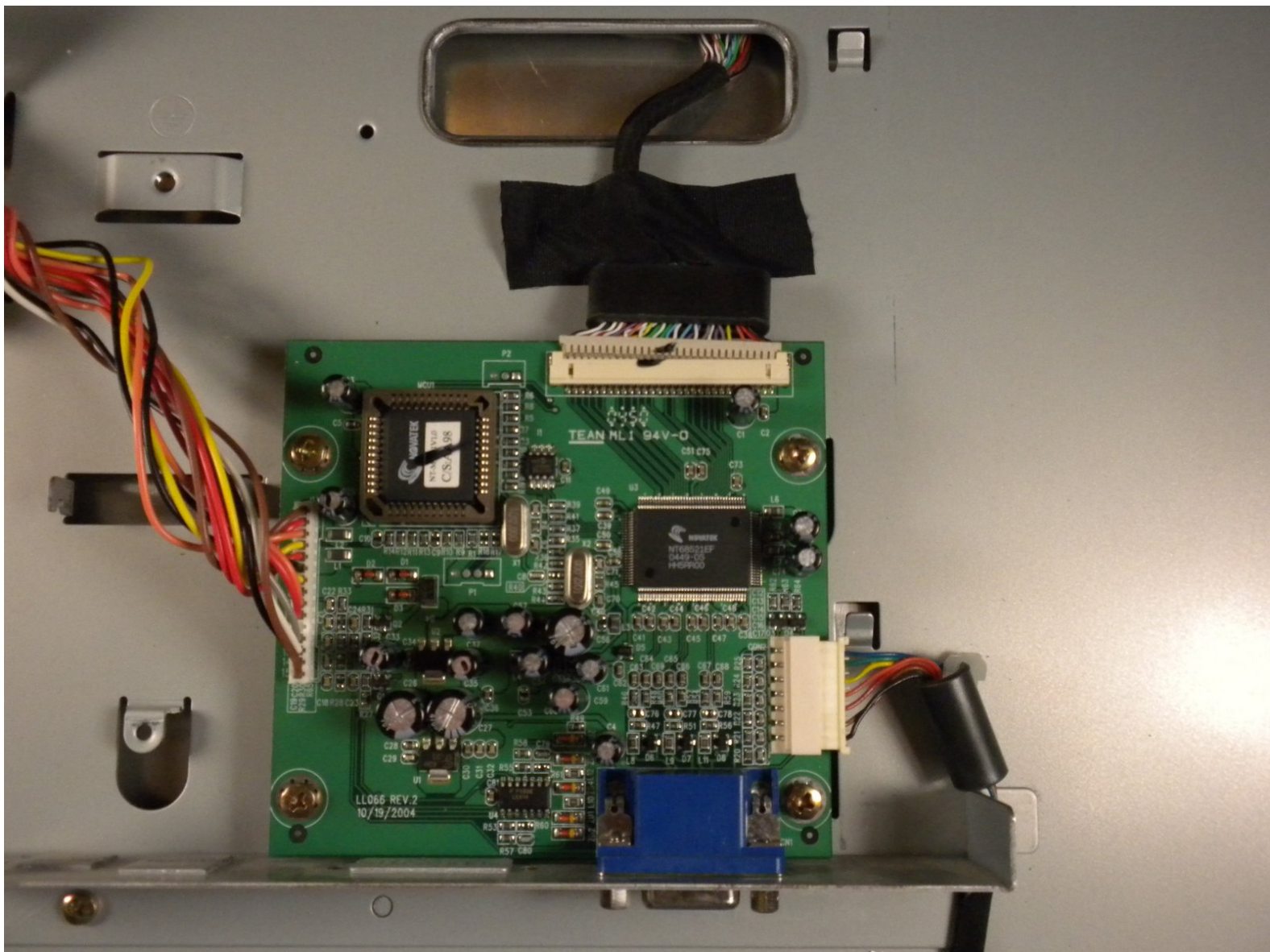




# Sceptre X9 Komodo VII Video Motherboard Replacement

Written By: David Taylor

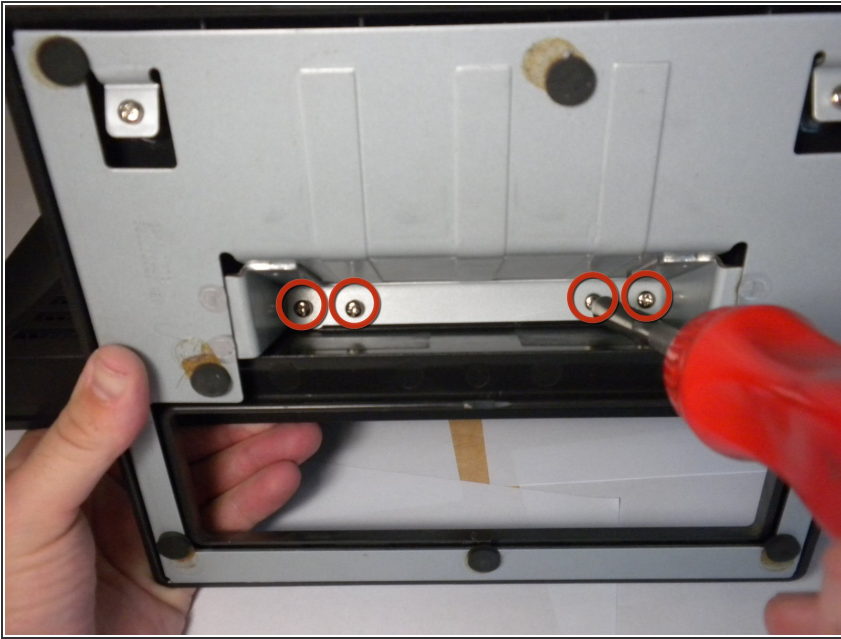




## TOOLS:

- [2.0mm Flathead Screwdriver](#) (1)
- [8" Needle Nose Plier](#) (1)
- [iFixit Opening Tool](#) (1)

## Step 1 — Stand



- Place the monitor face down.
- Remove the four 11.5mm screws with a #2 Phillips screwdriver.
- Remove the stand by pulling it out.

## Step 2



- Remove two 11.5mm screws with a #2 Phillips screwdriver.
- Remove the plastic bar.

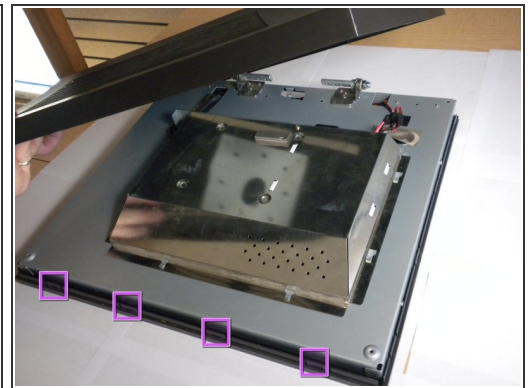
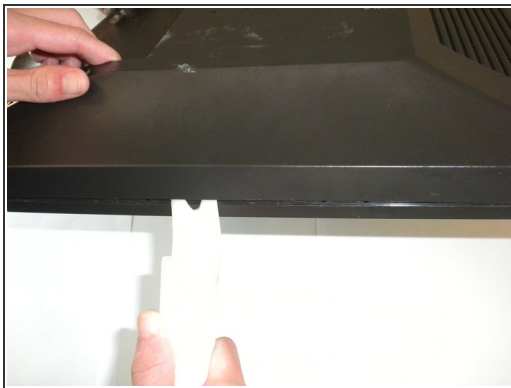


## Step 3 — Board Cover



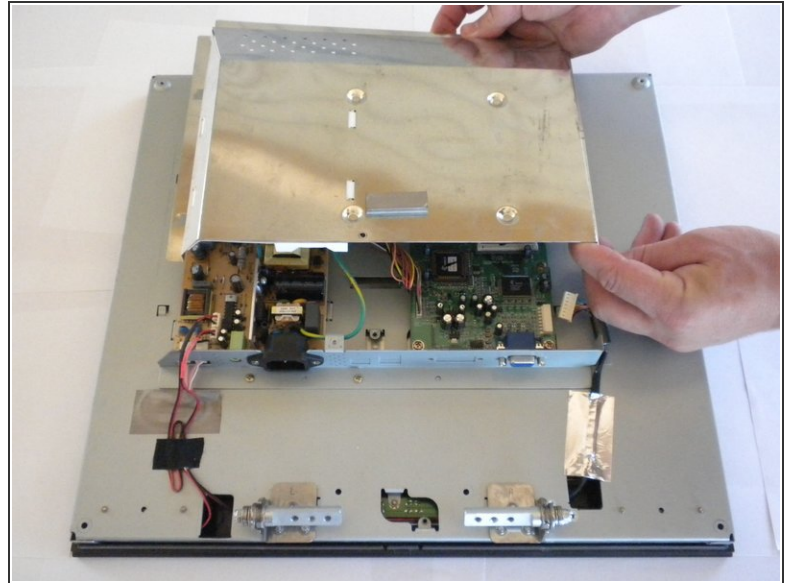
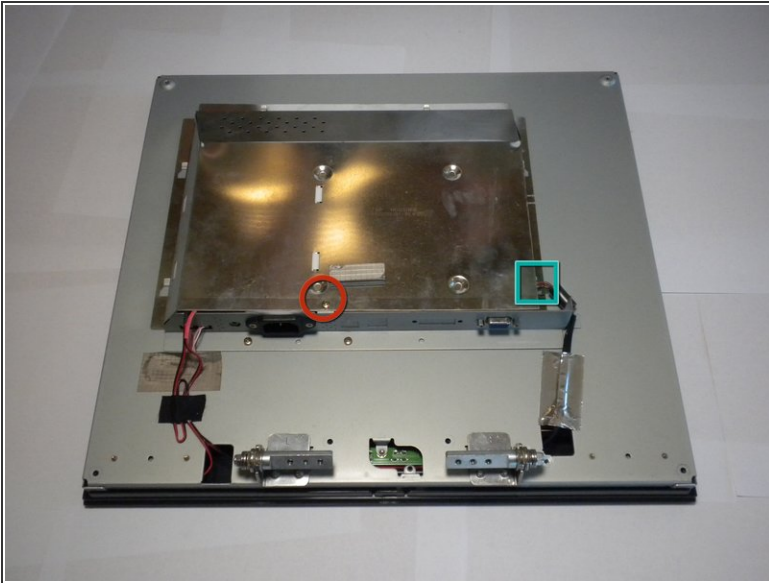
- Using a #2 Phillips screwdriver, remove the six 7mm screws at the circled locations.

## Step 4



- Pry the monitor using the plastic opening tool to release the clips holding the cover on.
  - ❗ There are four clips on each side, four on the top, and one on the bottom.
  - ❗ You may hear a loud snapping noise when releasing the clips. Do not be alarmed, it is natural.
- Once all the clips have been released, remove the cover by pulling it up.

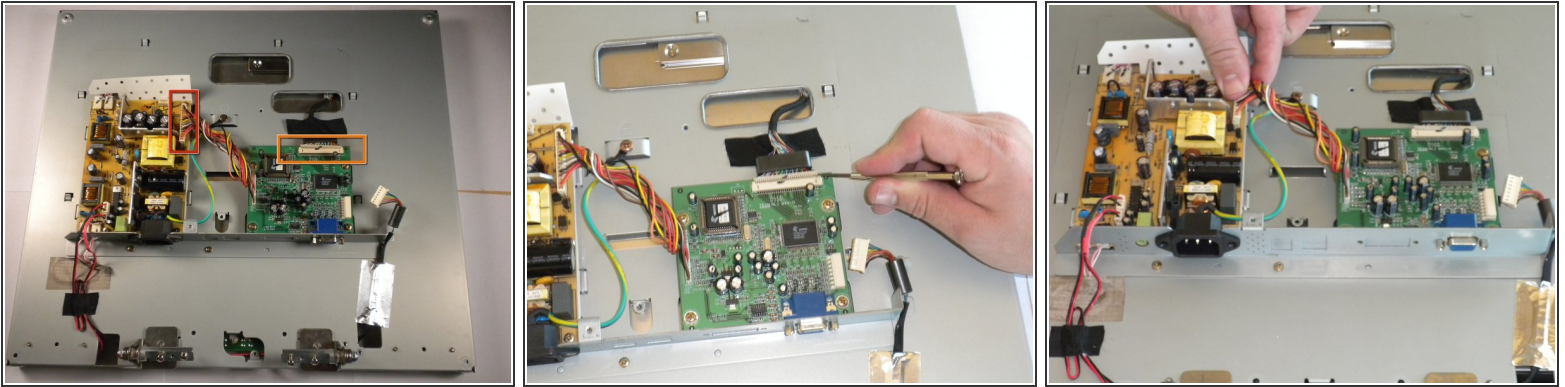
## Step 5



- Using the #2 Phillips screwdriver, remove the one 6mm screw.
- Unplug the indicated cable by pulling on the base.
- Slide the cover toward the top of the monitor.
- Remove the cover.



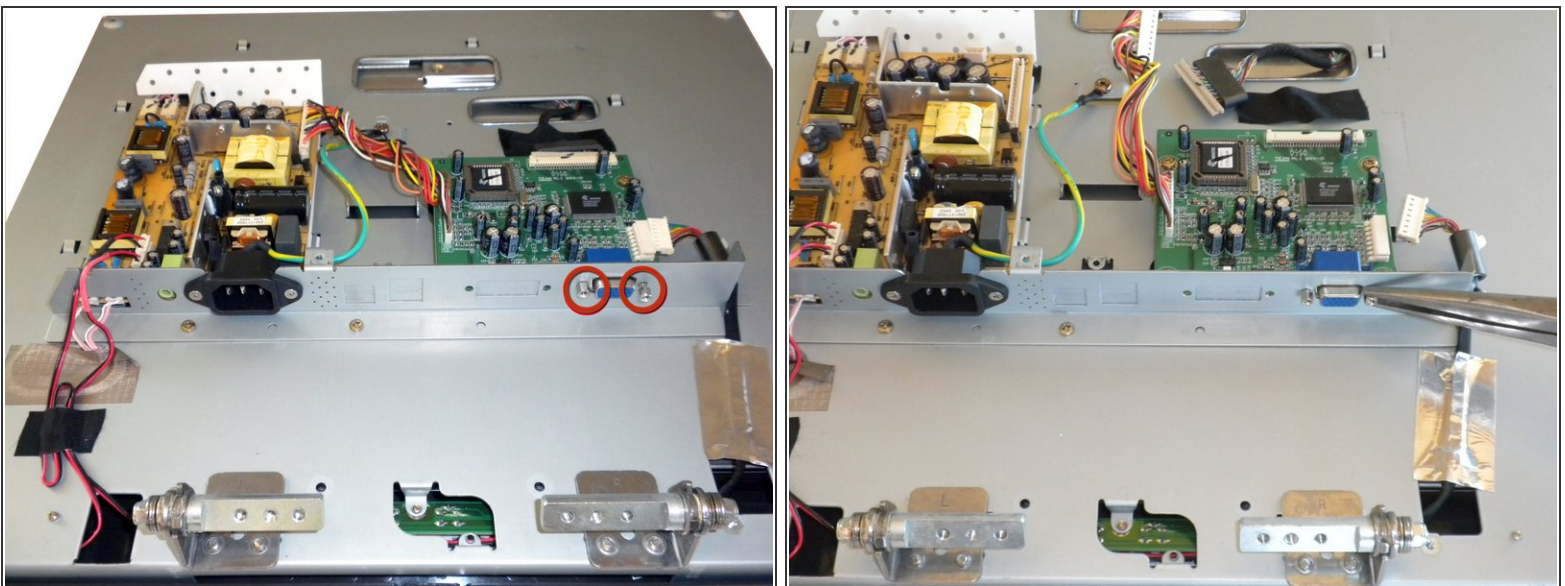
## Step 6 — Video Motherboard



**⚠ Use caution when removing the connectors as they can easily break when removing.**

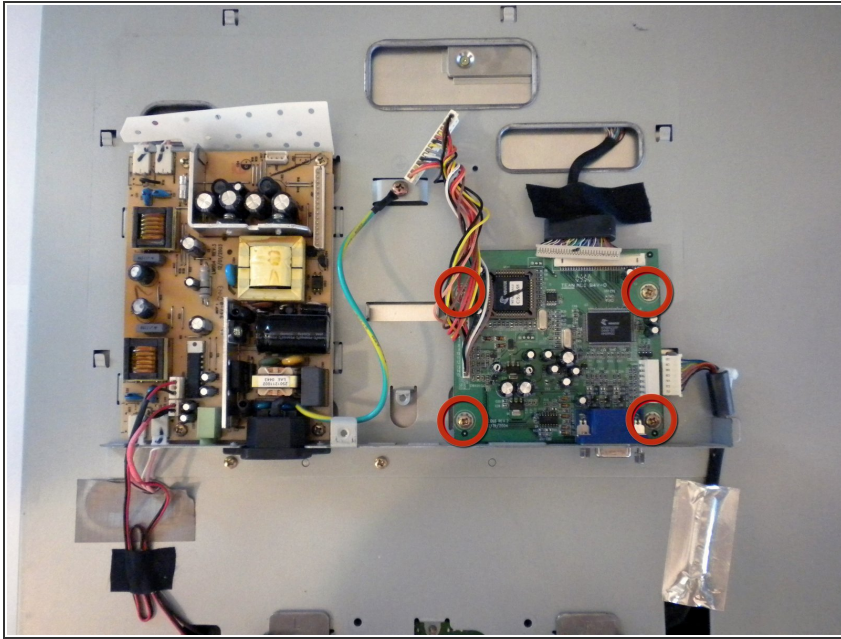
- Disconnect the multi-pin connector at the top of the board by firmly grasping the connector and pulling to the side.
  - Disconnect the multi-pin connector that runs between the video motherboard and the power supply motherboard. Firmly grasp the connector and pull straight up.
- i** A plastic opening tool can be used to assist in the removal of connectors.

## Step 7



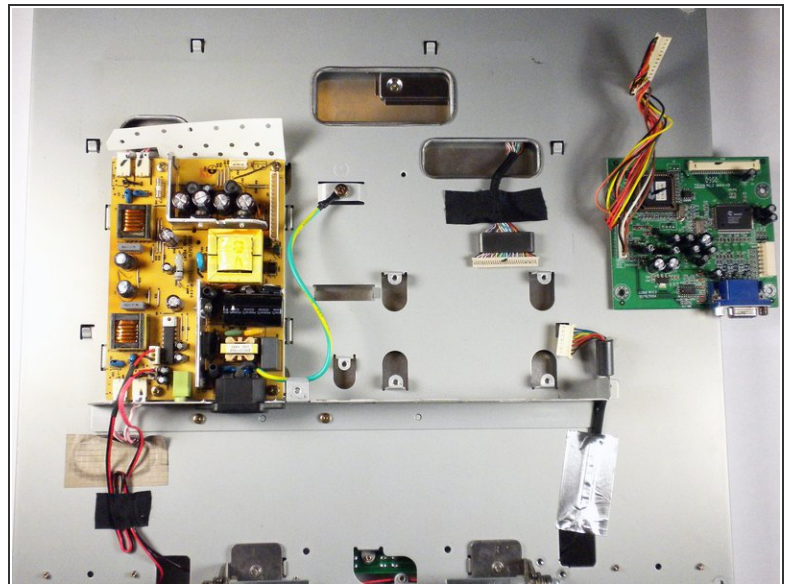
- Remove the two 3/16" hex head screws from the VGA connector. Use a pair of needle nose pliers if a wrench is not available.

## Step 8



- Remove the four 6.4mm #2 Phillips screws from the corners of the motherboard with a #2 Phillips screwdriver.

## Step 9



- Lift the motherboard straight up to remove it from the back panel.

To reassemble your device, follow these instructions in reverse order.