



# iMac Intel 20" EMC 2105 and 2118 AirPort Extreme Replacement

Replace a faulty AirPort card to regain...

Written By: Walter Galan



# INTRODUCTION

Replace a faulty AirPort card to regain wireless internet connectivity.

## TOOLS:

Phillips #1 Screwdriver (1)

Plastic Cards (1)

Spudger (1)

T6 Torx Screwdriver (1)

TR8 Torx Security Screwdriver (1)

## Step 1 — Access Door



- Loosen the two Phillips screws securing the access door to your iMac.

 Both screws remain captive within the access door.

- Remove the access door.

 **Before beginning the repair, unplug the computer and press and hold the power switch for 20-30 seconds, to discharge internal capacitors.**

## Step 2 — Front Bezel



- Remove the following screws along the lower edge of your iMac:
  - Three 6 mm T8 Torx screws
  - One 8 mm T8 Torx screw (Right side of the RAM slot on 2105)

### Step 3



- ① Re-orient your iMac so it sits upright on the stand.
- Insert a [plastic card](#) up into the corner of the air vent slot near the top of the rear case.
- Push the card toward the top of the iMac to release the front bezel latch.
- Pull the front bezel away from the rear case.
- Repeat this process for the other side of the front bezel.
- ① It may be necessary to apply several layers of duct tape to the top of the access card to aid in releasing the latches. Or use two cards for the additional thickness.
- If the bezel refuses to release, try lifting the lower edge of the front bezel slightly away from the rear case (detailed in the next few steps) and repeat the latch release process.



## Step 4



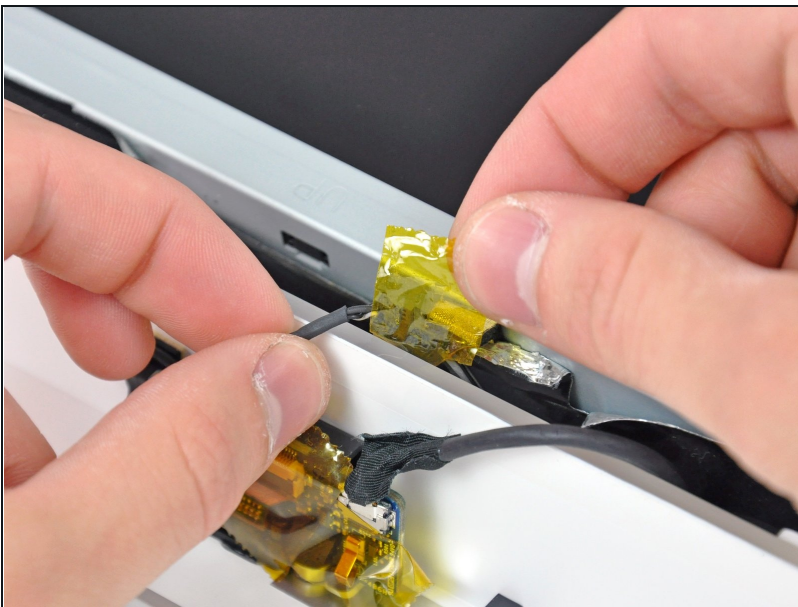
- Lay your iMac stand-side down on a flat surface.
- To lift the front bezel off the iMac, simultaneously:
  - Use your thumbs to press in the RAM arms and hold the iMac down.
  - Use your index fingers to pull the small bridge of material on the front bezel toward yourself.
  - Pull the front bezel up with your index fingers.
- Once the small bridge of material has cleared the RAM arms, lift the front bezel by its lower edge just enough to clear the bottom edge of the rear case.

## Step 5



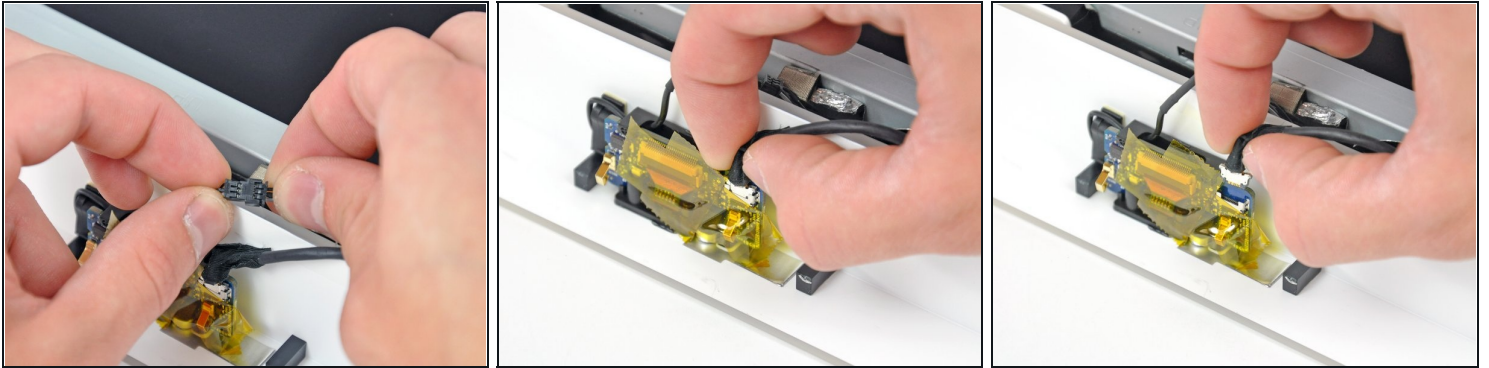
- Lift the front bezel off the rear case and rotate it away from the bottom edge of the iMac, minding the camera and microphone cables still attached to its upper edge.

## Step 6



- ⓘ If necessary, remove the strip of tape covering the microphone cable connector.
- ★ The microphone connector is located near the inside of top edge of your iMac.

## Step 7



- Disconnect the microphone cable.
- Disconnect the camera cable by pulling its connector away from the socket on the camera board.

**⚠ The camera cable connector and socket are delicate and easily bent. Remove with caution.**

## Step 8 — Lower EMI Shield



- Peel up the lower EMI shield from the rear case.
- ① It is only necessary to peel the shield up from three sides. Leave it attached to the display.
- ① If you happen to rip the EMI shield, use a piece of foil tape to cover the tear.

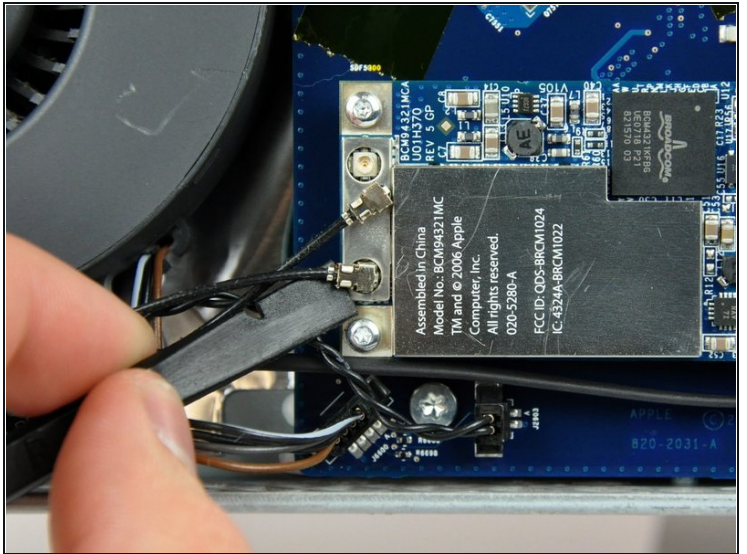


## Step 9



- Tape the EMI shield to the face of the display to keep it out of the way.

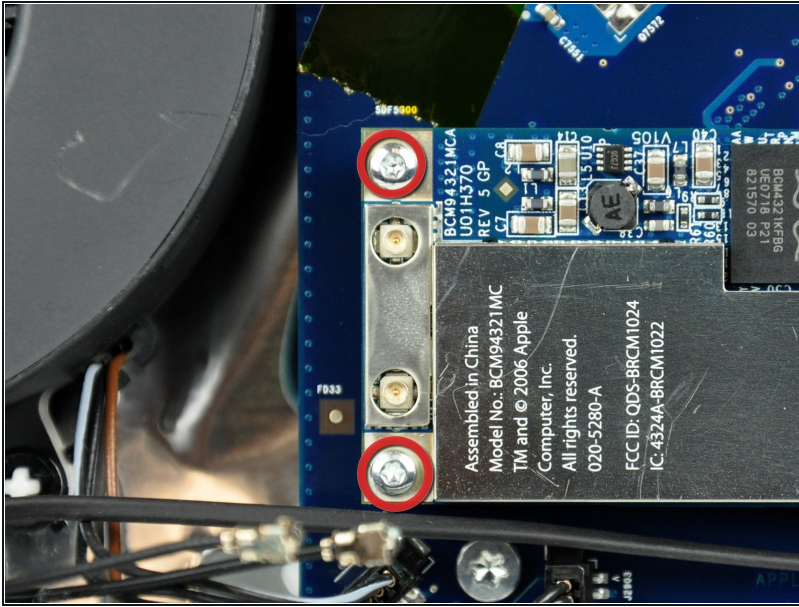
## Step 10 — AirPort Extreme



- Use the flat end of a spudger to pry both antenna cable connectors up off the AirPort card.

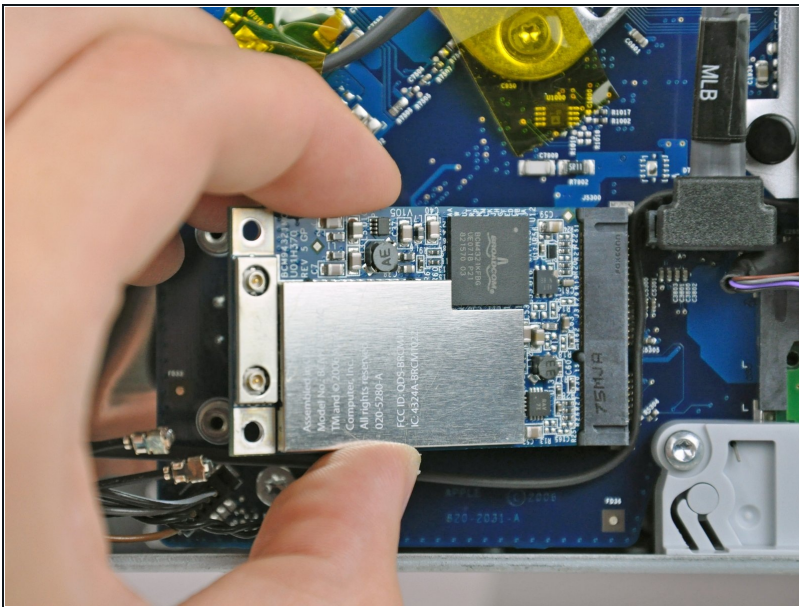


## Step 11



- Remove the two T6 Torx screws securing the AirPort card to the logic board.
- ⓘ At this point, the free end of the AirPort card should pop up slightly.

## Step 12



- Pull the AirPort card away from its socket on the logic board.

To reassemble your device, follow these instructions in reverse order.