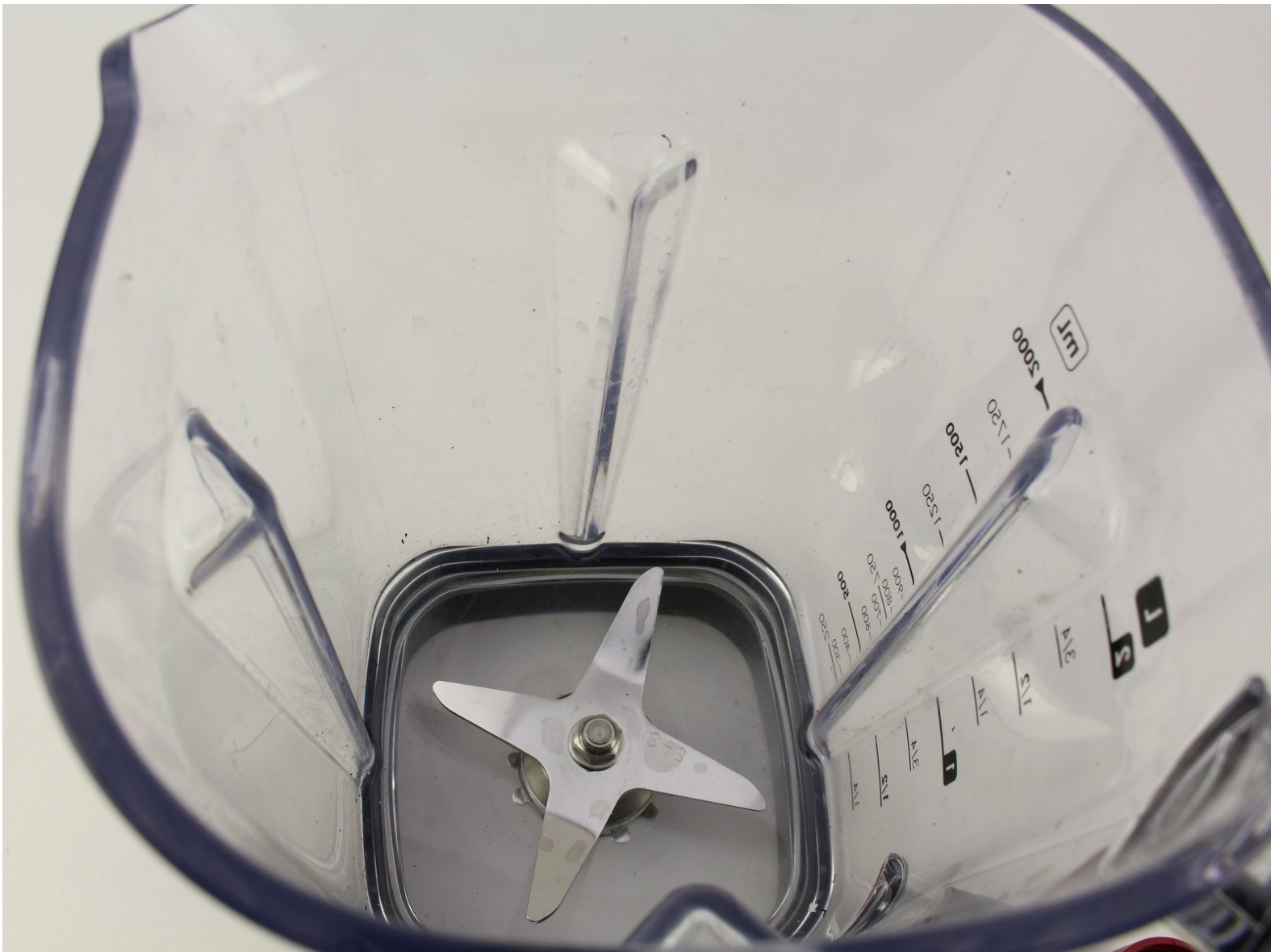




Wolf Gourmet WGBL100S Blades Replacement

This is a guide for the replacement of blades in the Wolf Gourmet High-Performance Blender.

Written By: Luke Kutz



INTRODUCTION

If your blender is not chopping food correctly, consider replacing the blades. The blades can be very sharp, so please take caution when proceeding with this guide.



TOOLS:

- [54 Bit Driver Kit](#) (1)
- H4.0
- [Slip Joint Pliers](#) (1)
 - [Adjustable Wrench](#) (1)
 - [Flathead Screwdriver](#) (1)



PARTS:

- [Wolf Blender Replacement Blades](#) (1)

Step 1 — Blender Blades



- Flip over the pitcher to expose the base of the blade assembly.
- Using the H4.0 Allen key from the 54 bit driver kit, attached to an impact driver, remove the socket head cap screw from the drive coupling.
- ❗ Apply a solvent to remove adhesive if necessary.

Step 2



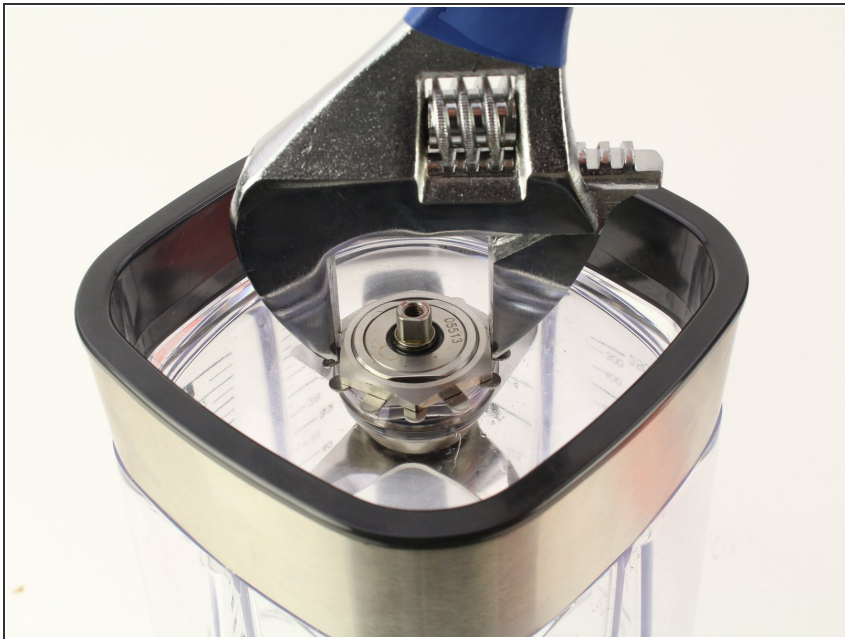
- Using a pair of pliers, pull of the drive shaft coupling.

Step 3



- Using a flat head screwdriver and a mallet, bend down the two tabs holding the large nut.

Step 4



- Remove the nut using a crescent wrench.

Step 5



- Push the blade assembly into the jar.
 - Remove the blades from the device.
- ⚠ Be careful not to cut yourself when handling the blades.

To reassemble your device, follow these instructions in reverse order.