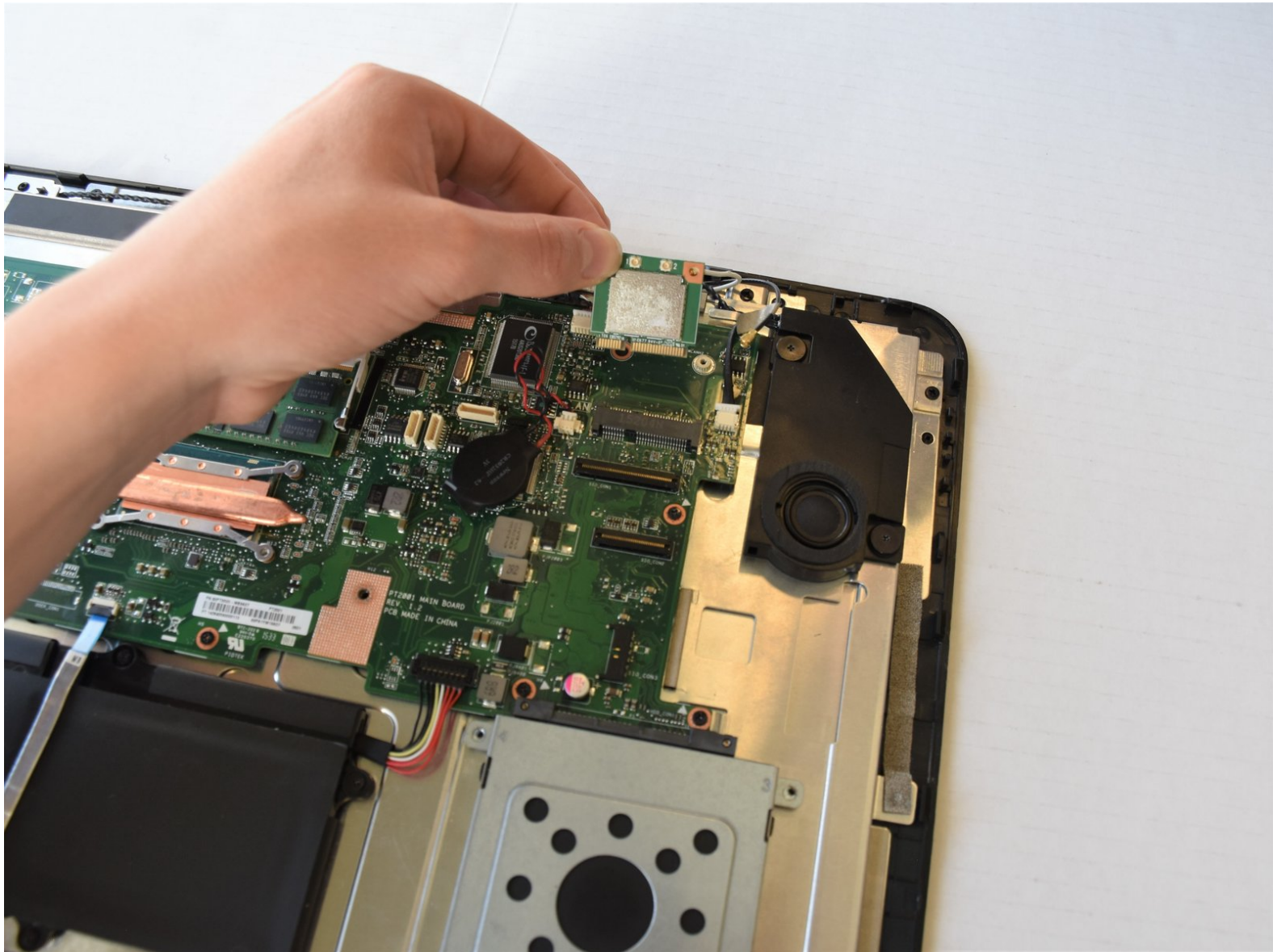




# ASUS Portable AiO PT2001 Wireless Card Replacement

How to replace a wireless card in the ASUS Portable AiO PT2001.

Written By: Erich Fenczik Warnock



# INTRODUCTION

This guide will show you how to remove the wireless card in a few easy steps.



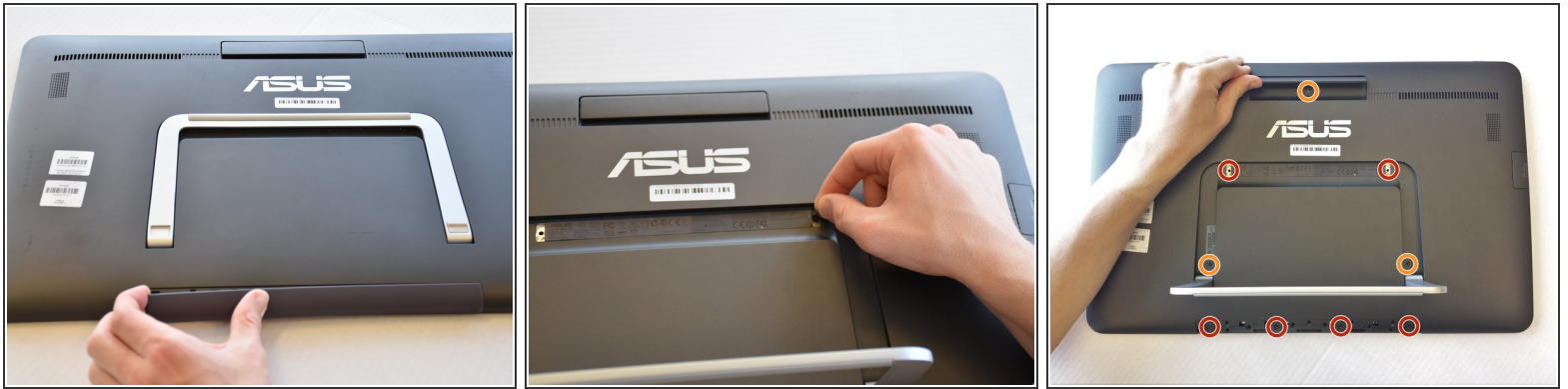
## TOOLS:

- [Spudger](#) (1)
- [Phillips #1 Screwdriver](#) (1)
- [iFixit Opening Tools](#) (2)

*At least one wide plastic opening tool.*

---

## Step 1 — Back Panel



- Remove the grey scuff guard at the bottom of the PC by pressing down on it, and pulling it away.
- Lift the hinge and remove the grey rubber tabs on either side of the PC's model information.
- Remove the two 7.62mm Phillips #1 screws beneath the rubber tabs under the hinge and the four 7.62mm Phillips #1 screws where the scuff guard was removed.
- Remove the two 4.74mm Phillips #1 screws under the hinge (near the hinge joints) and a 4.74mm Phillips #1 screw under the handle.

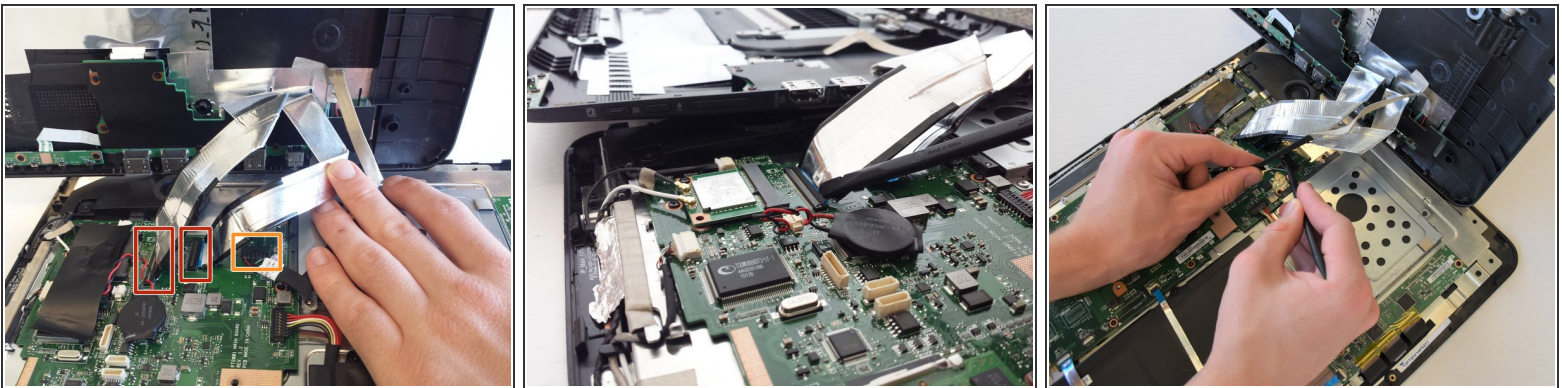


## Step 2



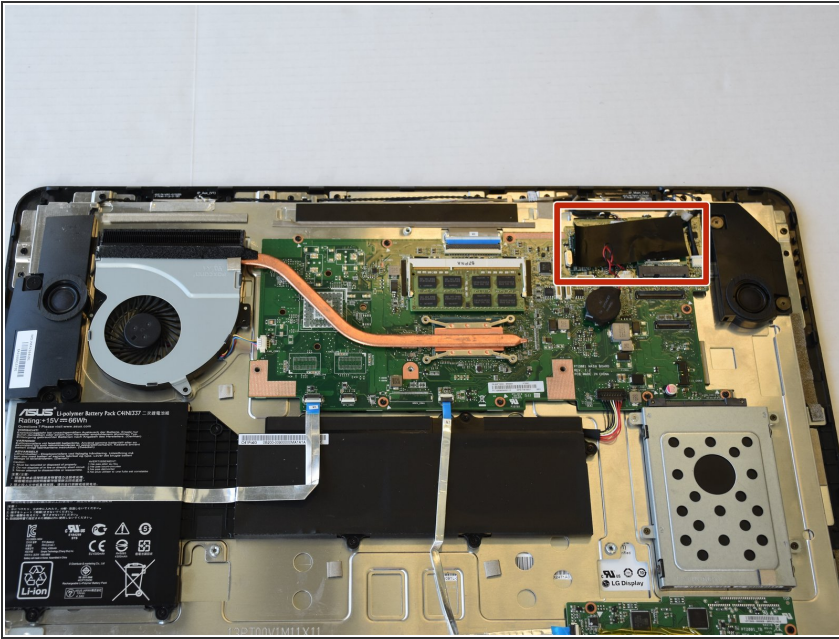
- Use 1-2 plastic opening tools or nylon spudgers to firmly pry open the back panel.
- ⓘ We recommend that you start prying the panel where the scuff guard was removed.
- ⓘ Prying the back panel will cause loud popping noises. This is just the sound of the clips that hold the back panel to the PC popping off.
- ⚠ Using excess force while prying can break the clips that hold the back panel and can damage the ports on the side of the PC.

## Step 3



- Disconnect the three cables connecting the back panel ports to the motherboard.
- Flip up the locking latch holding the two ribbon cables with a plastic opening tool and pull the cables out.
- Gently wiggle the third connector out of its socket.

## Step 4 — Wireless Card



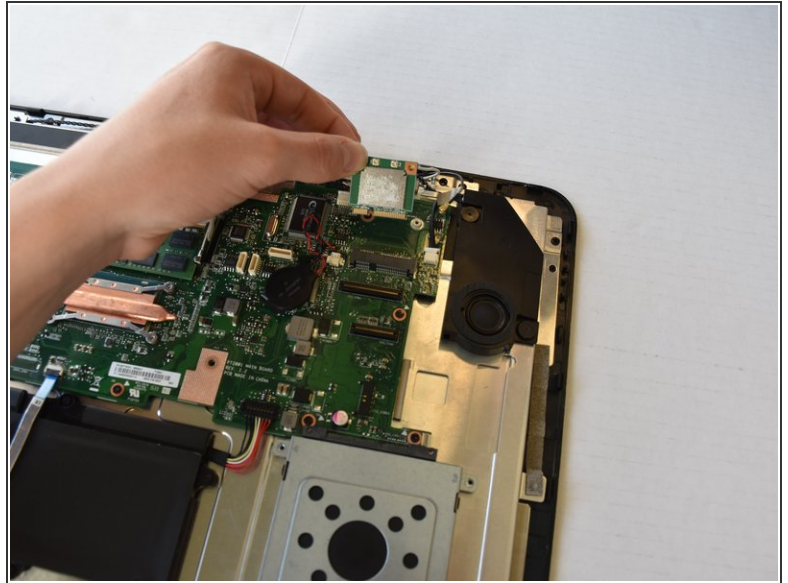
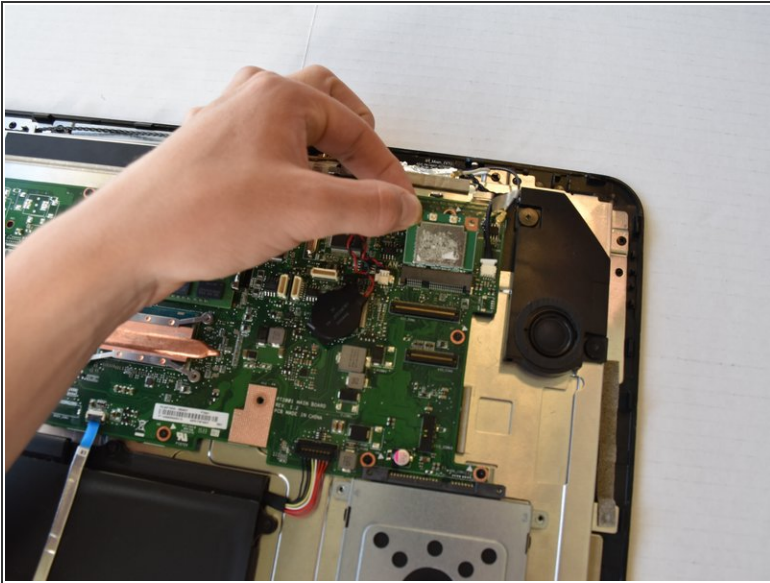
- The wireless card is on the corner of the motherboard next to the speaker. Remove the black tape to reveal the wireless card.

## Step 5



- Remove the 3.5 mm Phillips #1 screw from the wireless card.
- Remove the connectors by pulling straight up on their ends.

## Step 6



- Remove the wireless card from the casing by lifting up then pulling out.

⚠ The wireless card is fragile. Be careful when pulling it out of the casing.

To reassemble your device, follow these instructions in reverse order.