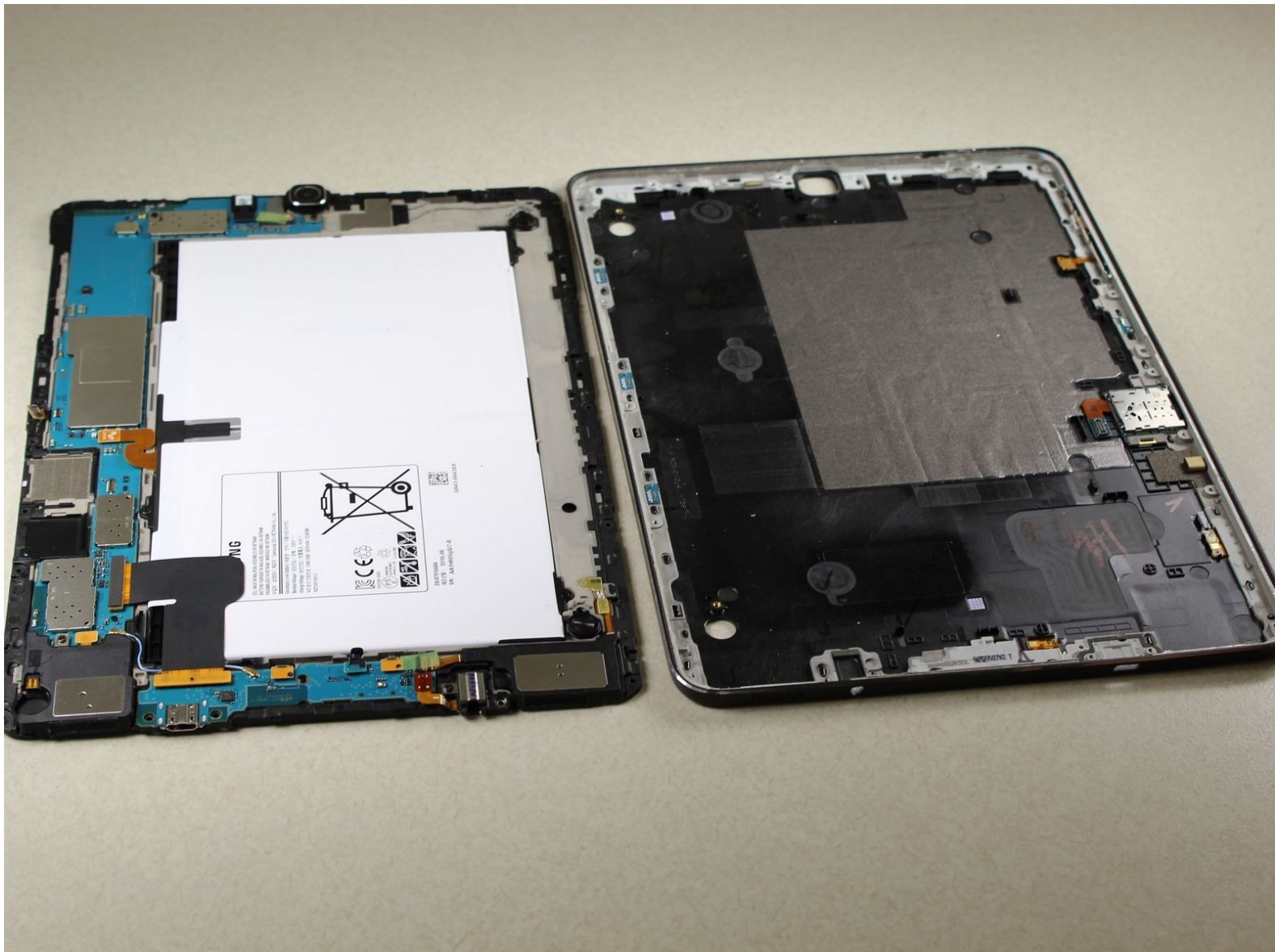




Samsung Galaxy Tab S2 9.7 SM-T813 Battery Replacement

How to replace a Samsung Galaxy Tab S2 9.7 SM-T813 battery.

Written By: Nash Elder



INTRODUCTION

The battery is essential to the function of your device. Replace the life of your device by following these simple steps.



TOOLS:

- [JIS #00 Screwdriver](#) (1)
- [Phillips #0 Screwdriver](#) (1)
- [iOpener](#) (1)
- [Suction Handle](#) (1)
- [iFixit Opening Picks set of 6](#) (1)

A set of 6 picks will suffice, but more picks will make removing the screen easier.

- [iFixit Opening Tools](#) (1)
- [Tweezers](#) (1)



PARTS:

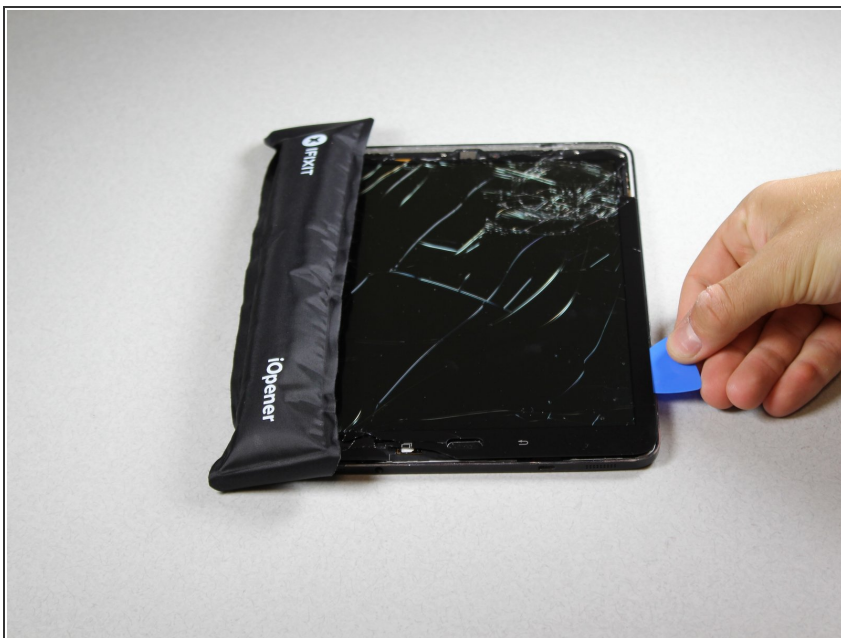
- [Galaxy Tab S2 9.7 Replacement Battery](#) (1)

Step 1 — Screen



- Heat the iOpeners in a microwave for 1-2 minutes.
- ⚠ The iOpeners will be hot. Use caution and hold the tabs on the ends.
- Place heated iOpeners on screen edges to heat the adhesive.
- ⓘ For more detailed instructions on how to use the iOpeners, please refer to the [iOpener Instructions](#).

Step 2



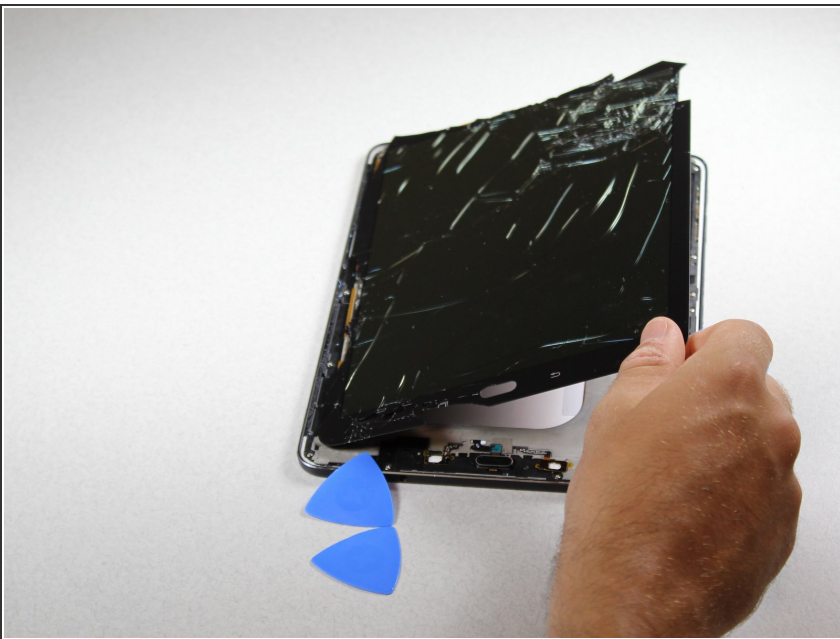
- Separate the screen assembly from the back by wedging the picks between the two components.
- Slide the picks along the edge and leave them holding the device open all around the edges.

Step 3



- Place suctioning device near the corner of the screen and gently lift up to create a gap between the front panel assembly and the back.
- Insert the picks to hold the two components apart once a gap is created.

Step 4



- Once all edges have been disconnected, carefully lift the screen off by pulling one side up.
- ⚠ Be careful not to cut yourself. Any broken glass from the screen will be sharp.

Step 5



- Using the tweezers, gently peel up on the silver tape covering the connector.

Step 6



- Use the plastic opening tool to get under the connector piece. This will allow you to remove the front panel assembly from the rest of the device.

Step 7



- Detach the connector from the inside of the device.
- Lift the screen to separate the front panel assembly from the rest of the device.

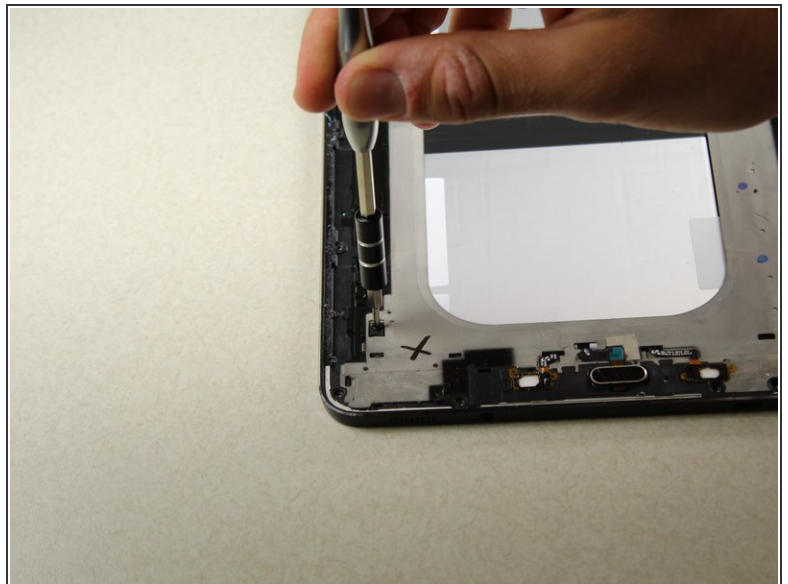
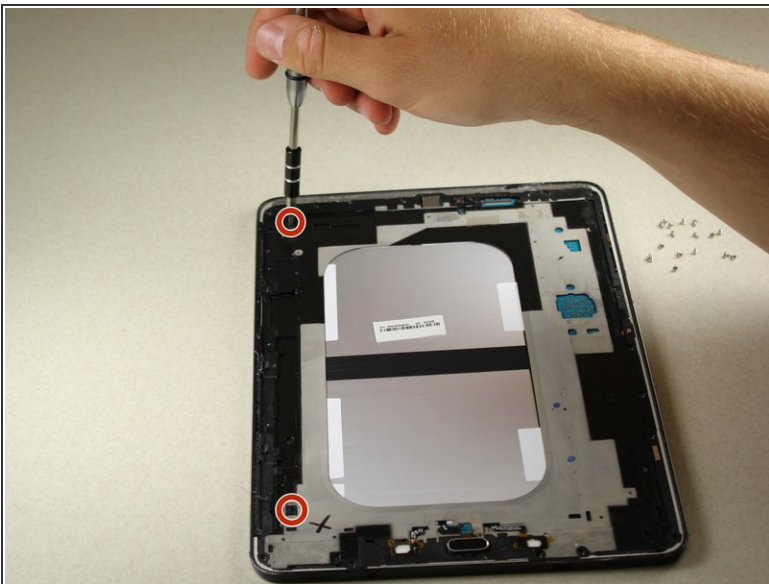
Step 8 — Central Panel



- Remove the 17 silver 3.0 mm Phillips head screws located around the edge of the device using the screwdriver.

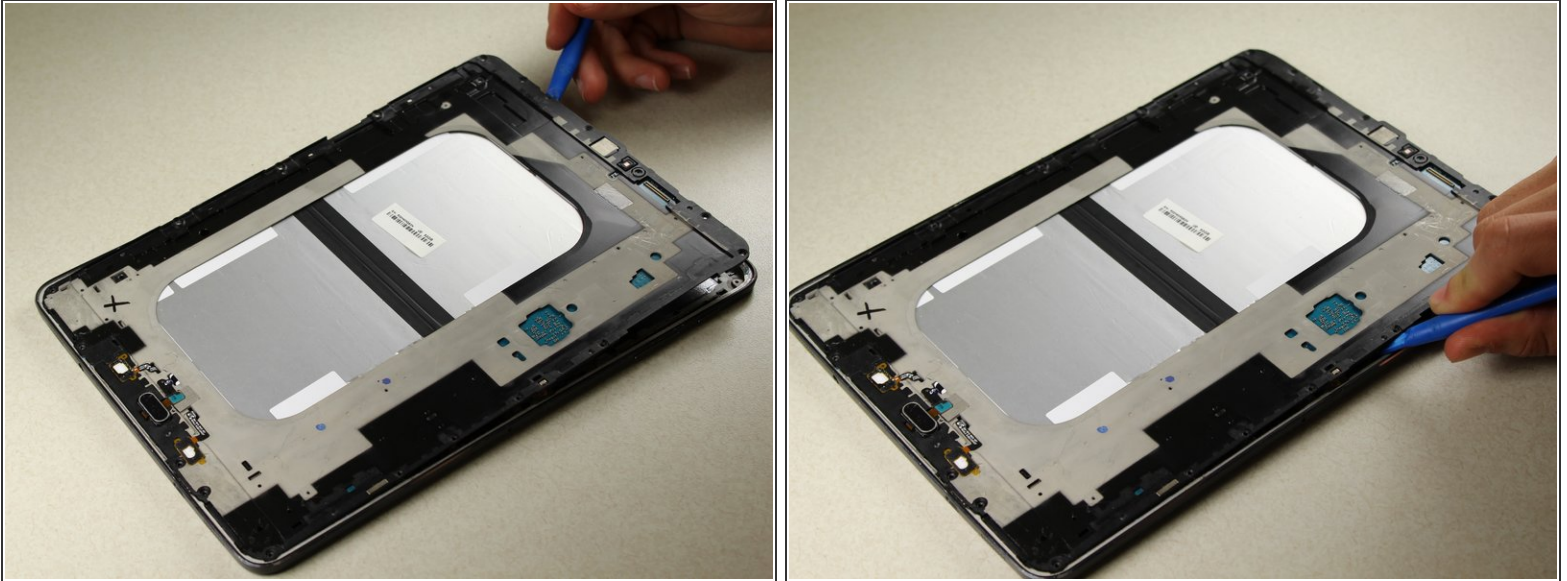
i For additional information on how to remove screws, please refer to [Screwdriver Best Practices](#).

Step 9



- Remove the 2 centrally-located black 3.0 mm Phillips head screws using the screwdriver.

Step 10



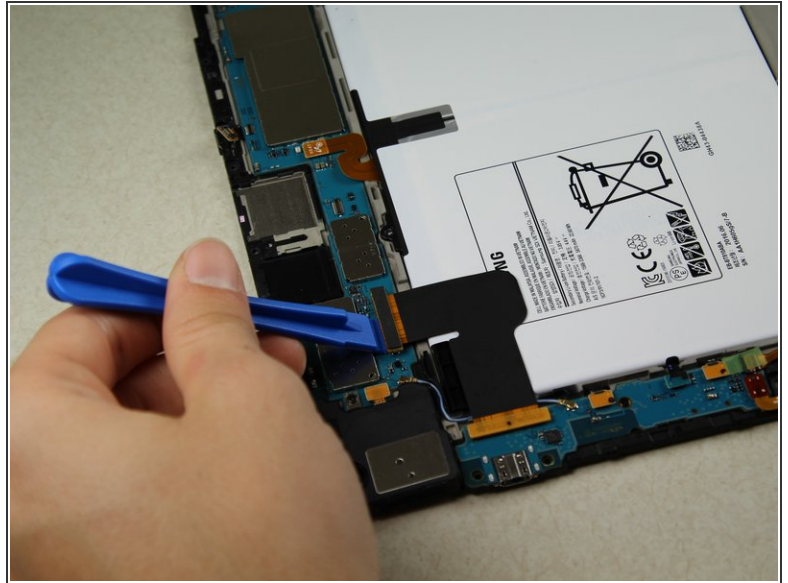
- Use the plastic opening tools to gently separate the middle panel from the rest of the device.
- Move the tool around under the edges until you can remove the panel by hand.
- ⓘ Popping/cracking noises are completely normal. These are the sounds of the panel separating from the rest of the device.

Step 11



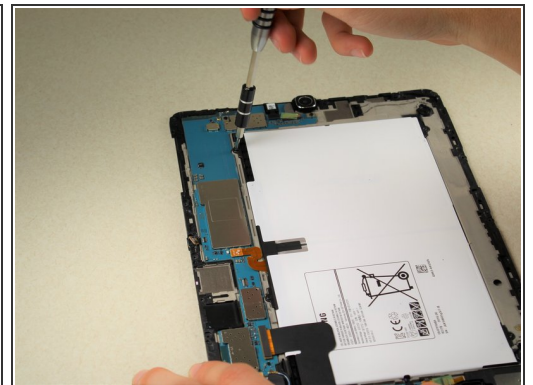
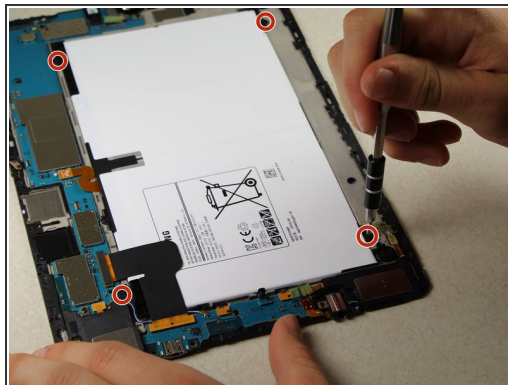
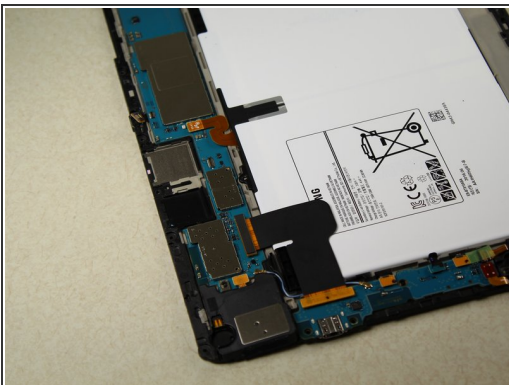
- Lift up the central panel starting from one corner to separate it from the rest of the device.
- Pull towards the top of the device as you lift out to ensure that the charging port connection is not damaged.

Step 12 — Battery



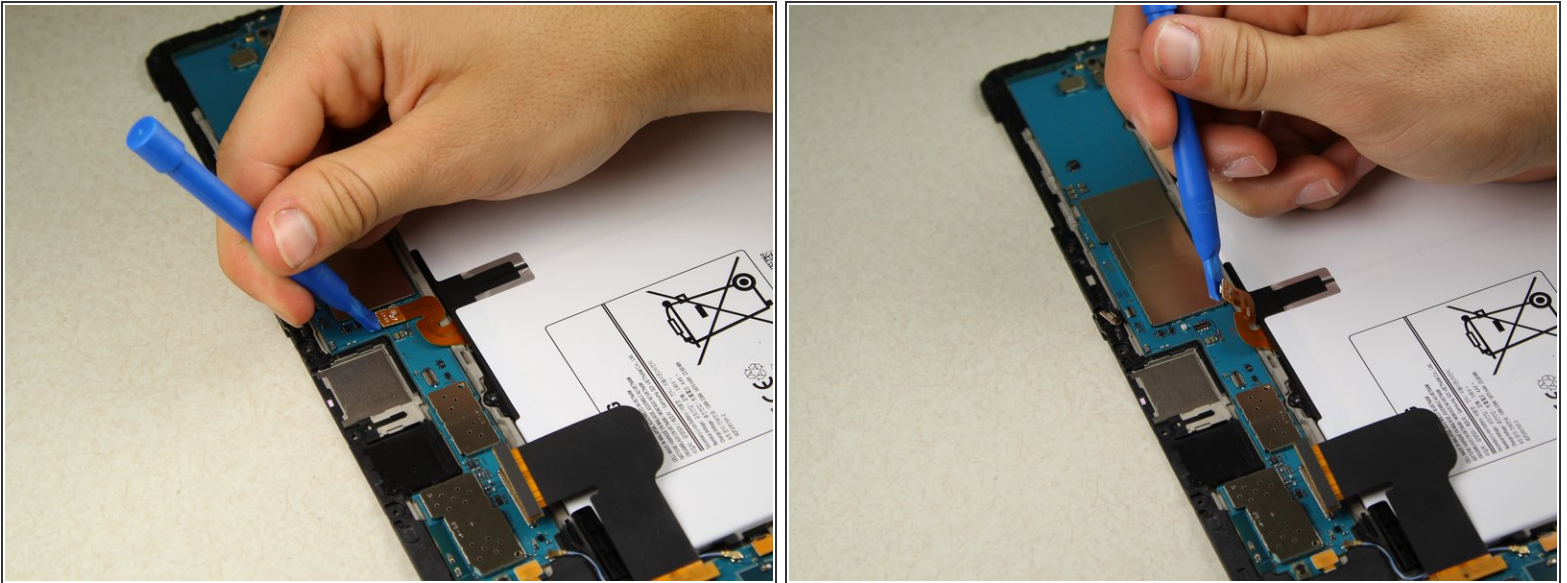
- Position the central panel so the battery logo is facing up.
- Gently place the larger plastic opening tool under the ZIF connector on the bottom left of the device.
- Lift up to detach this connector from the panel.

Step 13



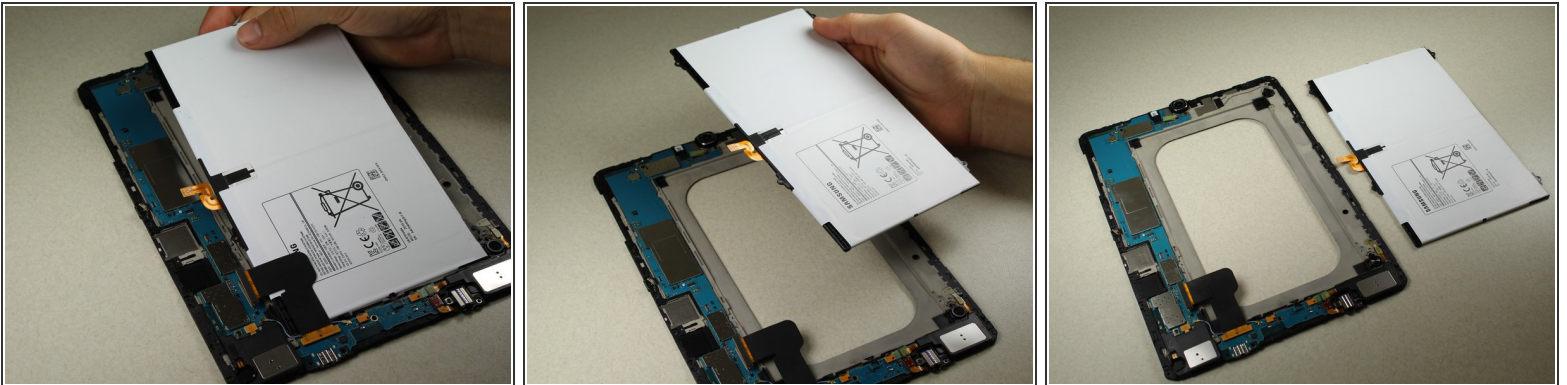
- Remove the 4 black 3.0 mm Phillips head screws from the corners of the battery housing using the screwdriver.

Step 14



- Gently place the larger plastic opening tool under the cable connector and lift up to detach the connector from the panel.

Step 15



- Gently lift the battery up from one corner using your hands to remove it from the rest of the central panel.

To reassemble your device, follow these instructions in reverse order.