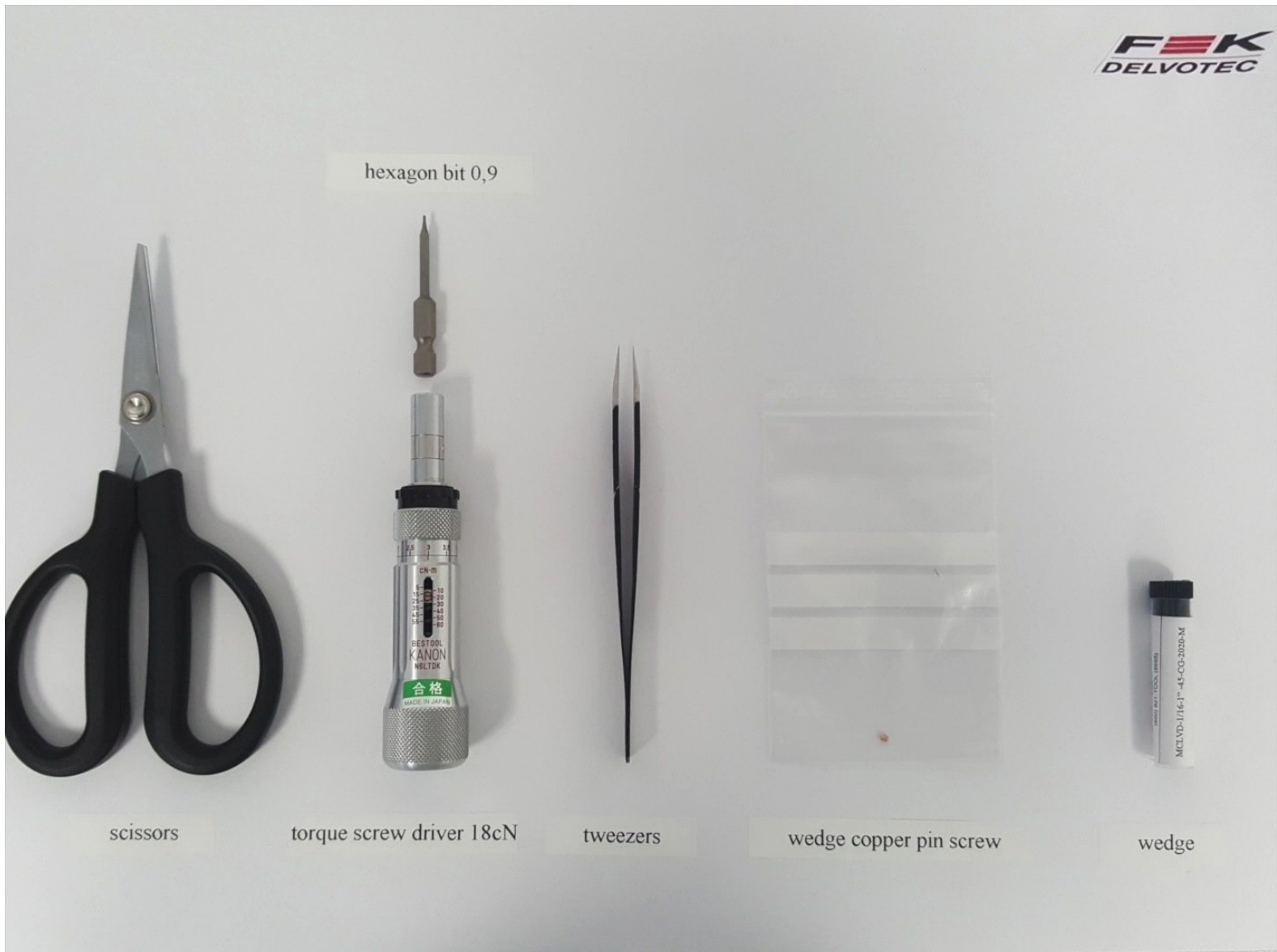




# How to change Tool for DeepAccess

Written By: Hans Panz





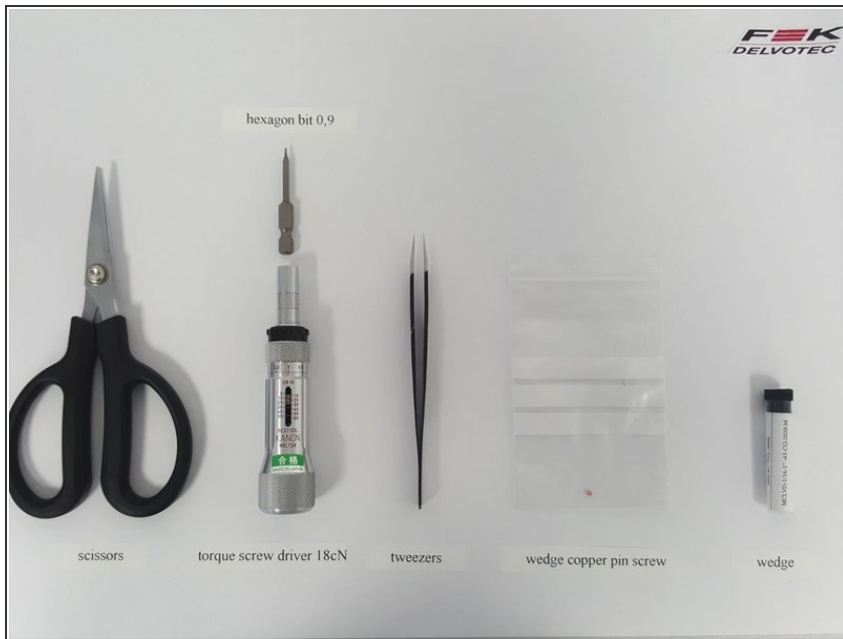
## TOOLS:

- [Torque Wrench](#) (1)

*18cN*

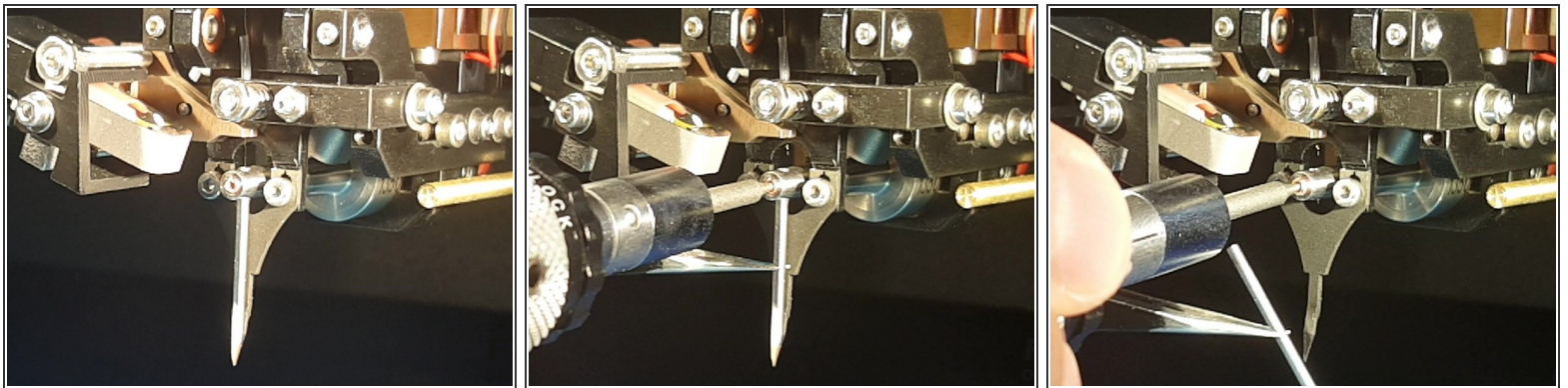
- [Utility Scissors](#) (1)
  - [Tweezers](#) (1)
-

## Step 1 — How to change Tool for DeepAccess



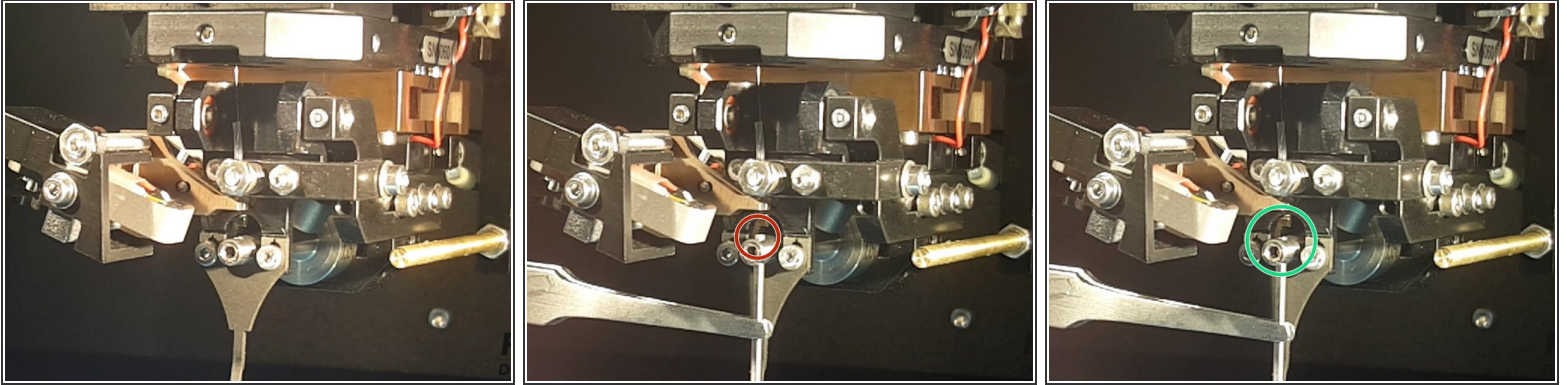
- Prepare Tools and replacement parts.

## Step 2 — Remove wedge from transducer



- Grab wedge with tweezers
  - Loosen the screw. (while holding the wedge)
- ⚠ Get rid of the copper screw. To NOT use it more than once

### Step 3 — Place the new wedge in the transducer.



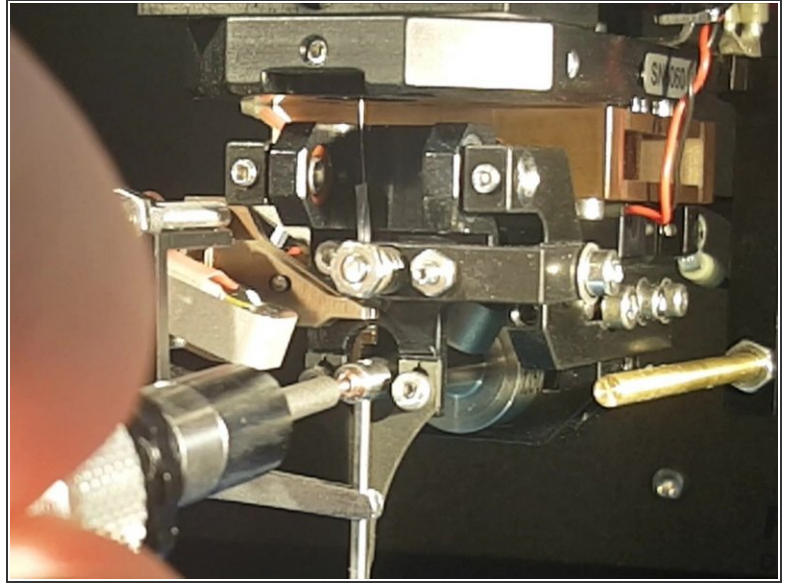
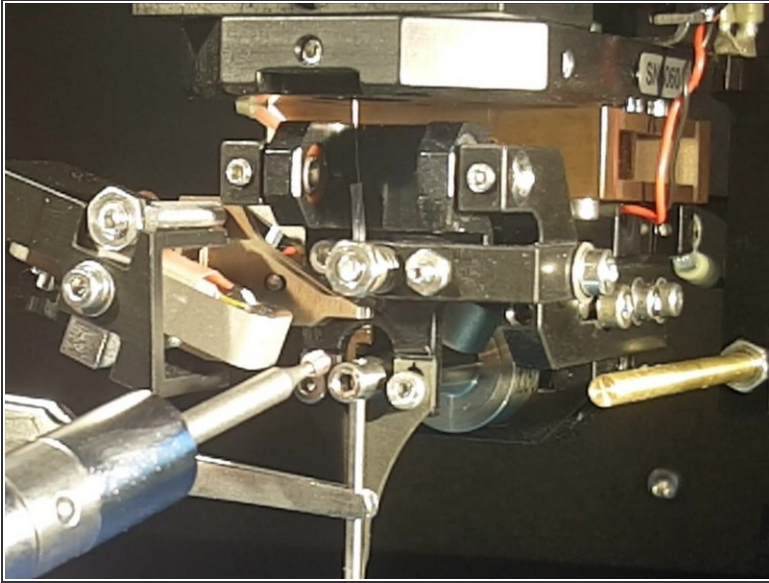
- Put the wedge in the transducer from below.

⚠ Take care, that the Tool Top is flush with the Transducer surface

- Correct Placement. Tool is flush with transducer.
- Incorrect Placement. tool is too high.

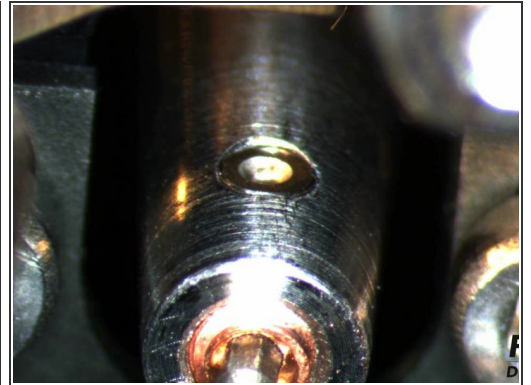
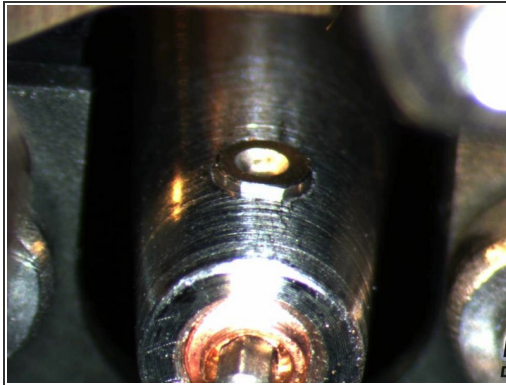


## Step 4 — Fasten the copper screw



- Fasten the screw lightly
  - Tighten the screw just so the wedge does not slip out of the transducer.
- i** in case of applying too much torque. Use a new screw and get rid of the old one.

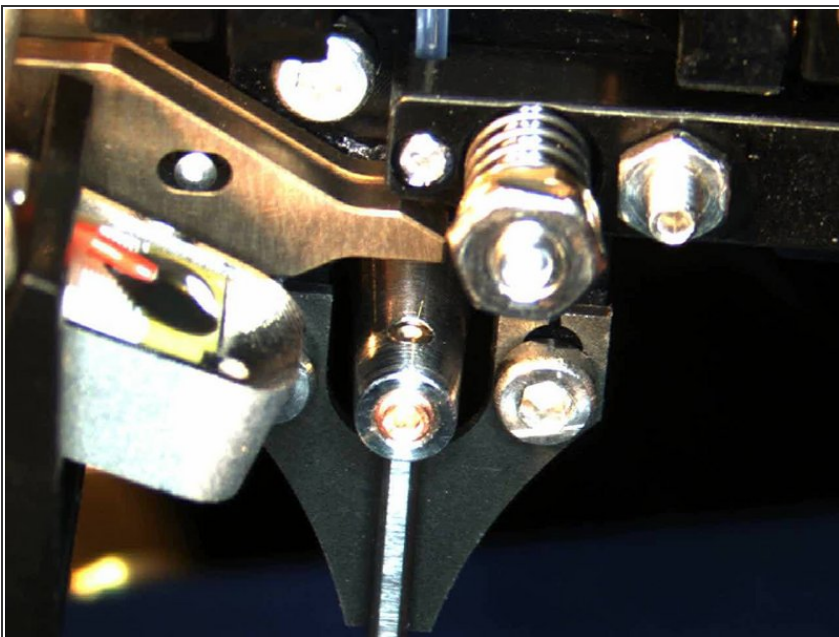
## Step 5 — Adjust wedge height with setting gauge



- Place gauge below Tool
- Loosen the screw so the wedge slides onto the gauge Lever.
- Lift the gauge up until in contact with the transducer horn.
- Now the Tool-Top should be flush with the Transducer-Horn
- Tighten the screw with the torque- wrench

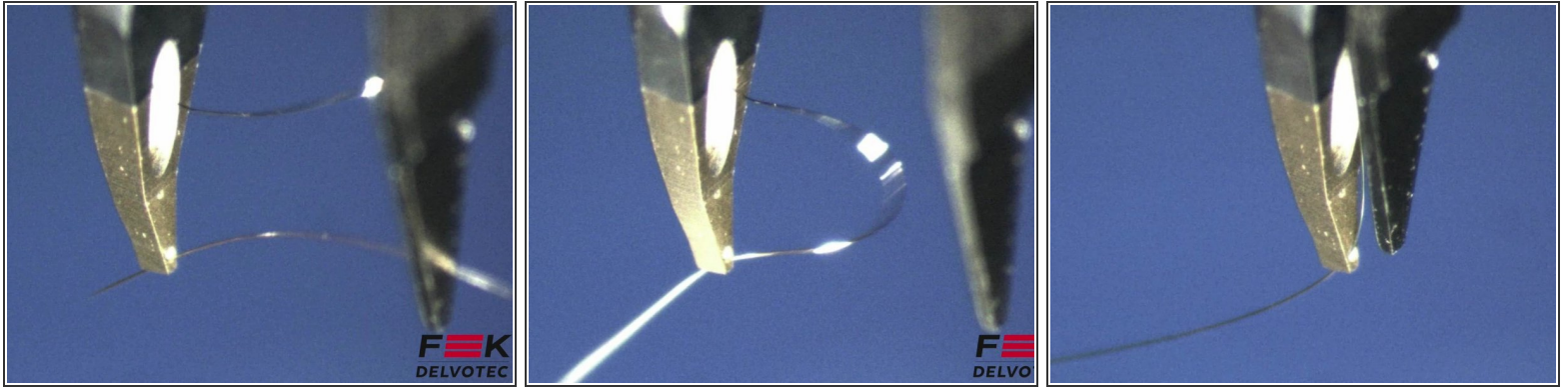
⚠ Use Torque wrench with 18cN limitation

## Step 6 — Thread wire back in wedge hole



- Use tweezers to push the wire down the wire hole, until it Ends some cm below the tool wedge.
- Use scissors to cut the (contaminated) Wire down to a length of about 1cm below wedge end.

## Step 7 — Thread Wire through Wedge-hole



- Use tweezers to thread the wire through the hole at the end of the wedge.
- After threading pull the wire some cm through the hole.

To reassemble your device, follow these instructions in reverse order.