



# Droid MAXX 2 Screen Assembly Replacement

This guide show how to replace the screen of the Motorola Droid MAXX 2 smartphone.

Written By: Burke Seggerman



# INTRODUCTION

This guide show how to replace the screen of the Motorola Droid MAXX 2 smartphone.



## TOOLS:

- [Spudger](#) (1)
  - [Tweezers](#) (1)
  - [T4 Torx Screwdriver](#) (1)
-

## Step 1 — Battery



- Insert a small pointed object into the hole on the sim card tray to eject the tray from the phone.

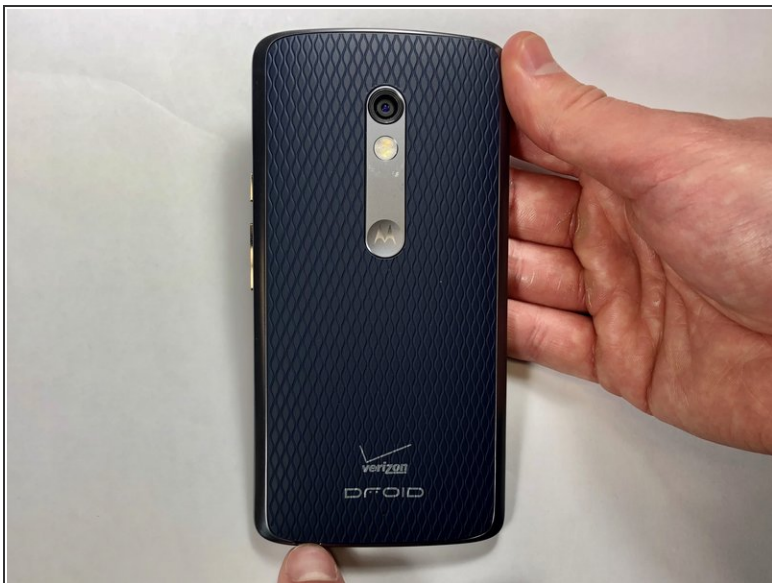
## Step 2



- Pull the sim card tray up out of the phone

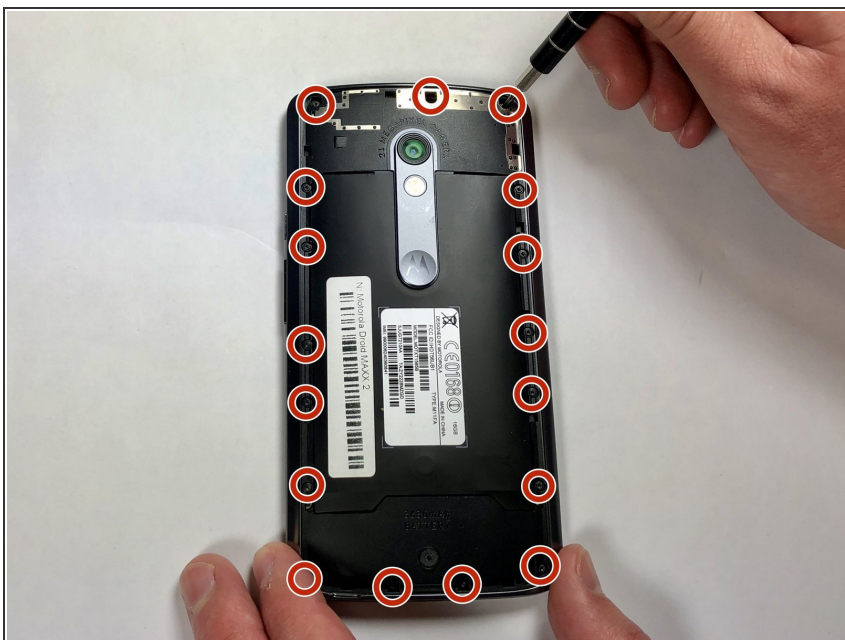


### Step 3



- Wedge your thumb into the indent located on the bottom left corner of the back cover and pull up to remove the back cover.

### Step 4



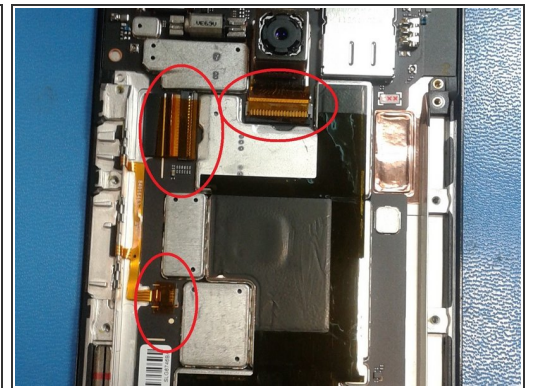
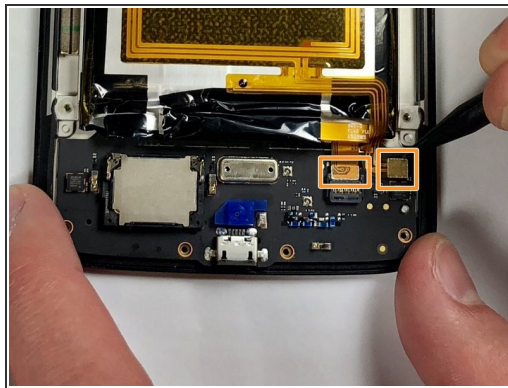
- Remove the seventeen 3.2mm Torx T4 screws from the mid-frame.
- ⓘ These may be T3 screws. If you are having trouble unscrewing these, stop and try a T3 bit.

## Step 5



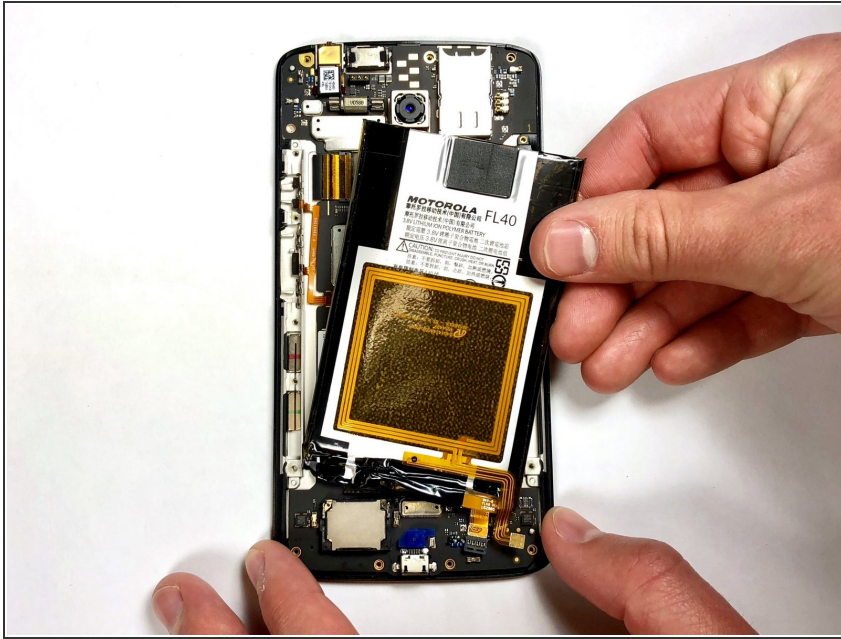
- Pull the mid-frame off of the phone.
- ⓘ Keep track of the on/off and volume buttons when you take the phone apart because they are likely to fall out when the halves are separated.

## Step 6



- Remove the static tape covering the two connectors.
- Use a spudger to disconnect the battery cables from the motherboard.
- If battery has adhesive, use heat gun for one to two minutes to loosen it. Be careful of the points outlined in red when prying it up. Use guitar picks or a spudger to gently lift the battery and separate the adhesive.

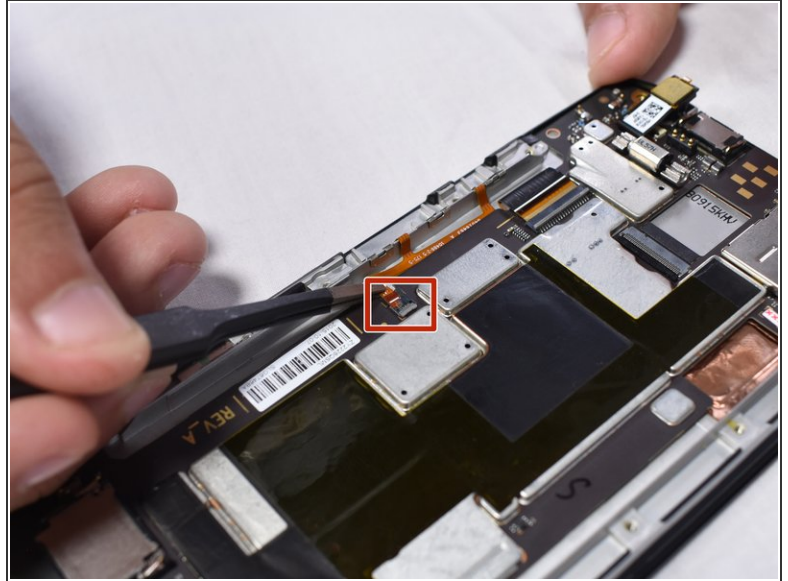
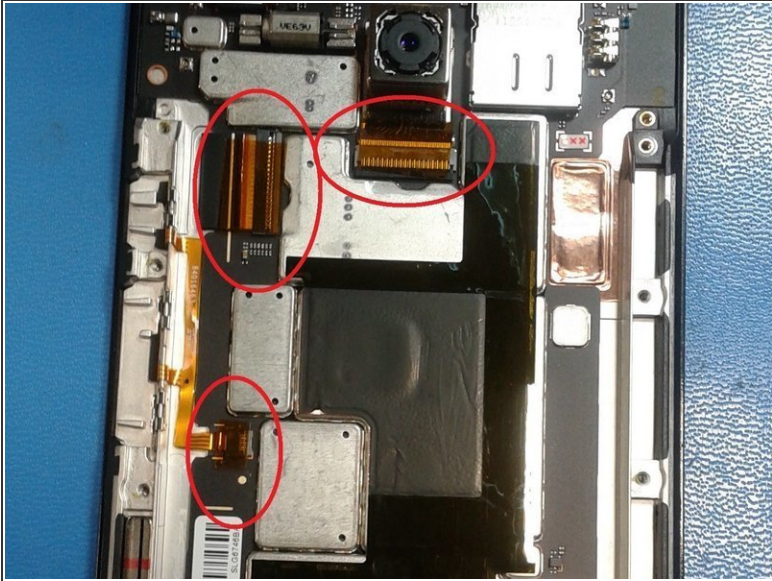
## Step 7



- Remove the disconnected battery from the phone.

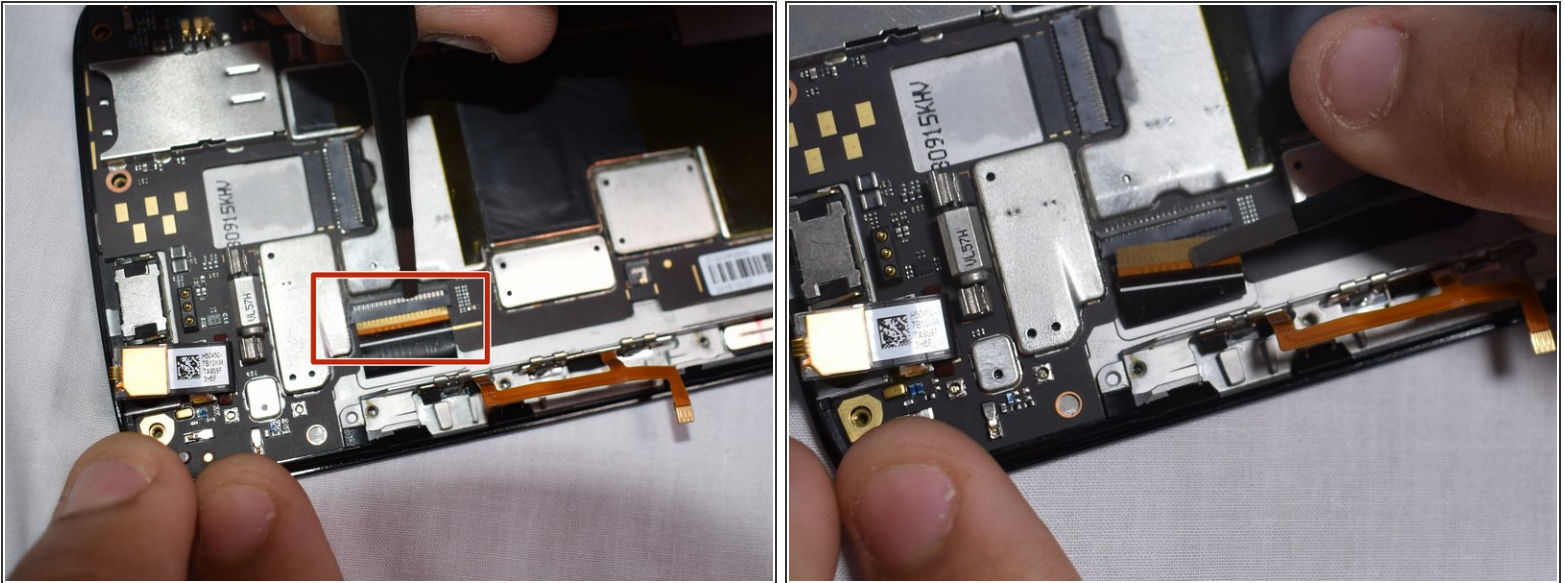


## Step 8 — Screen Assembly



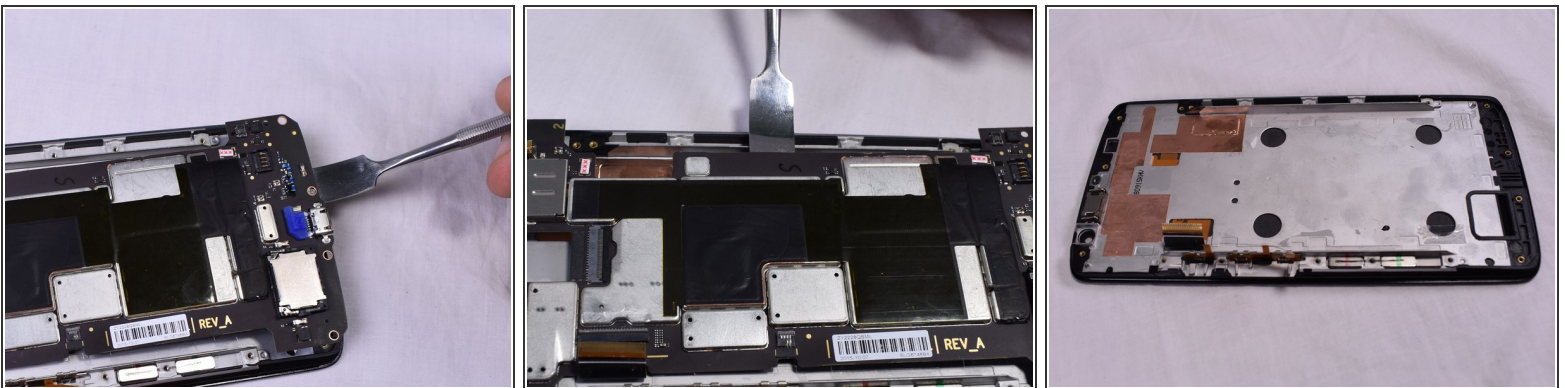
- We will be removing these 3 ribbon cables.
- Using an opening pick, lift the grey tab on the rear camera's ZIF connector. Remove the ribbon cable and the camera.
- Use tweezers to lift up on the grey latch on the ZIF connector.
- Remove the ribbon cable from the ZIF connector.

## Step 9



- Use a pair of tweezers to lift up the black latch on the ZIF connector.
- Pull the ribbon cable out of the ZIF connector.

## Step 10



- Using a metal spudger, work your way around the perimeter of the main board and screen.
- ⓘ There is a lot of adhesive between the two pieces, so be careful to try to remove the adhesive slowly in order to not break anything.

To reassemble your device, follow these instructions in reverse order.