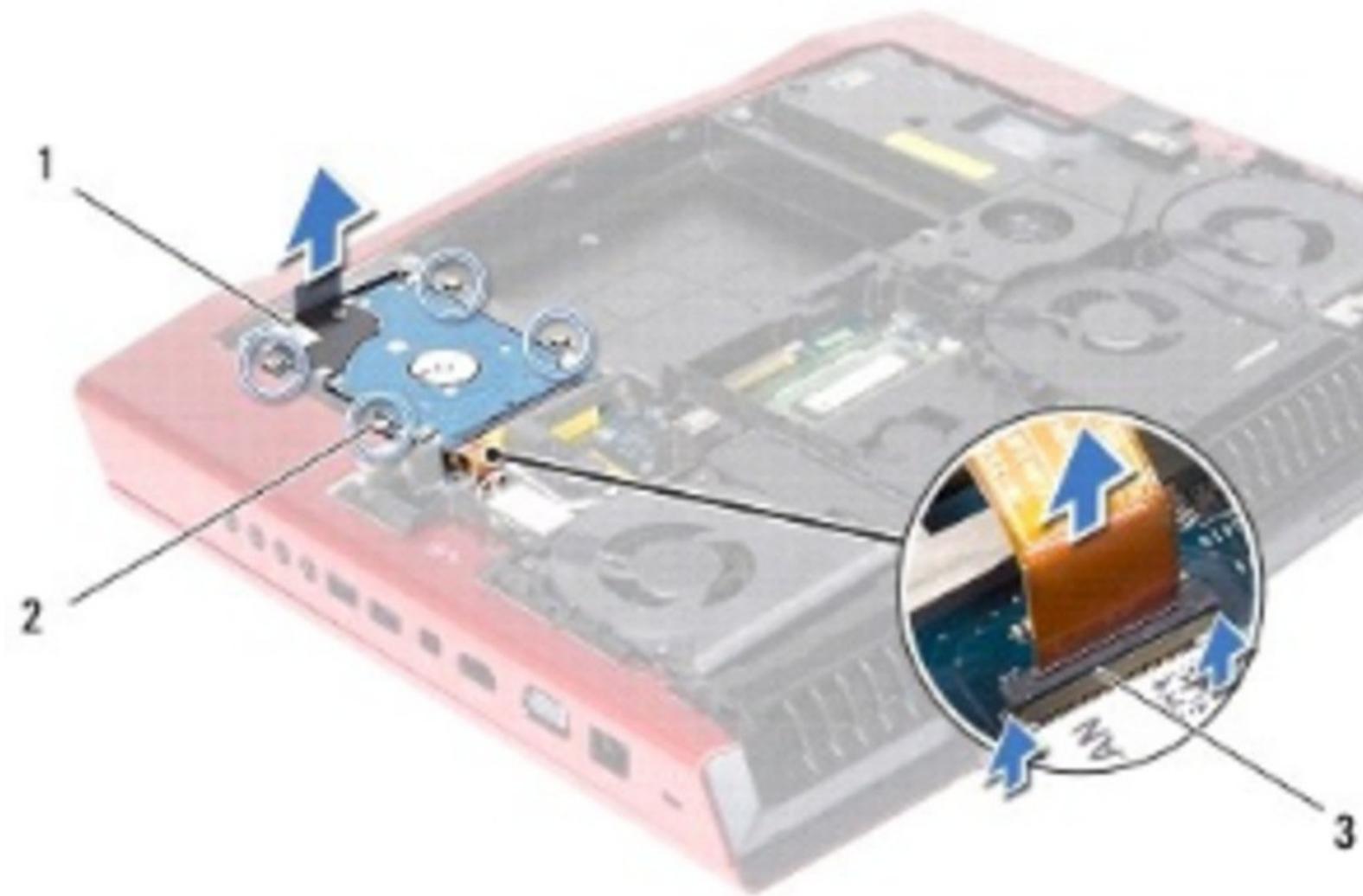




# Dell Alienware M18x Hard Drive Replacement

Written By: Terrence15



---

# INTRODUCTION

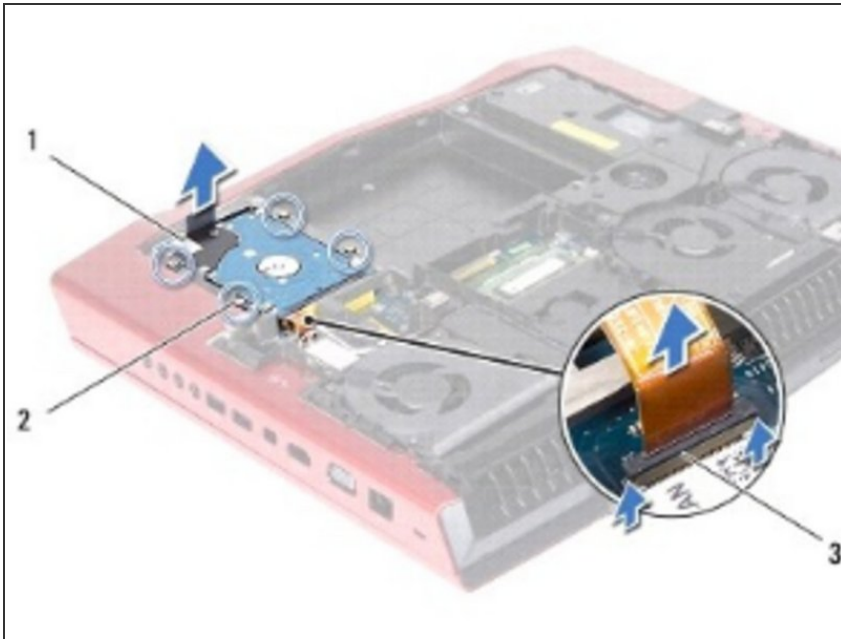
In this guide, we will show you how to remove and replace the Hard Drive.

---

## TOOLS:

- [Phillips #0 Screwdriver](#) (1)
-

## Step 1 — Lifting the Connector Latch

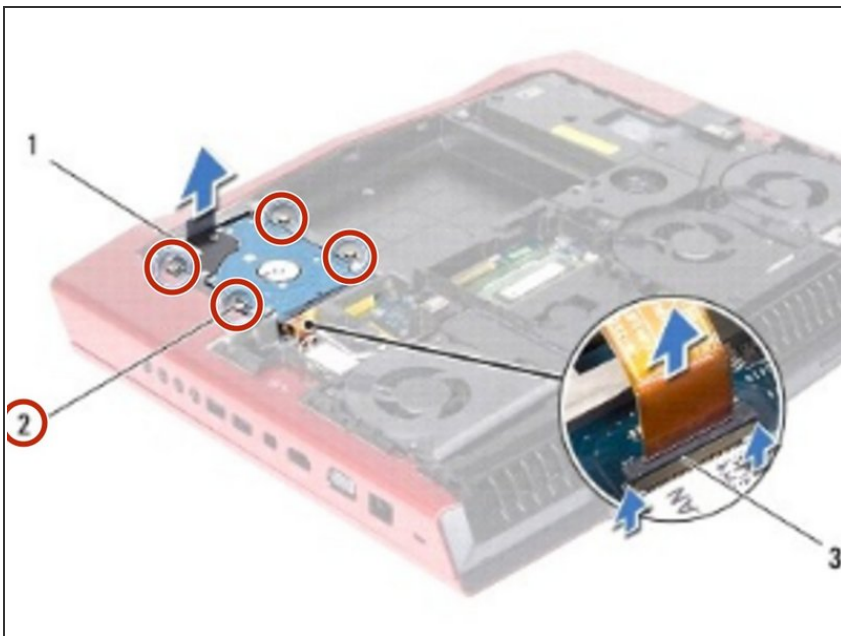


**⚠ WARNING:** Before working inside your computer, read the safety information that shipped with your computer.

**⚠ CAUTION:** To avoid electrostatic discharge, ground yourself by using a wrist grounding strap or by periodically touching an unpainted metal surface (such as a connector on your computer).

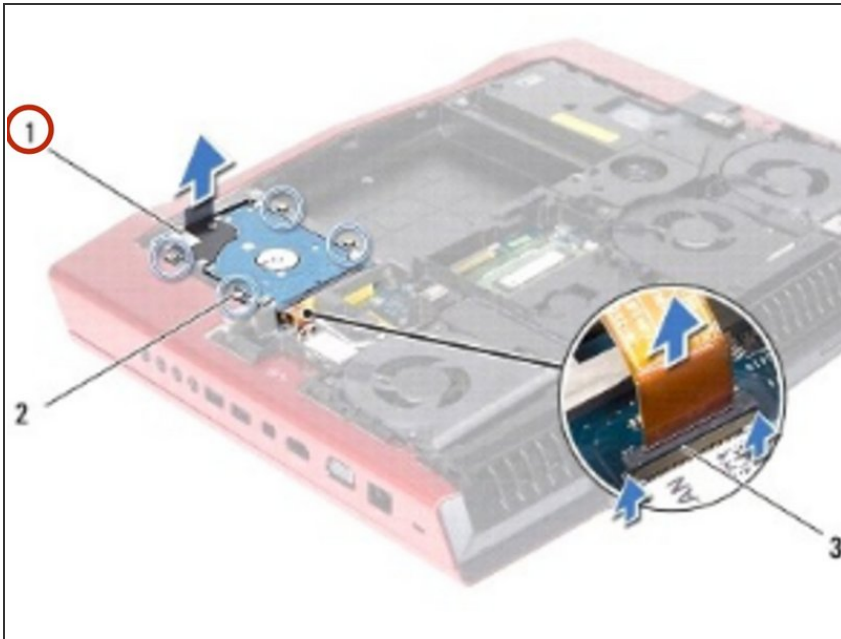
- Lift the connector latch that secures the hard-drive cable to the connector on the system board, and then disconnect the hard-drive cable from the connector on the system board.

## Step 2 — Loosen the Screws



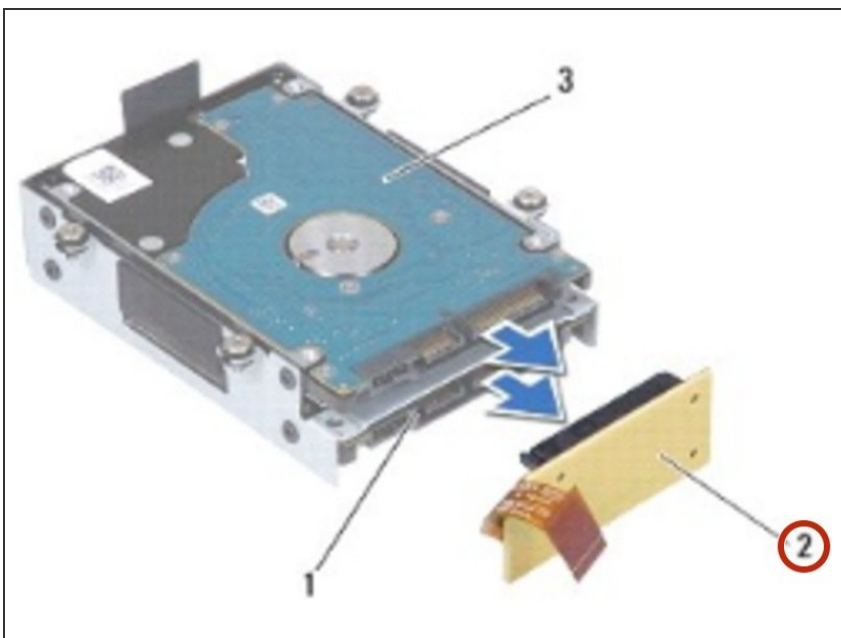
- Loosen the four captive screws that secure the hard-drive assembly to the computer base.

### Step 3 — Lifting the Hard-Drive



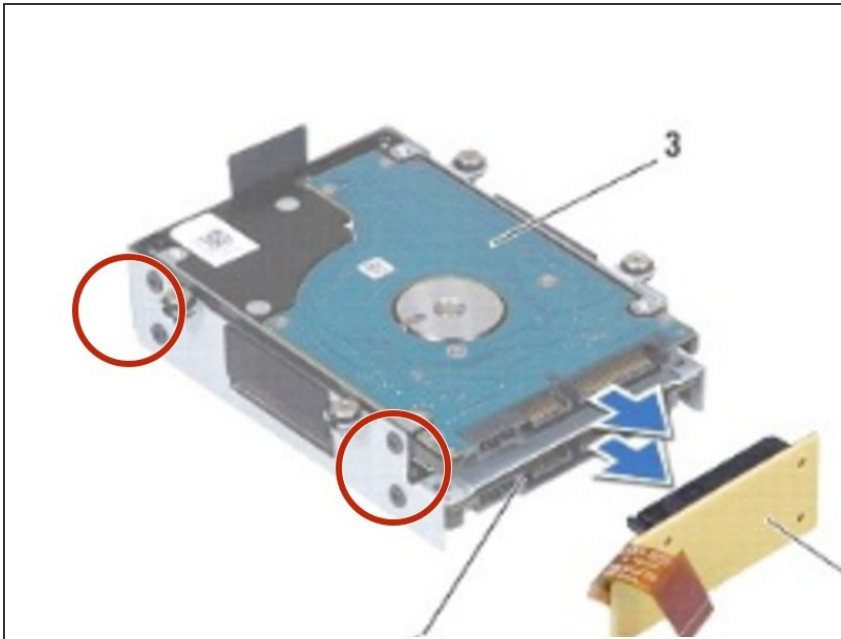
- Using the pull-tab, lift the hard-drive assembly out of the computer base.

### Step 4 — Disconnecting the Interposer



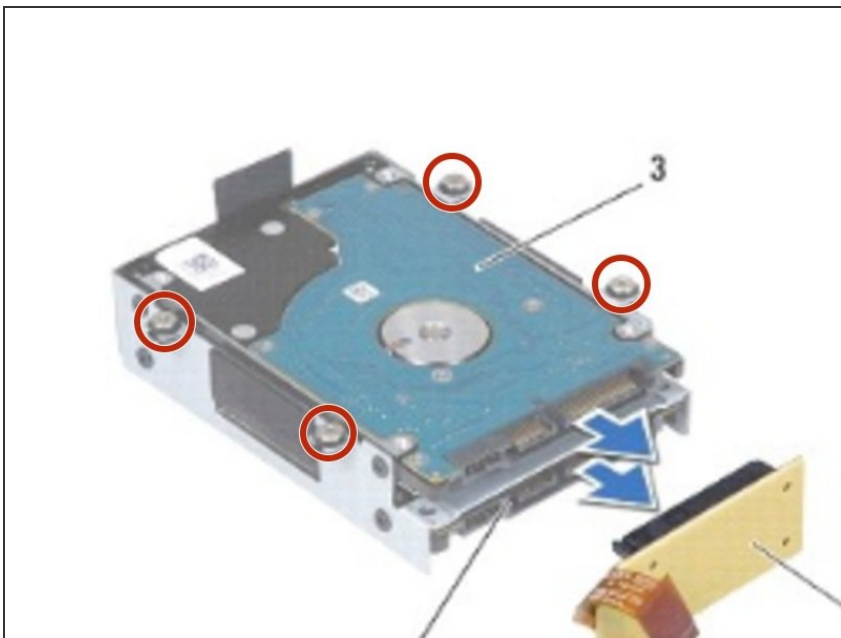
- Disconnect the interposer from the hard drives.

## Step 5 — Remove the Screws



- Remove the four screws that secure the primary hard drive (HDD 0) and lift the hard drive out of the hard - drive bracket.

## Step 6 — Remove the Screws

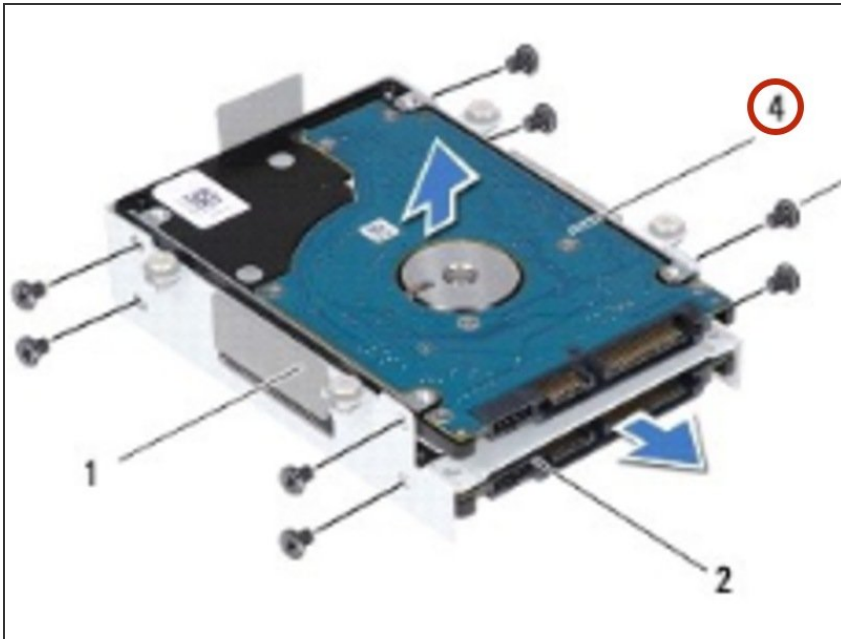


- Remove the four screws that secure the secondary hard drive (HDD 1) and slide the hard drive out of the hard-drive bracket.

⚠ CAUTION: When the hard drive is not in the computer, store it in protective antistatic packaging (see "Protecting Against Electrostatic Discharge" in the safety instructions that shipped with your computer).

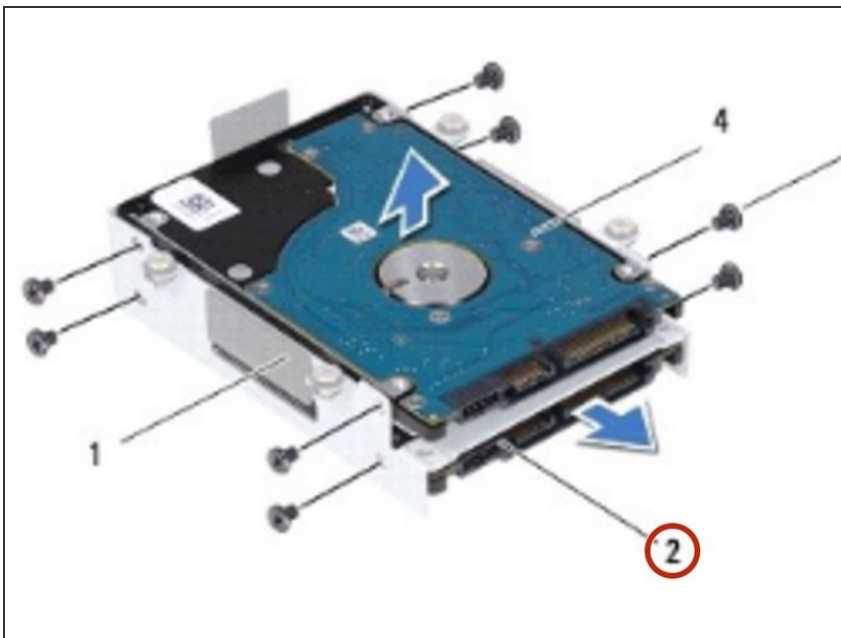


## Step 7 — Place the Primary Hard Drive



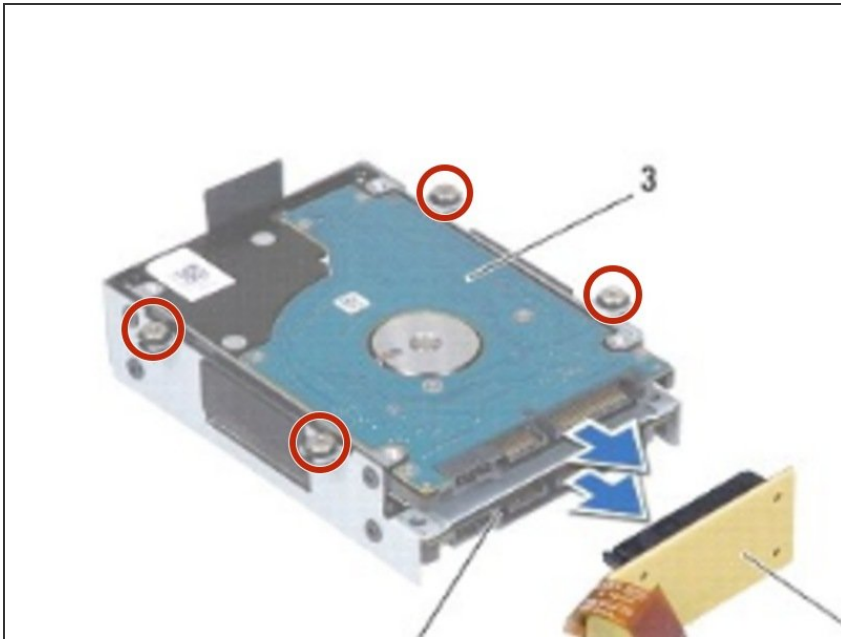
- Place the primary hard drive (HDD0) in the hard-drive bracket.

## Step 8 — Sliding the Secondary Hard Drive



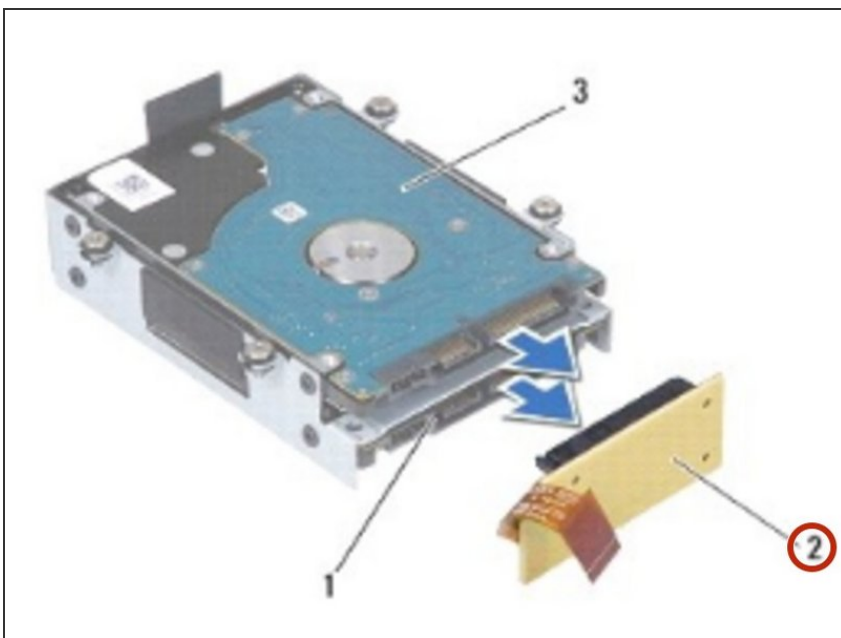
- If applicable, slide the secondary hard drive into the hard-drive bracket.

## Step 9 — Replace the Four Screws



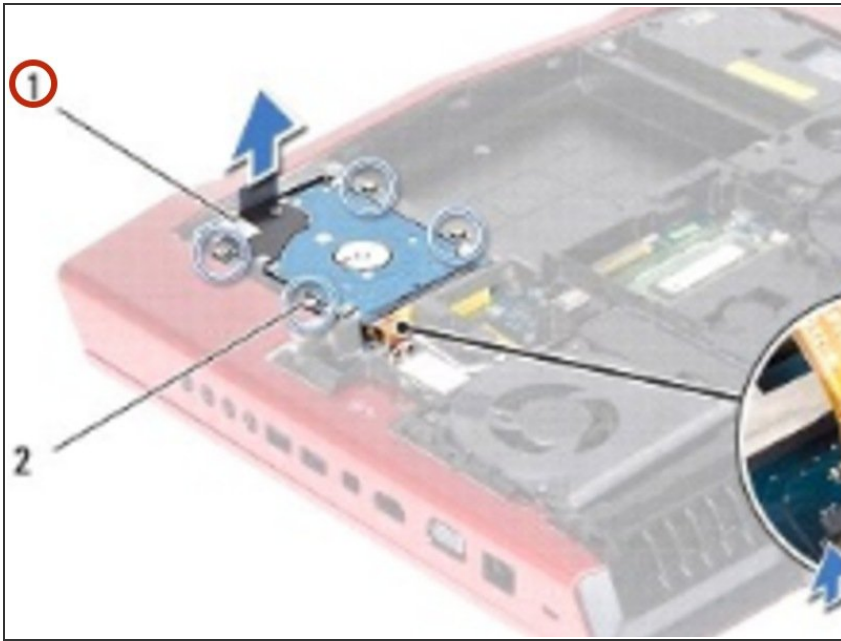
- Replace the four screws that secure the primary hard drive (HDD 0).

## Step 10 — Replace the Four Screws



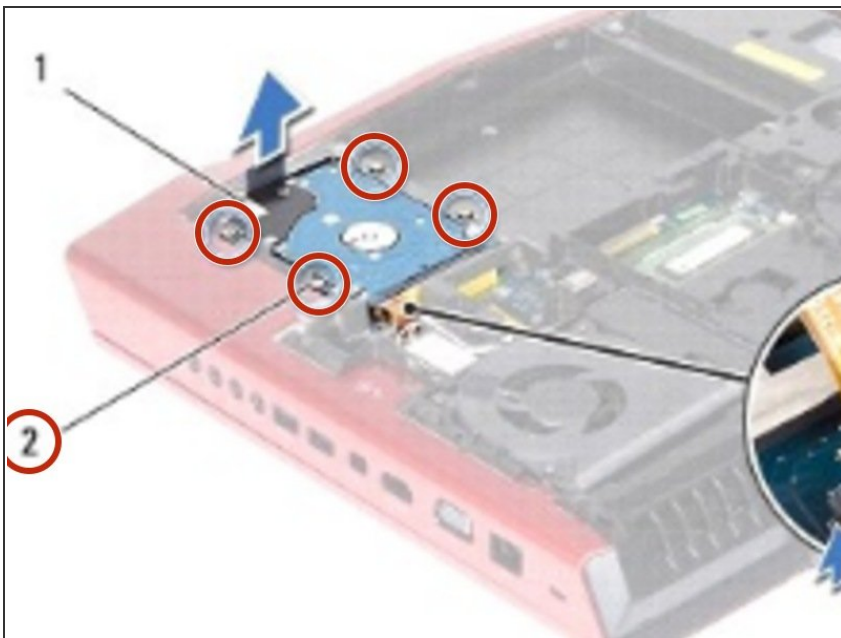
- If applicable, replace the four screws that secure the secondary hard drive (HDD 1) to the hard-drive bracket.
- Connect the interposer to the hard drives.

## Step 11 — Placing the Hard Drive Assembly



- Place the hard-drive assembly in the computer base.

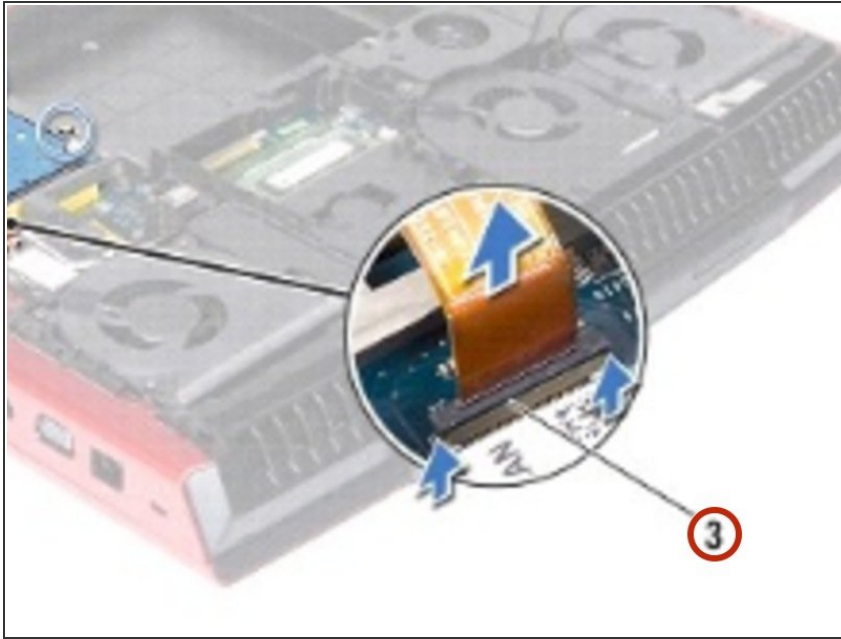
## Step 12 — Tighten the Screws



- Tighten the four captive screws that secure the hard-drive assembly to the computer base.



## Step 13 — Connect the Hard-Drive Cable



- Connect the hard-drive cable to the connector on the system board and press down on the connector latch to secure the cable.

To reassemble your device, follow these instructions in reverse order.