



INTRODUCTION

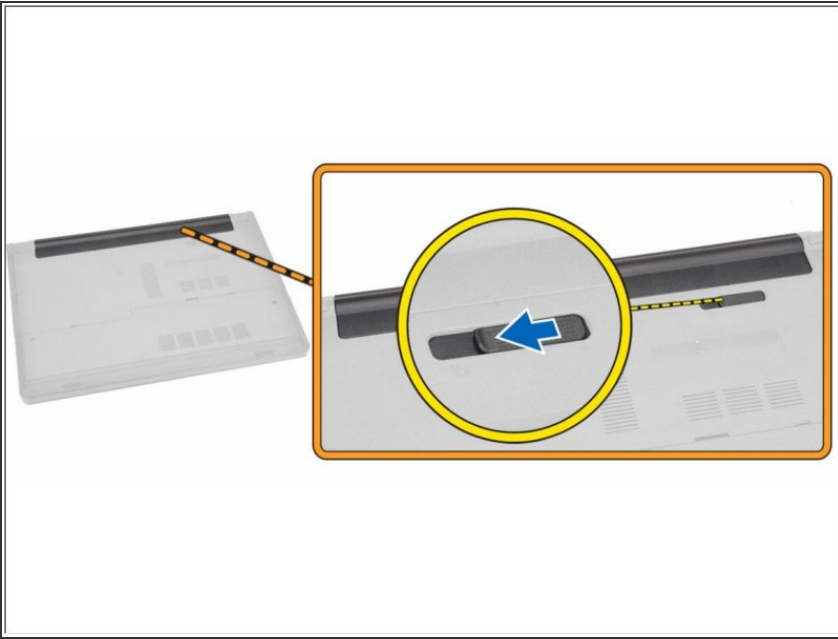
In this guide, we will show you how to remove and replace the Hard Drive.



TOOLS:

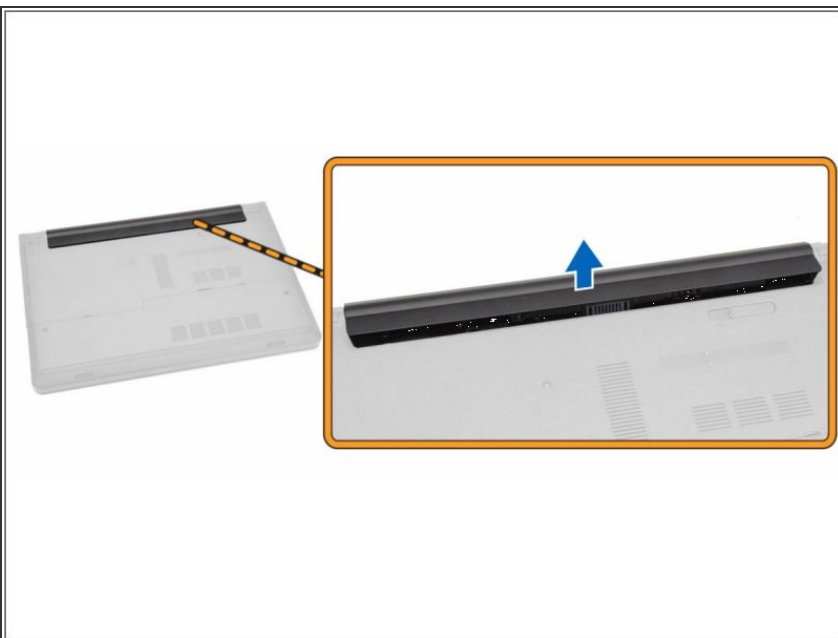
- [Phillips #0 Screwdriver](#) (1)
-

Step 1 — Unlocking the Battery



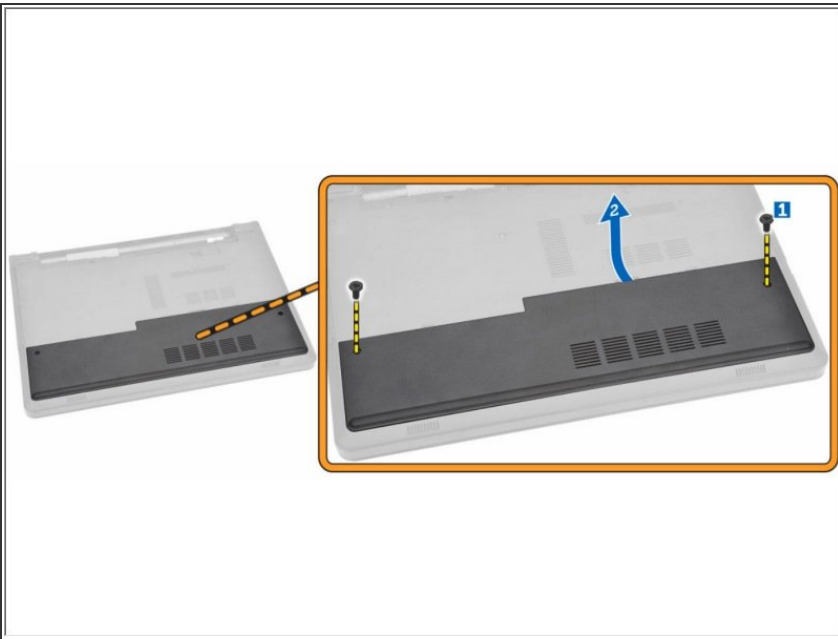
- Slide the release latch outwards to unlock the battery.

Step 2 — Lifting the Battery



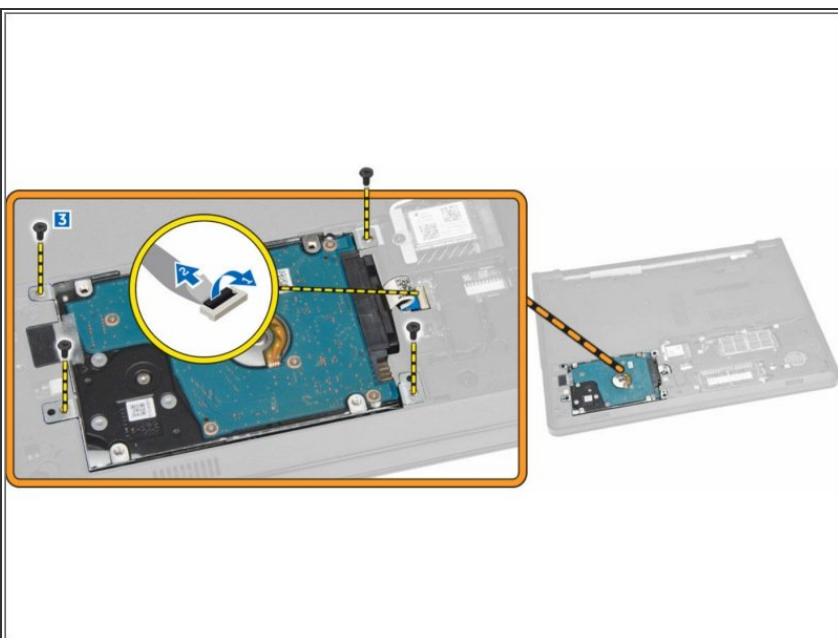
- Lift the battery to remove it from the computer.

Step 3 — Remove the Screws



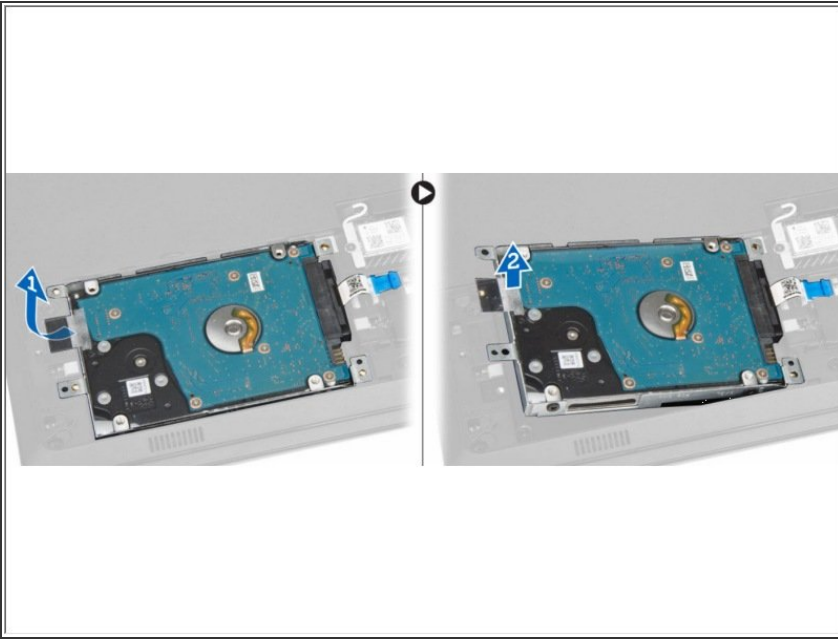
- Remove the screws that secure the access panel to the computer.
- Lift the access panel away from the computer.

Step 4 — Lifting the Tab



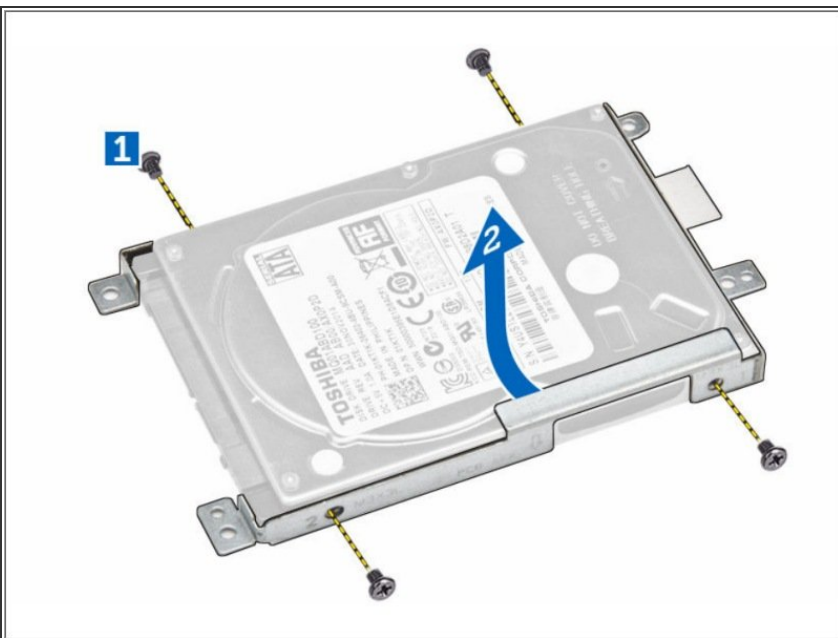
- Lift to release the tab.
- Disconnect the hard-drive cable from the system board.
- Remove the screws that secure the hard drive to the computer.

Step 5 — Remove the Tape



- Remove the tape and lift the hard drive to remove it from the computer.

Step 6 — Remove the Screws



- Remove the screws that secure the hard drive to the bracket.
- Lift the hard drive away from the bracket.

To reassemble your device, follow these instructions in reverse order.