



HP ENVY 5530 Paper Tray Replacement

Paper tray locks or breaks so it needs to be replaced.

Written By: Elizabeth Surface



INTRODUCTION

Paper trays help align papers once printed. Over time, the paper tray may lock itself or break. Ensure you have unplugged your device before you begin this repair.



TOOLS:

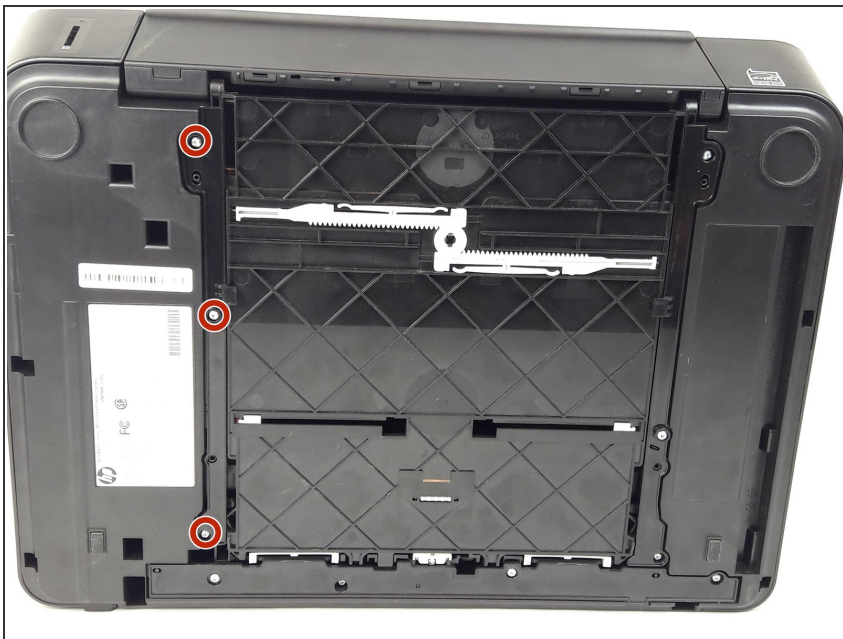
- [TR10 Torx Security Screwdriver](#) (1)
-

Step 1 — Paper Tray



- Grab both sides of the printer and flip it away from you so the bottom is facing up.

Step 2



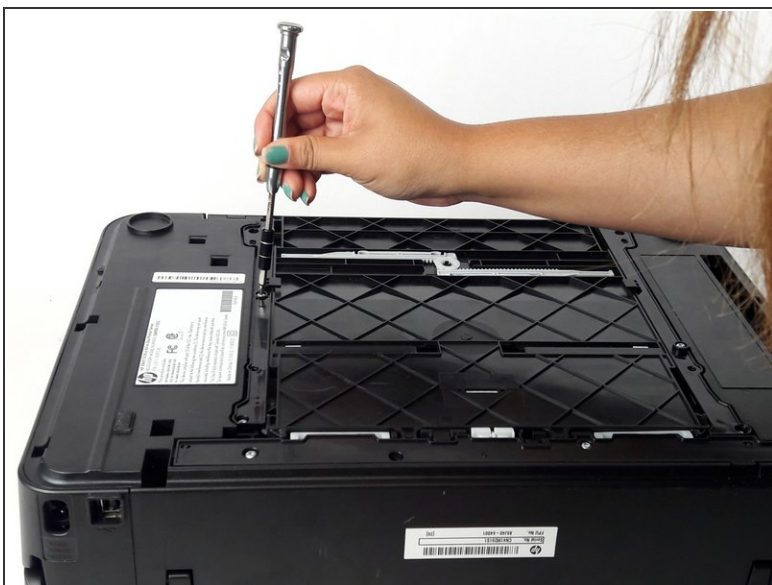
- Locate the 13mm TR10 Torx screws on the left side of the paper tray.

Step 3



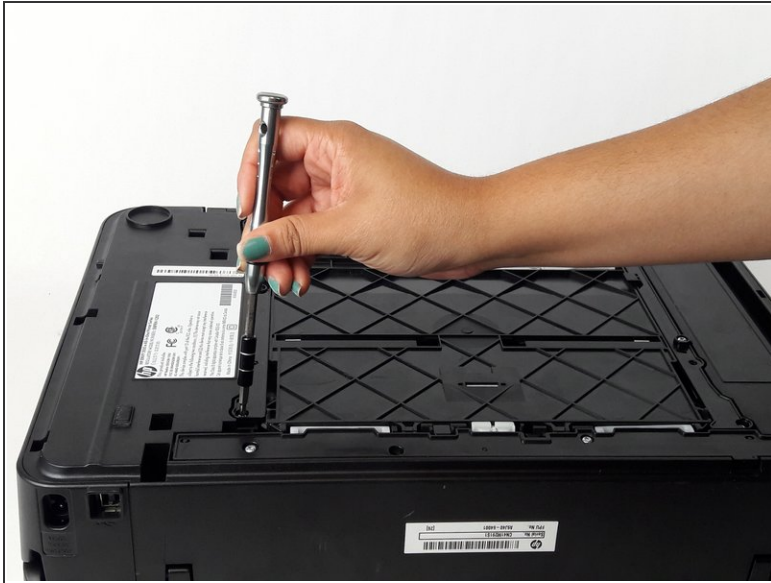
- Unscrew and remove the 13mm TR10 Torx Security screw, starting with the farthest screw on the left

Step 4



- Locate and remove middle 13mm TR10 Torx Security screw using a Torx screwdriver.

Step 5



- Locate and remove the last 13mm TR10 Torx Security screw.

Step 6



- Locate the side tab and lift up to remove.

Step 7



- Locate the three 13mm TR10 Torx Security screws on the right side panel.

Step 8



- Locate and remove the farthest 13mm TR10 Torx Security screw.

Step 9



- Locate middle 13mm TR10 Torx Security screw and remove it.

Step 10



- Locate last 13mm TR10 Torx Security screw and remove it.

Step 11



- Locate tab on the right side panel and lift to remove it.

Step 12



- The back should look like this.

Step 13



- Remove paper tray by pulling it out and away from the printer.

 Be cautious of jumping springs once pulling out the paper tray.

To reassemble your device, follow these instructions in reverse order.