



# Nikon Coolpix S800c Zoom Unit/Shutter Replacement Guide

This guide will help the user access, remove, and then replace the zoom unit/shutter component located inside the main body of the camera.

Written By: Erik Knapton



## INTRODUCTION

The zoom unit/shutter component located inside the main body of the camera under the motherboard will need to be replaced if non-functional.



### TOOLS:

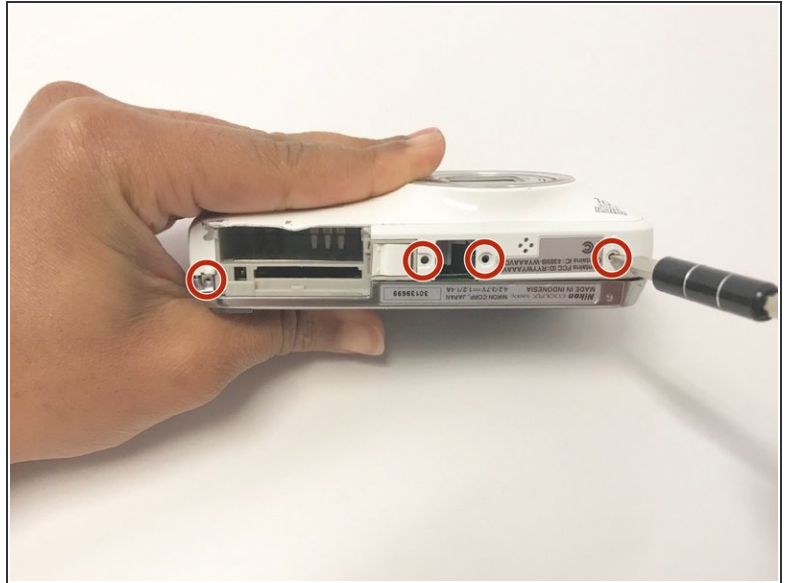
- [iFixit Opening Tools](#) (1)
- [IFixit Pro Tech Toolkit](#) (1)
- [Metal Spudger](#) (1)
- [Phillips #00 Screwdriver](#) (1)



### PARTS:

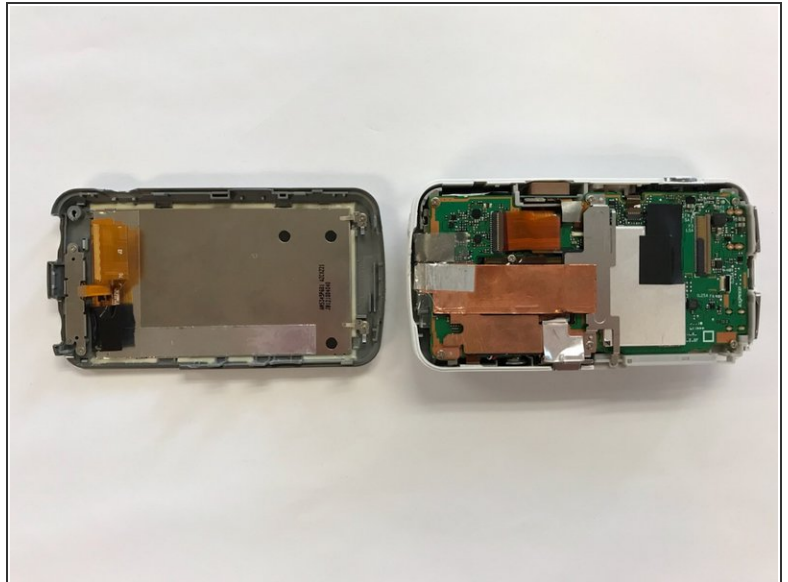
- [Nikon Coolpix S800c Back Panel/Screen](#) (1)
- [Nikon Coolpix s800c Motherboard](#) (1)
- [Nikon Coolpix Zoom Unit/Shutter Component](#) (1)

## Step 1 — Back Panel/Touch Screen



- Remove all 4 screws from the bottom face of the camera using a Phillips #00 head screwdriver (found in iFixit tool kit).

## Step 2



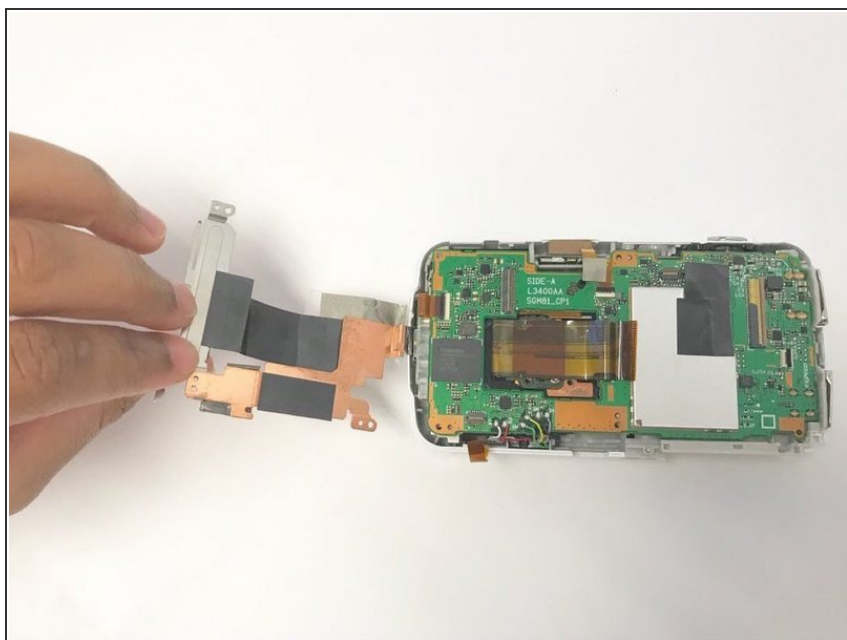
- Using a plastic tool, pry open the back panel of the camera. Be careful not to apply too much force and damage the camera.

## Step 3 — Motherboard



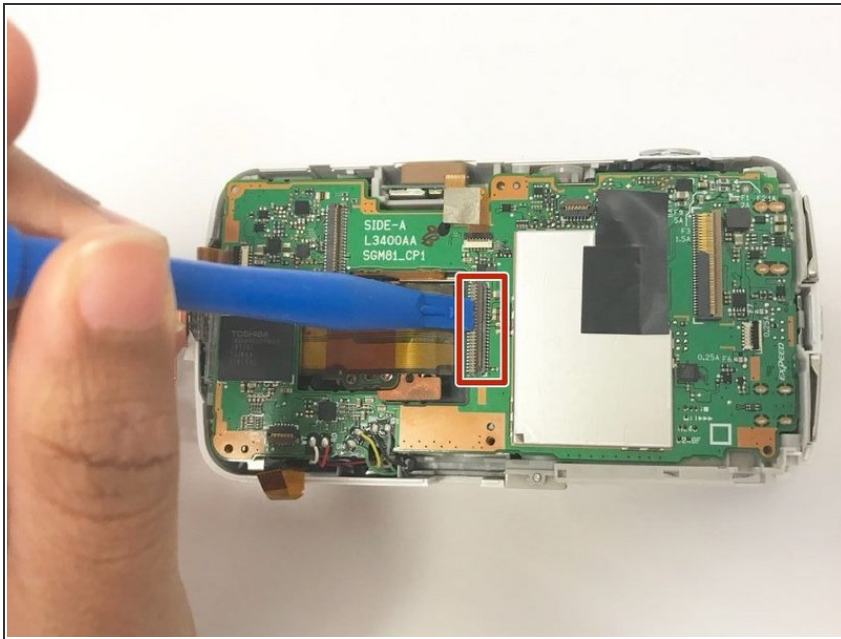
- Unscrew all 6 visible screws that secure the motherboard into place using a Phillips head screwdriver (found in iFixit tool kit).

## Step 4



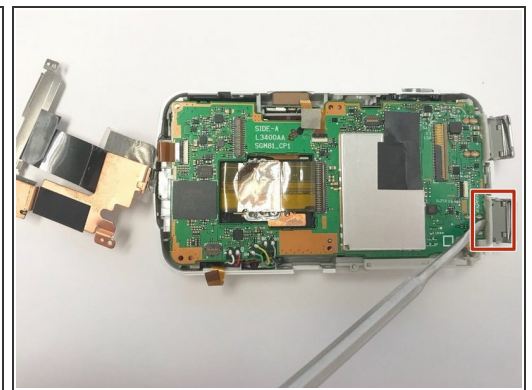
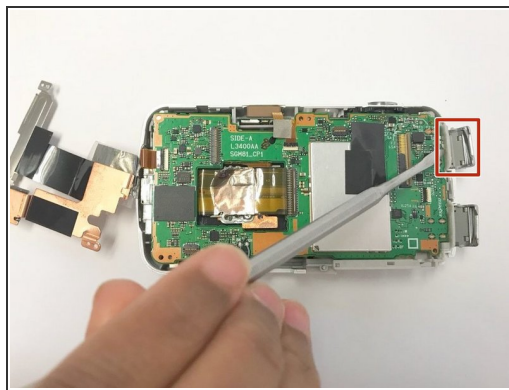
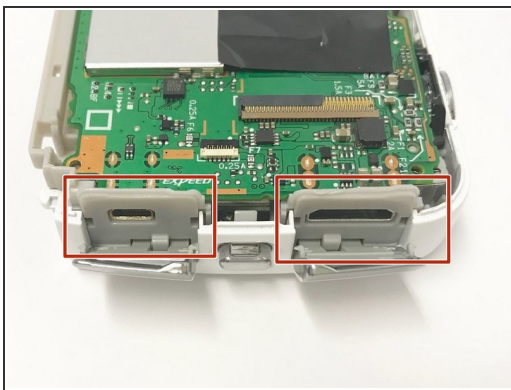
- Pull the shown panel off of the motherboard to expose the Image sensor connection

## Step 5



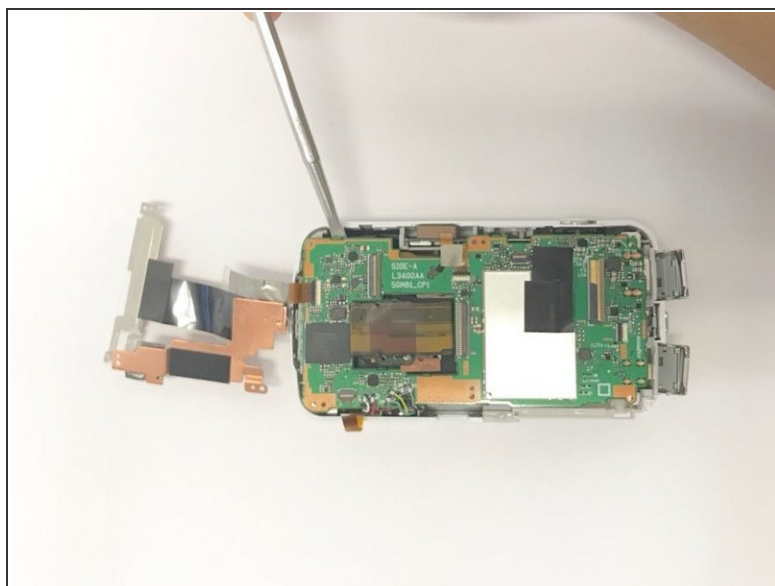
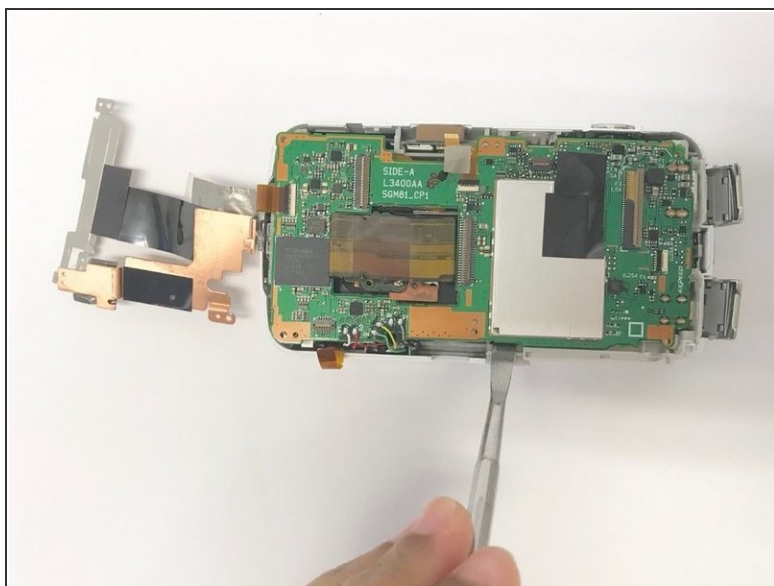
- Lift tab up to remove the Image sensor connection strip.

## Step 6



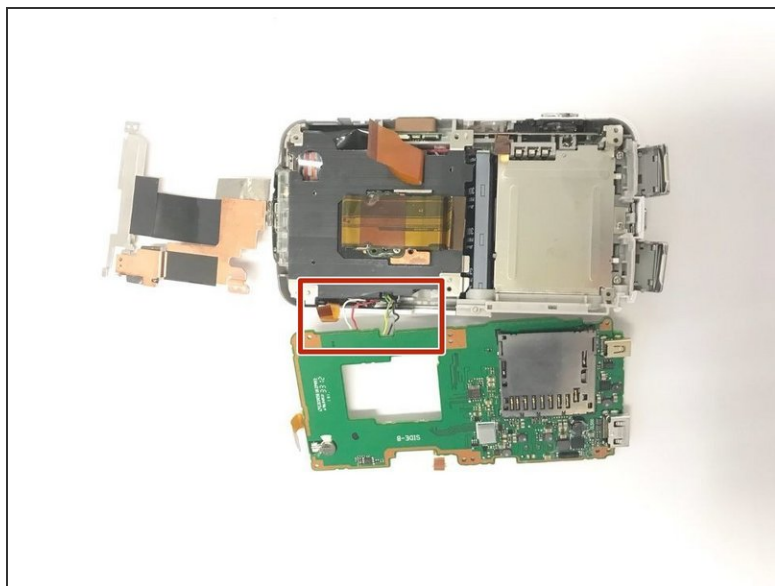
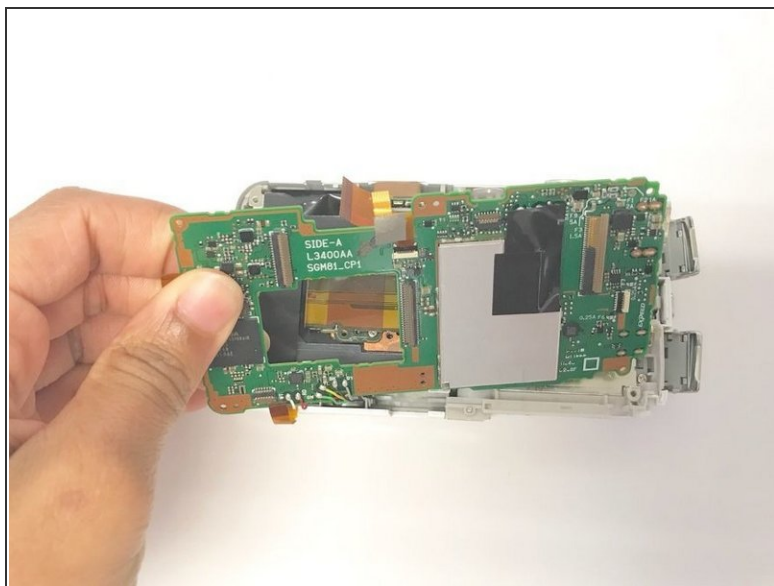
- Pull the gray panels back to allow the hidden micro usb and hdmi insert connectors to come free.
- Use a Metal Spudger to help with the process to get these connectors free from the frame.

## Step 7



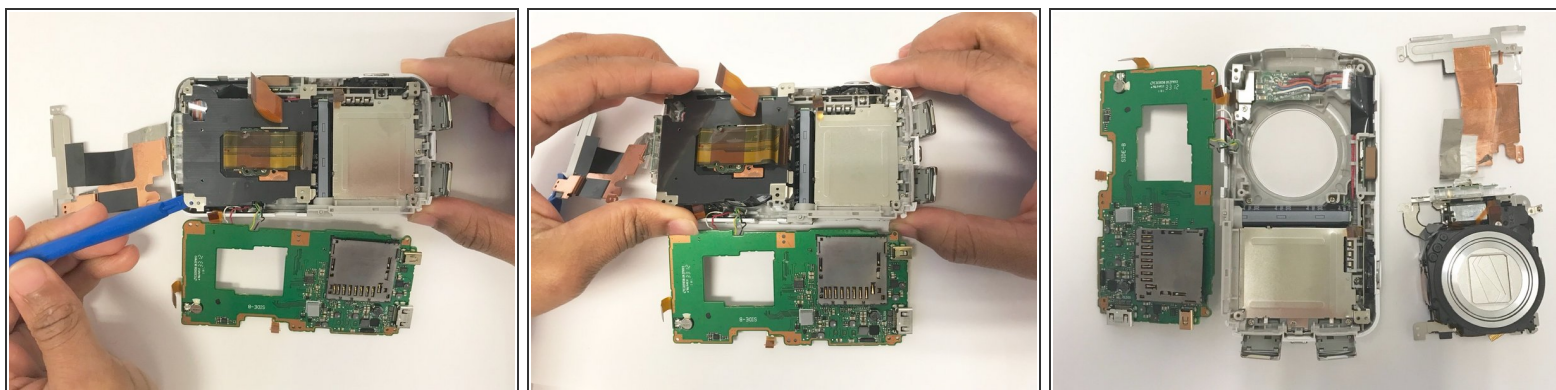
- Using a Metal Spudger, lift the motherboard up from the body of the camera.

## Step 8



- Pull the motherboard off of the main body of the camera.

## Step 9 — Zoom Unit/Shutter



- Use a plastic opening tool of your choice to loosen and pry up the zoom unit/shutter component.
- Use your hands to manually lift the zoom unit/shutter component up and out of the main body of the camera.

To reassemble your device, follow these instructions in reverse order.