



Resetting PlayStation 3 Drive Mechanism

If Your Playstation will not eject a disk and you want to remove it and reset the mechanism this is how

Written By: David Harris





TOOLS:

- [T10 Torx Security Bit Screwdriver](#) (1)
 - [Spudger](#) (1)
 - [Phillips #1 Screwdriver](#) (1)
-

Step 1 — Resetting PlayStation 3 Drive Mechanism



- Remove Rubber Foot

Step 2



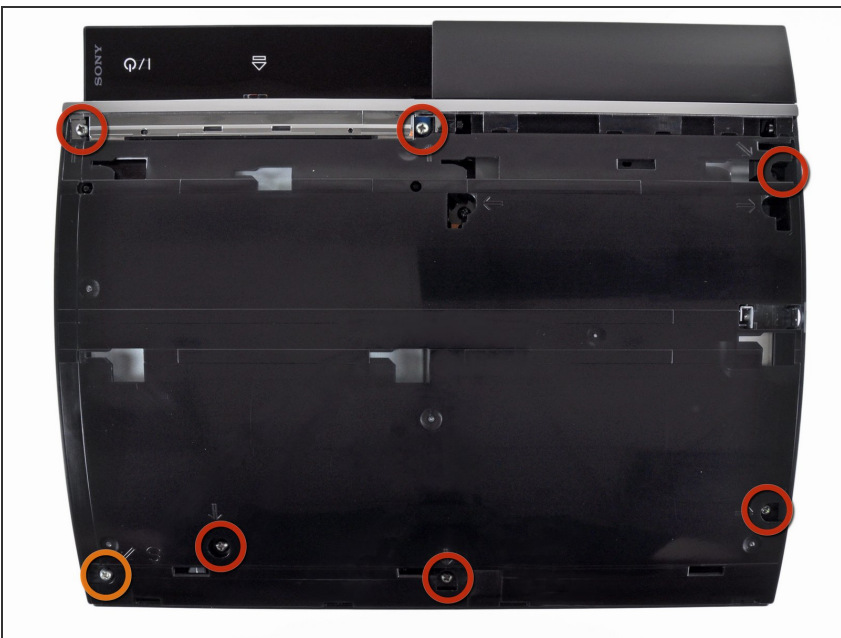
- Remove Screw with a TORX Security T10 Bit (or you can use a small flat head screwdriver)

Step 3



- Carefully slide the top plate and lift to remove

Step 4



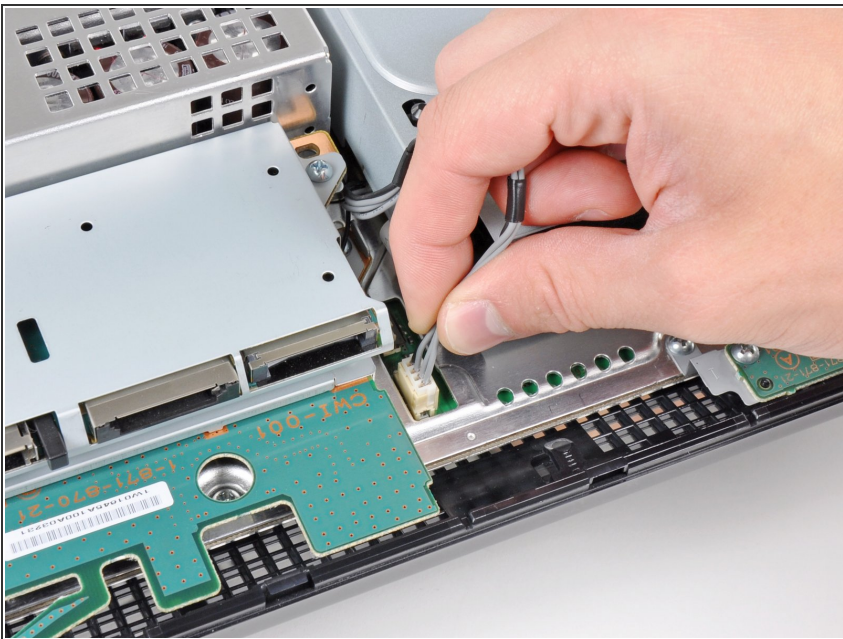
- Remove the main screws (philips head)

Step 5



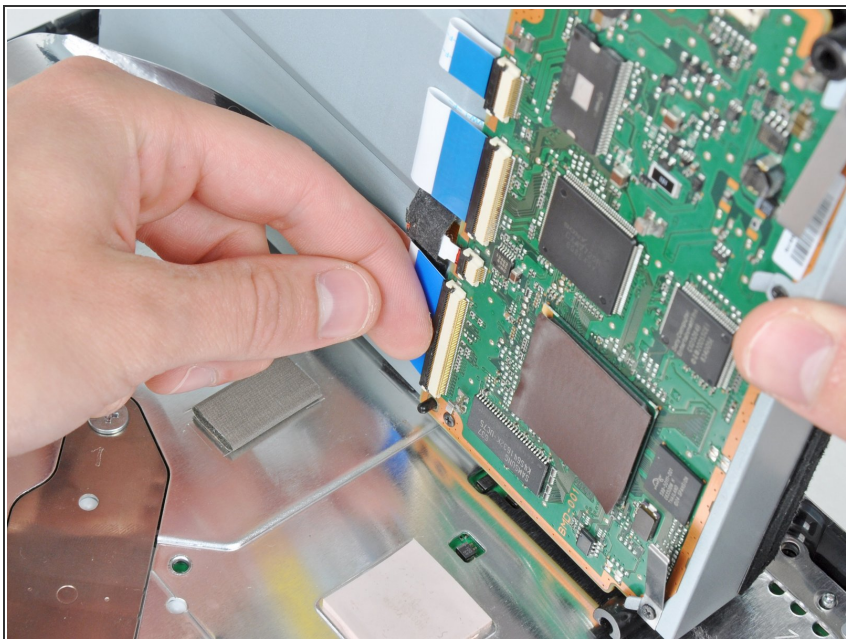
- Lift The Top Casing Towards the front of the PS3 carefully

Step 6



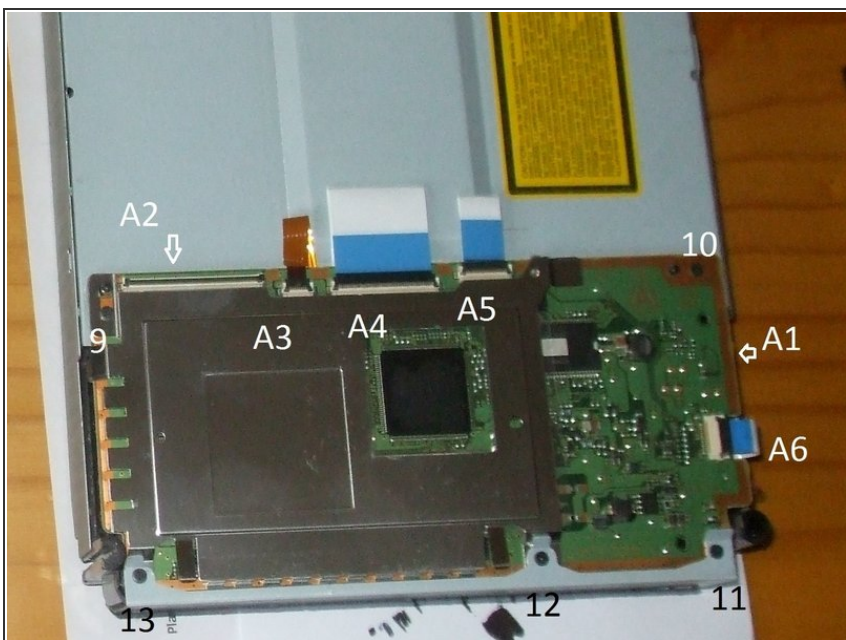
- Carefully Remove Power cable from the motherboard

Step 7



- Lift the Disk drive to the right and remove the largest ribbon cable by lifting the black catch and remove the drive from the PS3

Step 8



- Remove Screws 11, 12 and 13 only

Step 9



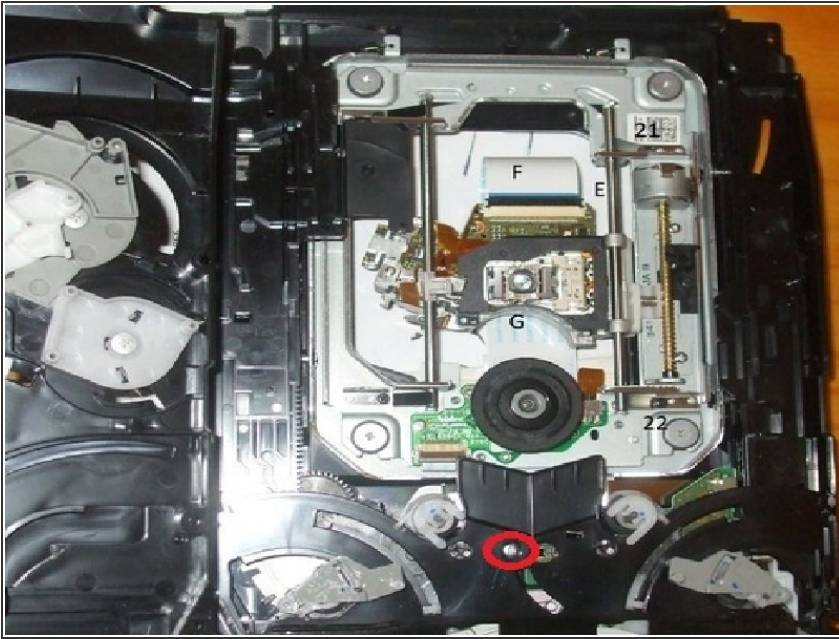
- Remove screws 14 and 15 and the silver springboard, slightly bend top metal away from disk entry area, and pull back to remove the metal jacket.

Step 10



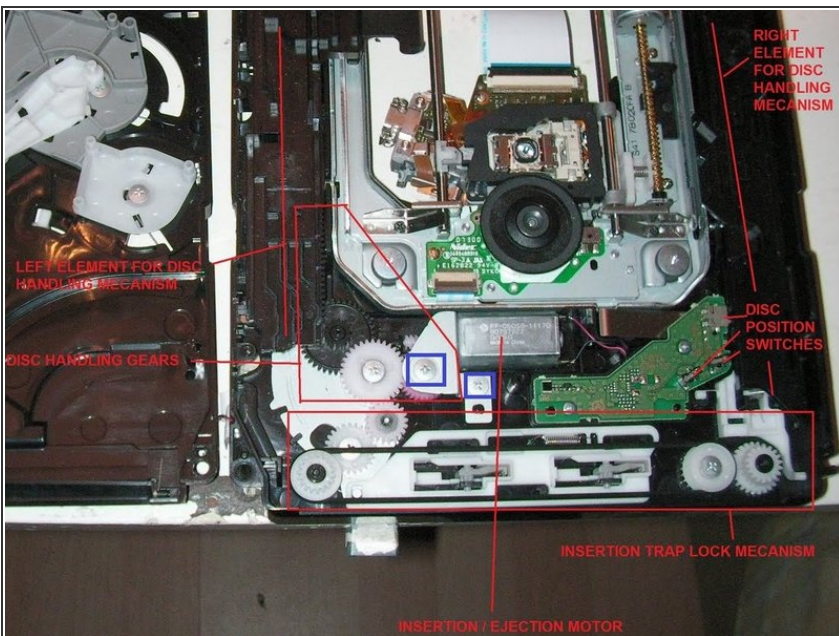
- Remove white center hub piece (D) and screws 16 - 20 then fold the top section to the left being careful not to damage the cable to the bottom left. The cable is very delicate and easily damaged.

Step 11



- Remove the screw circled in red and lift up the black assembly to reveal the mechanism beneath. Set it aside right-side up and be careful not to shake any parts loose.

Step 12



- Remove two screws in blue and lift the motor up and to right to disengage the cogs but be careful not to stress the attached wires.
- Move the disc handling element on the left side up so that its teeth are clear of the black cog.
- Reset insertion trap lock mechanism and make sure the white tab on right is lowered (nudge it left to make it drop).
- Replace the motor and reverse this guide to reassemble.

To reassemble your device, follow these instructions in reverse order.