



Logitech S120 Slim Mini Stereo Speakers

Teardown

Teardown of the Logitech S120 Slim Mini Stereo Speakers.

Written By: bglidden95



INTRODUCTION

Teardown of the Logitech S120 Slim Mini Stereo Speakers.



TOOLS:

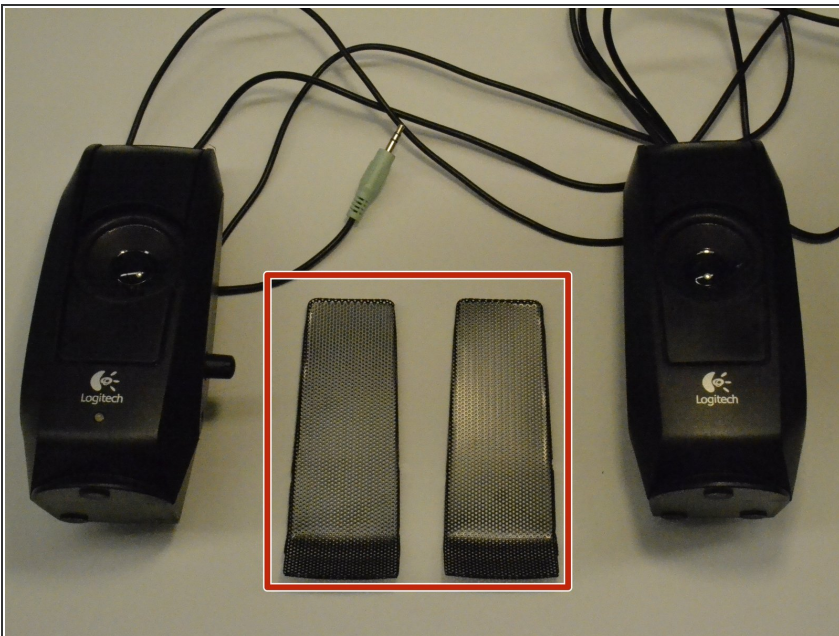
- [Pro Tech Toolkit](#) (1)
-

Step 1 — Logitech S120 Slim Mini Stereo Speakers Teardown



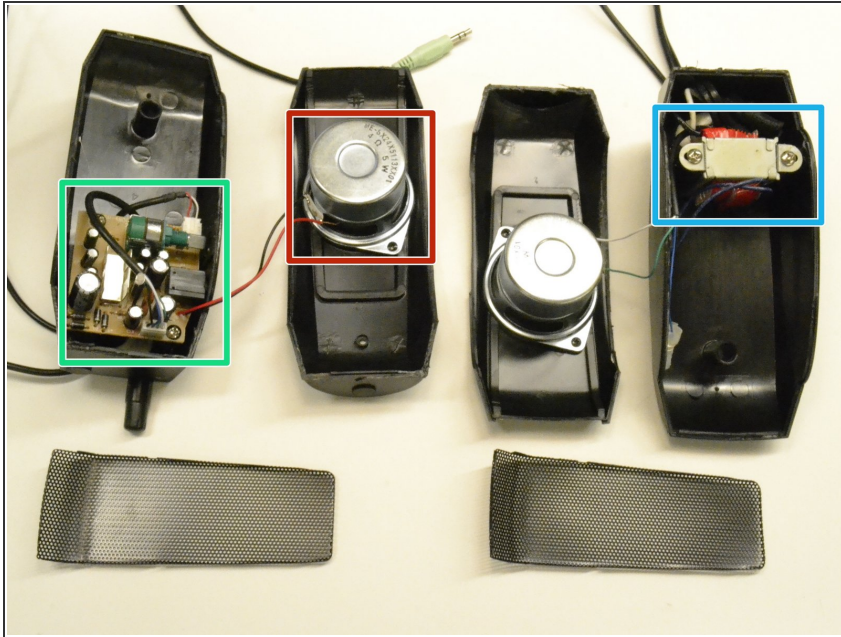
- Desktop Computer Speakers
- Weight: 1lb
- Height: 6.22 in
- Width: 2.67 in
- Depth: 2.51 in
- Power: 2.2W (RMS)
- RCA and 3.5mm jack inputs

Step 2 — Remove Speaker Grill



- Remove the speaker grills using a thin, flat object such as a flathead screwdriver.
- Insert the tool where the grill connects to the chassis just above the logitech logo.
- Pry upwards until the grill releases

Step 3 — Open the Speaker Chassis



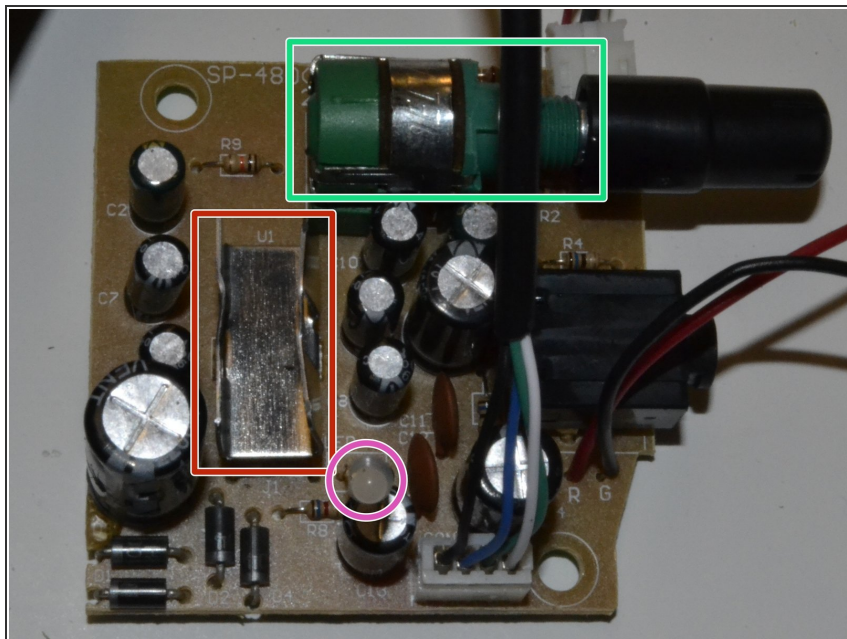
- Insert the flathead screwdriver in the seam between the speaker chassis.
- Use force to jam the flathead screwdriver into the chassis.
- Drag the screwdriver around the chassis until the two sides separate.

Step 4 — Remove Internal Components



- Using a phillips head screwdriver, remove the screws holding the PCB, transformer, and speakers to the chassis.
- Pull the PCB, transformer, and speakers from the chassis.

Step 5 — Examine Speaker Driver



- The driver board contains several components
- Stereo Amplifier: TEA2025B
- 5mm LED power indicator
- Potentiometer and on/off switch
- Decoupling, bypass, and AC coupling capacitors