



CucinaPro Cordless Crepe Maker Teardown

This guide provides a teardown of the 1447 CucinaPro Cordless Crepe Maker.

Written By: Sophia De Guia



INTRODUCTION

It's time to stop loafing around and eat more crepes! The CucinaPro Cordless Crepe Maker allows consumers to cook crepes using a dipping plate that doubles as a cooking surface. The device powers through standard household electric supplies of 110-120V and 60Hz. Easy to use and relatively durable, it is a perfect way to introduce oneself to French cuisine. With that said, Bon Appetit!




TOOLS:

- [Phillips #1 Screwdriver](#) (1)
-

Step 1 — CucinaPro Cordless Crepe Maker Teardown



- The CucinaPro crepe maker has two main components: a heating body and a power base.

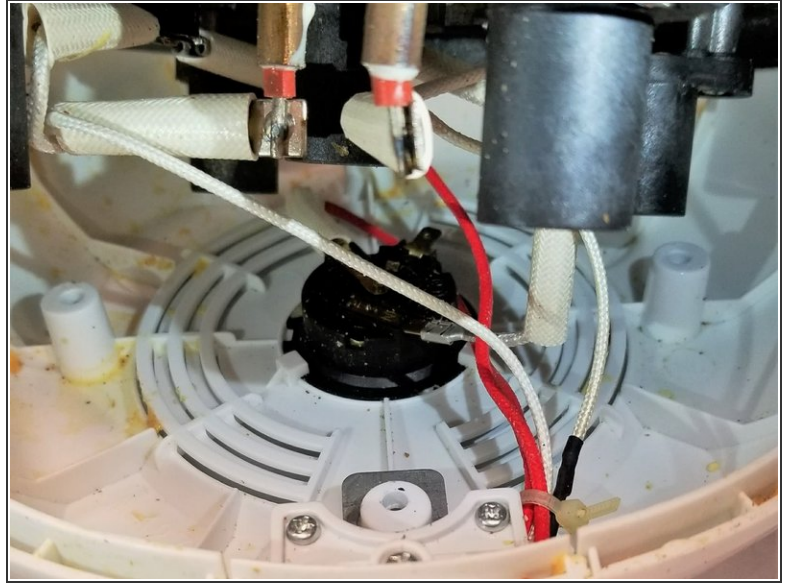
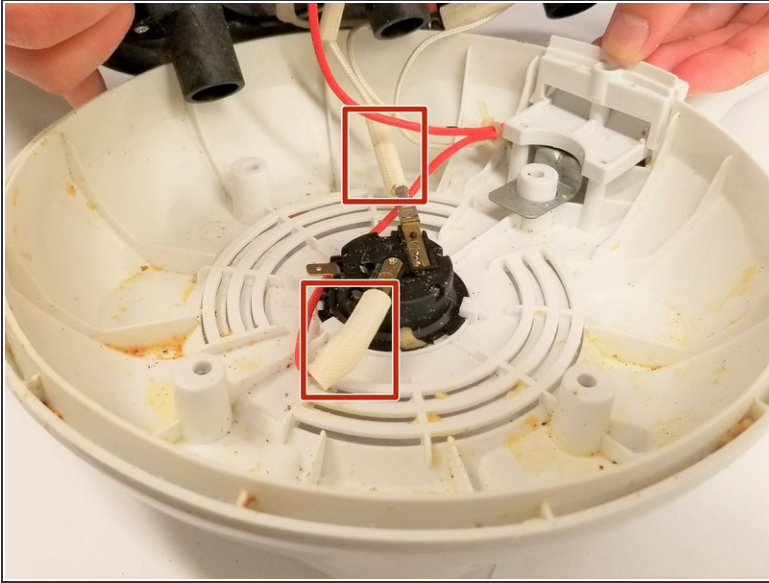
 Disconnect the power base from the heating body to prevent undesired heating. Also disconnect from power so you don't die!

Step 2



- Flip over the heating body of the crepe maker to access bottom screws.
- Use a #1 Phillips screwdriver to unscrew 7 #1-20 x11mm and 1 #1-20x7mm screws along the bottom of the heating pan and the handle.

Step 3



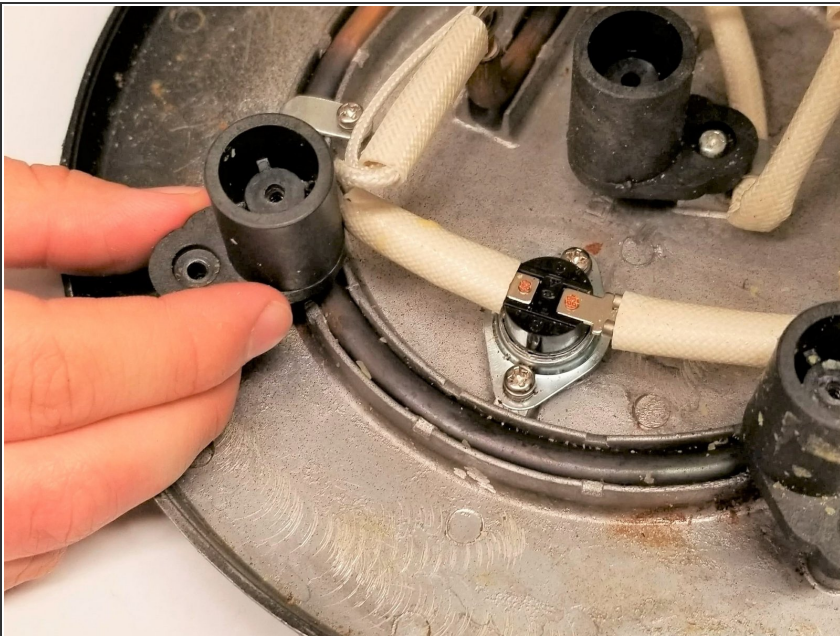
- Lift dipping pan from the plastic casing.
- ⓘ Dipping pan connects to plastic casing with nondetachable wiring.
 - The two wires connected to the black connector transfer the AC power from the base to the heating coil underneath the pan surface.
 - White sleeves surround the wires, protecting them from heat damage.
 - The black connector also holds a grounding strip not connected to a wire.
- ⓘ Used crepe makers will probably look as dirty as this. Unless you are the cleanest person to ever exist.

Step 4



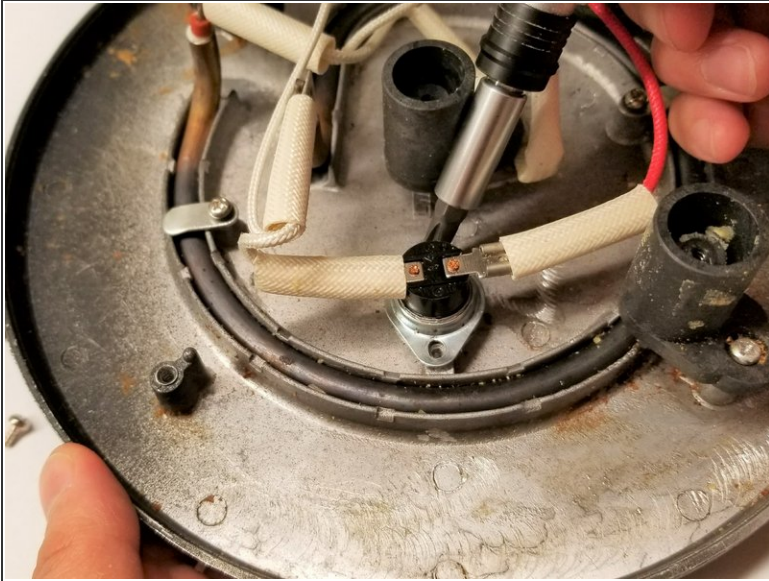
- Unscrew 3 #1-20x10mm screws connecting the top of the handle to reveal the inside of the handle, switch wiring, and yellow tab covering the LED.
- When the switch is open, the flow of electricity is interrupted and no heating occurs

Step 5



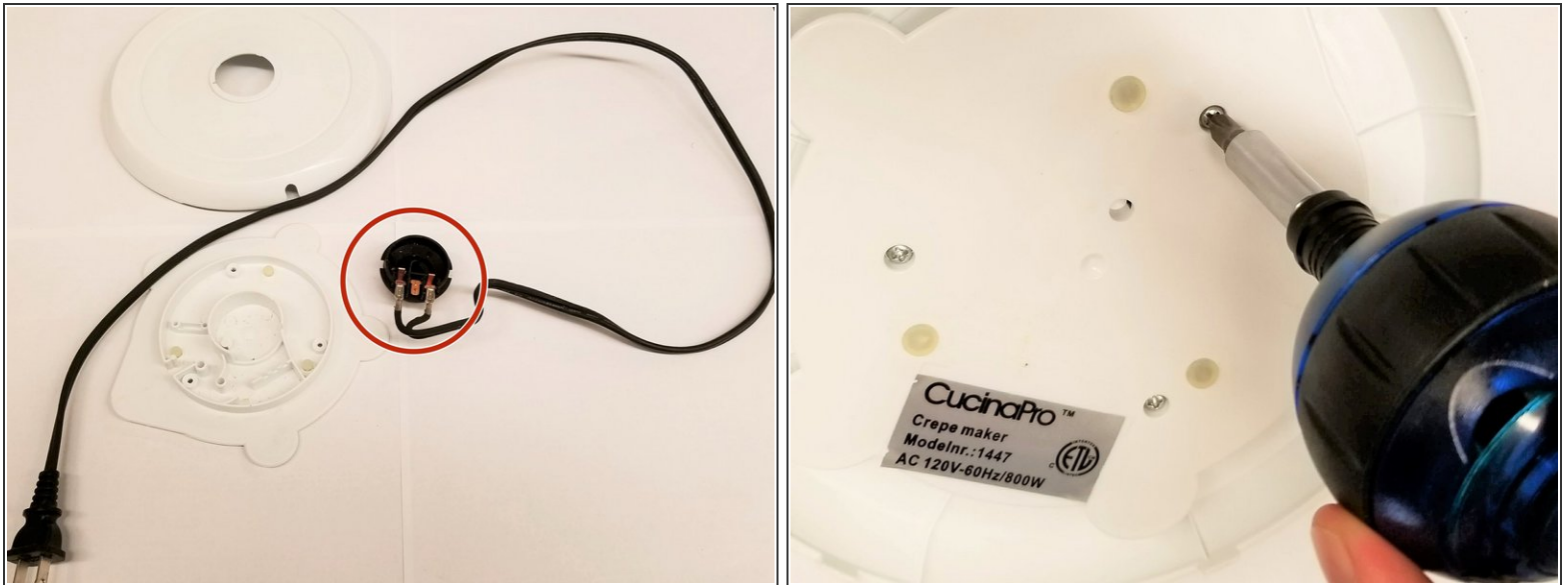
- Underneath the heating element are 4 black stands that provide stability by ensuring space between the bottom of the pan and the dipping plate.

Step 6



- Unscrew #1-20x6mm screw on black temperature sensor to reveal a gooey substance between sensor and the metal undercoating of the heating surface
- While the coil heats and the heating surface is below optimal cooking temperature, power enters the coil and turns on the LED.
- Upon reaching the optimal temperature, the power to the coil shuts off and the LED turns off, indicating the crepe is done.

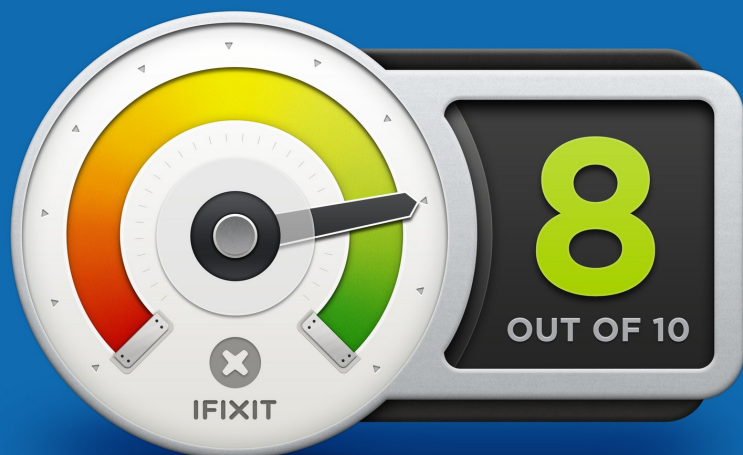
Step 7



- Unscrew 3 #1-20x10mm screws from the bottom of the power base and separate 2 base pieces and a connector piece.
- Connector piece allows electrical power flow from the wall socket to the heating body.
- Also spy a model number on the bottom.

Step 8 — Final Thoughts

REPAIRABILITY SCORE:



- CucinaPro Cordless Crepe Maker earns a **8 out of 10** on our repairability scale (10 is the easiest to repair).
- The Crepe Maker is easy to use and handle; the overall system is relatively light.
- Temperature sensor made it easy to know when the crepe was done cooking.
- Dipping plate was an effective way to put crepe batter on plate.
- It is easy for batter to get in between the crevices of the device.
- There is no easy way to clean the device.
- Surface area of the dipping plate is relatively small.