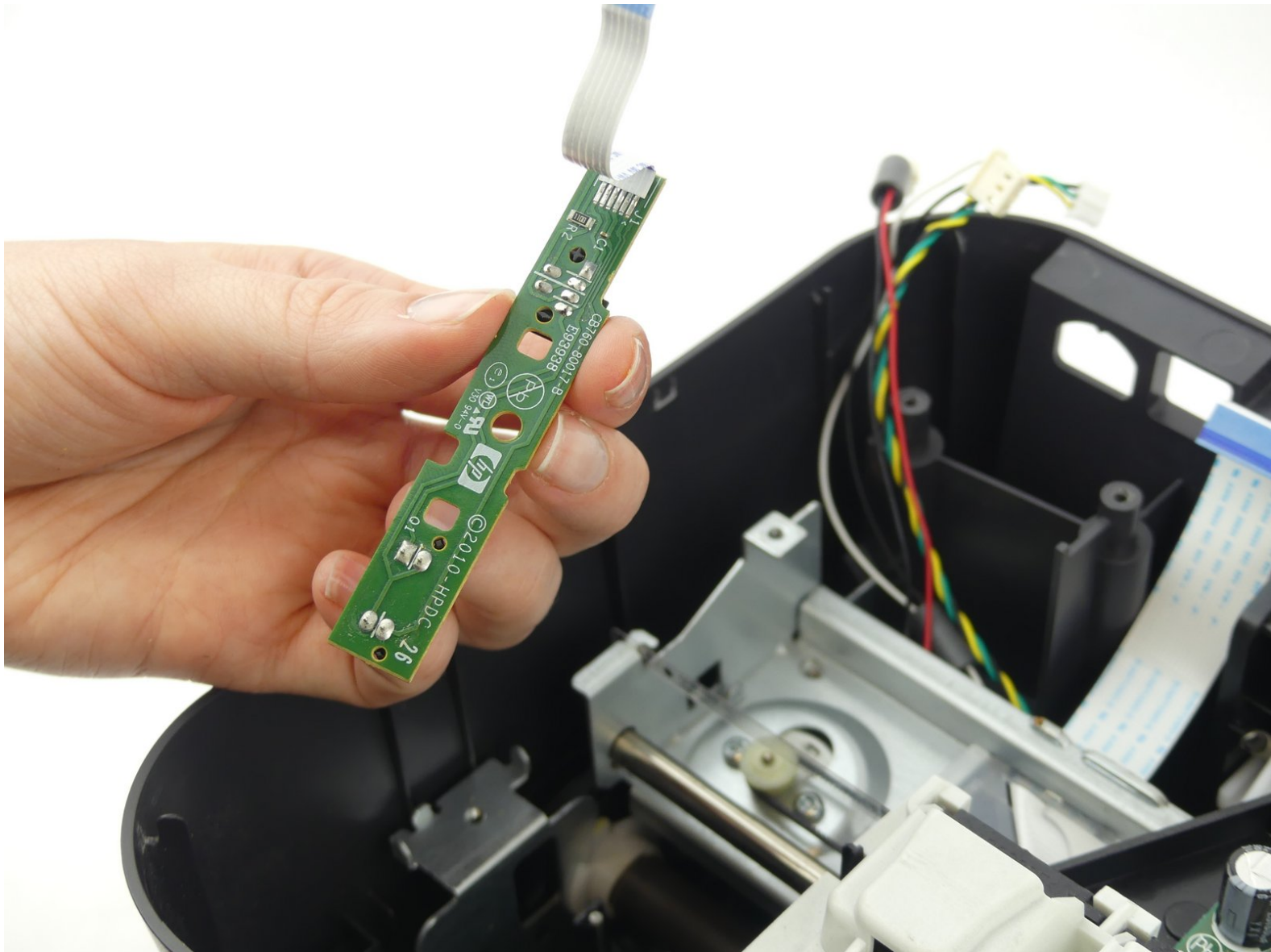




# HP Deskjet 1000 J110a Paper Control Sensor Replacement

How to replace the Paper Control Sensor component on an HP Deskjet 1000 printer.

Written By: Colin Tourjee



---

## INTRODUCTION

If your printer is not dispensing paper, and it makes no sense, the Paper Control Sensor may not be sensing the paper. The Paper Control Sensor is soldered to a small circuit board. Be careful when handling electronic circuits to avoid damaging it or to avoid damaging yourself. This guide will walk you through on how to replace the Paper Control Sensor.



### TOOLS:

- [T10 Torx Screwdriver](#) (1)
  - [Tweezers](#) (1)
-

## Step 1 — Cover Removal



- Remove the two 13 mm screws located on the back of the printer using a screwdriver with the T10 torx bit (star-shaped).

## Step 2



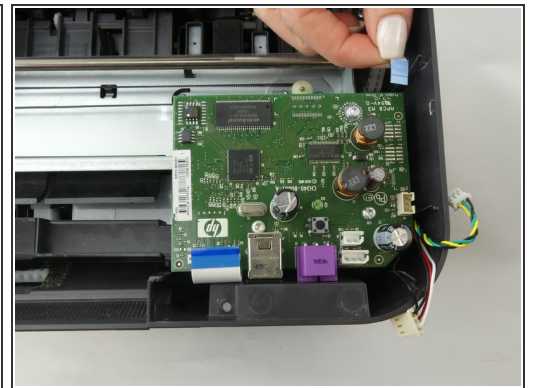
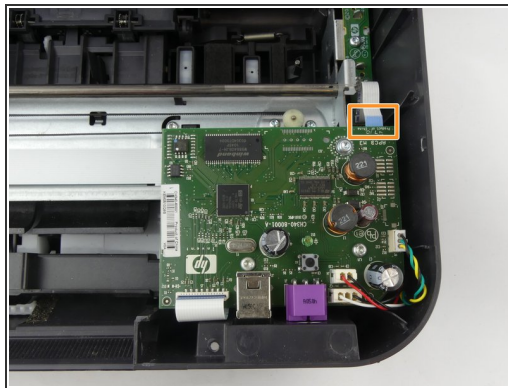
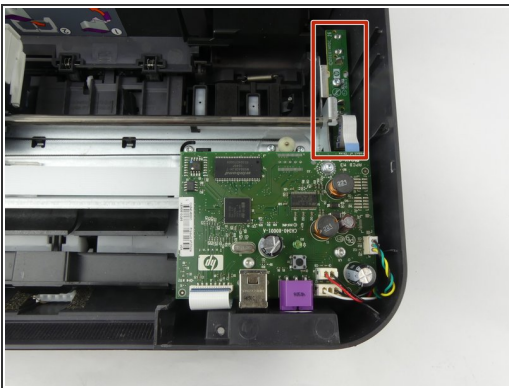
- In the front of the printer, open the tray where the paper comes out and remove the two 13 mm screws located under the top of the printer.

### Step 3



- With the front of the printer facing you, lift and raise the left side of the panel (like opening a book in reverse) until it disconnects from the clip on the right side of the panel.

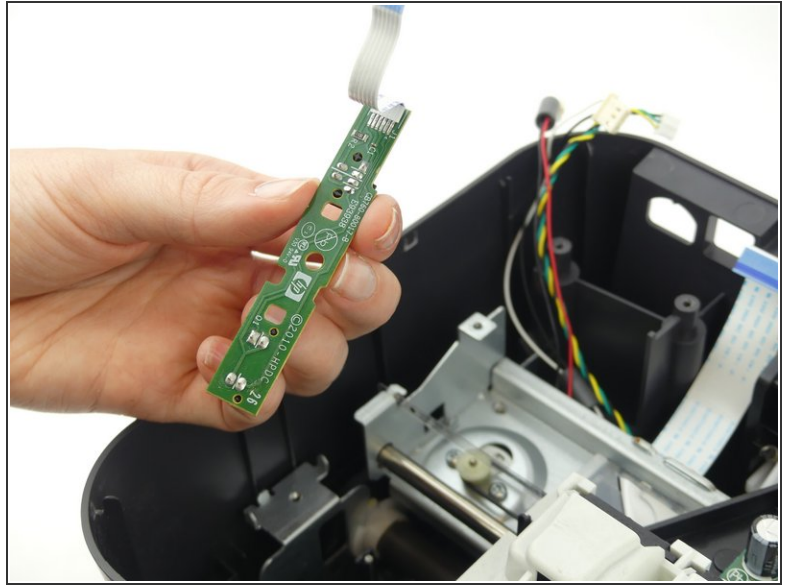
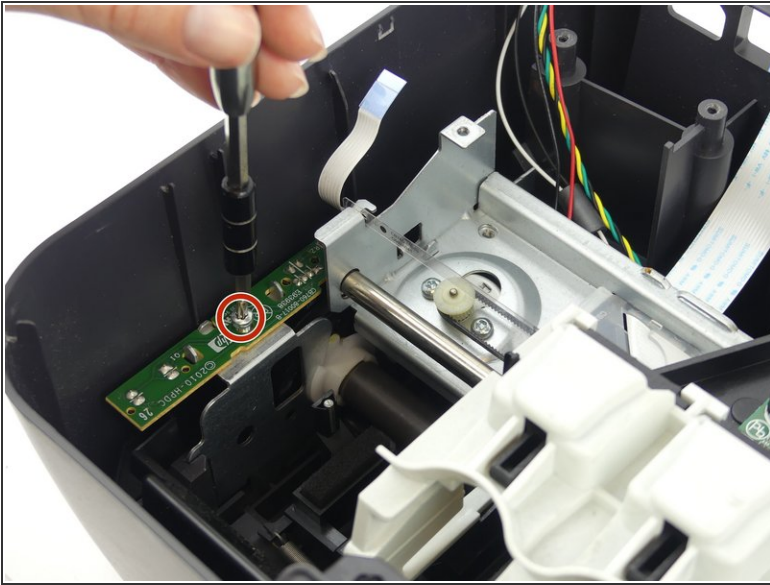
### Step 4 — Paper Control Sensor



- Locate the paper control sensor.
  - ⓘ You can find the sensor, with the back of the printer facing you, on the right, and in front of the main circuit board. The paper control sensor will also be attached to a small circuit board. You will be replacing this circuit board.
- Locate and unplug the connector which connects the sensor board to the main circuit board.
  - ⓘ Use tweezers if unplugging by hand is too difficult.



## Step 5



- Locate and remove the 8mm screw with a screwdriver and the T10 torx bit, then remove the paper control sensor board.
- ⓘ In this picture, the main circuit board is removed. It is not necessary to remove the main circuit board unless the paper control sensor is not the only part being replaced.

To reassemble your device, follow these instructions in reverse order.