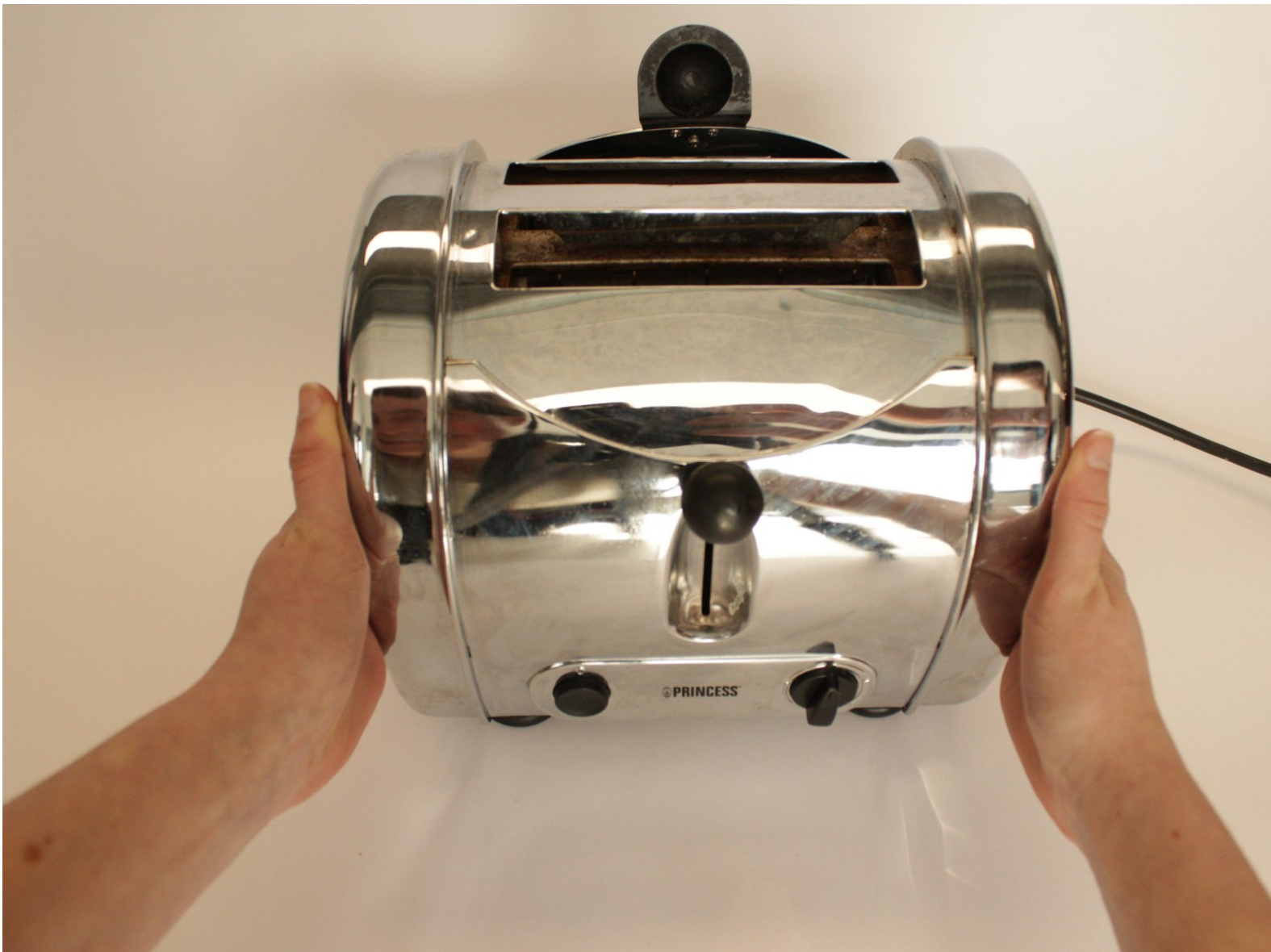




Princess 2385 Disassembly

A full disassembly of a broken Princess toaster into its most basic parts.

Written By: Luc van Calmthout



INTRODUCTION

We disassemble a broken Princess toaster into its most basic elements. We try to damage the least amount of parts possible, so we for example only cut a piece when absolutely necessary.



TOOLS:

- [PoziDriv #1 Screwdriver](#) (2)
1x80 & 1x400
 - [TA20 Screwdriver](#) (1)
 - [Pipe Wrench](#) (1)
 - [Cutting Plier](#) (1)
-

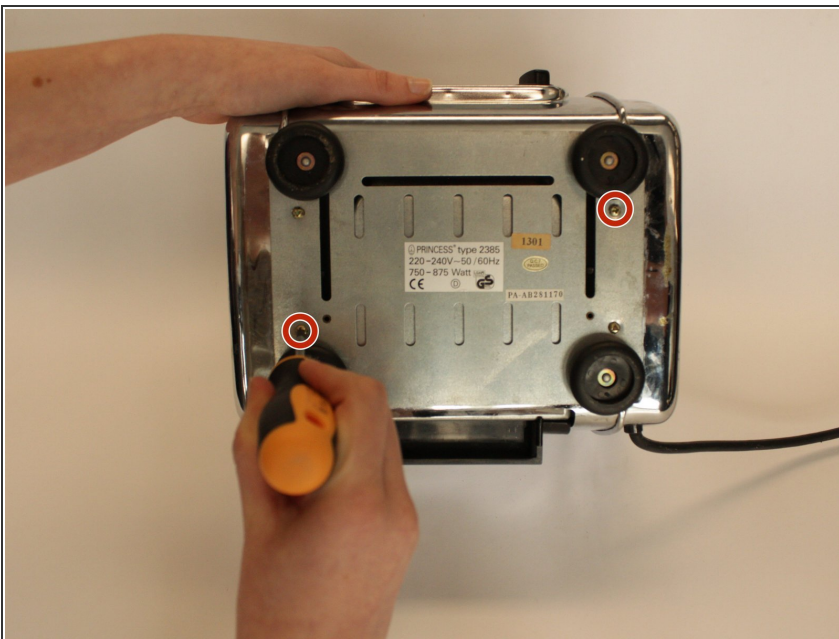
Step 1 — Princess 2385 Disassembly



⚠ Make sure the toaster is unplugged from any power source.

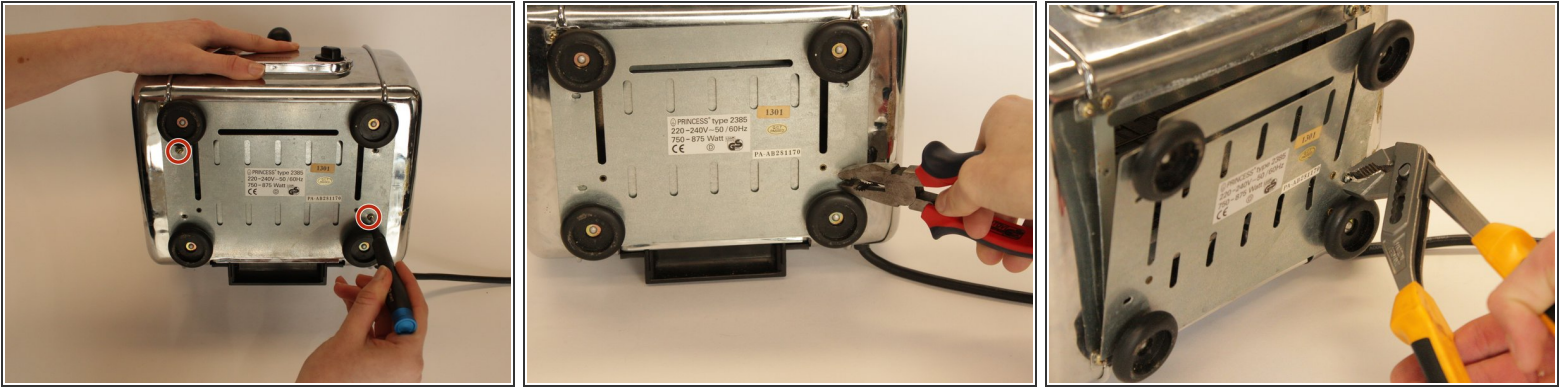
- Turn the toaster 90 degrees so that you can see the bottom.

Step 2



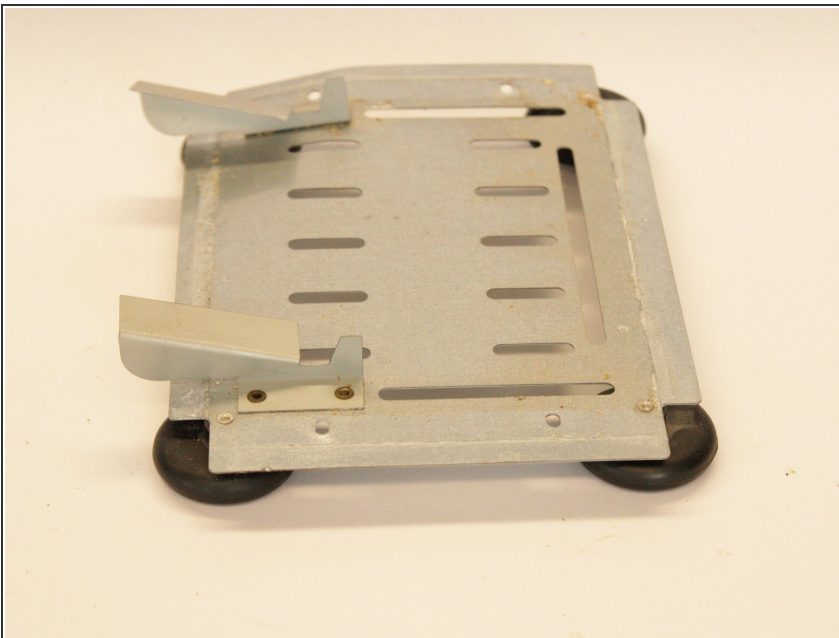
- Use a crosshead PZ #1 screwdriver to unscrew the bottom left and top right 5 mm crosshead screws.

Step 3



- Use a triangle TA 2.5 screwdriver to unscrew bottom right and top left 5 mm triangular screws.
- ⓘ If you can't manage to open them with this tool, or don't have this tool available, you can try using pliers or a pipe wrench.

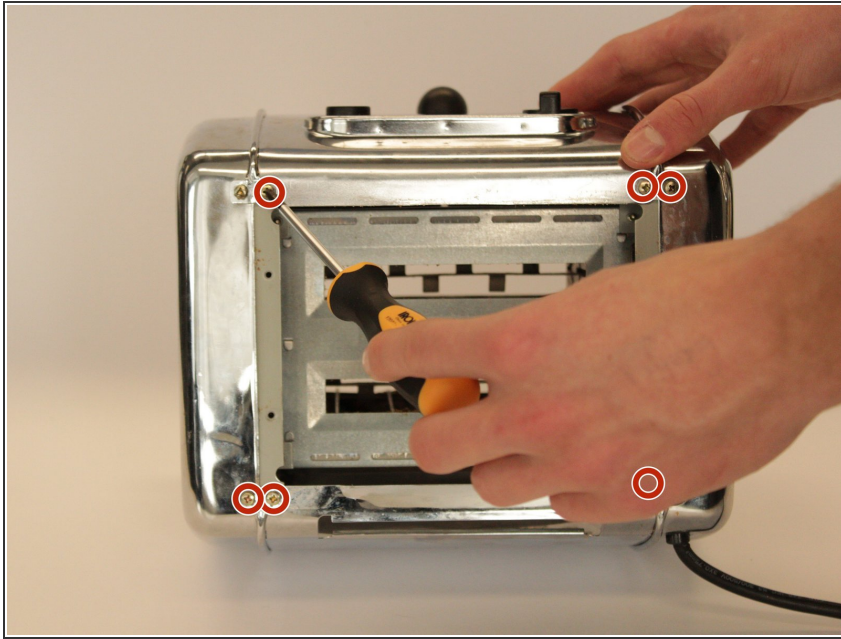
Step 4



- Remove the bottom plate from the main body of the toaster.

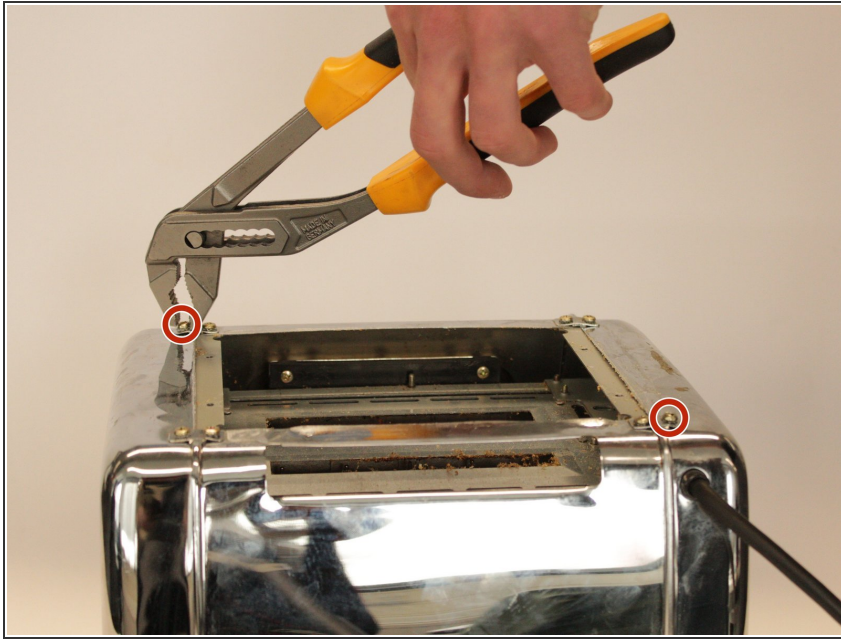
⚠ Watch out for sharp edges!

Step 5



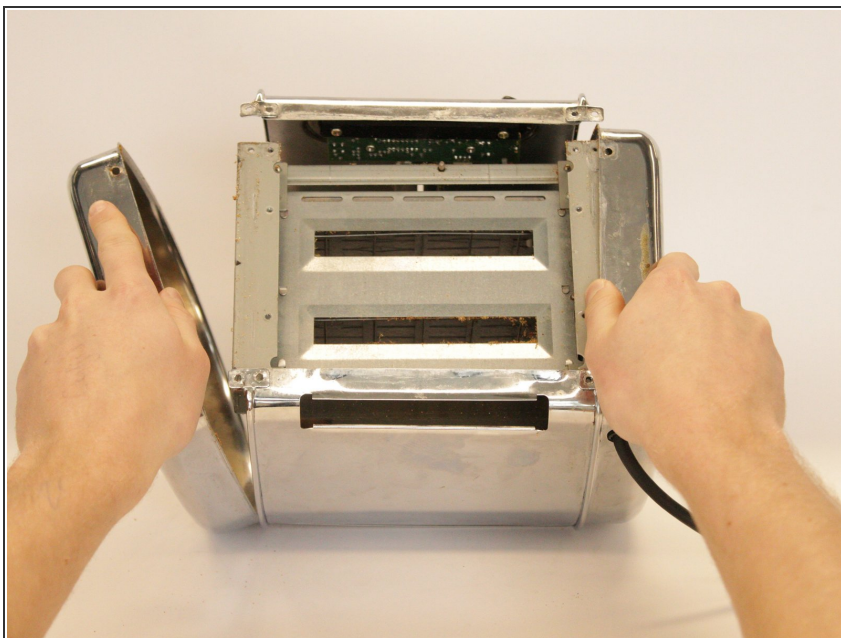
- Unscrew the six 5 mm crosshead screws visible on the plate underneath the bottom plate. Use the same crosshead screw driver you used for the bottom plate.

Step 6



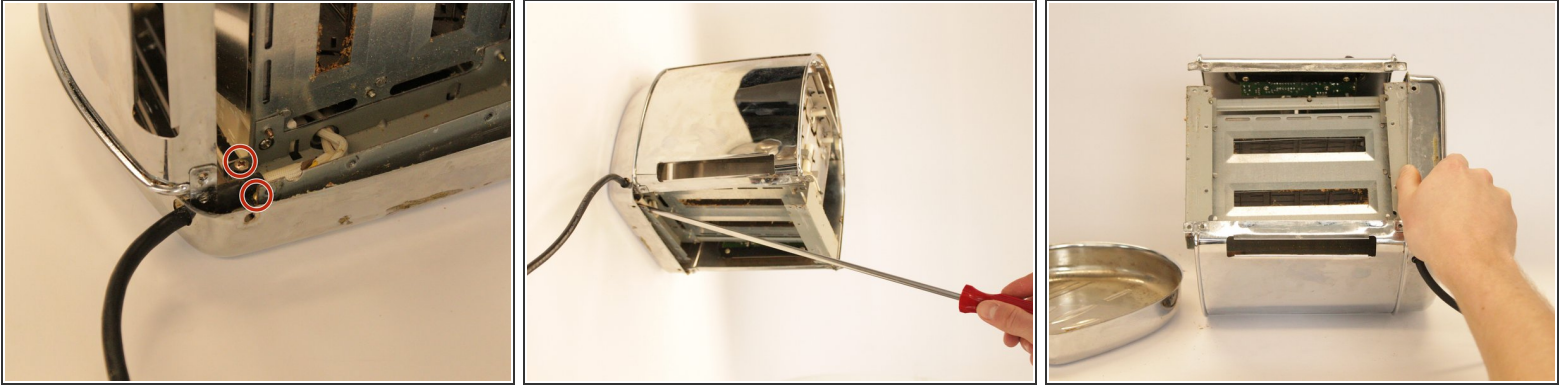
- Unscrew the two 5 mm triangular screws with the triangular screwdriver. Again; use a set of pliers or a pipe wrench to get them loose if you cannot get it done with the screwdriver.

Step 7



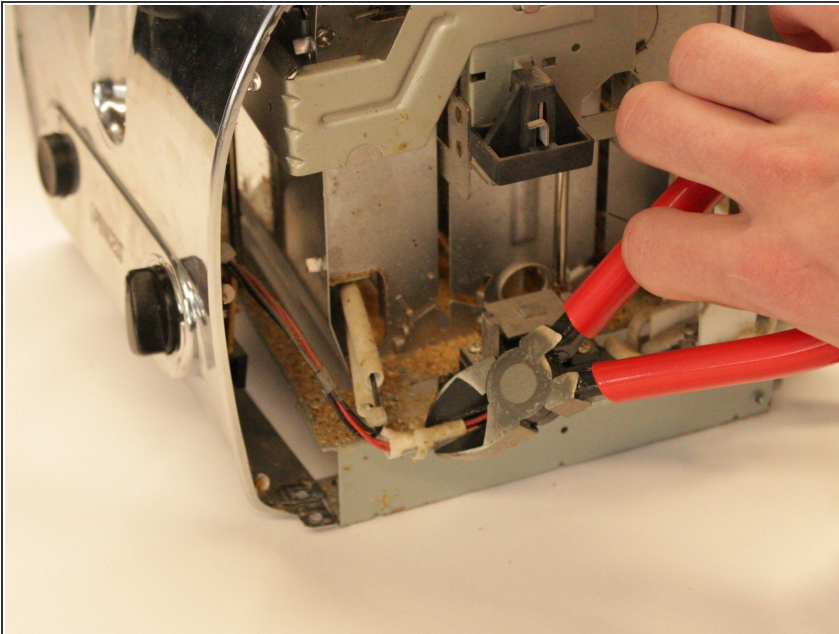
- Remove the left side of the toaster.

Step 8



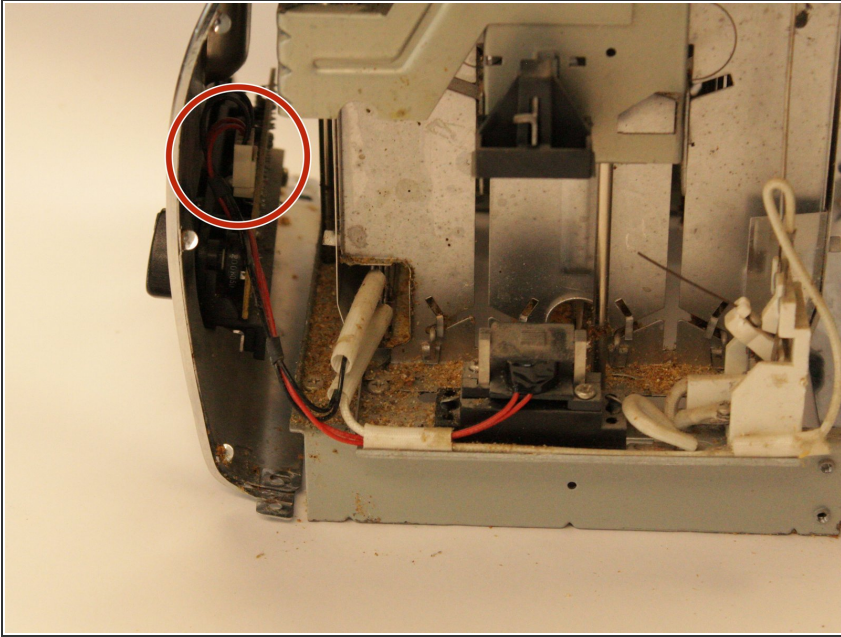
- With a long PZ 1 screwdriver, remove the two 4mm screws that connect the plug.
- Remove the right side plate partly.
- ⓘ The other side plate cannot be removed entirely, as the cable is still attached.

Step 9



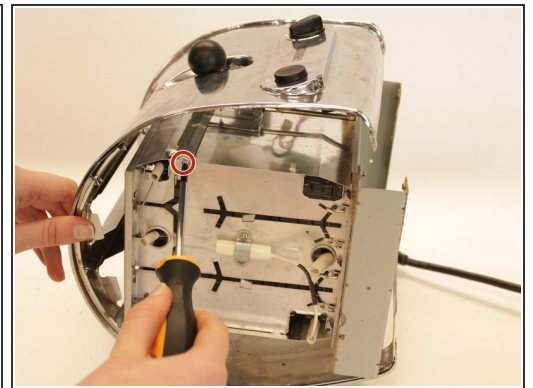
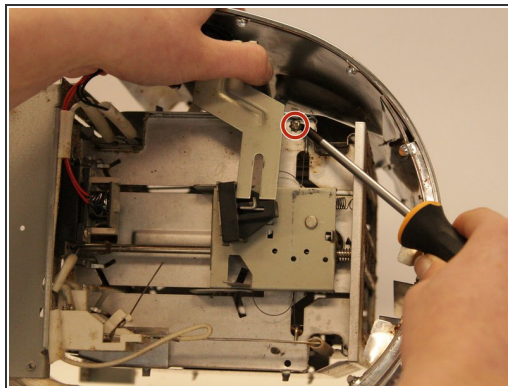
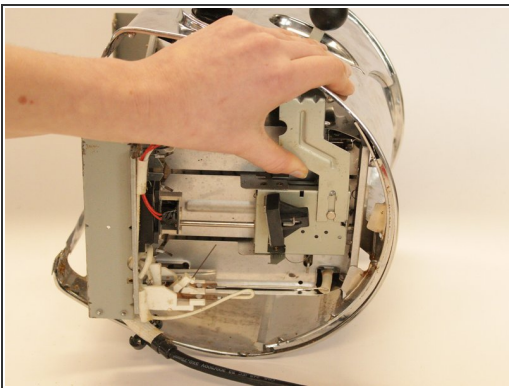
- With a cutting plier, cut the 4 tie wraps that hold the wires together.
- ⚠ Do not cut the wires themselves.

Step 10



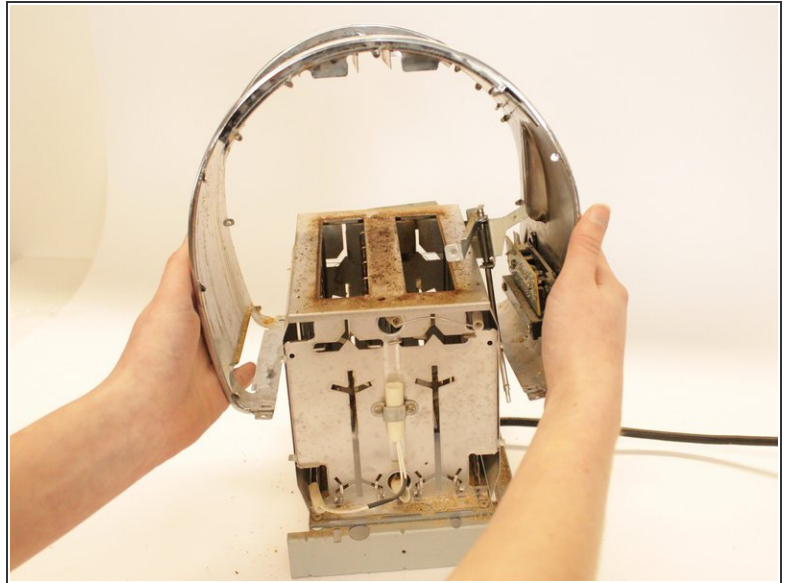
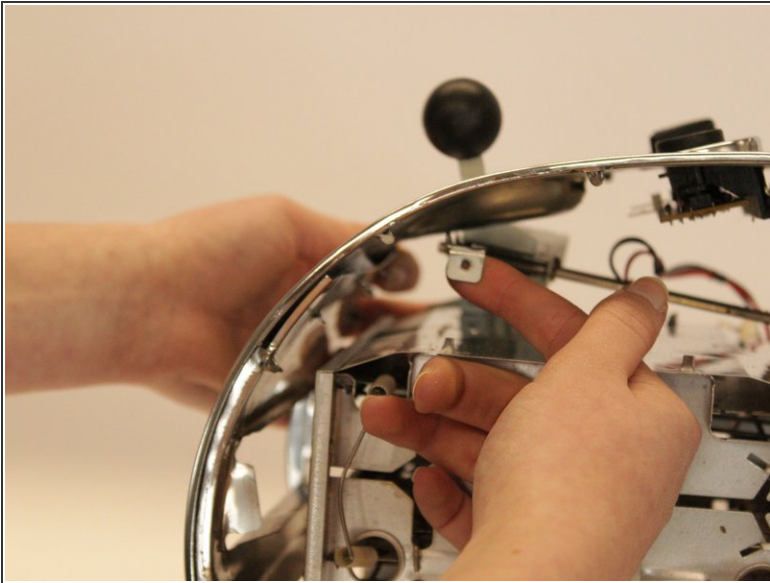
- Unplug the ZIF connector from the circuit board.

Step 11



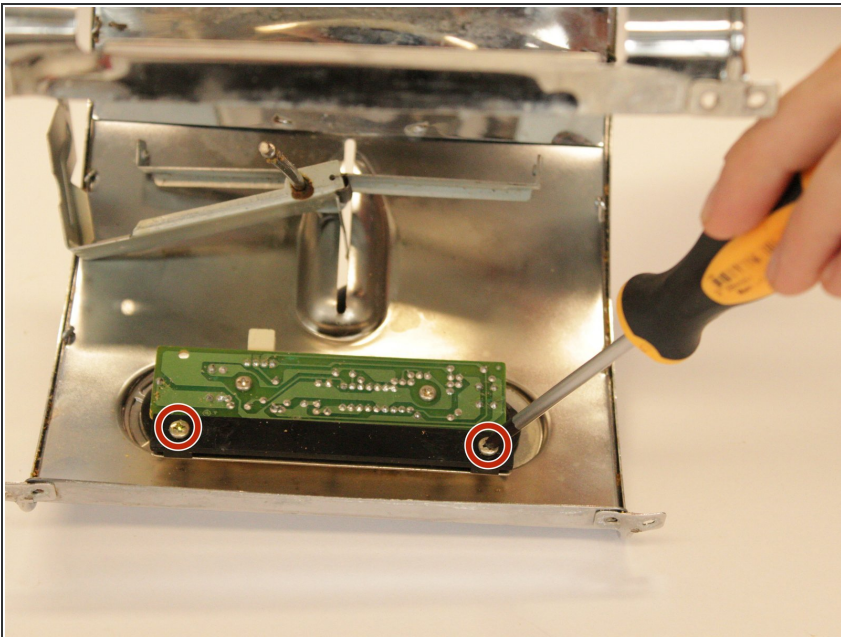
- Lift the part attached to the handle at the front of the toaster. Hold this part up.
- Unscrew the two 4 mm screws connecting the part of the handle to the core. One screw is located underneath the part you just lifted, the other screw is located at the other side of the toaster.

Step 12



- Lift up the part of the handle together with the top cover of the toaster.

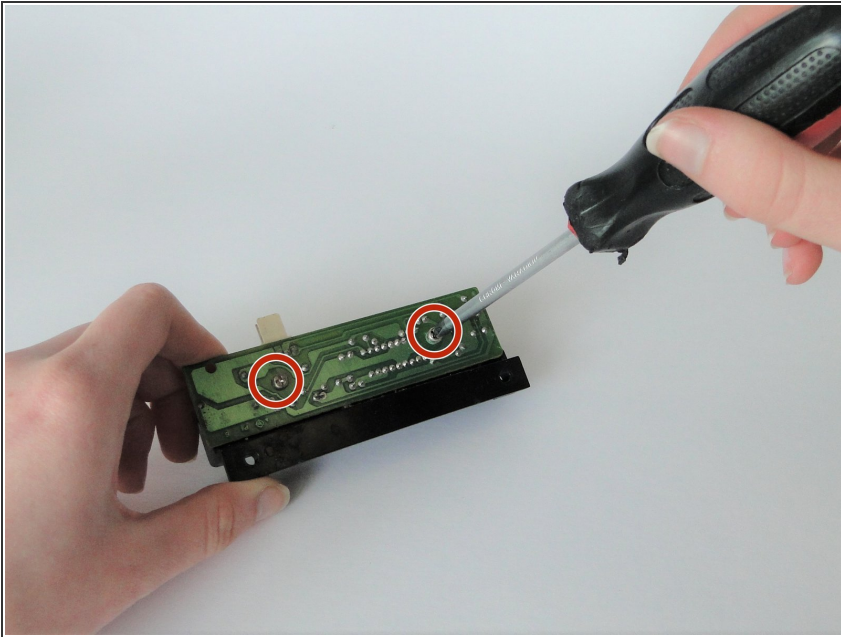
Step 13



- Remove the electric circuit board from the top cover by unscrewing the two 4 mm screws attaching it.

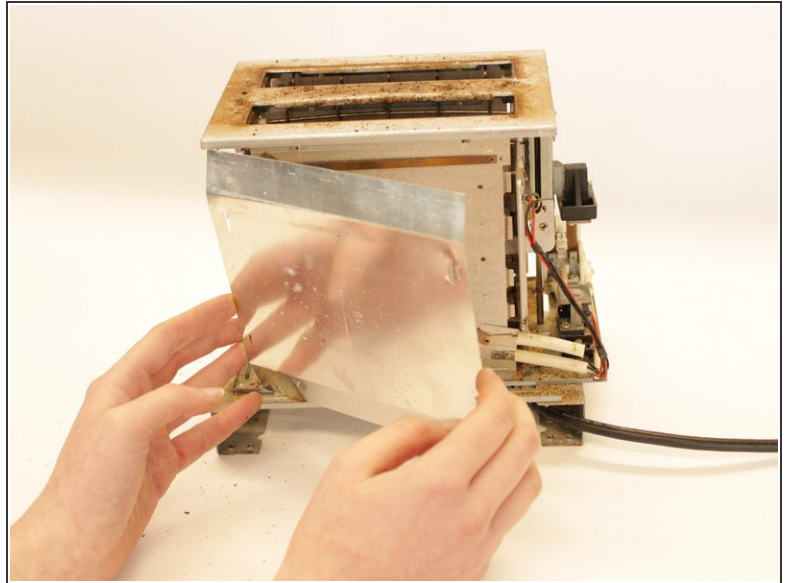
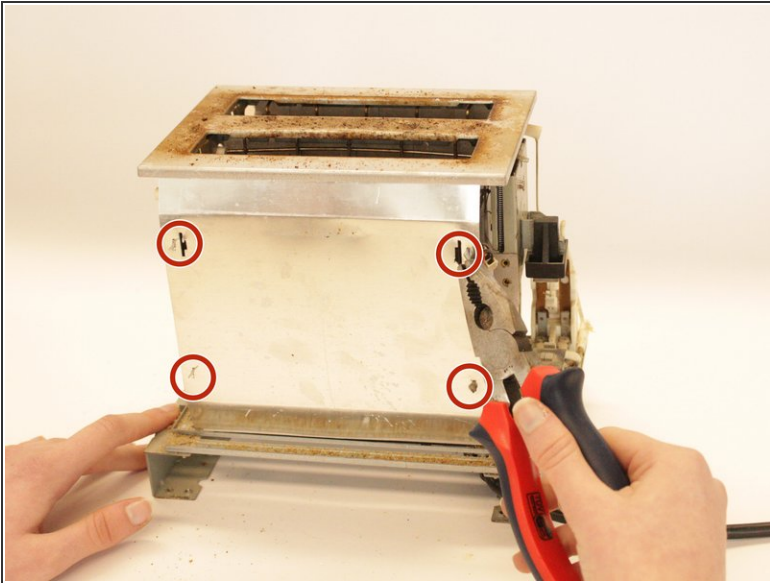
This can be done with the crosshead screwdriver you used before.

Step 14



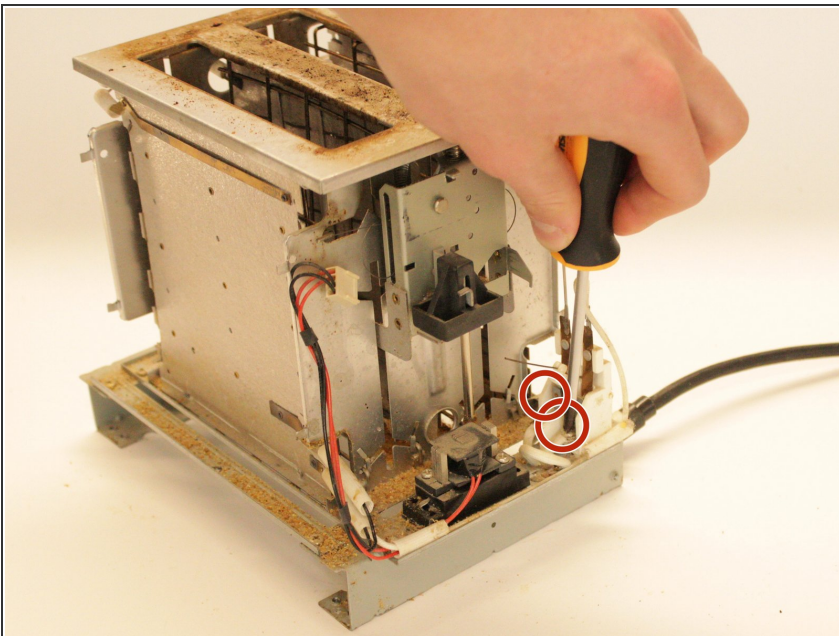
- Removed the circuit board from the plastic black part holding it by unscrewing the two 8 mm crosshead screws.

Step 15



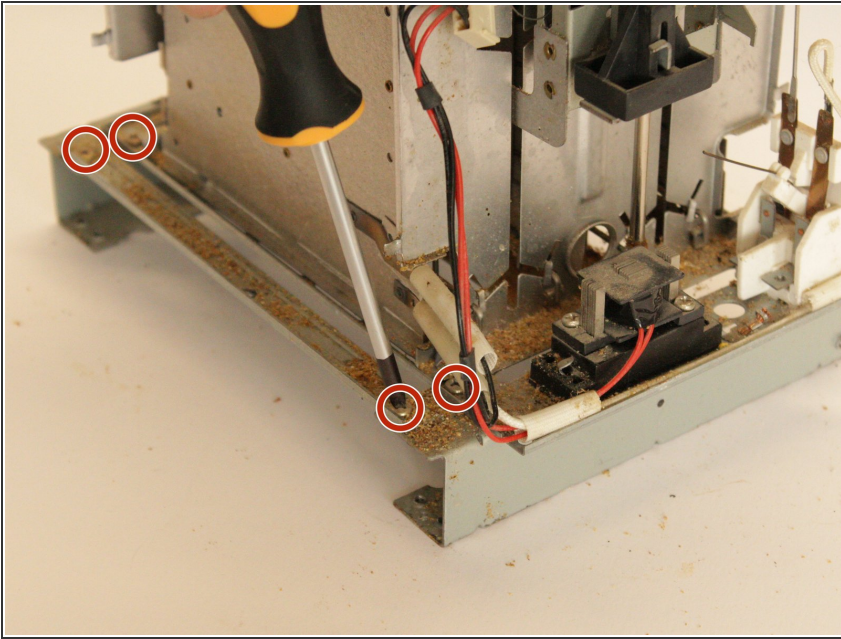
- To disassemble the core of the toaster, use pliers to twist the 4 metal clips that stick out on each side of the core (so, 8 in total).
- Remove the two sides of the core.

Step 16



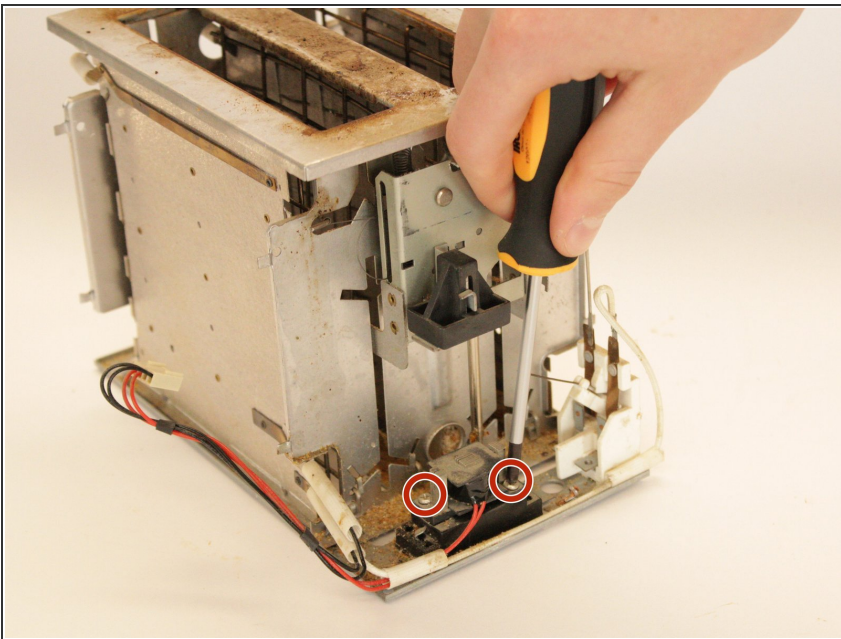
- Unscrew two 10 mm crosshead screws connected to the bottom of the core to remove the cable.
- To remove the cable completely, cut the soldered cables with a cutting tool.

Step 17



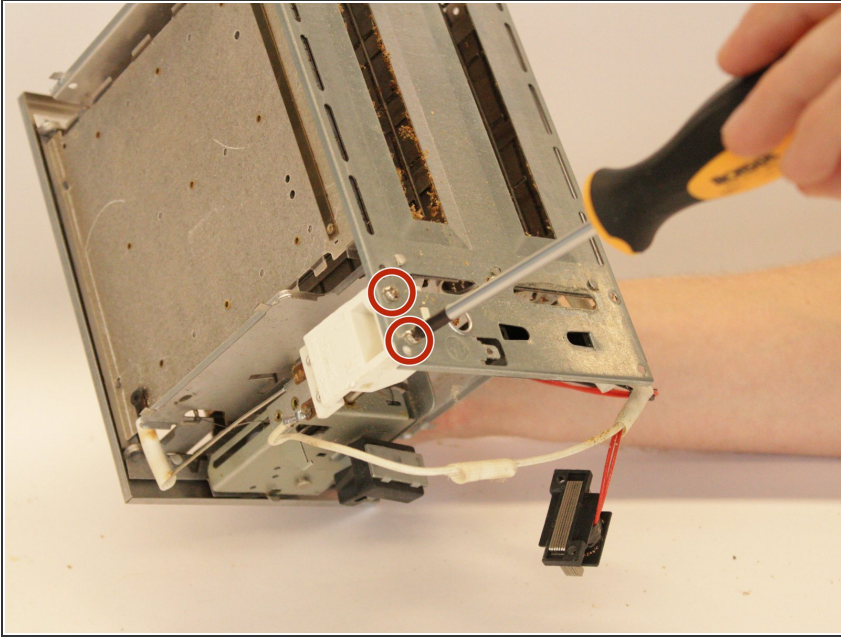
- Unscrew the eight 8 mm crosshead screws from the bottom of the core to remove the two legs from the base.

Step 18



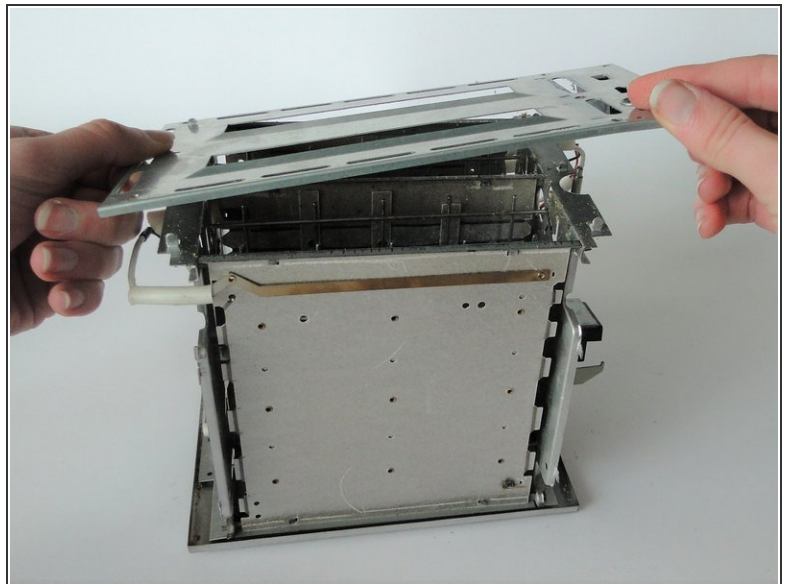
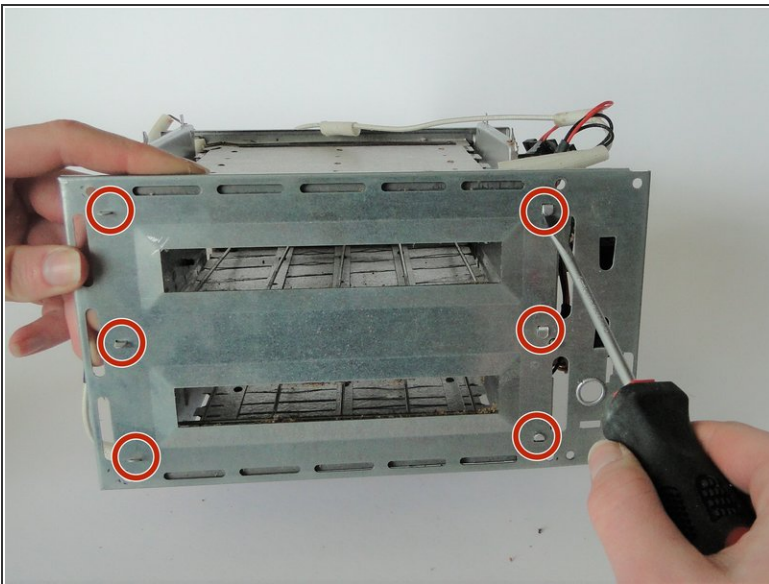
- Unscrew the two 10 mm crosshead screws that connect the black wire part to the bottom of the core.

Step 19



- Unscrew the two 10 mm crosshead screws from the white part that is attached to the top of the core.

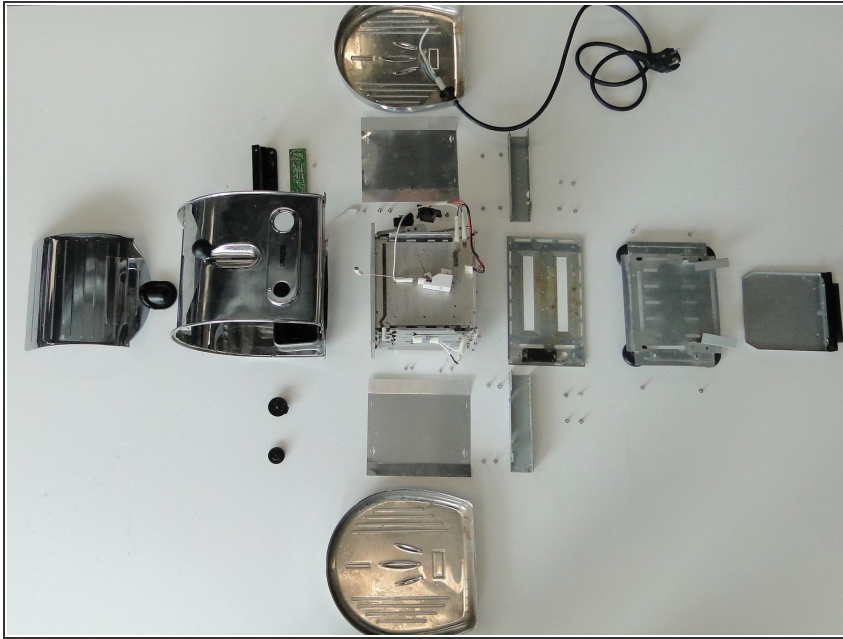
Step 20



- You can remove the bottom plate from the base by bending the 6 metal clips that stick out. This can be done with a plier or with a flat screw driver.

⚠ Be careful of sharp edges.

Step 21



- To further disassemble the toaster you will need to twist more metal clips and break the pop nails that hold the base plate and some other parts together. We did not go further since for repair you will probably not need to disassemble the product further. Therefore this is our final exploded view of our disassembly.

To reassemble your device, follow these instructions in reverse order.