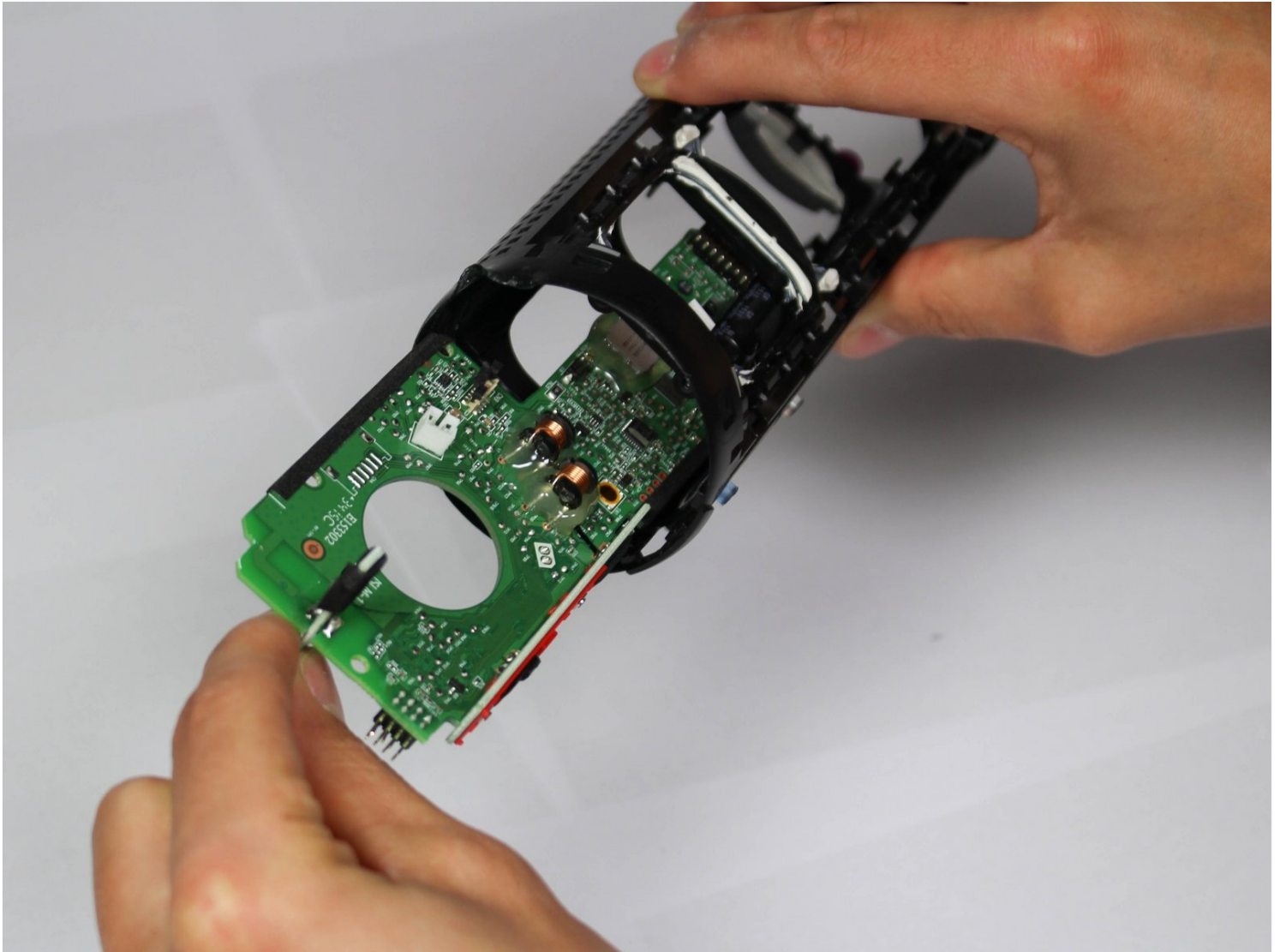




UE BOOM 2 Motherboard Replacement

This guide will show how the motherboard of the...

Written By: iRobot



INTRODUCTION

This guide will show how the motherboard of the UE Boom 2 Bluetooth speaker is removed. This is an extensive and intrusive process which removes all components of the speaker.

TOOLS:

[Metal Spudger Set](#) (1)

[Tweezers - Pro/ESD/Angled](#) (1)

[Phillips #1 Screwdriver](#) (1)

[Phillips #2 Screwdriver](#) (1)

Step 1 — Motherboard



- First, remove the D-ring located on the bottom of the UE Boom 2, the opposite end of the power button.
- Remove by twisting in a counter-clockwise motion.

Step 2



- Remove the rubber port cover, peeling up from one end.

Step 3



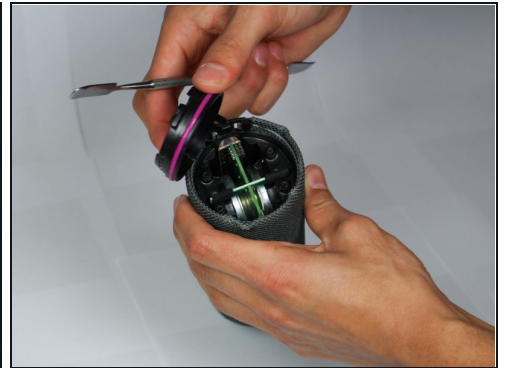
- Remove the rubber stripping using a metal spudger.
- Work around the edge of the rubber stripping slowly prying up the edge.

Step 4



- Continue removing the rubber stripping down the side.

Step 5



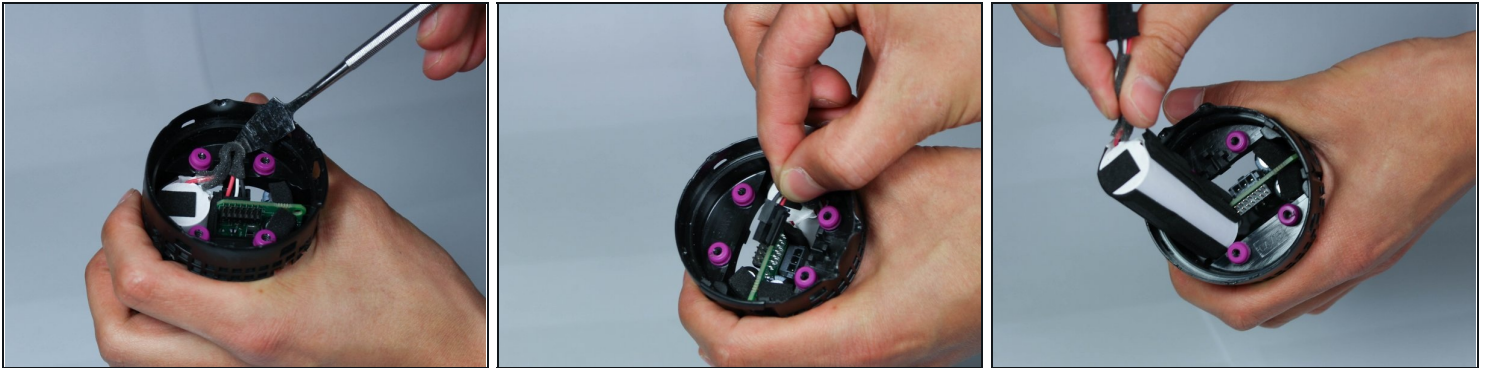
- On the bottom, unscrew the four 15mm Phillips head screws, using a #2 Phillips head screwdriver.
- Pry up at the location marked, and remove the plastic end cap.

Step 6



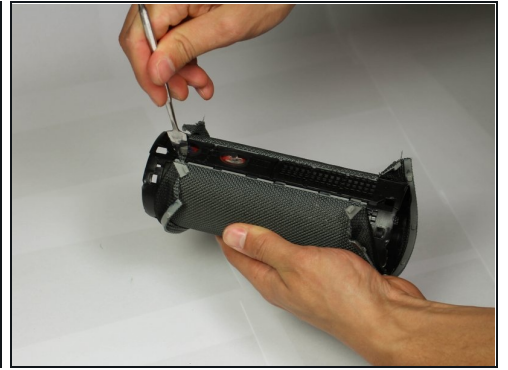
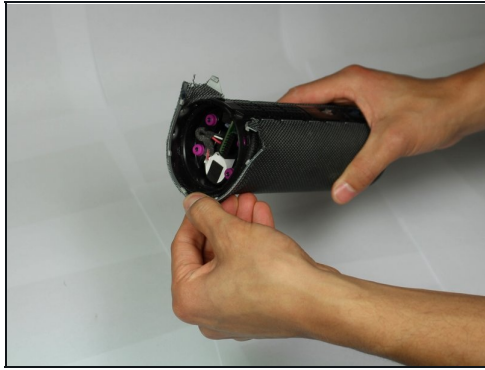
- Now on the top, unscrew the four 15mm Phillips head screws, using a #2 Phillips head screwdriver.
- Using the metal spudger, pry up the plastic cap at the point marked and remove the cap.

Step 7



- Carefully un-loop the cable with a plastic opening tool or spudger and unplug it from motherboard.
- Pull out the battery, and handle with care.

Step 8



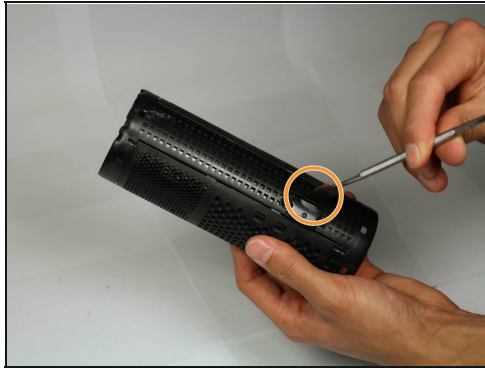
- Using the metal spudger, pry up the plastic tab on the inside.
- Pry up around the entire inside circumference.
- Repeat on the other end.

Step 9



- Using the metal spudger tool, pry up the inside edge of the mesh lining.
- Working down the strip on both sides. Careful as to not rip the mesh.

Step 10



- Unscrew the two 5 mm Phillips head screws using a Phillips head #1 screwdriver.
- Using the metal spudger, pry open the edge of the cover.

Step 11



- Using the metal spudger, pry the plastic casing up.
- Repeat on the other side of the speaker.

Step 12



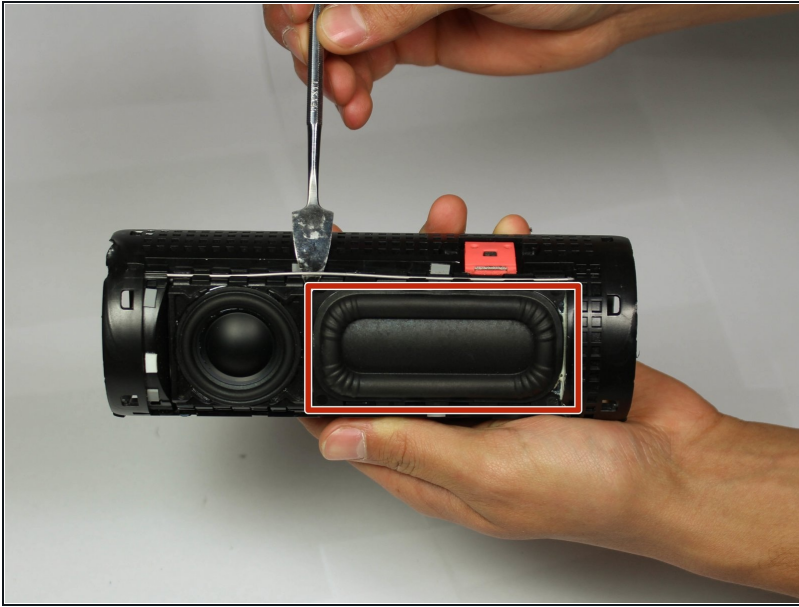
- Pull each cover off.

Step 13



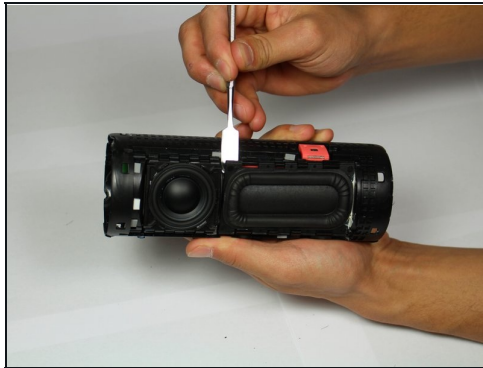
- Using the metal spudger, specifically the pointy end, find the gap between the speaker and the passive radiator (the larger rectangular speaker-like-object next to the speaker).
- Pry the metal wire up and out at exactly this gap, then slide down wire towards one end to pop it out completely.
- Once one end is out, use your fingers to gently pull off completely so as not to bend the wire too aggressively.

Step 14



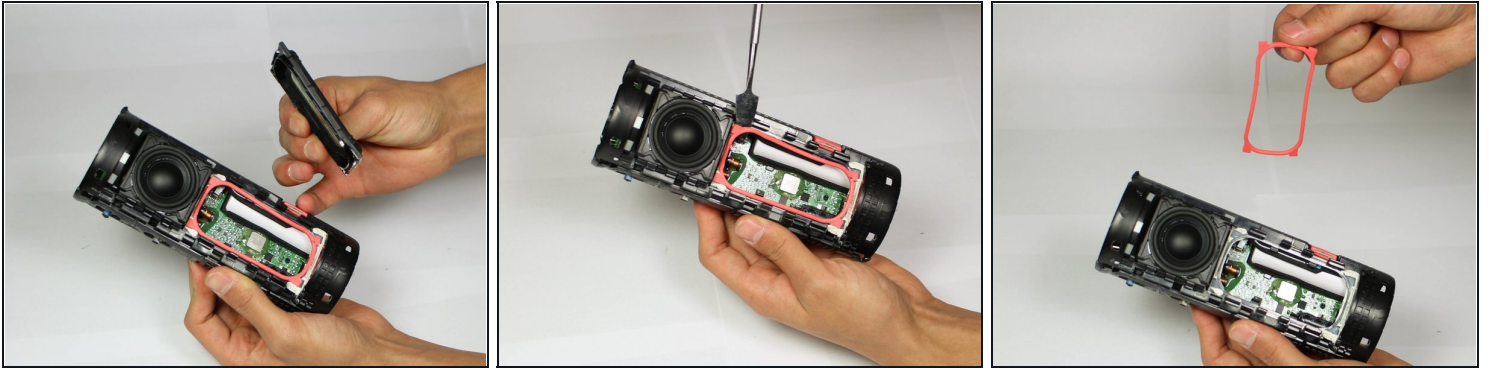
- Repeat previous process for other side of the speaker and passive radiator (boxed).

Step 15



- Using the metal spudger, work it under the passive radiator.
- Work the passive radiator up around all edges, and pull out of casing.

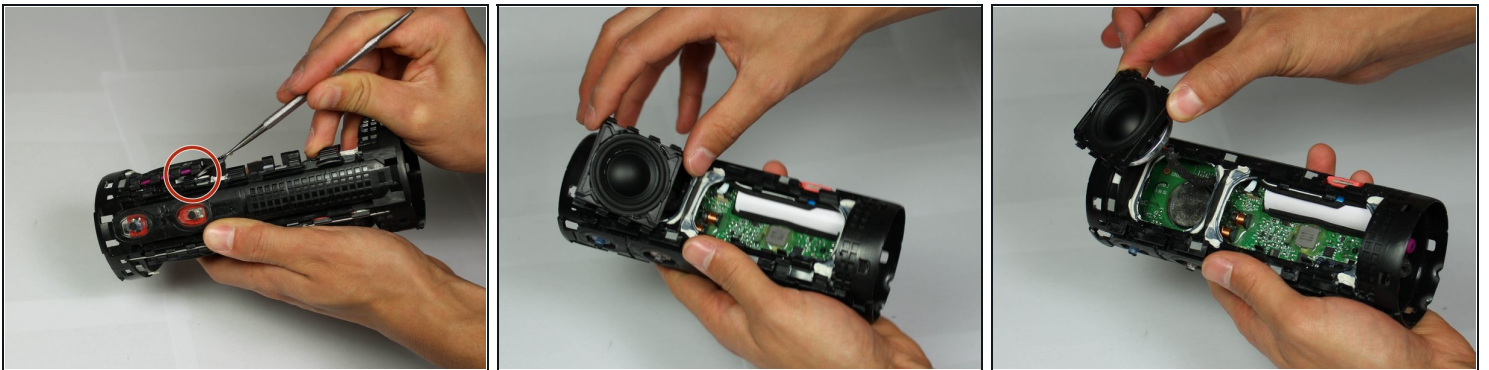
Step 16



- With the passive radiator removed, pry up the pink rubber seal using a metal spudger.
- Remove using fingers.

⚠ Do not use excessive force with the metal spudger, doing so could cut the seal.

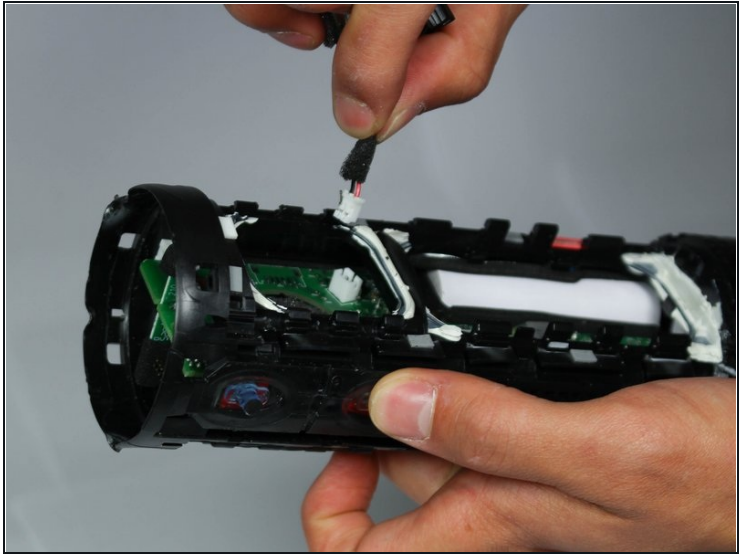
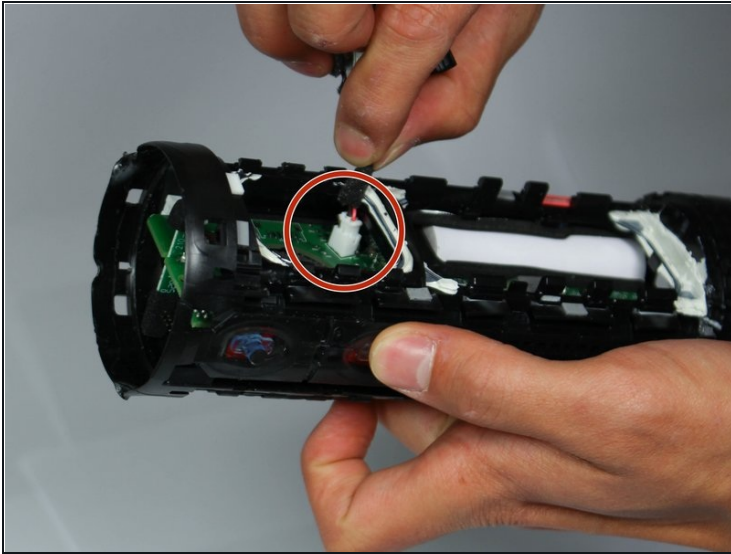
Step 17



- Using the metal spudger, work it under the edge of the speaker.
- Work around the speaker on all sides.

⚠ Pull up slowly as there is a cable attached to the motherboard.

Step 18



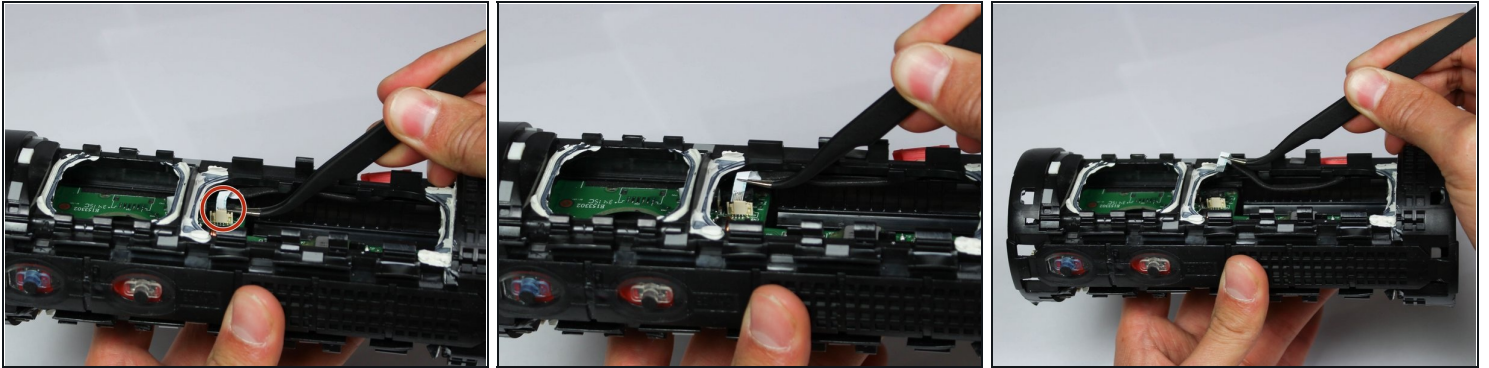
- Once speaker is detached from casing, remove cable from motherboard.

Step 19



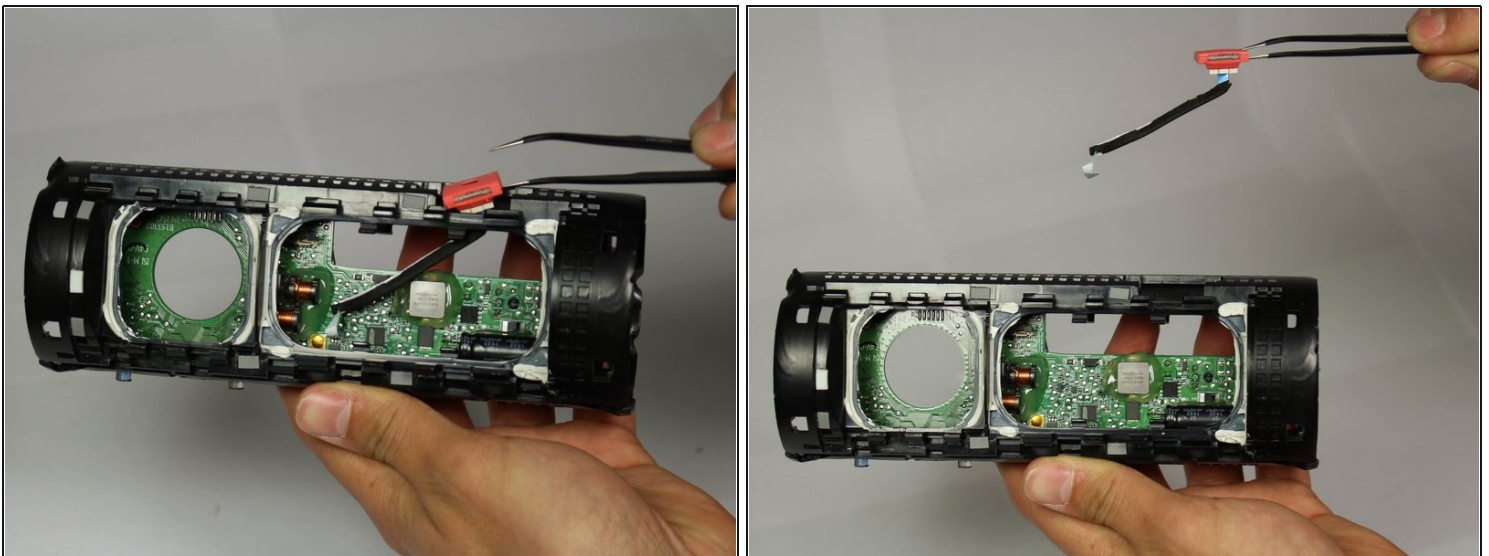
- With both the speaker and passive radiator removed from one side of the Boom 2, repeat steps 13-18 for the other side.

Step 20



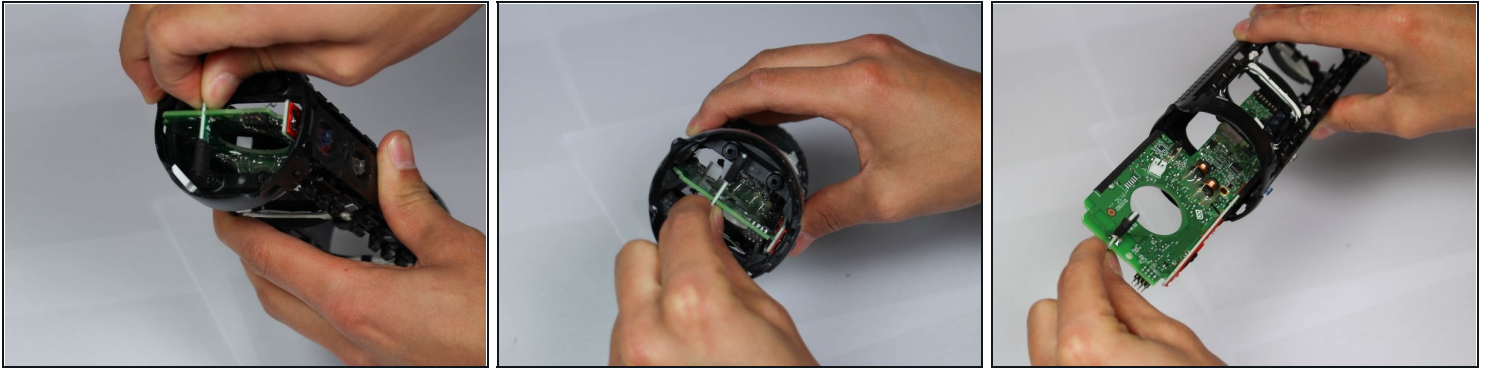
- Using angled [tweezers](#), pull up the black sheath on tan connector port.
- Gently pull the white ribbon cable out from connector.

Step 21



- With the ribbon cable disconnected from the motherboard, remove the Bluetooth antennas.

Step 22



- Confirm that all cables from speakers, Bluetooth antenna, and battery have been disconnected from the motherboard.
- Grab the single piece of green motherboard that runs perpendicular to the motherboard, and pull out of casing.

To reassemble your device, follow these instructions in reverse order.