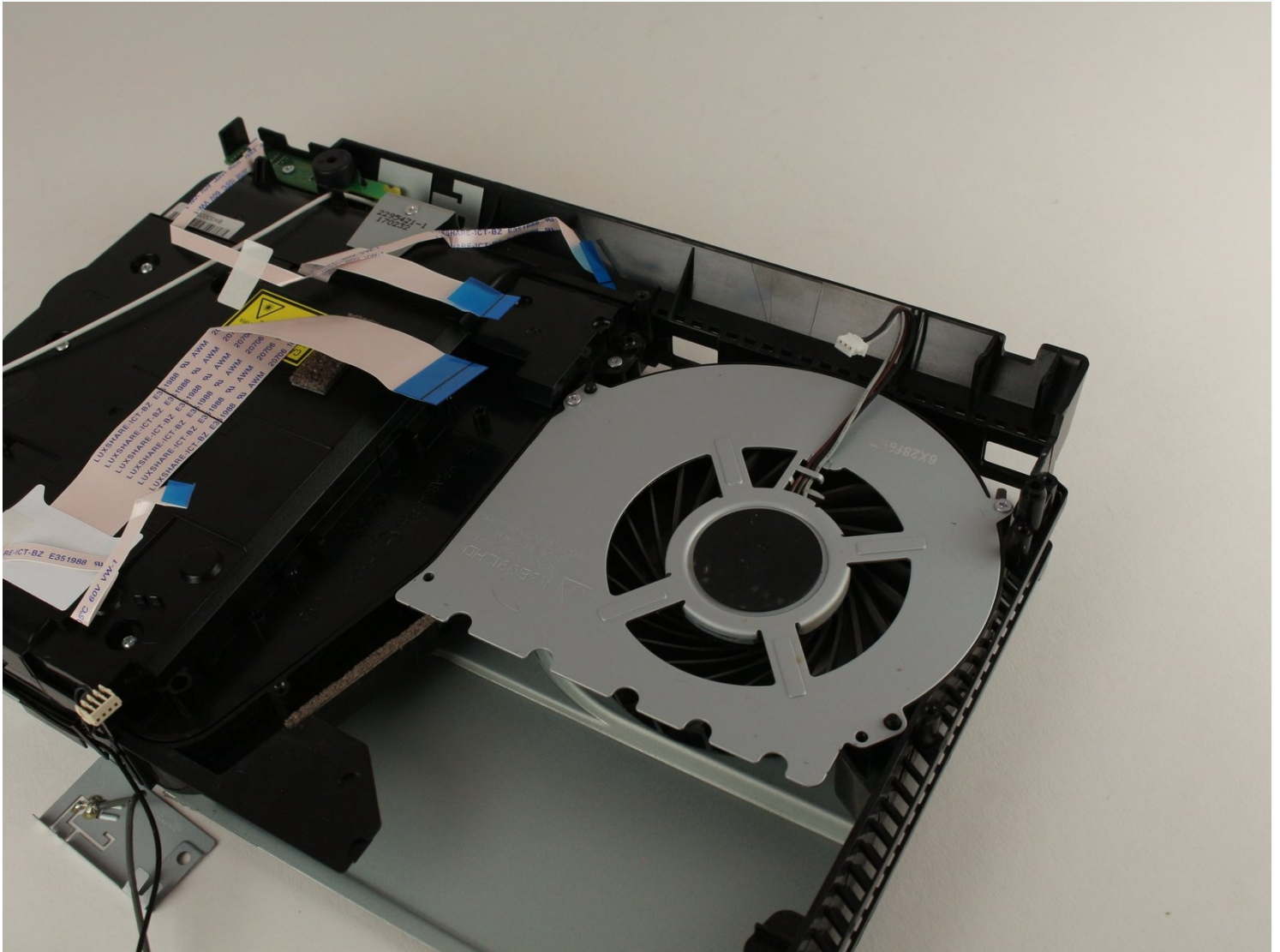




PlayStation 4 Slim Fan System Replacement

Use this guide to remove and replace the fan...

Written By: Harry Koos



INTRODUCTION

Use this guide to remove and replace the fan system in your PS4 Slim.

TOOLS:

TR8 Torx Security Screwdriver (1)
Metal Spudger (1)
Phillips #1 Screwdriver (1)
Tweezers (1)
iFixit Opening Tool (1)
Phillips #00 Screwdriver (1)

PARTS:

PlayStation 4 Slim Fan (1)

Step 1 — Bottom Cover



- Locate the plastic warranty sticker next to the three ports on the side of the console.
- Remove the warranty sticker by peeling it off with any kind of spudger.

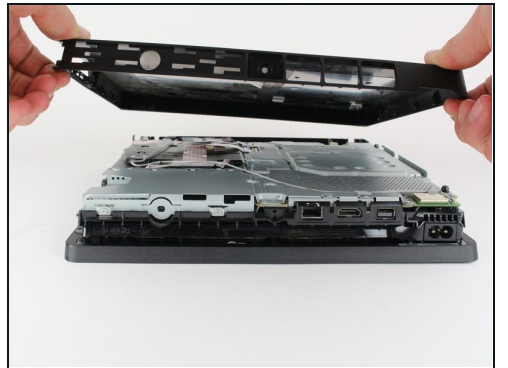
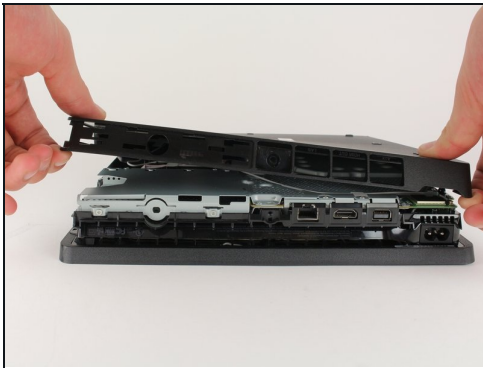
 Removing the warranty sticker will NOT cause your warranty to be null and void.

Step 2



- Unscrew and remove the now exposed 5.0mm screw using a T8 security Torx screwdriver with a counter-clockwise motion.

Step 3



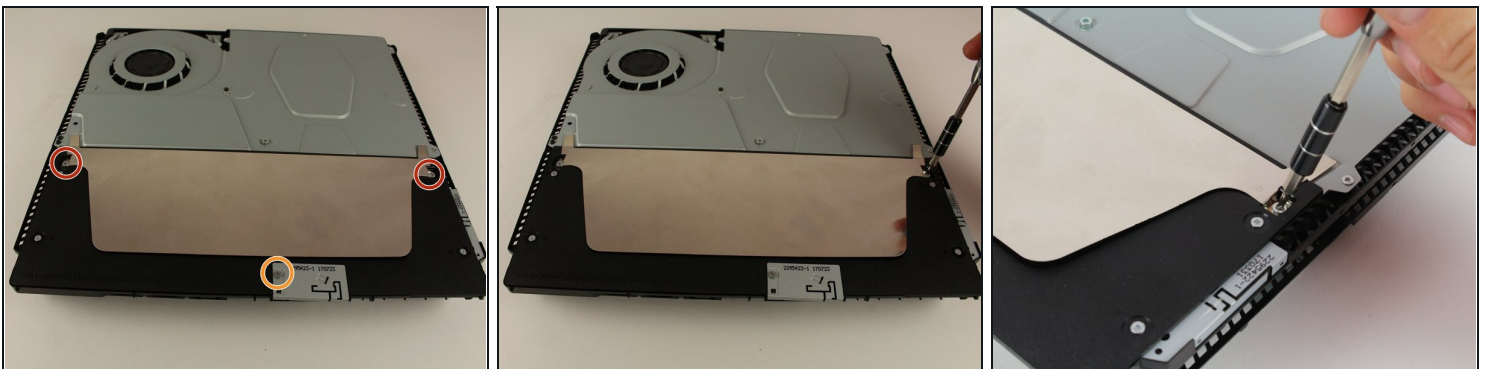
- Place the Playstation 4 Slim upside down with the side of the screw you just removed facing you.
- Pry up on the two corners that are facing you with your fingers.
- ① This may take a bit of force to open up and you will hear a fairly loud click when the bottom cover detaches.
- Remove the bottom cover by sliding it towards the back corners and lifting up.

Step 4 — Power Supply



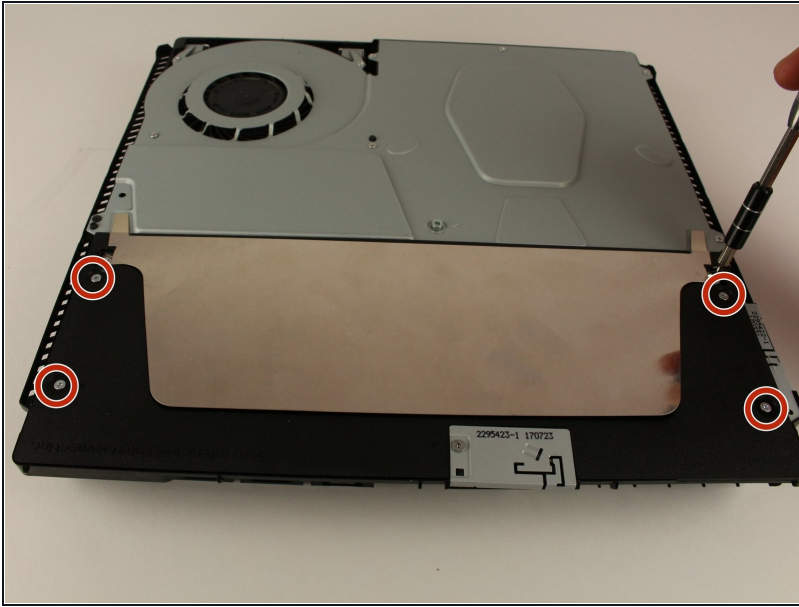
- Place the Playstation 4 Slim right side up, with the PS logo on top and the side with the words "SONY" and "PS4" facing you.
- Pry up on the two corners that are facing you with your fingers.
- ⓘ This may take a bit of force to open and you will hear a fairly loud click when the top cover detaches.
- Remove the top cover by sliding it towards the back corners and lifting up.

Step 5



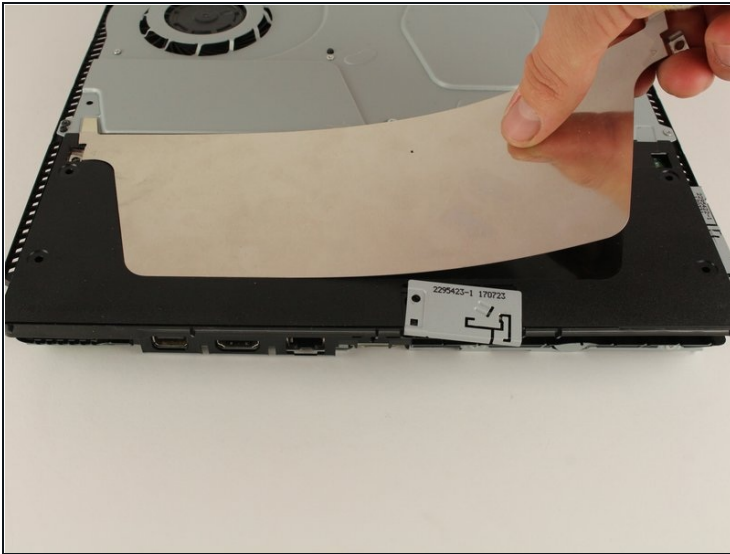
- Unscrew and remove the two screws (left one 31.0mm and right one 24.0mm) using a T8 screwdriver with a counter-clockwise motion.
- Unscrew and remove the 3.0mm screw using a Phillips #1 screwdriver with a counter-clockwise motion.

Step 6



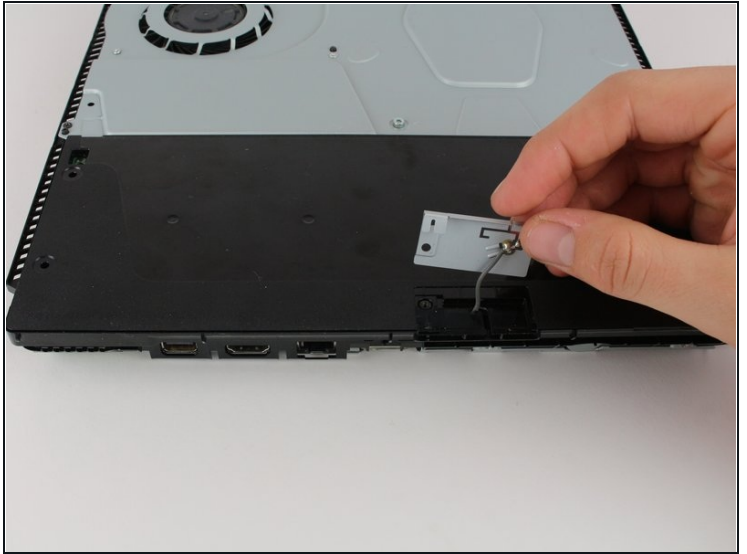
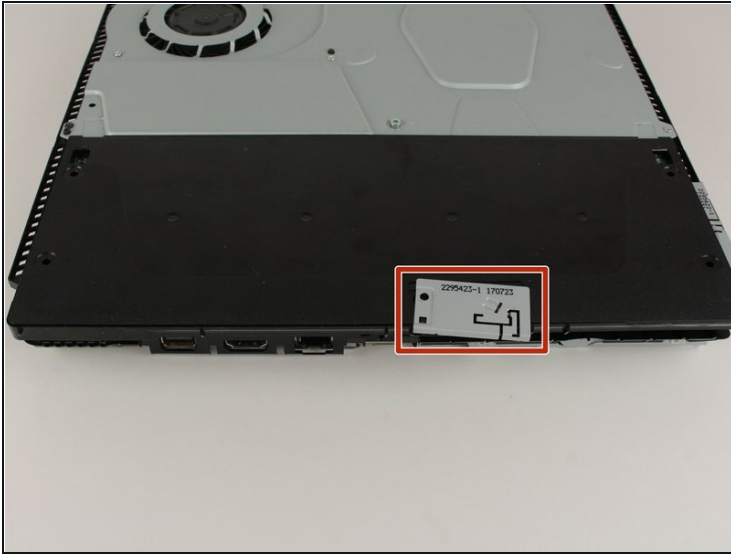
- Remove the four 16mm Philips screws holding the power supply in place.

Step 7



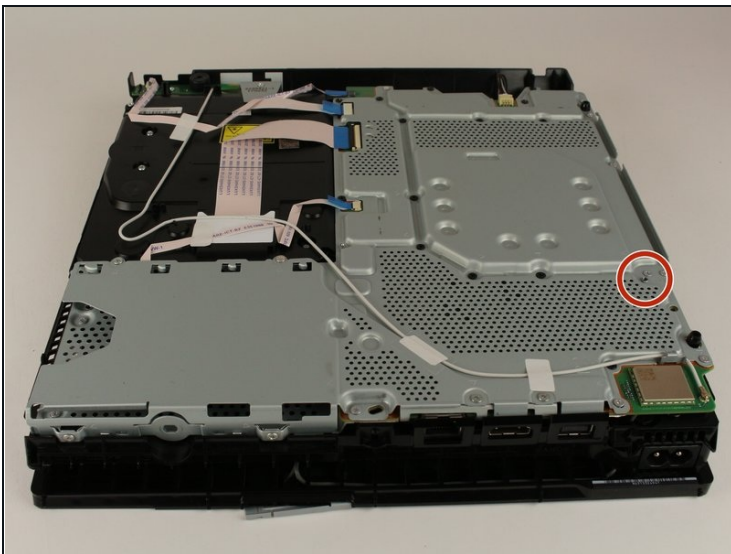
- Remove the metal sheet from the top of the power supply by grabbing and lifting up with your hands.

Step 8



- Remove the antenna from the top of the power supply by guiding the wire with your fingers through the grooves underneath the metal panel.

Step 9



- Flip the Playstation 4 Slim onto its back.
- Unscrew and remove the 4.0mm screw using a Phillips #1 screwdriver with a counter-clockwise motion.

Step 10



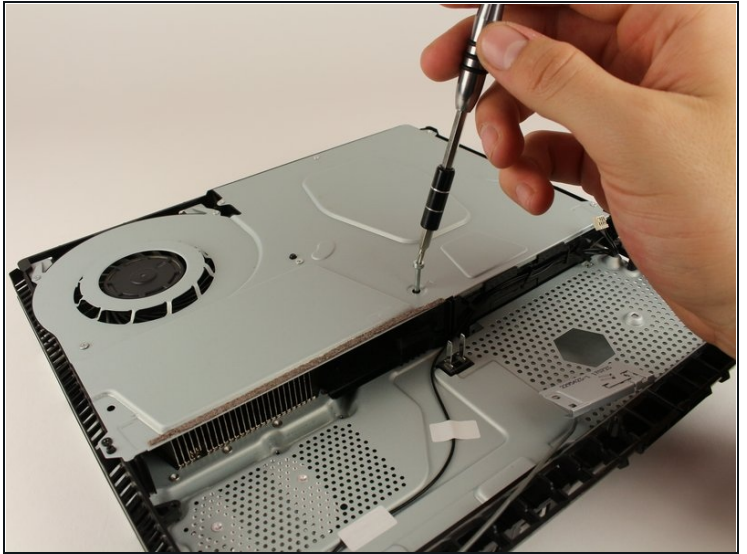
- Use a plastic opening tool to make space between the power supply and console by wedging and wiggling it in-between the two.
- Lift the power supply up and onto its back on the metal sheet using your hands.

Step 11



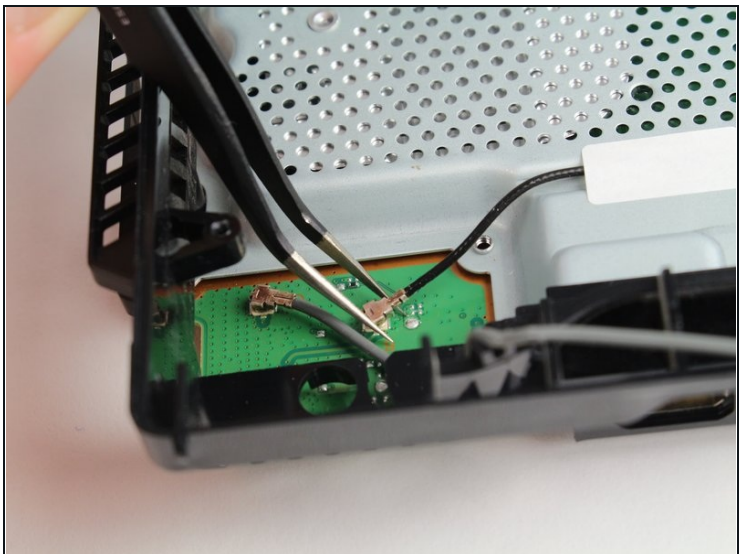
- Disconnect the wire connection from the power supply by firmly gripping it with your fingers or tweezers and pulling out.
- Remove the power supply completely by grabbing and lifting up with your hands.

Step 12 — Motherboard



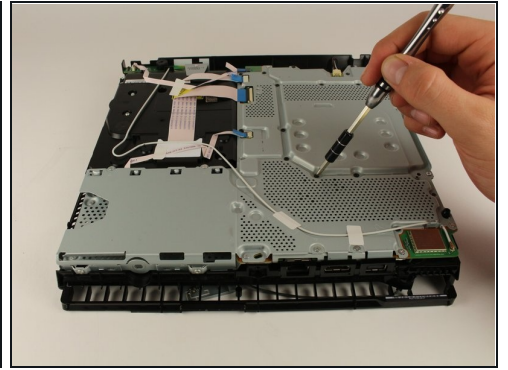
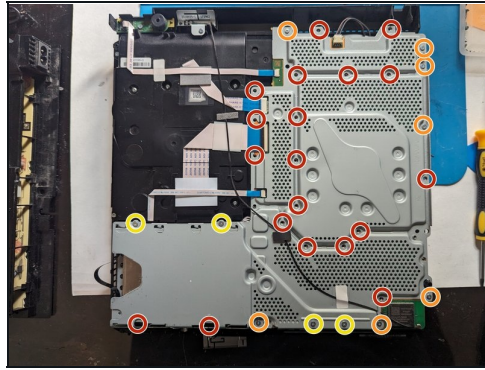
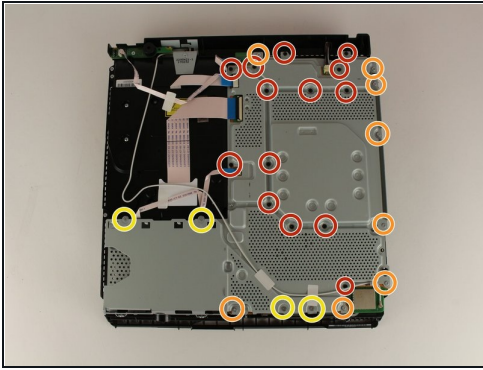
- Unscrew and remove the 31.0mm safety screw using a T8 screwdriver with a counter-clockwise motion.

Step 13



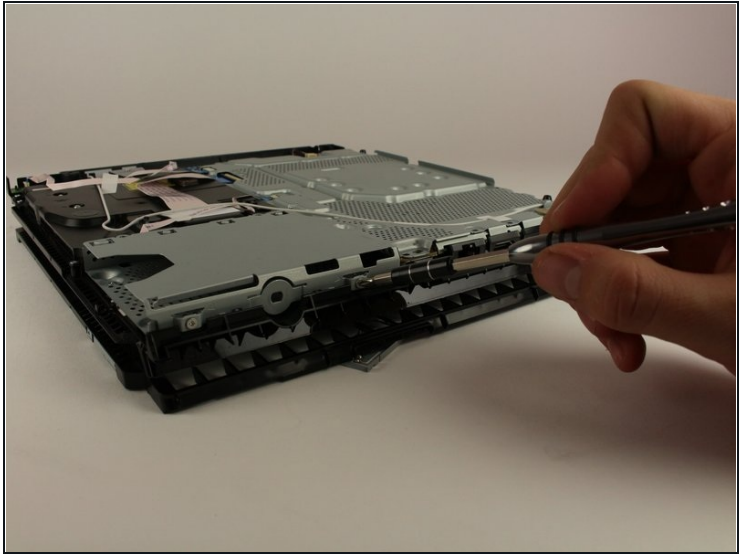
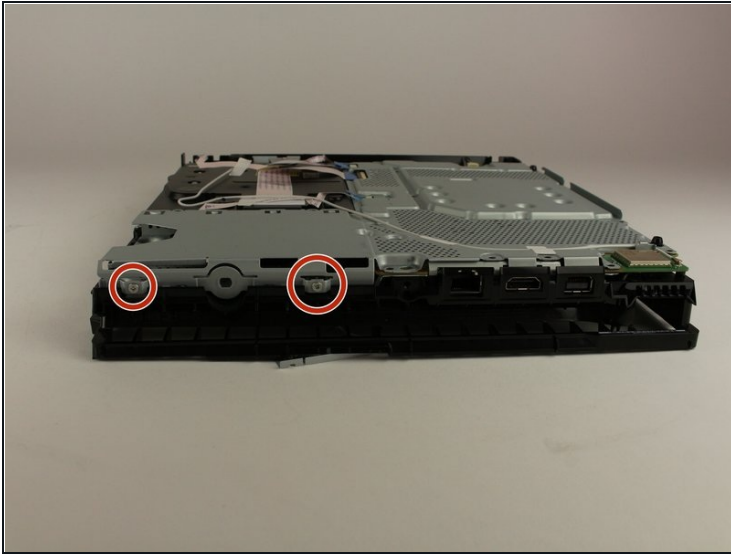
- Locate the two wires connected to the bottom of the motherboard.
- Remove the wires by firmly grasping the metal connections with your fingers or tweezers and pulling up until they disconnect.

Step 14



- Flip the device to the backside.
- Unscrew and remove 14x (19x for CUH-21xx) 4.0mm black screws using a Phillips #1 screwdriver with a counter-clockwise motion.
- Unscrew and remove 8x (7x for CUH-21xx) 6.0mm silver screws using a Phillips #1 screwdriver with a counter-clockwise motion.
- Unscrew and remove 4x 3.0mm silver screws using a Phillips #1 screwdriver with a counter-clockwise motion.

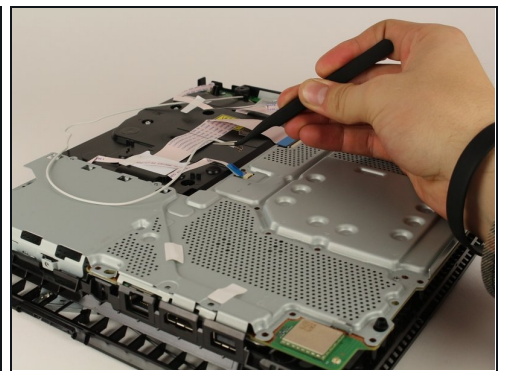
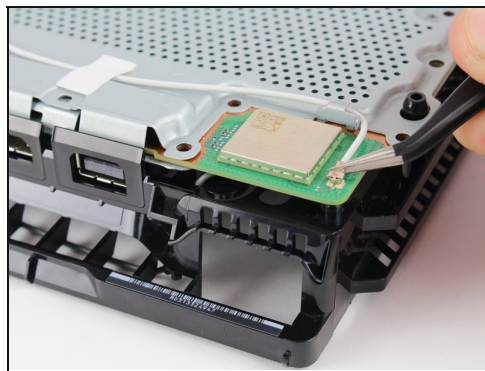
Step 15



- Unscrew and remove the two 5.0mm screws on the side of the console using a Phillips #1 screwdriver with a counter-clockwise motion.

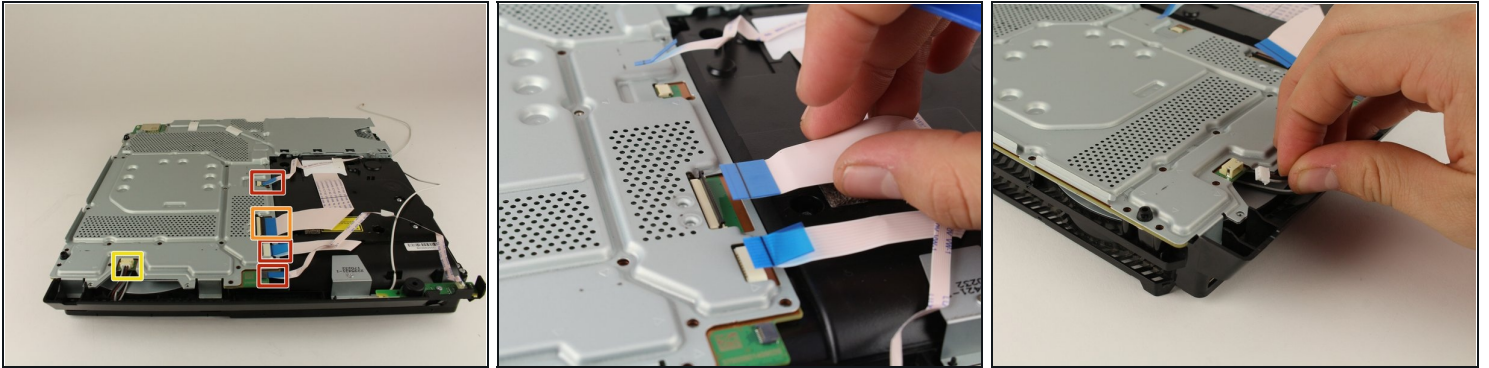
⚠ Skip this step for the CUH-21xx, as those screws were removed in the previous step.

Step 16



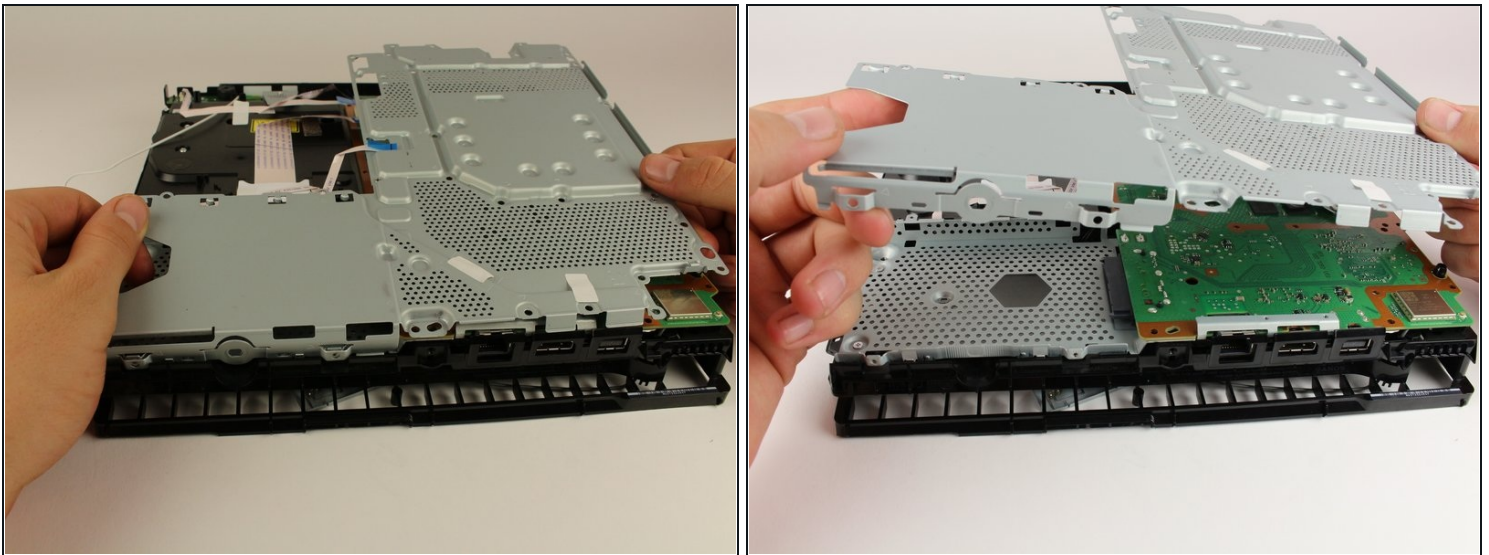
- Locate the white wire connected to the corner of the top of the motherboard.
- Disconnect the wire by firmly grasping the metal connection with your fingers or tweezers and pulling up until it detaches.
- Unthread the wire from the tape and move it off to the side using tweezers or your fingers.

Step 17



- Remove the connections by pulling out on the blue tabs with your fingers.
- Flip up the black clip on the largest tab with your finger before removing it.
- Remove this wire connection by firmly gripping the wire with your fingers and pulling it out.

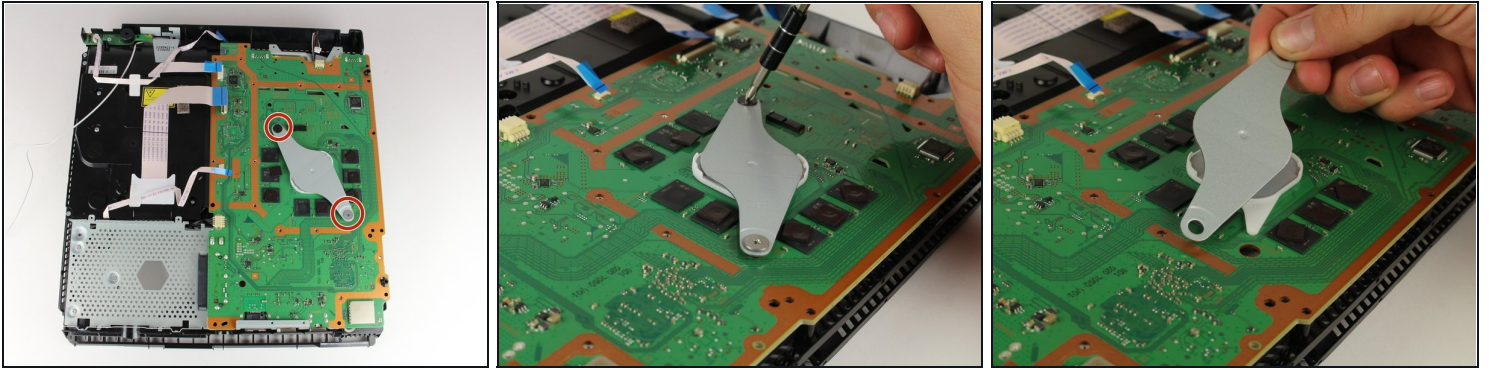
Step 18



- Remove the metal plate by grabbing two sides of the plate and lifting up and away from yourself.
- ① You may need to wiggle the plate a bit to get it loose before you lift it out.

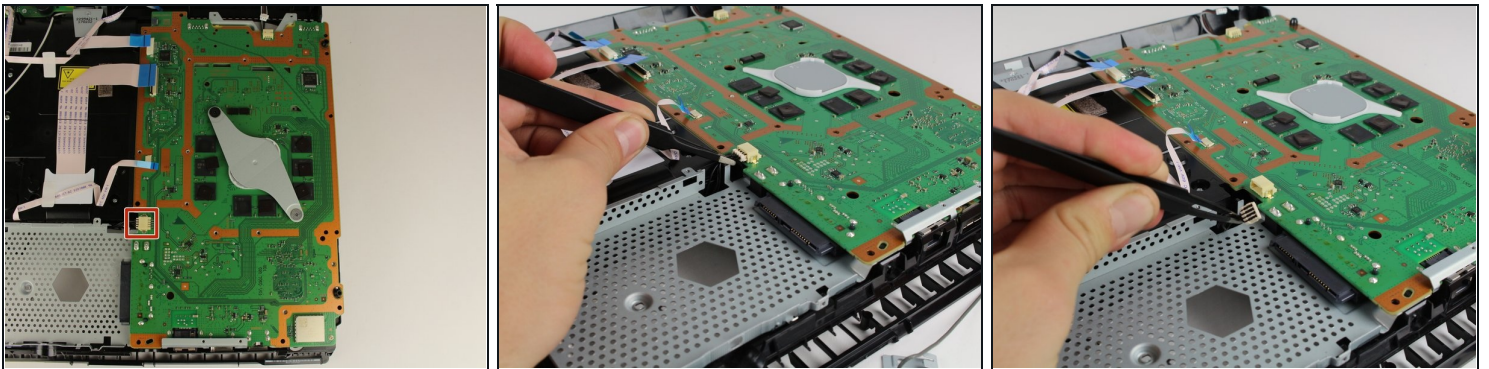
⚠ Do not lose any of the black pads attached to the motherboard while performing this step.

Step 19



- Unscrew and remove the two 10.0mm screws (one silver and one black) using a Phillips #1 screwdriver with a counter-clockwise motion.
- Remove the small metal plate by grabbing it with your fingers and lifting up.

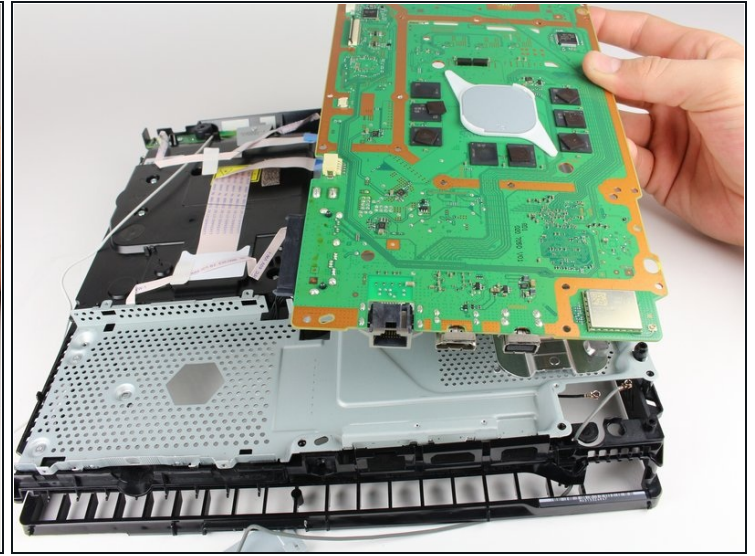
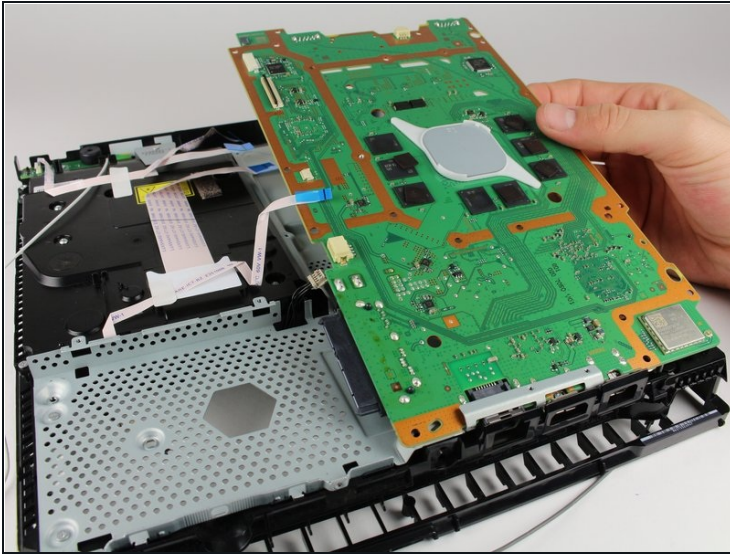
Step 20



- Remove this wire connection by firmly grasping it with tweezers and pulling out.

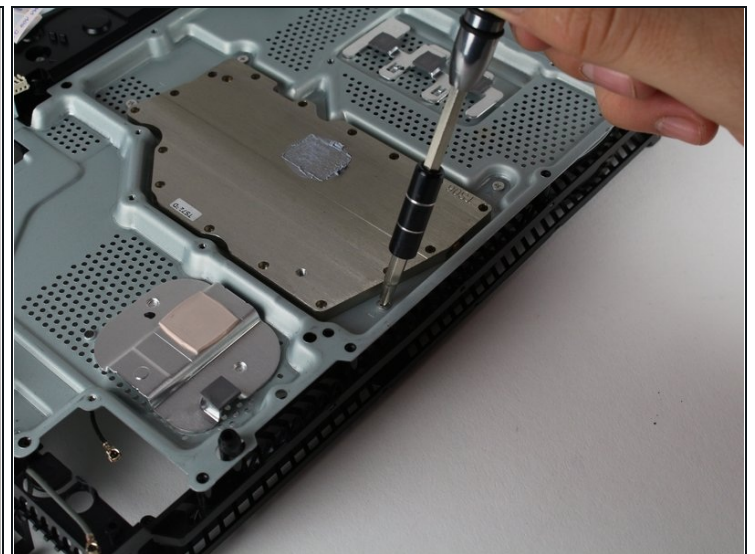
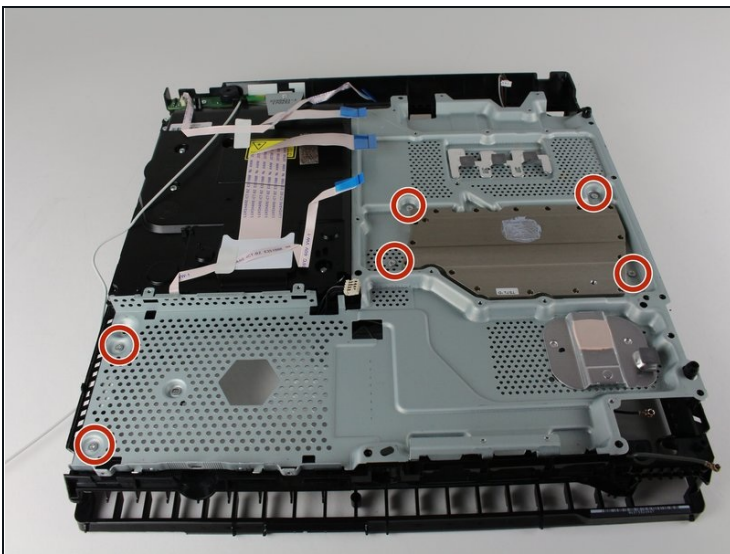
⚠ This might require a bit of force to disconnect, but be sure not to break any of the wires.

Step 21



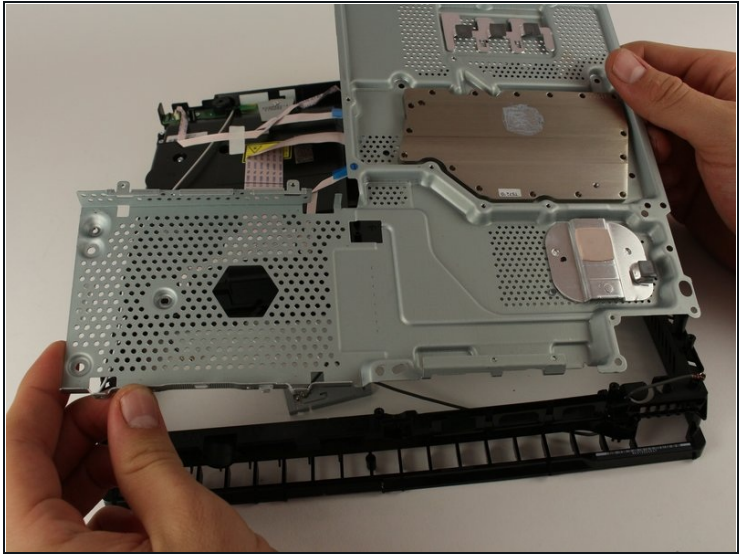
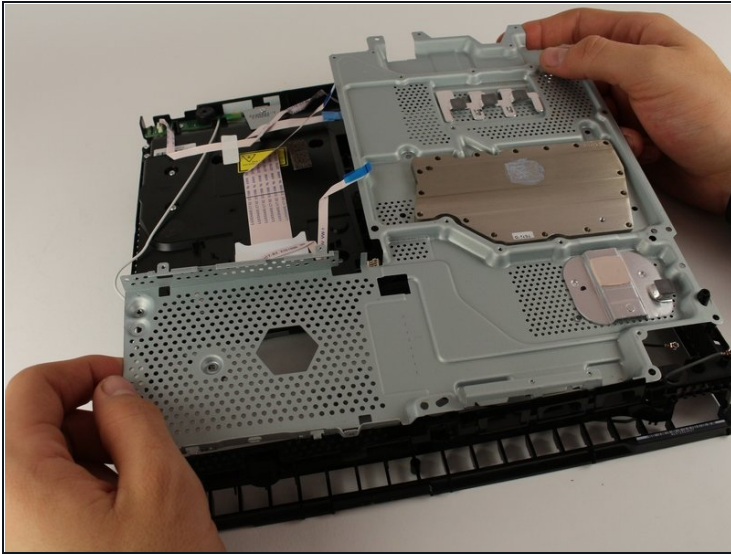
- Remove the motherboard by grabbing the edge of the board with one or two hands and pulling away and up.
- ① You may need to wiggle the board a bit to get it loose before you remove it.

Step 22 — Fan System



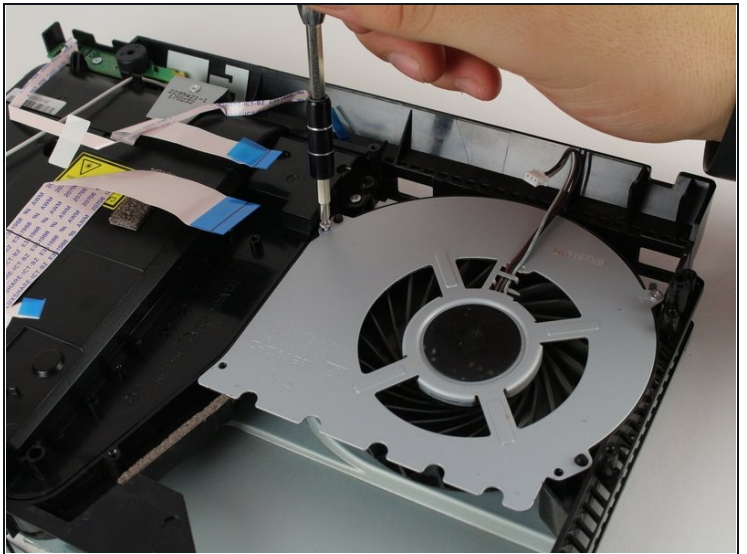
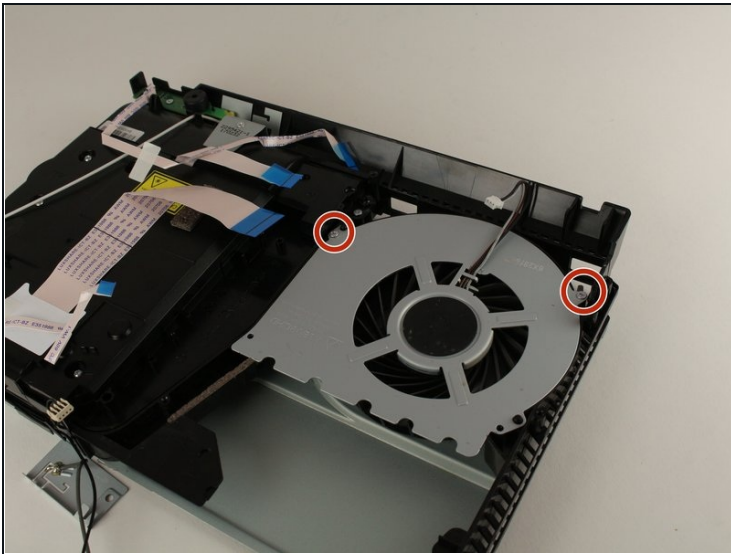
- Unscrew and remove the six 4.0mm screws using a PH00 screwdriver with a counter-clockwise motion.

Step 23



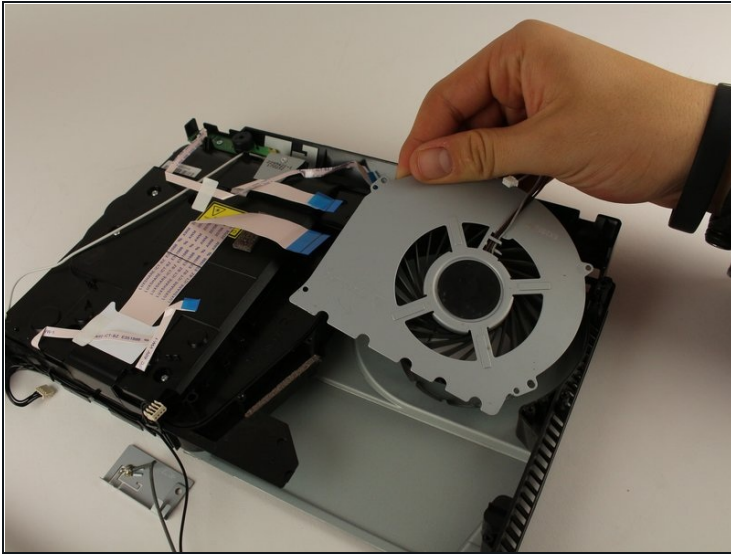
- Remove the metal plate by grabbing the edges and lifting up with your hands.

Step 24



- Unscrew and remove the two 40 mm screws using a PH00 screwdriver with a counter-clockwise motion.

Step 25



- Remove the fan system by grabbing the edge of the top metal plate and lifting up with your hands.

To reassemble your device, follow these instructions in reverse order.