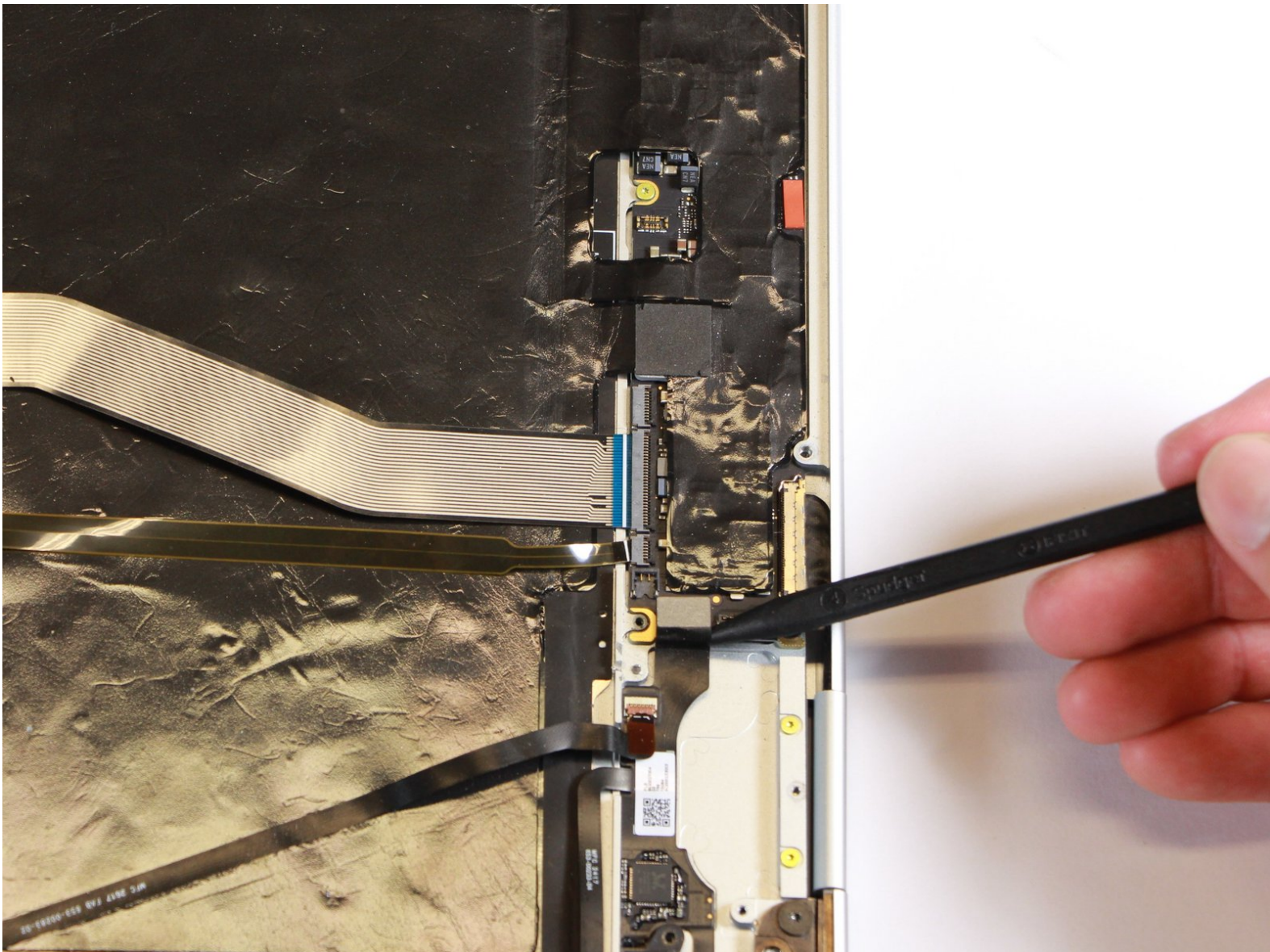




Google Pixelbook Motherboard Replacement

How to replace a Google Pixelbook motherboard.

Written By: Logan Lawson



INTRODUCTION

In this guide, you will learn how to remove the motherboard of the Google Pixelbook in order to fix a faulty motherboard, ram, storage, and or processor.

TOOLS:

- [iFixit Opening Tools](#) (1)
- [Metal Spudger \(optional\)](#) (1)
- [T5 Torx Screwdriver](#) (1)
- [Spudger](#) (1)
- [T3 Torx Screwdriver](#) (1)
- [Tweezers](#) (1)

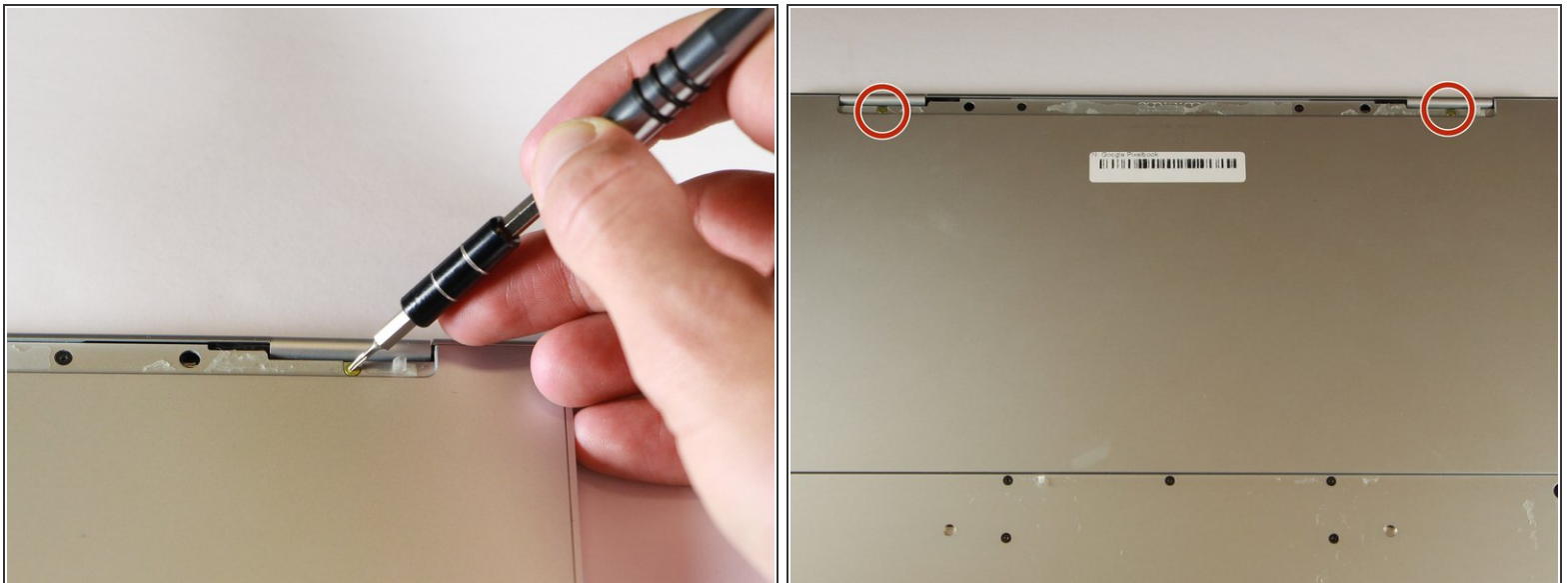
Needle-Nose

Step 1 — Battery (Back Panel)



- Use the iFixit opening tools or a metal spudger to pry the rubber covers off the back of your Pixelbook.
- Peel the linings off completely until the back of the Pixelbook looks bare.

Step 2



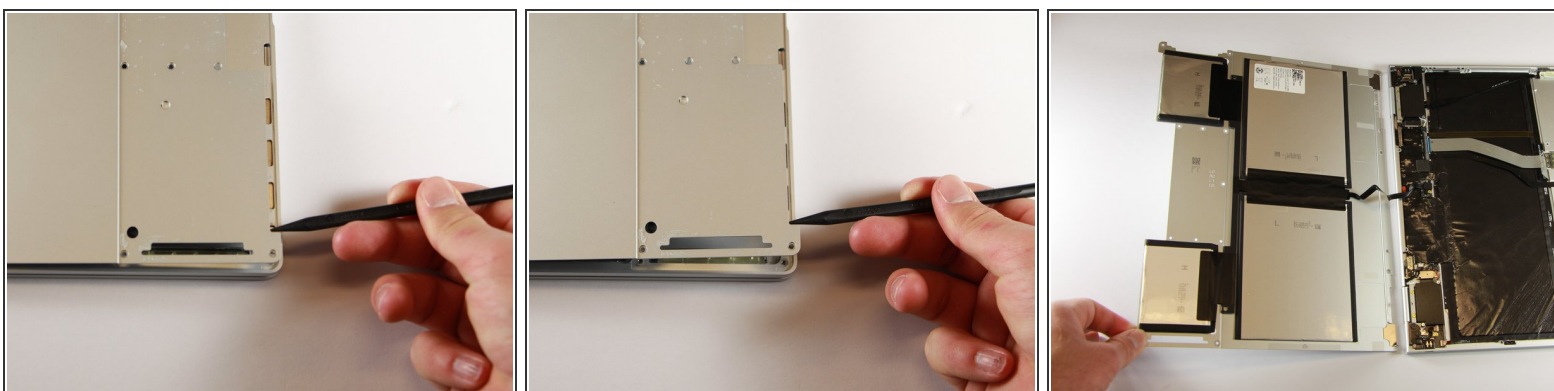
- Remove the two yellow 2.0mm screws by using a T3 Torx screwdriver.

Step 3



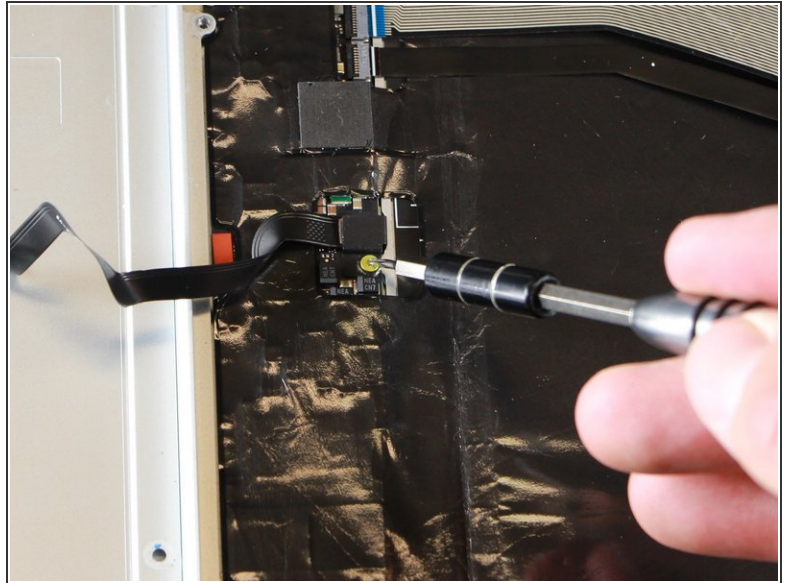
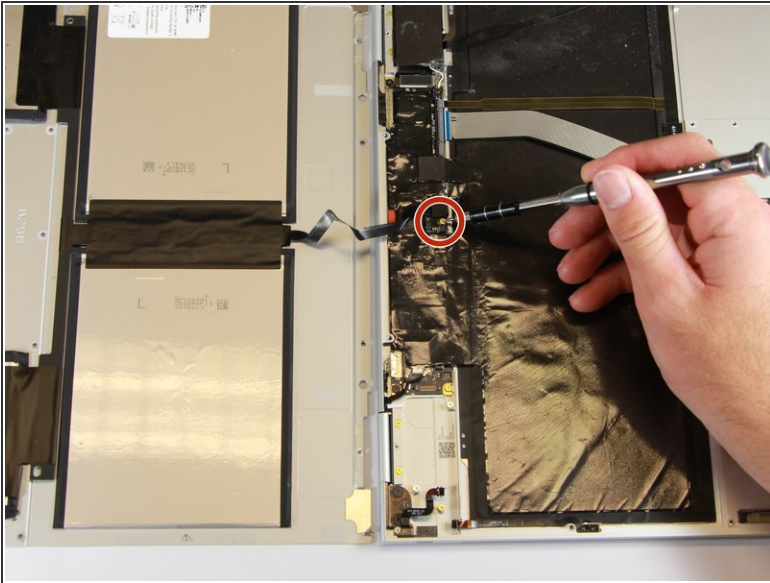
- Remove the seventeen 3.0mm T5 Torx screws from the bottom panel.

Step 4



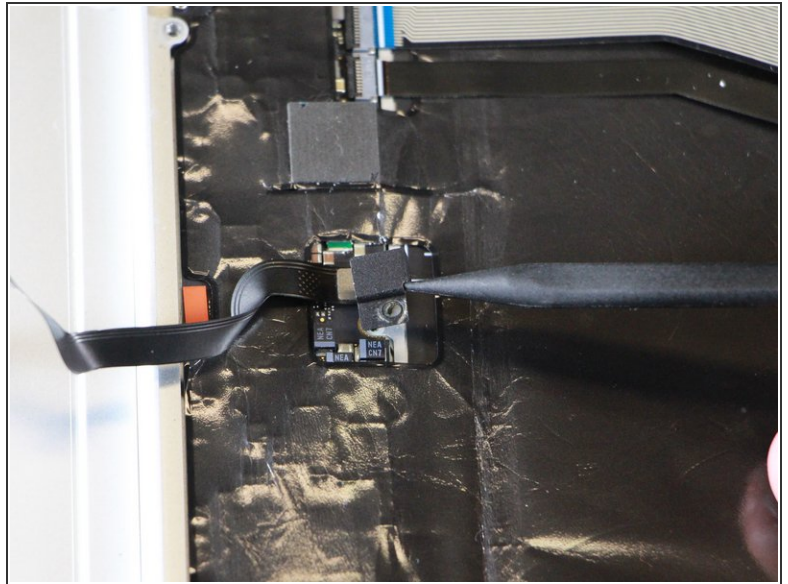
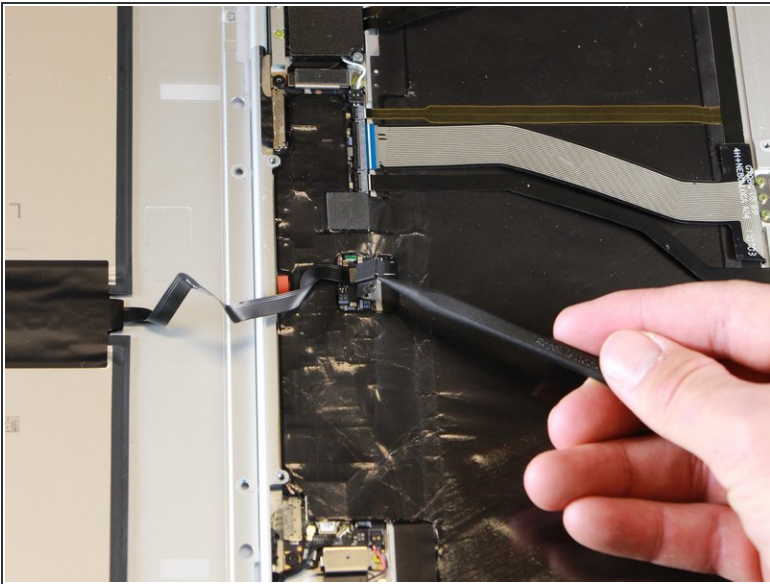
- Use the nylon spudger to pry the edge of the Pixelbook up until you can grab the edge with your fingers.
- Open the back panel completely and lay it flat so you see the whole inside of the computer.

Step 5



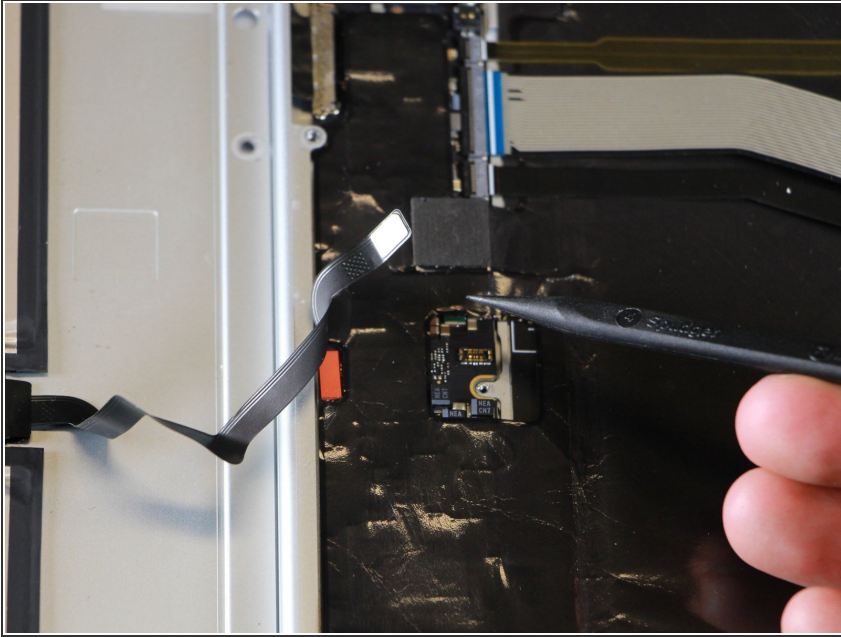
- Remove the yellow 2.0mm screw from the middle of the panel by using the T3 Torx screwdriver to turn the screw counterclockwise.

Step 6



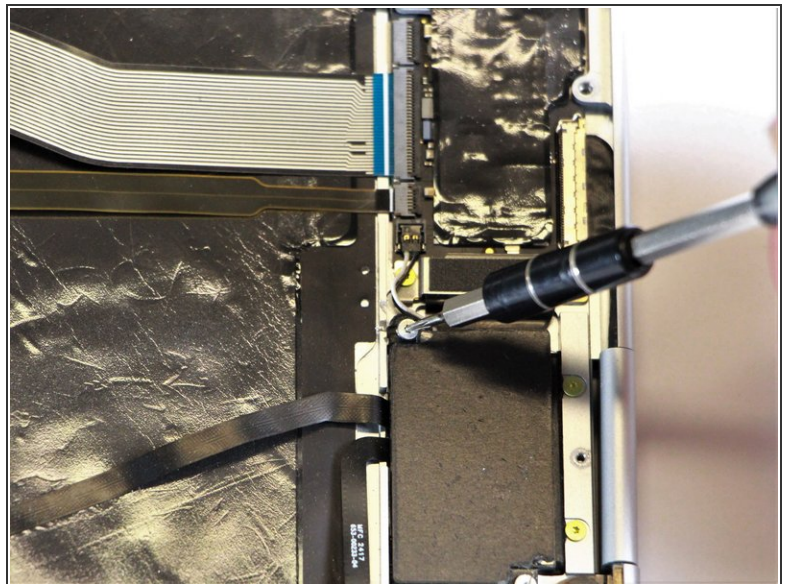
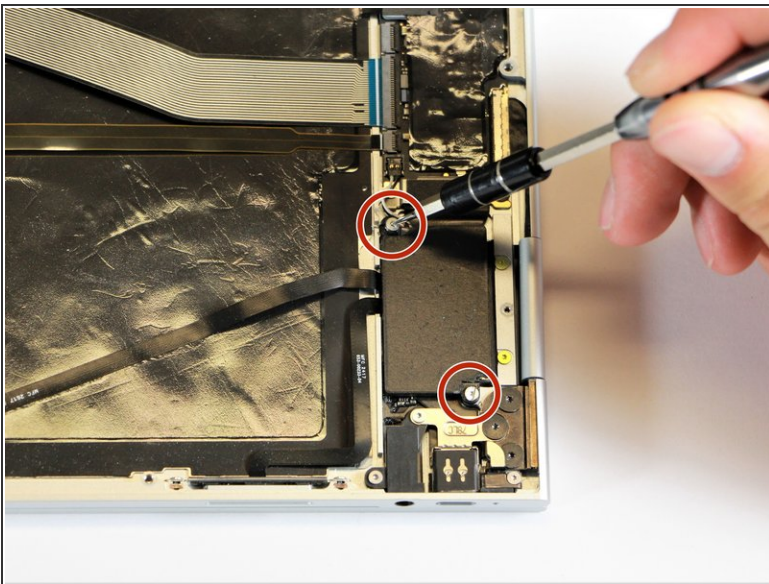
- Remove the small, black casing by using the spudger to lift it up from its place.

Step 7



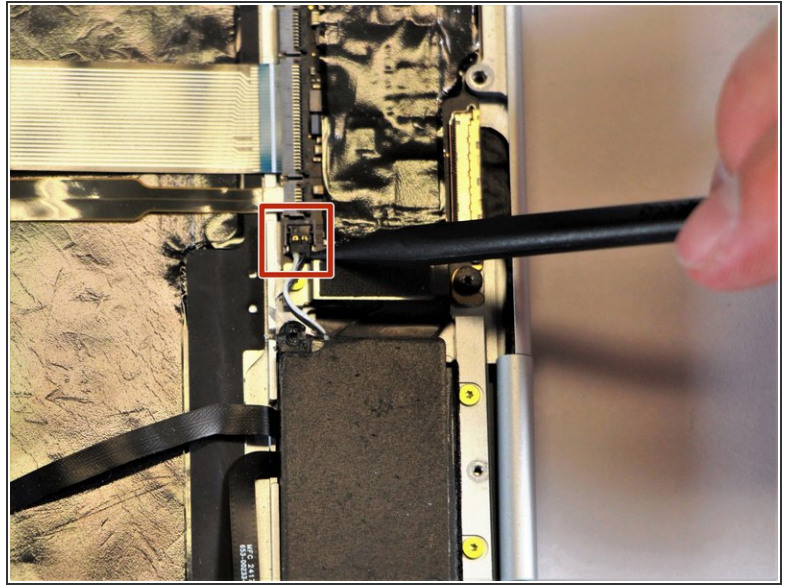
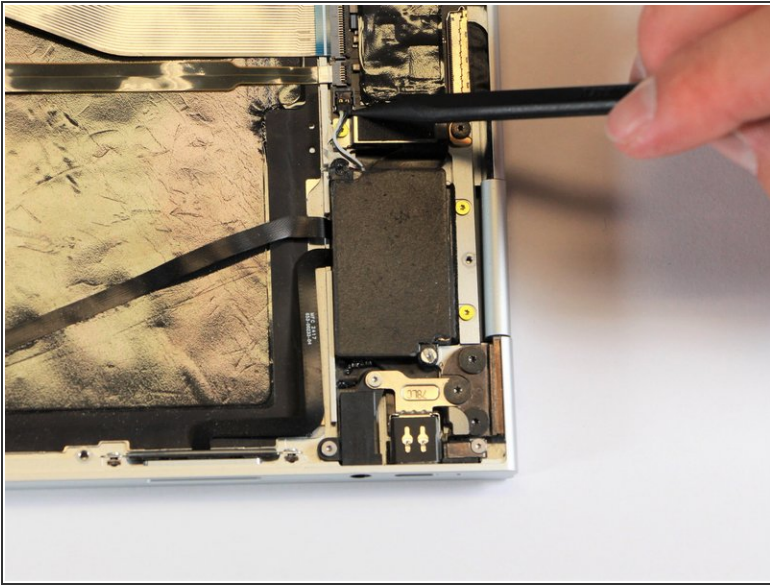
- Disconnect the flat, black cord from the main component by using a spudger to push it out of the slot, or by using your hand to carefully pull it out.
- Your back panel is now free from the main component.

Step 8 — Left Charging Port



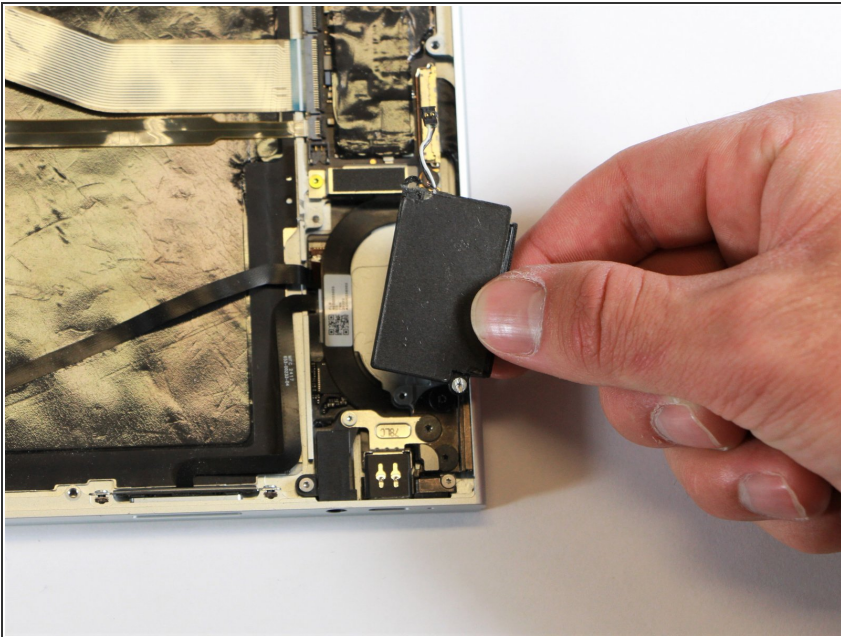
- Remove the two 3.0mm silver screws from the thin, black component by using a T3 Torx screwdriver to turn the screws counterclockwise.

Step 9



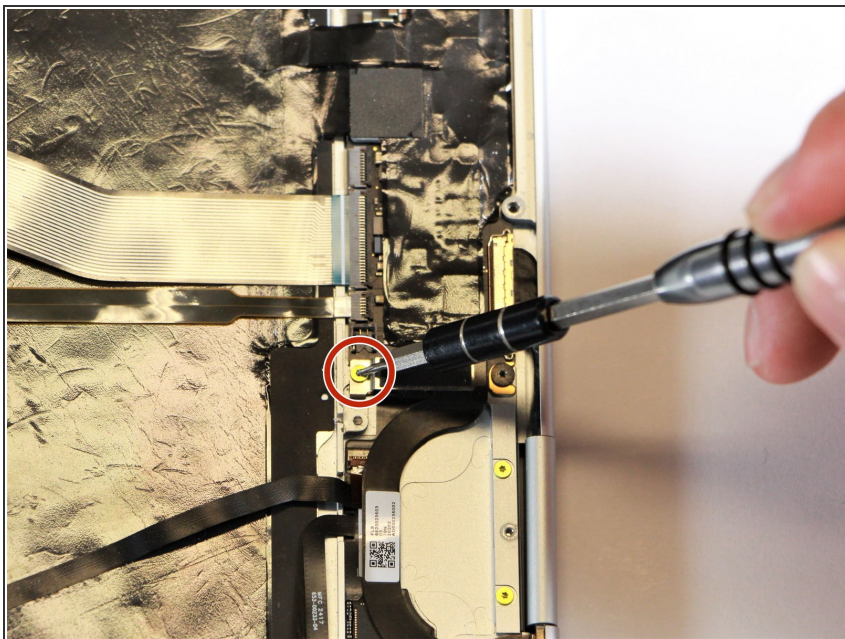
- Disconnect the thin, black and white cord from the motherboard by using the spudger to snap the connector up and out of place.

Step 10



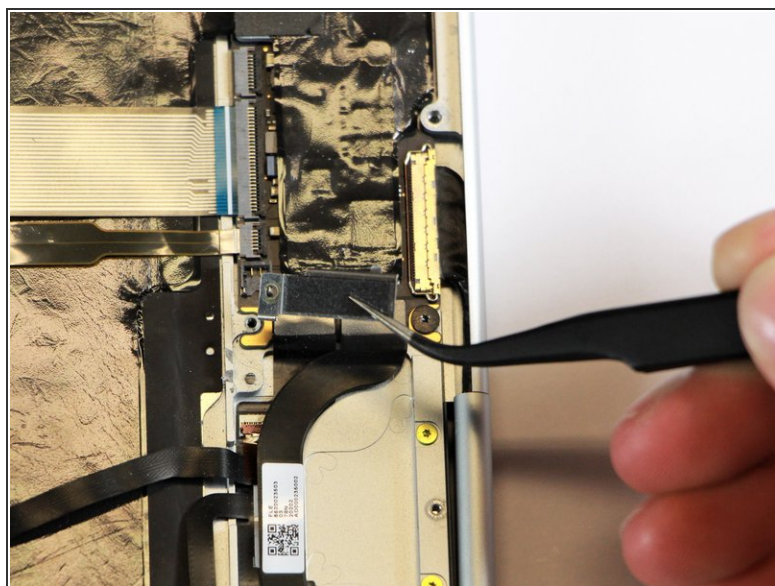
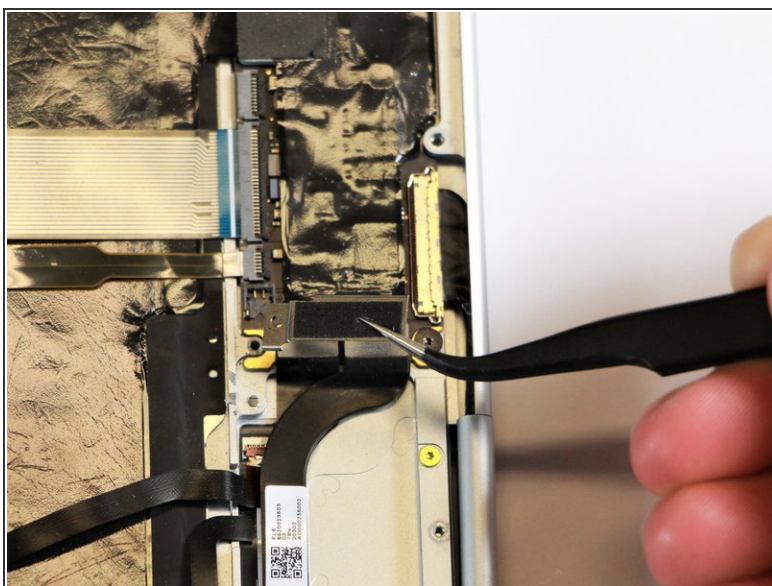
- Remove the thin, black component by pulling it up and out of the laptop with your fingers.
- ⓘ This photo shows the bottom screw still in the black box, but yours should be removed.

Step 11



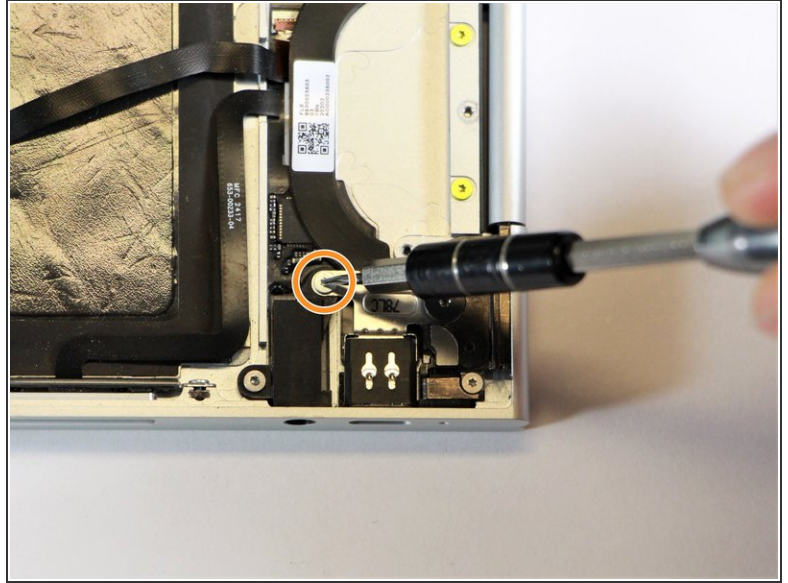
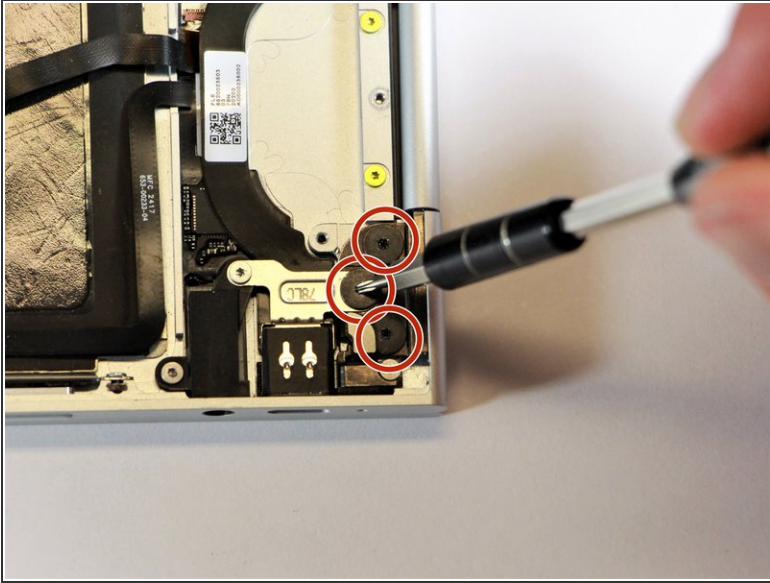
- Remove the gold 2.0mm corner screw by turning it counterclockwise with a T3 Torx screwdriver.

Step 12



- Using needle-nose tweezers, remove the silver casing by lifting it up and out of the computer.

Step 13



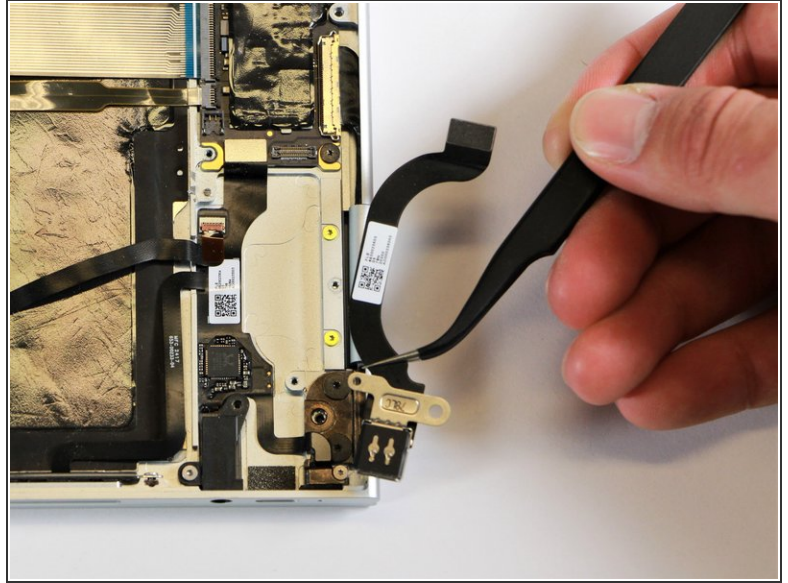
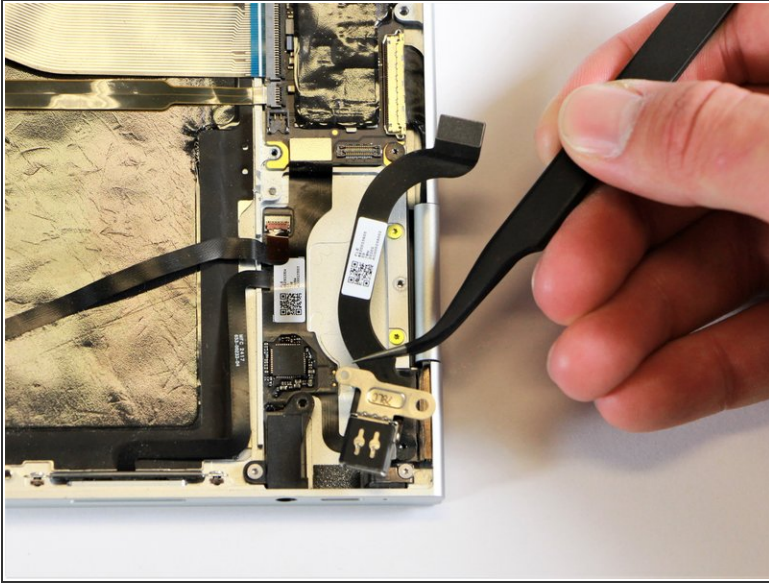
- Remove the three 3.0mm black screws on the right side by using a T5 Torx screwdriver to turn the screws counterclockwise.
- Remove the silver 2.0mm screw on the left side by using a T3 Torx screwdriver to turn the screw counterclockwise.

Step 14



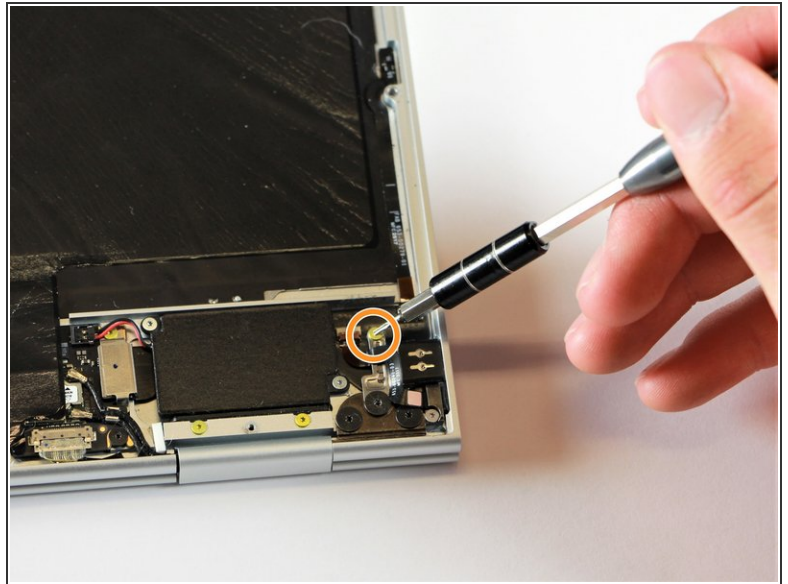
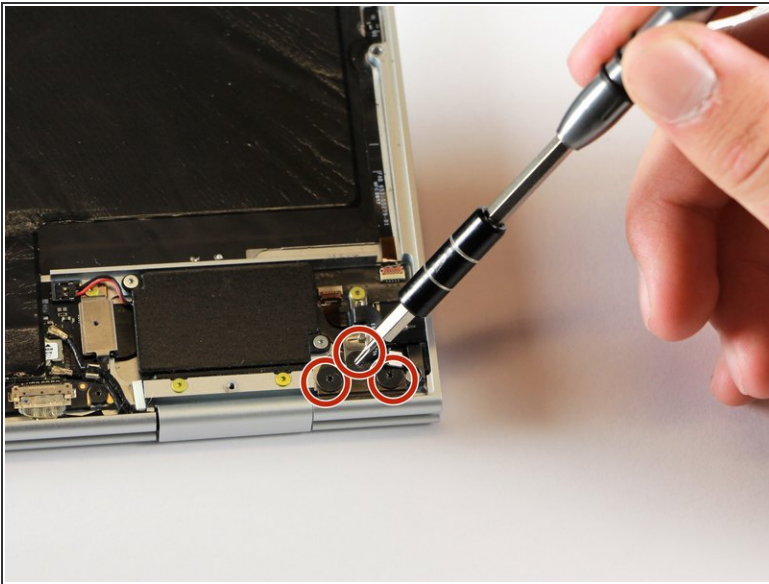
- Disconnect the thin, black ribbon cable by using the spudger to lift it up from the computer.

Step 15



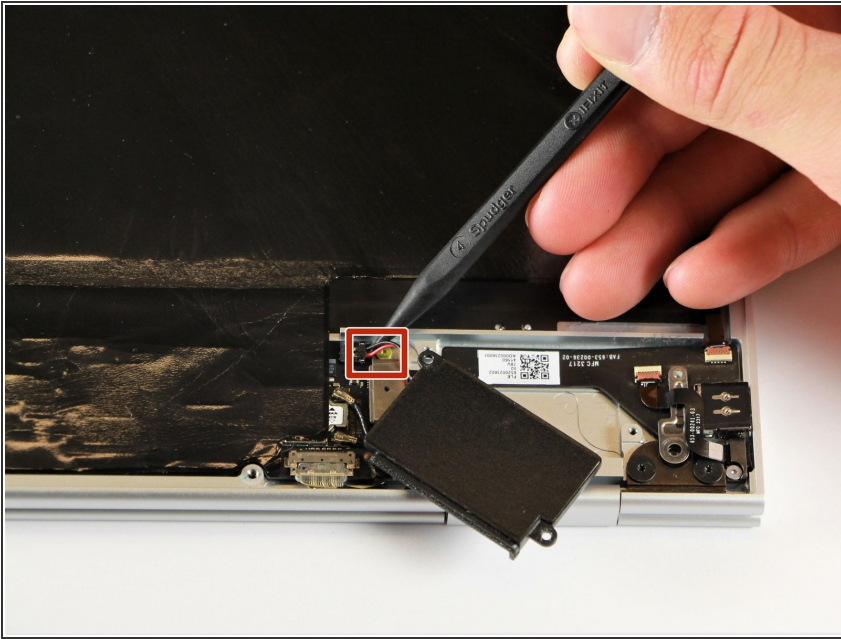
- Use the needle-nose tweezers to remove the charging port by lifting the component up and out of the Pixelbook.

Step 16 — Right Charging Port



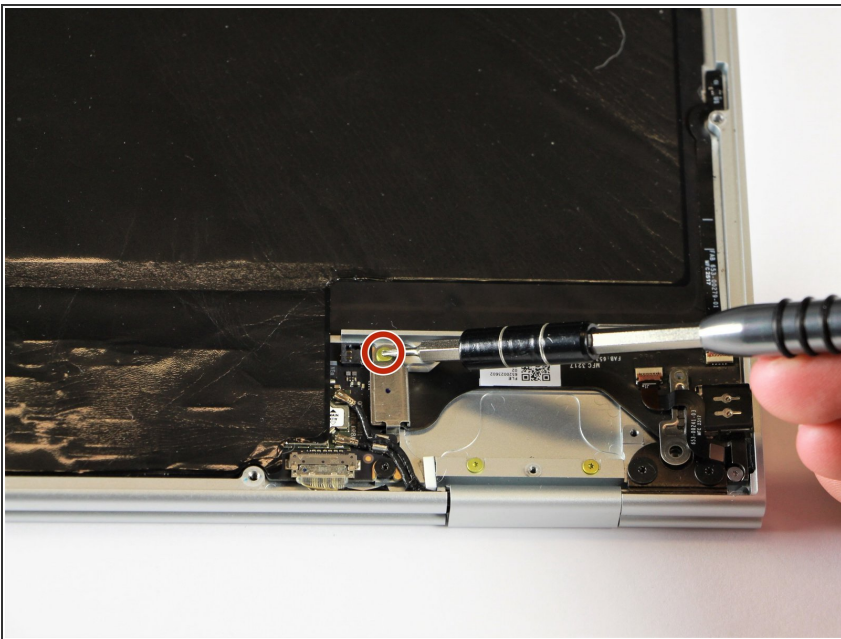
- Remove the three 2.0mm black screws from the sound card by using a T5 Torx screwdriver to turn them counterclockwise.
- Remove the gold 3.0mm screw by using a T3 Torx screwdriver to turn it counterclockwise.

Step 17



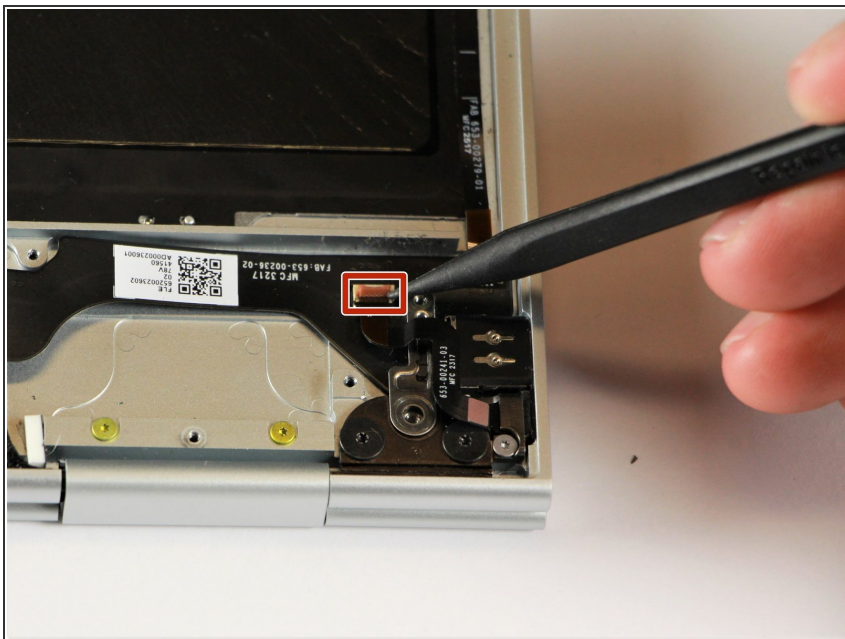
- Disconnect the thin, black and red cord from the motherboard by using the spudger to snap the connector up and out of place.

Step 18



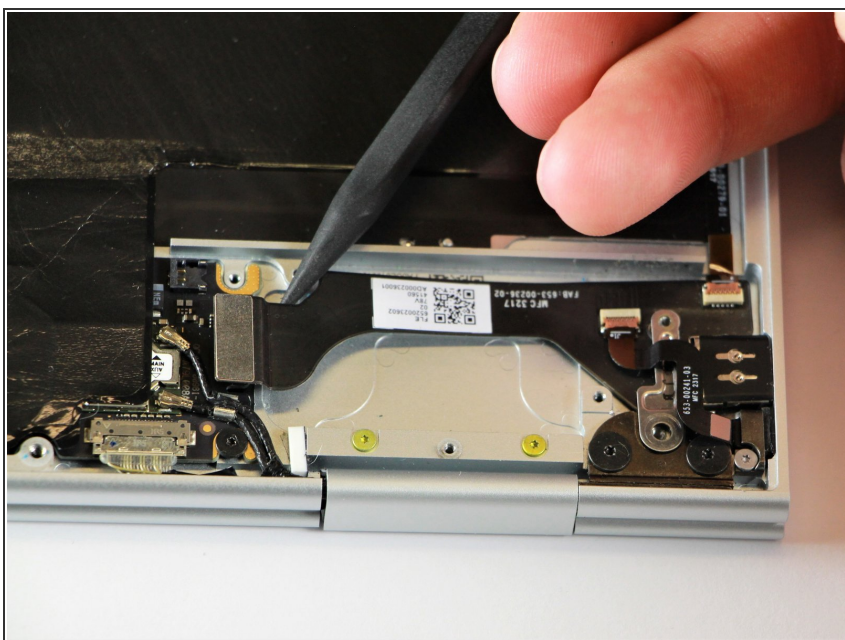
- Remove the yellow 2.0mm screw by using the T3 Torx screwdriver to turn the screw counterclockwise.

Step 19



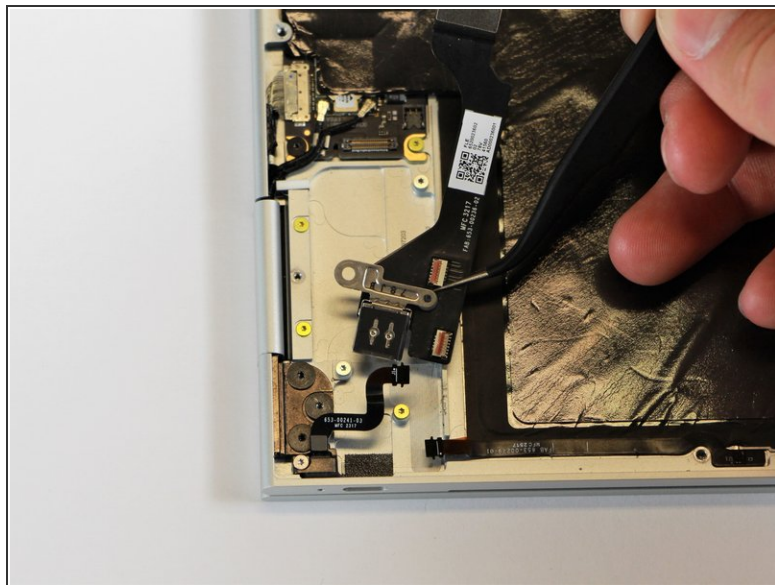
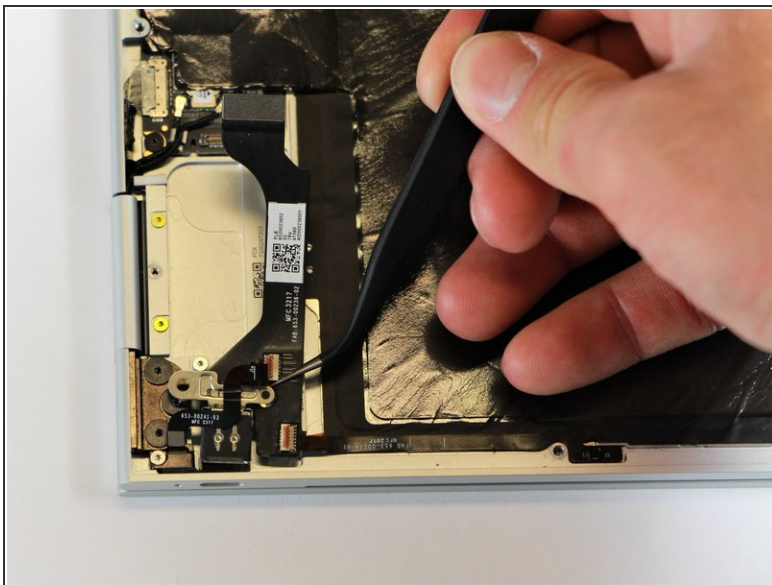
- Remove the small, red component by lifting it up with the spudger.

Step 20



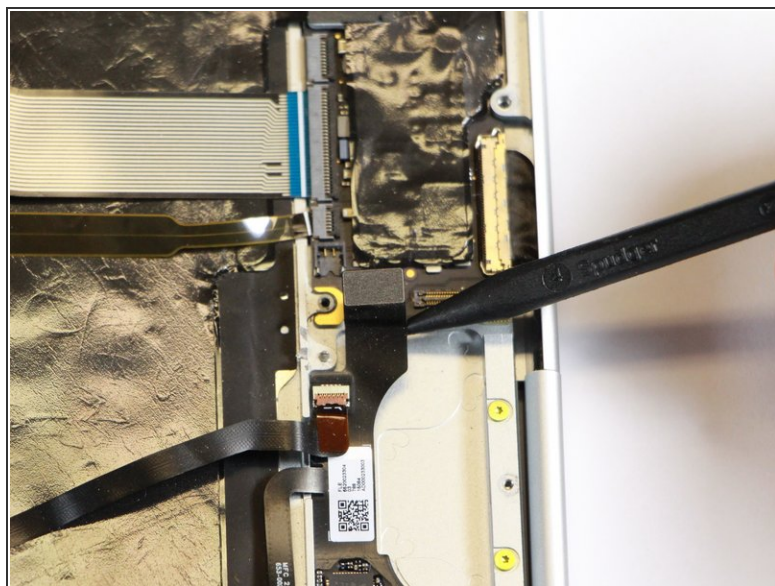
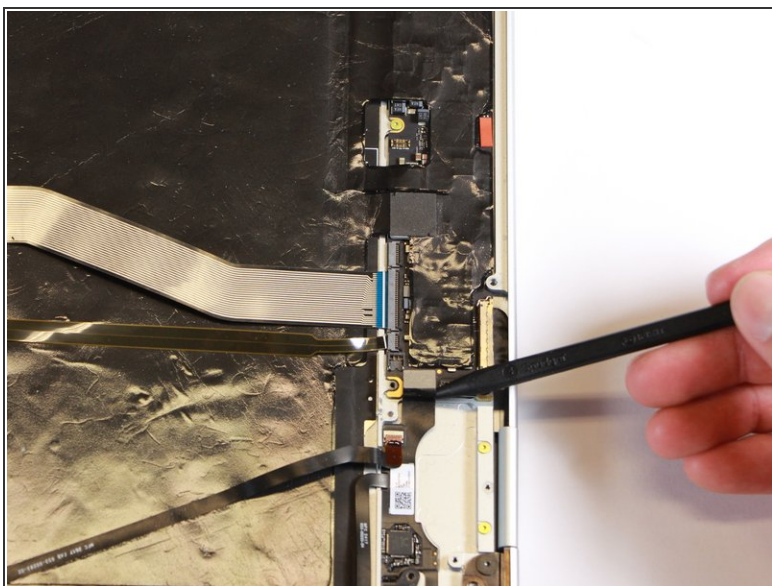
- Disconnect the metal component of the thin, black component by lifting it up with the spudger.

Step 21



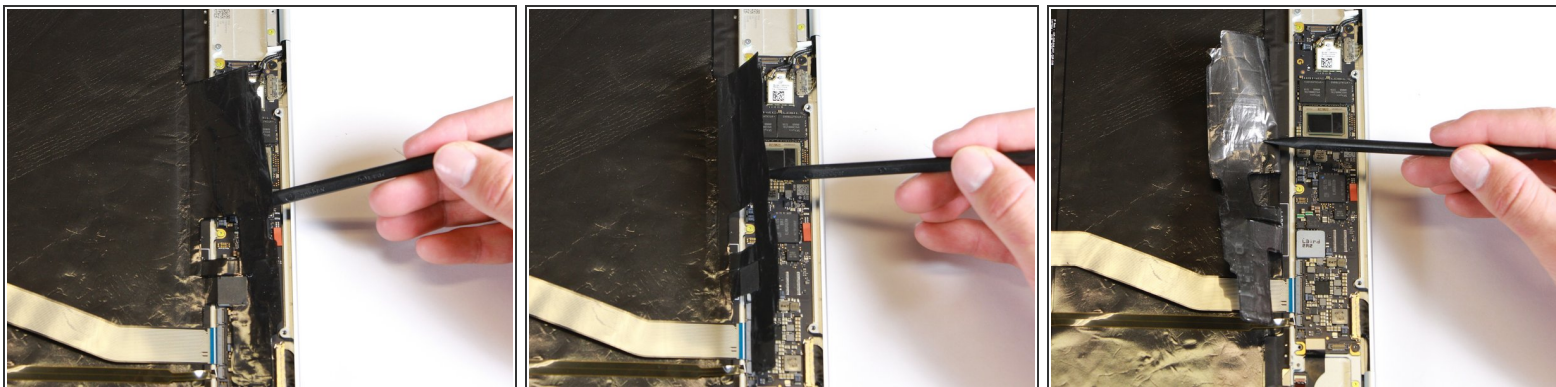
- Remove the right charging port by picking it up with the tweezers and lifting it from the computer.

Step 22 — Motherboard



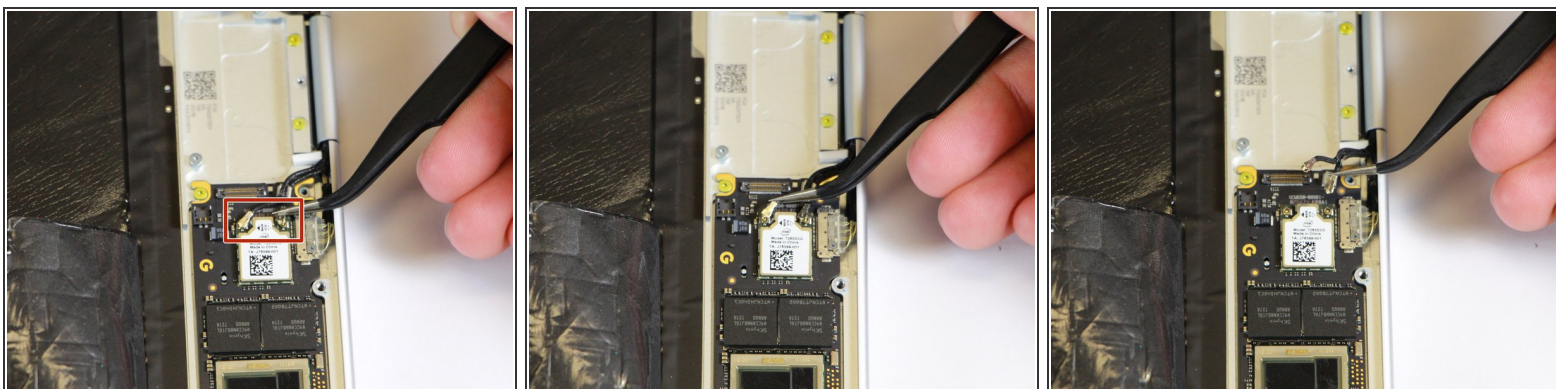
- Disconnect the flat, black cord from the motherboard by using a spudger to push it upwards out of the slot, or by using your hand to carefully pull upward.

Step 23



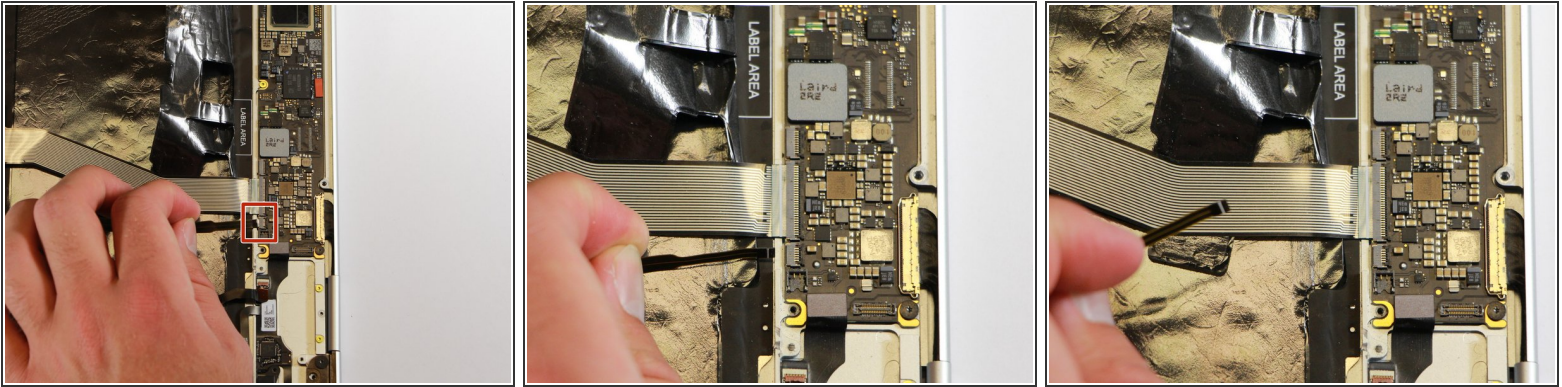
- Fold back the plastic covering on the motherboard using the nylon spudger.

Step 24



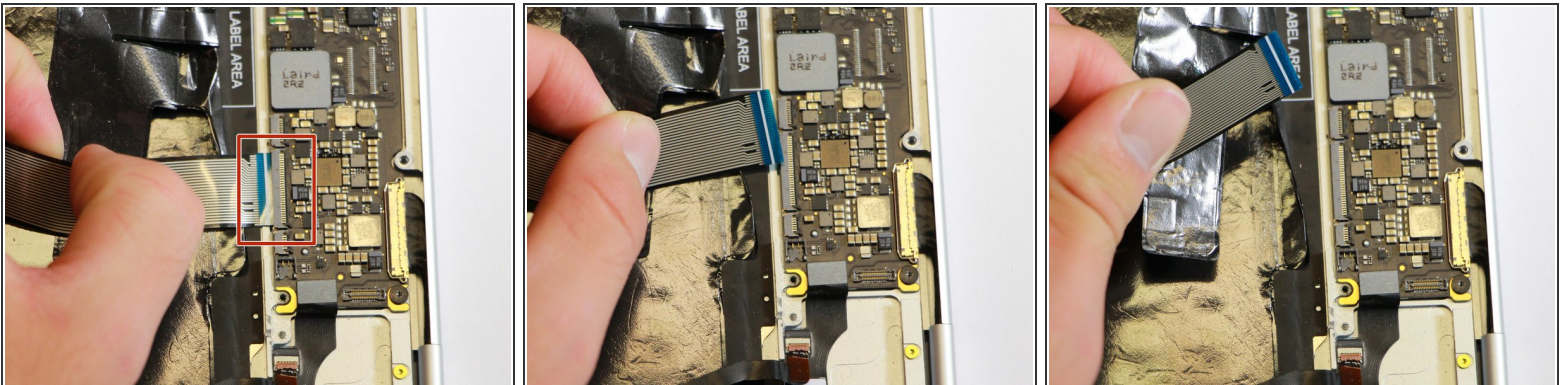
- Disconnect the two black cables from the motherboard by pulling the connectors upward using the needle-nose tweezers.

Step 25



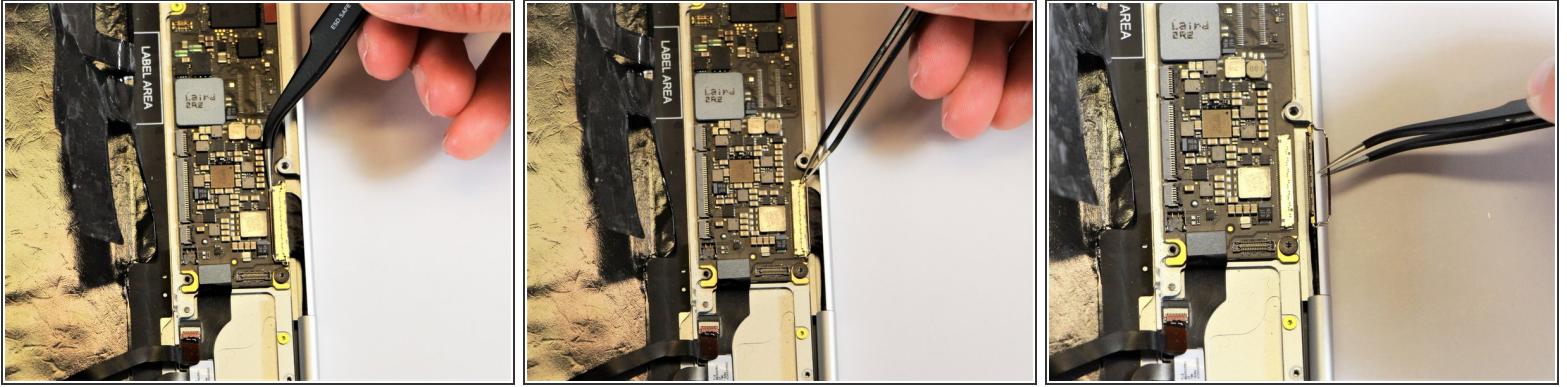
- Disconnect the flat ribbon cable from the motherboard by using your hand to gently pull it out of the socket, or by using a pair of tweezers to pull it out.

Step 26



- Disconnect the large flat ribbon cable from the motherboard by using your hand to gently pull it out of the socket, or by using a pair of tweezers to pull it out.

Step 27



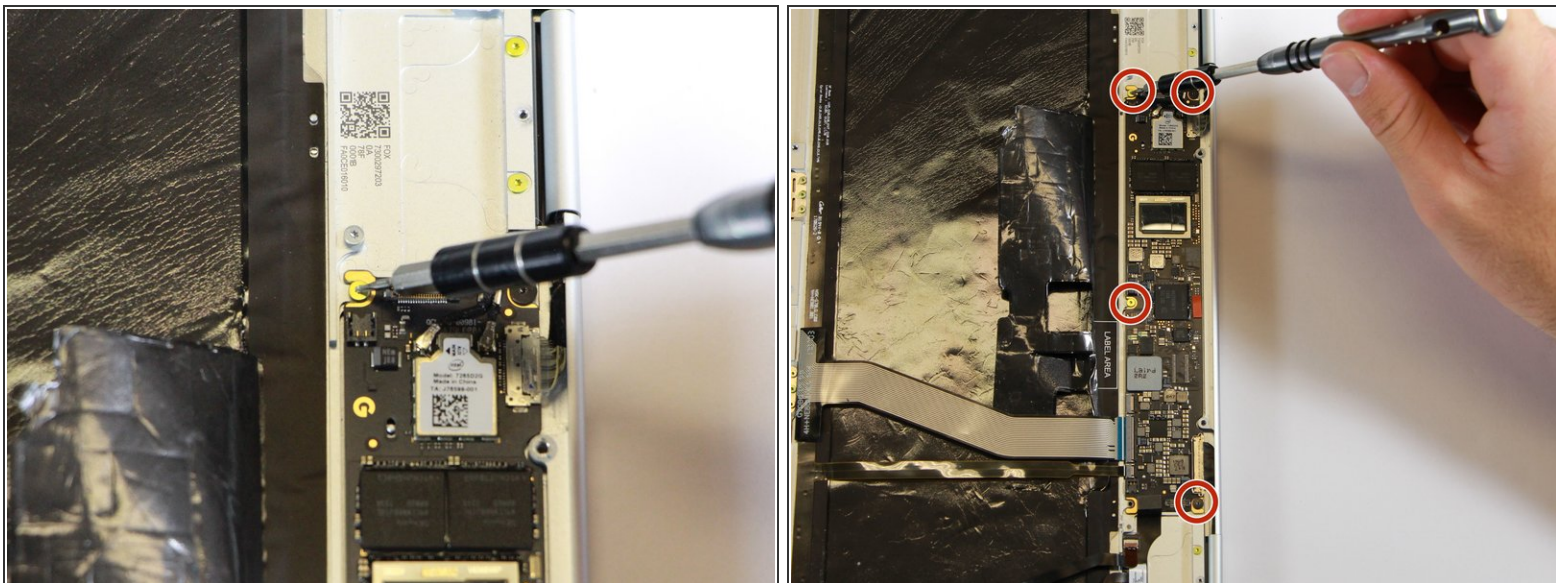
- Raise the retaining latch of the motherboard connector by using the needle-nose tweezers.
- Disconnect the large flat cable from the motherboard by gently pulling on the latch using the needle-nose tweezers.

Step 28



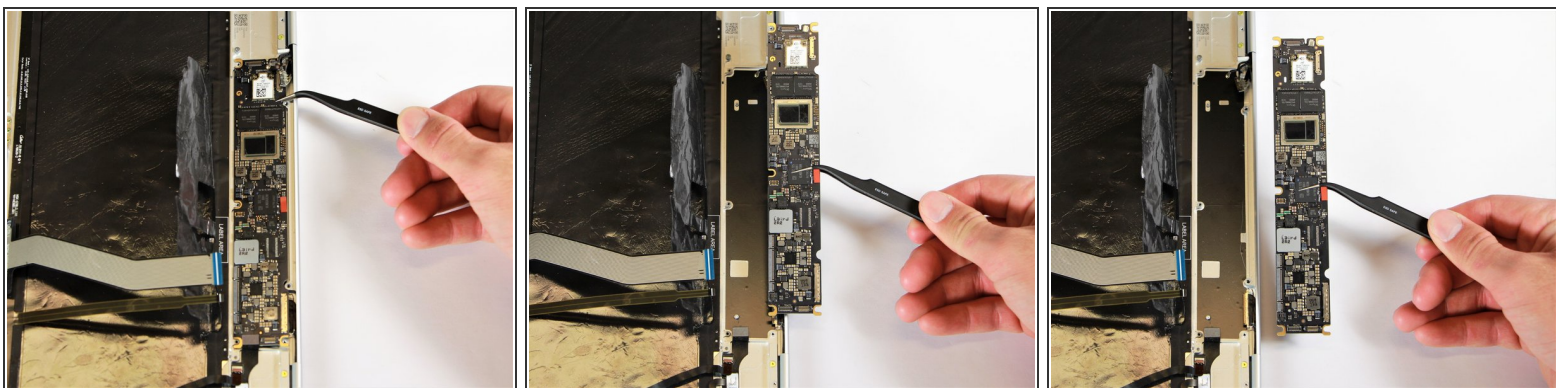
- Disconnect the flat cable from the motherboard by using the needle-nose tweezers to gently pull the connector out of the slot.

Step 29



- Remove the gold 3.0mm screws and the black, flat 2.0mm screws from the motherboard by using a T3 Torx screwdriver to turn the screws counterclockwise.

Step 30



- Remove the motherboard by gently lifting it out of the laptop using the needle-nose tweezers.

To reassemble your device, follow these instructions in reverse order.