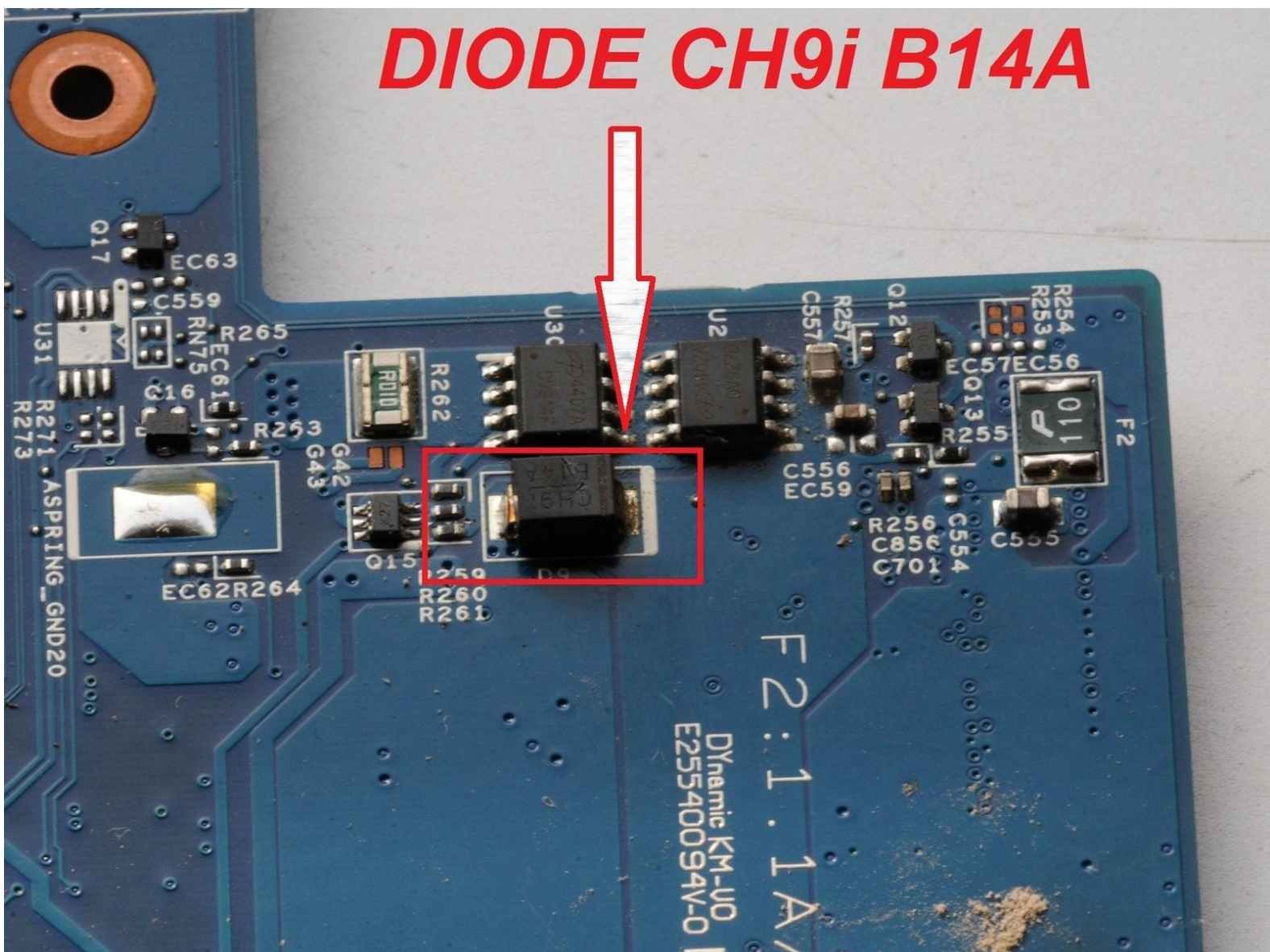




# Acer Aspire 5738Z Diode CH9i B14A Replacement

In this video, we will show How To Fix Laptop That Won't Turn On by Remove a diode CH9i B14A from mother card

Written By: AMOUR nasreddine



---

## INTRODUCTION

[video: <https://www.youtube.com/watch?v=YdNstA9fF2Y>]

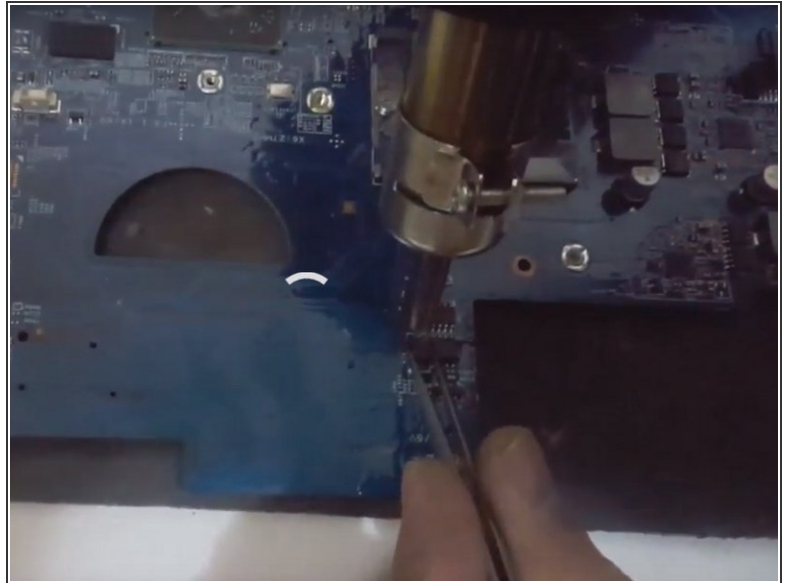
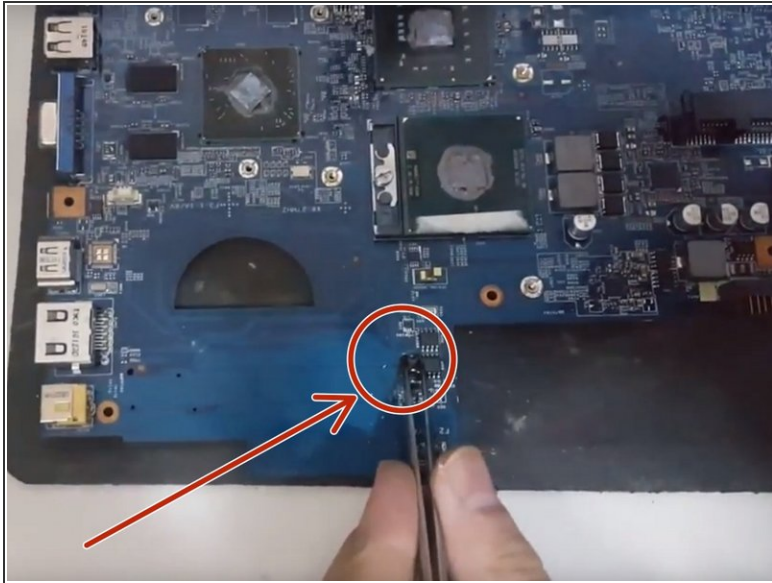
---



## TOOLS:

- [Hot Air Rework Station Hakko FR-810](#) (1)
-

## Step 1 — Diode CH9i B14A



- We hold the diode by a pince.
- We remove the diode by the hot air.

To reassemble your device, follow the instructions in reverse order.