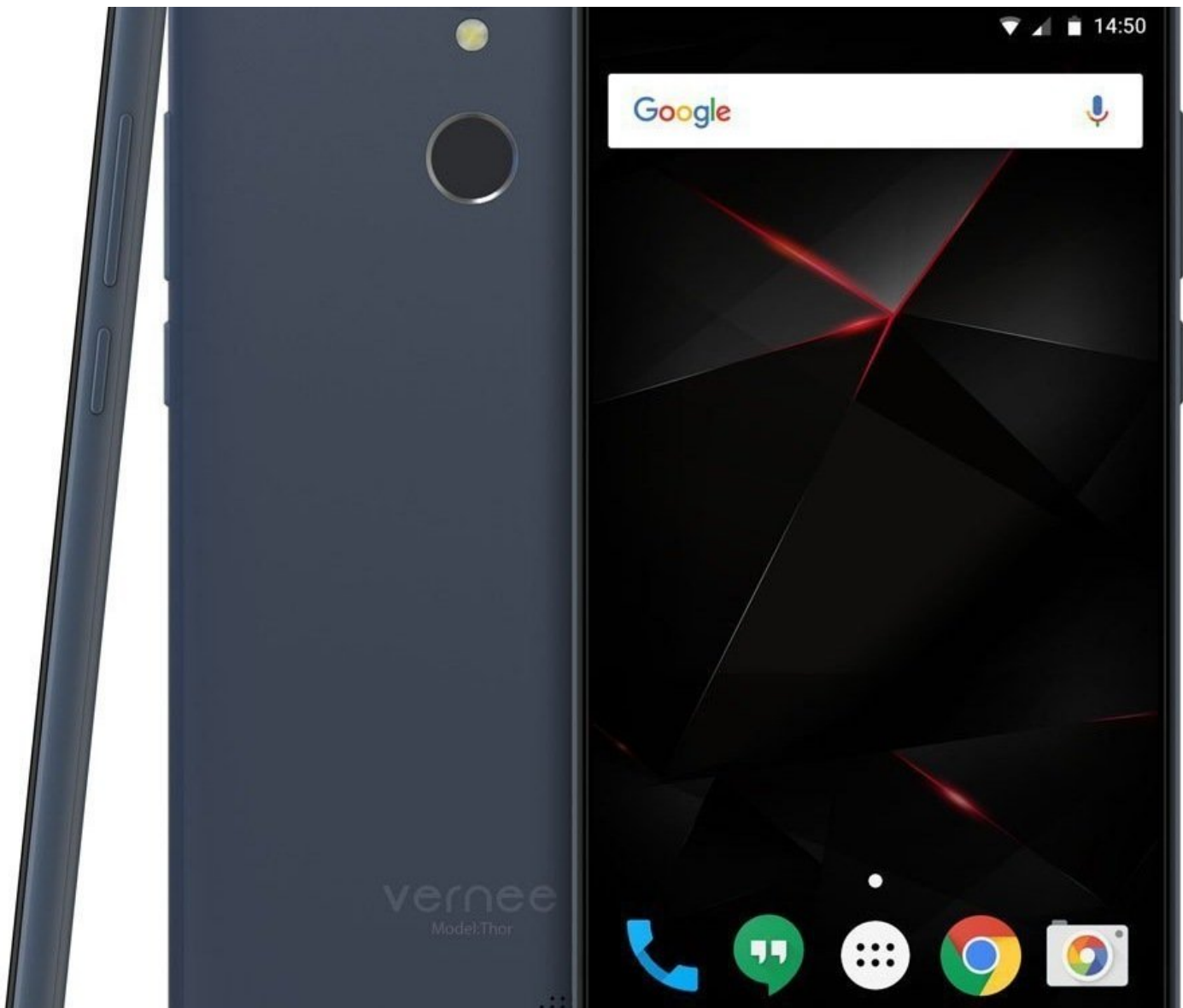




Vernee Thor Disassembly

Disassemble your Vernee Thor

Written By: Tim



INTRODUCTION

How to take apart your phone up to removing the battery



TOOLS:

- [iFixit Opening Picks set of 6](#) (1)
 - [Phillips #0 Screwdriver](#) (1)
-

Step 1 — Prepare your phone



⚠ Before you proceed, discharge your battery below 25%. A charged lithium-ion battery can catch fire and/or explode if accidentally punctured.

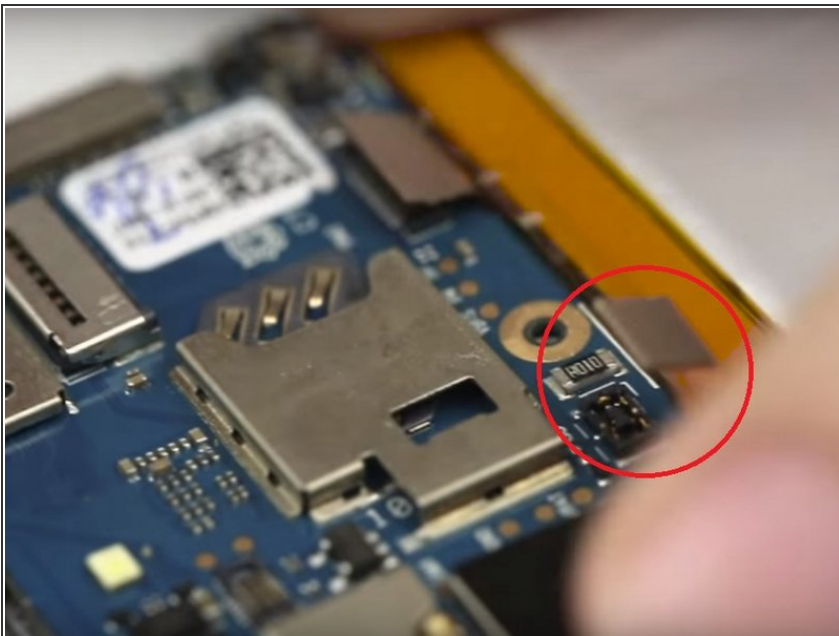
- Shut down your phone.
- Set the phone down on a soft surface with space to store removed parts safely.
- Unclip and remove the rear cover,
- Remove any SIM/MicroSD cards.
- Unscrew 12 black screws. A magnet is helpful for storing them. Try a fridge magnet face down.
- i** Put adhesive tape over the volume and power buttons so they don't get lost,

Step 2 — Remove the frame



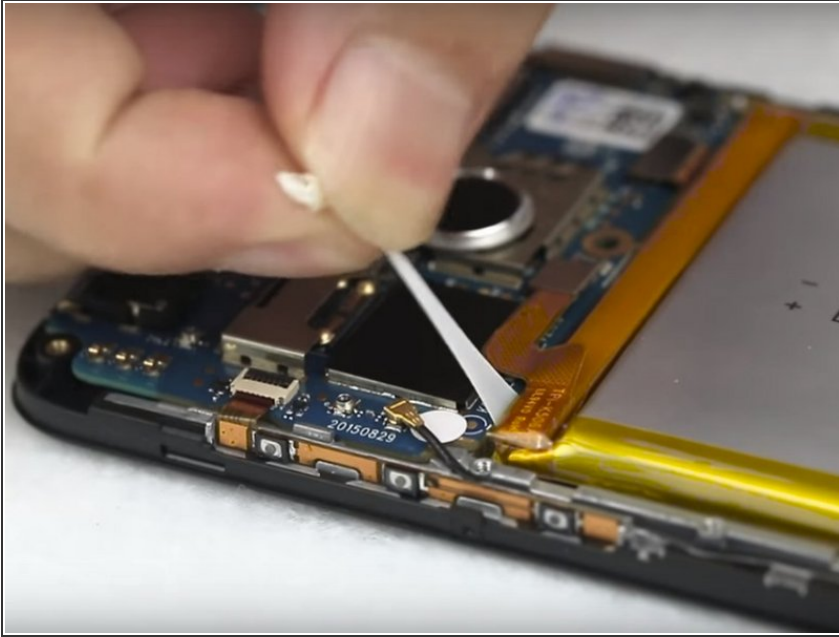
- Use a pick or your thumbnail around the display bezel to separate the frame from the phone.
- Set aside the frame being careful not to lose the volume and power buttons.
- ❗ If the metal battery shield did not come off with the frame, lift it off and put it with the frame.

Step 3 — Disconnect the battery



- Gently pry the battery plug up as shown.
- ⚠ Take care to only pry up on the battery connector, and not the socket on the logic board. If you pry up on the logic board socket, you may break the connector entirely.
- Bend the cable up so the plug can't touch the board.

Step 4 — Remove the battery



- Unpick the white tabs from the top of the battery and pull gently and slowly as shown. Be careful not to snag the tapes. If both tapes come out cleanly the battery will be free. Hold the battery down with your other hand.
 - ⓘ If the white tapes snap under the battery, gently pry the long edges of the battery away from the metal midframe with a flat plastic pry tool such as a bank card.
- ⚠ Be careful not to damage the flat cable underneath the battery!