



PS3 Dual Shock 3 Controller Charging Port Replacement

To complete this repair, the user must possess...

Written By: Attak



INTRODUCTION

To complete this repair, the user must possess skills in soldering, and proper tools needed to perform the repair.

TOOLS:

Portable Soldering Iron (1)
Desoldering Pump (1)
Lead-Free Solder (1)
Desoldering Braid (1)

PARTS:

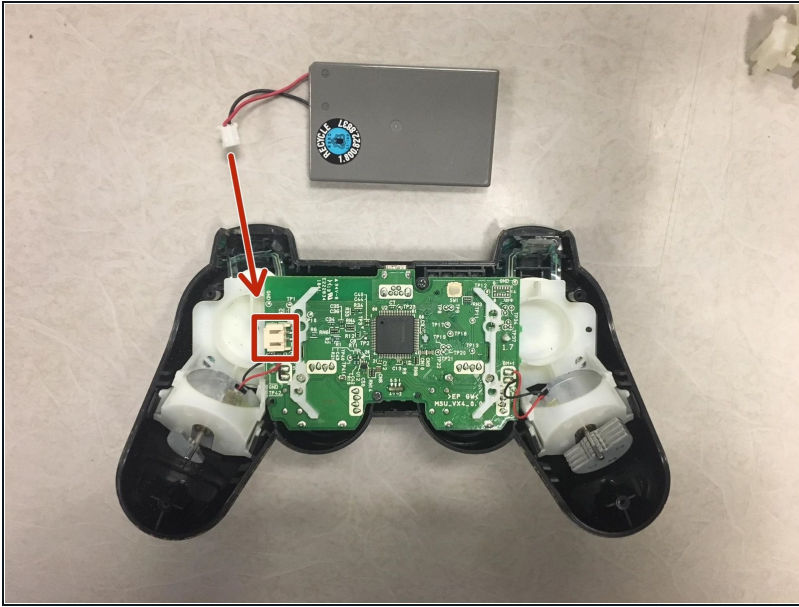
9 pin charging port (1)

Step 1 — Opening the Controller



- Remove the 5 screws on the back of the controller.
- The back housing of the controller can now be removed.

Step 2 — Removing the Battery



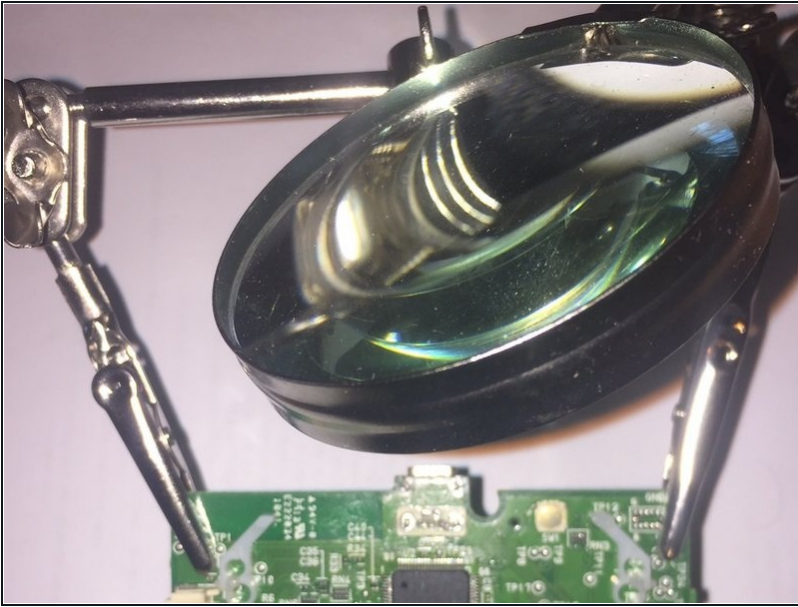
- Remove battery by unlatching the battery cables from battery connector clip.

Step 3 — Freeing the Motherboard



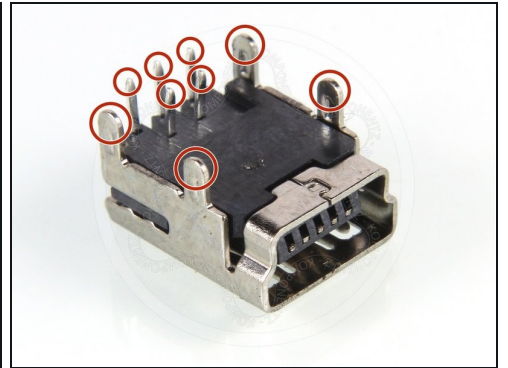
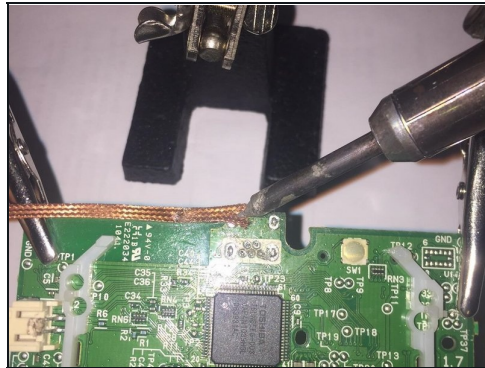
- Remove the two screws holding the motherboard to the front controller housing.
- Next, remove the motherboard assembly from the controller housing. This is done by pressing in the clips on each side of the handle.
- Freeing the motherboard from the housing will provide better access to the charging port.

Step 4 — Preparing the Soldering Station



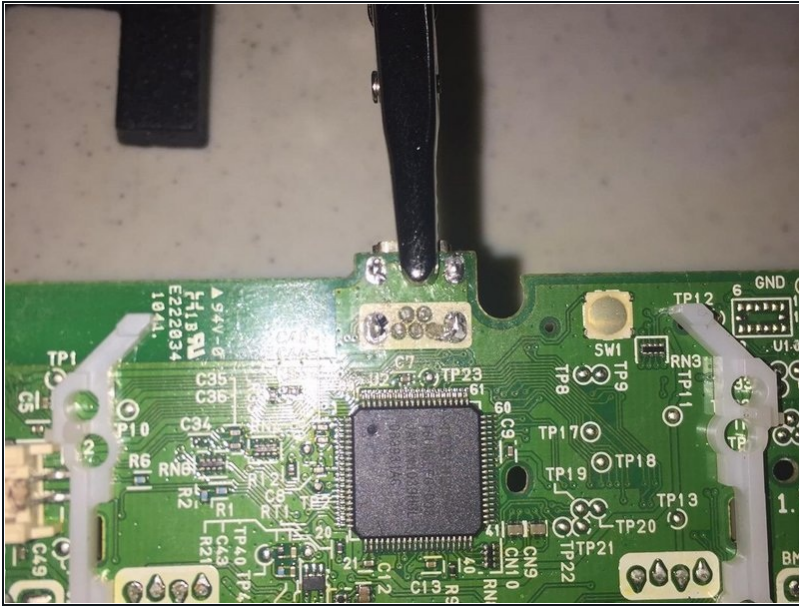
- Prepare your station for the de-soldering of the charging port.

Step 5 — Desoldering



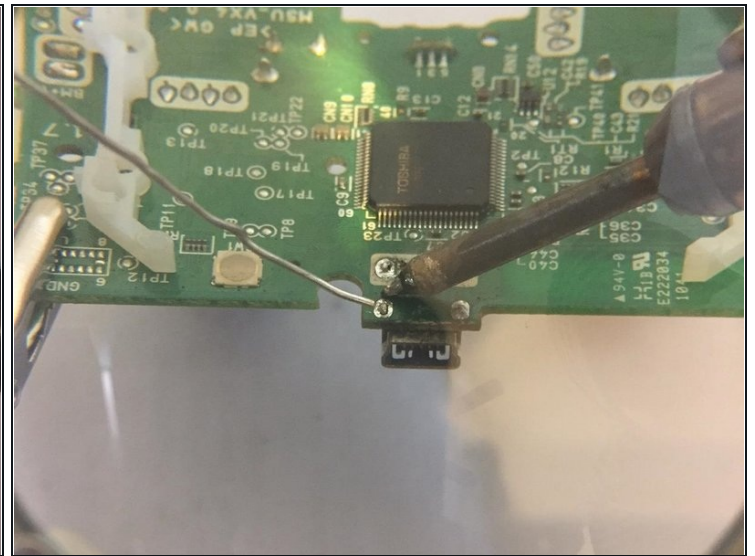
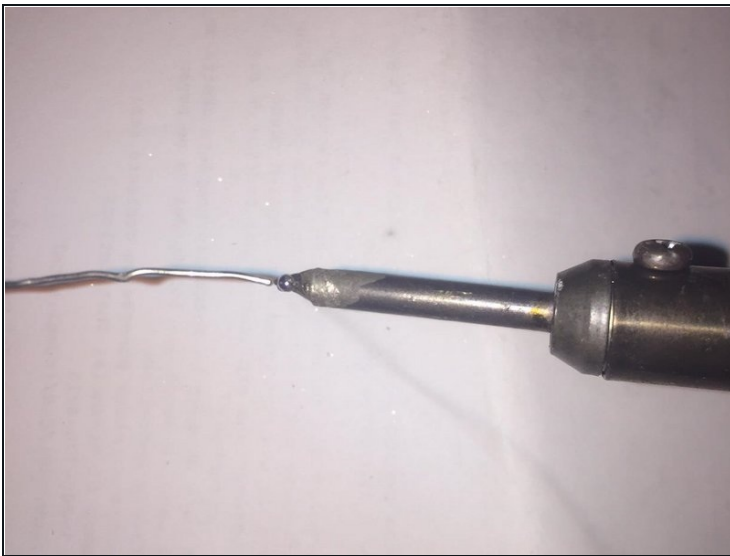
- To remove the defective charging port, you will need to de-solder the 9 pins holding the port to the motherboard.
- First, used the [desoldering pump](#) to remove the solder from all 9 pins.
- Then, use the desoldering wick to remove any excess solder left on the motherboard.

Step 6 — Securing New Charging Port



- After the charging port is removed, place the new charging port into position.
- Hold the new port in place by using a clip to keep it from moving.

Step 7 — Soldering The New Port



- Tin the soldering iron before soldering the connections. This is done by applying a small amount of solder to the tip of the hot iron.
- Solder the 9 pin connections that connect the charging port to the motherboard.

To reassemble your device, follow instructions 1-3 in reverse order.

