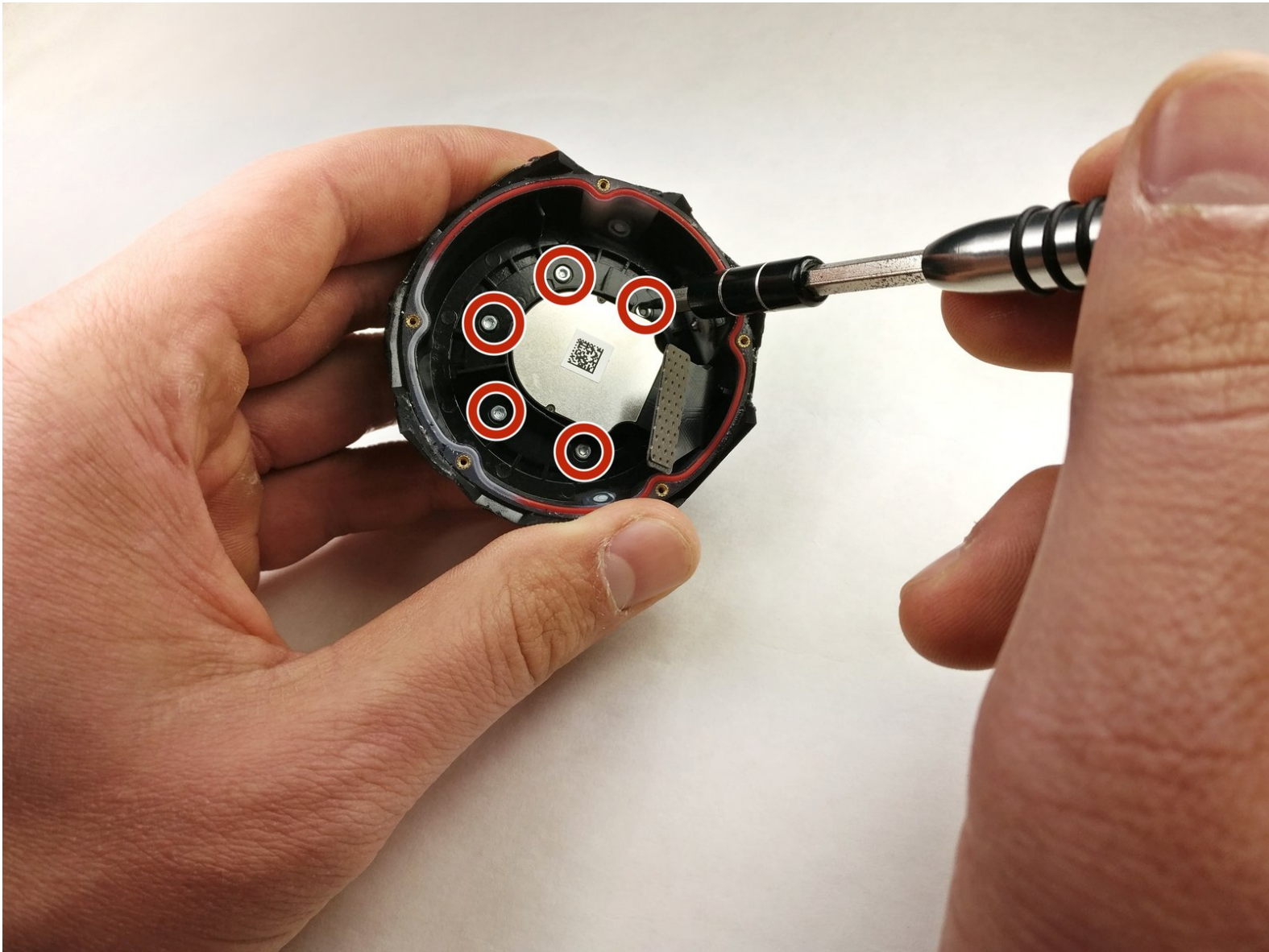




360fly 4K Lens Replacement

This guide shows how to replace the lens 360fly 4K camera.

Written By: Jacob Herron



INTRODUCTION

The 360fly is a lens, camera, and storage device all in one. Its internal battery and 32GB memory give users the power to capture approximately 2 hours of 360° HD footage each time out.

This lightweight camera provides everything users need to take entire surroundings from a single digital unit.

- Powerful 16-megapixel image sensor and 4K video resolution 2880 x 2880 pixels up to 30 fps.
- Eight glass element ultra-fish-eye lens is used to capture 360-degree video.

If you are unable to clearly capture an image or the lens has been damaged in some way, follow this guide to replace the lens.

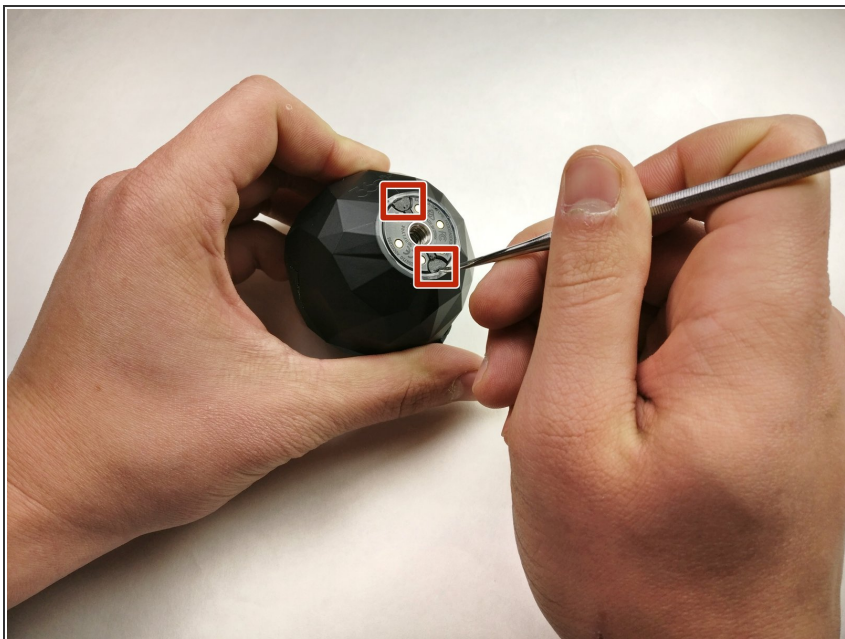
Source: [Quick Guide to 360 Fly Video Camera](#)



TOOLS:

- [T4 Torx Screwdriver](#) (1)
 - [Metal Spudger](#) (1)
 - [iFixit Opening Tool](#) (1)
-

Step 1 — Battery



- Flip the camera upside down and peel off the two plastic screw covers with the metal spudger to reveal the screws.

Step 2



- Remove the two 5 mm screws from the bottom of the camera with a T4 screwdriver.

Step 3



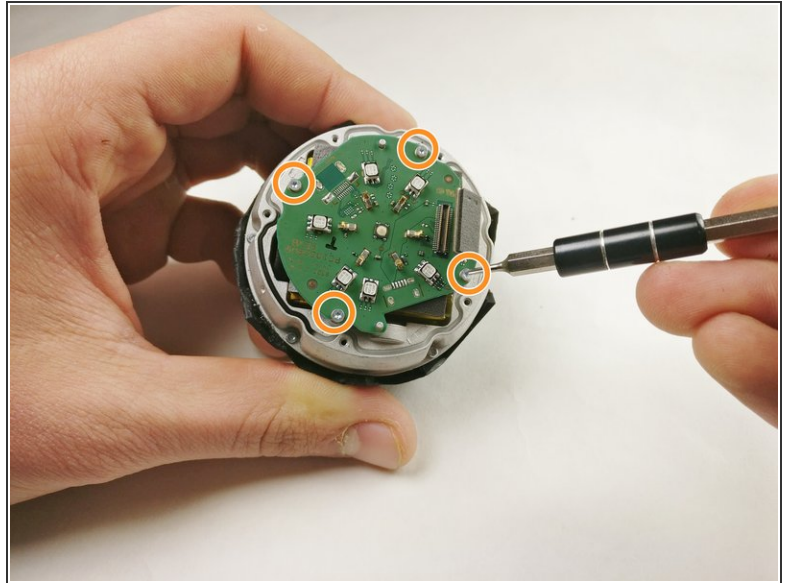
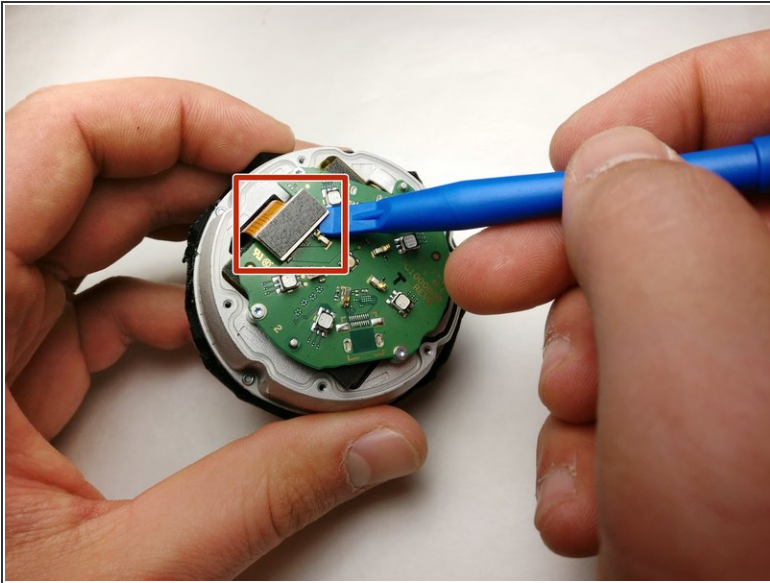
- Gently pry the plastic ring from around the charging plate with the metal spudger.
- Remove the outside shell by pressing against the center of the charging plate and pulling the bottom shell away from the top shell.

Step 4



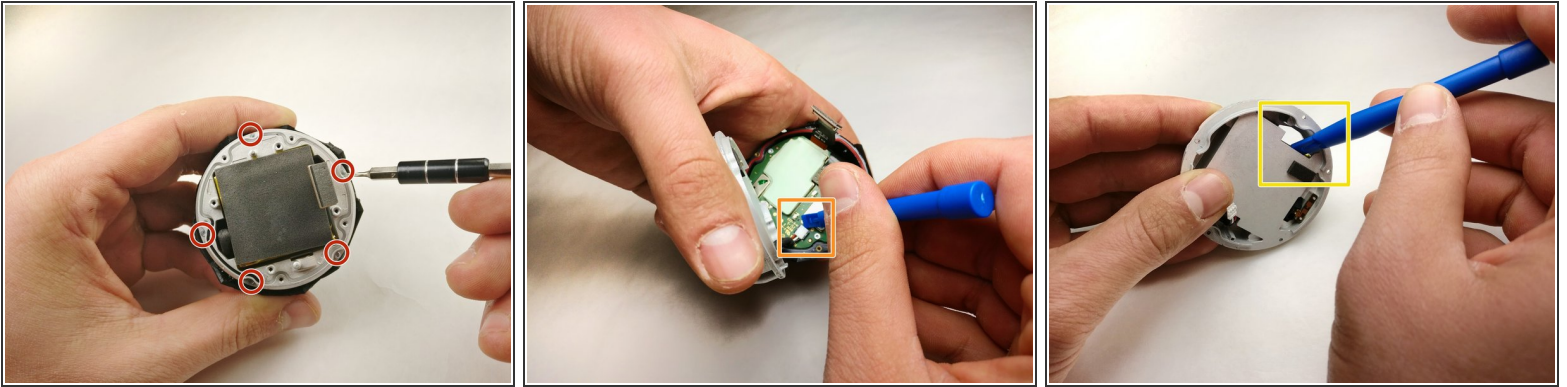
- Remove the five 2 mm screws using a T4 screwdriver.
- Pull off the charging plate assembly.

Step 5



- Gently pry the plug off the port on the circuit board with a plastic opening tool.
- Remove the four 2 mm screws using a T4 screwdriver.
- Remove the circuit board from the device.

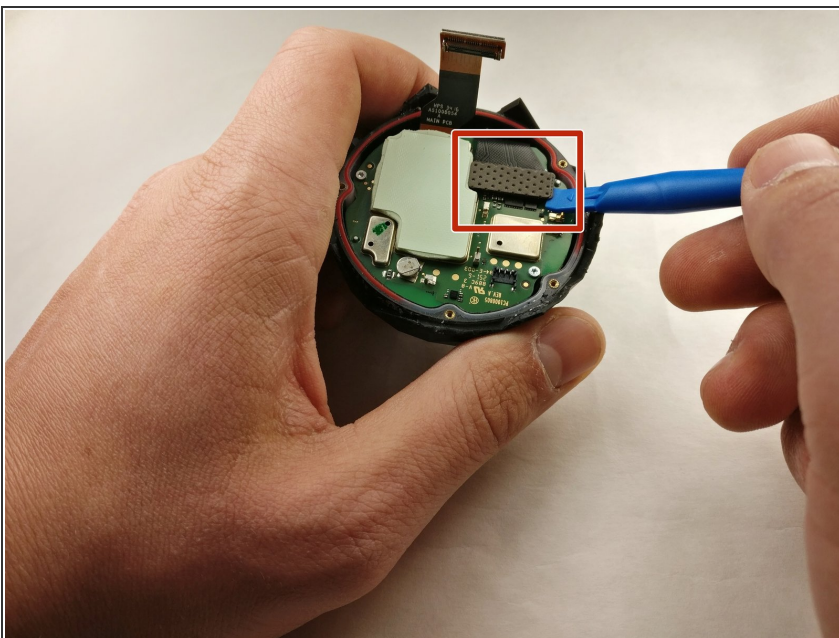
Step 6



- Remove the five 4 mm screws around the battery assembly with a T4 screwdriver.
- Lift the battery assembly and gently pry the plug out of its port on the board below with a plastic opening tool.
- Press the battery from the back of the battery assembly to remove it with a plastic opening tool until the glue releases the battery.

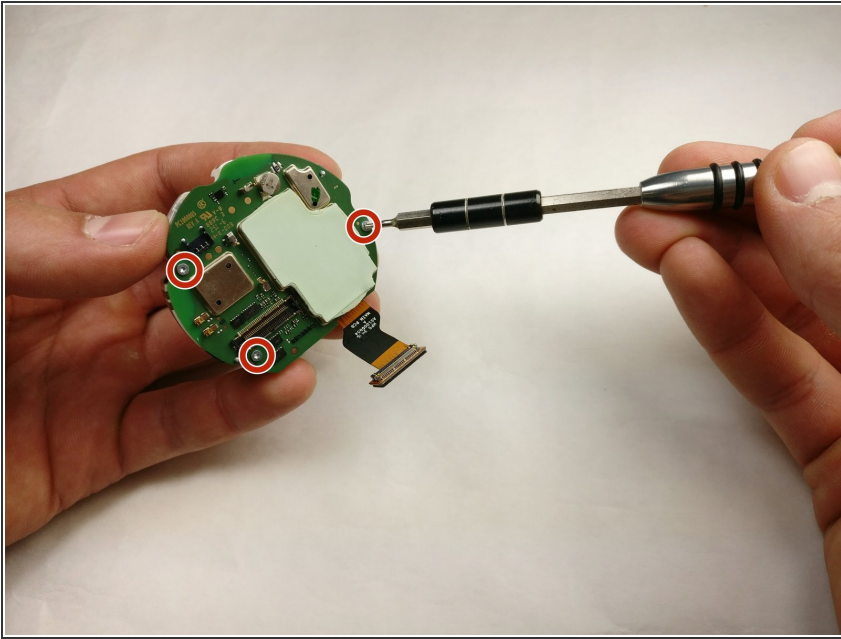
⚠ Potential for device damage: Do not puncture or bend the battery. Use a small amount of heat to assist in softening the adhesive if necessary.

Step 7 — SD Card



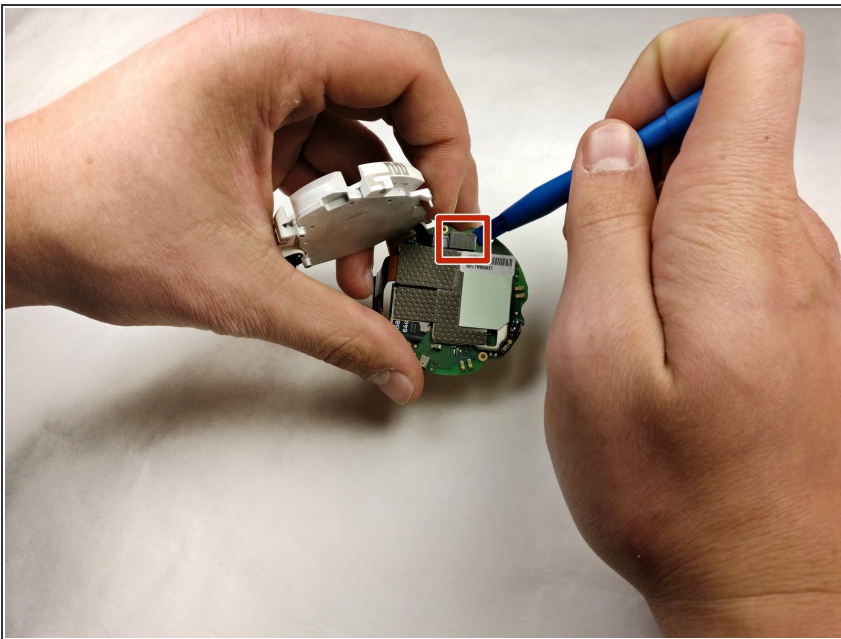
- Gently pry the plug from the motherboard and remove the motherboard from the assembly.

Step 8



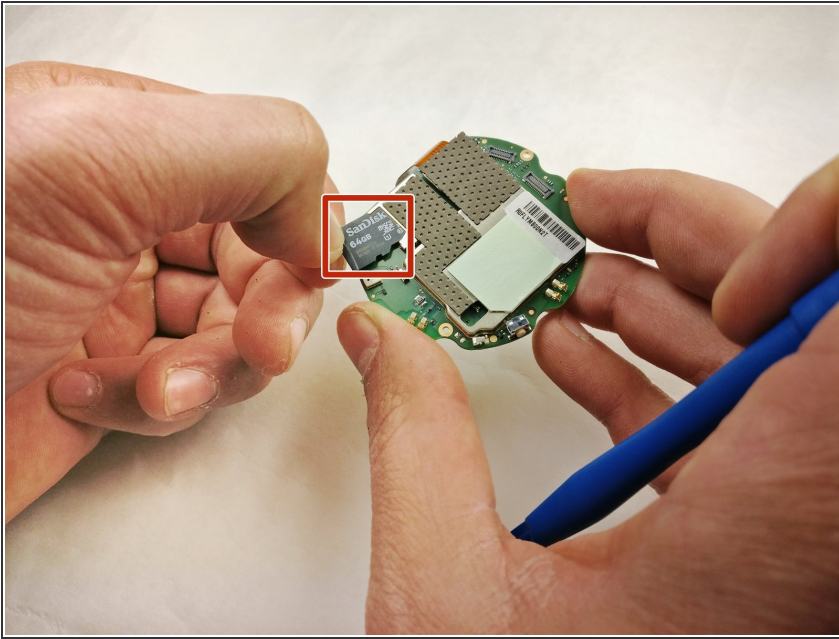
- Remove the three 3 mm screws from the circuit assembly with a T4 screwdriver.

Step 9



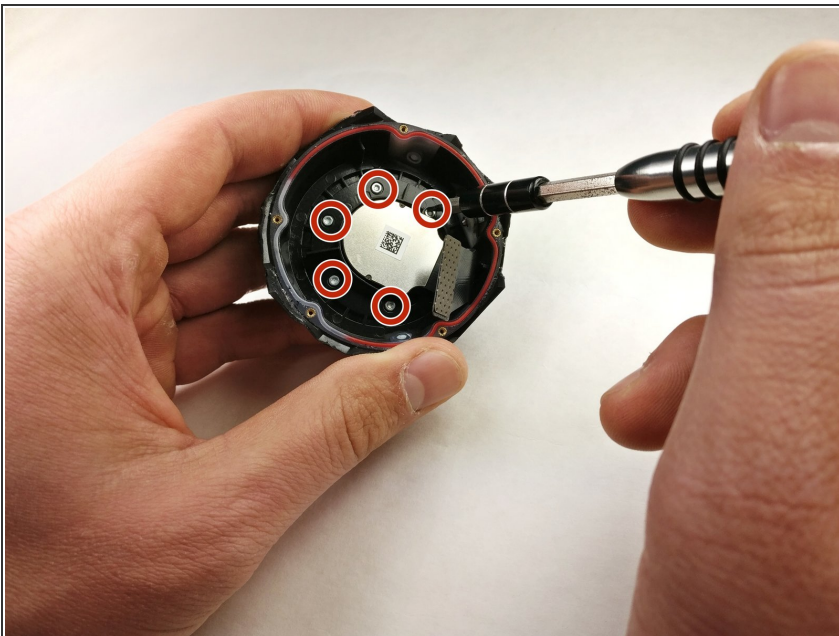
- Gently pry out the plug from the circuit assembly.

Step 10



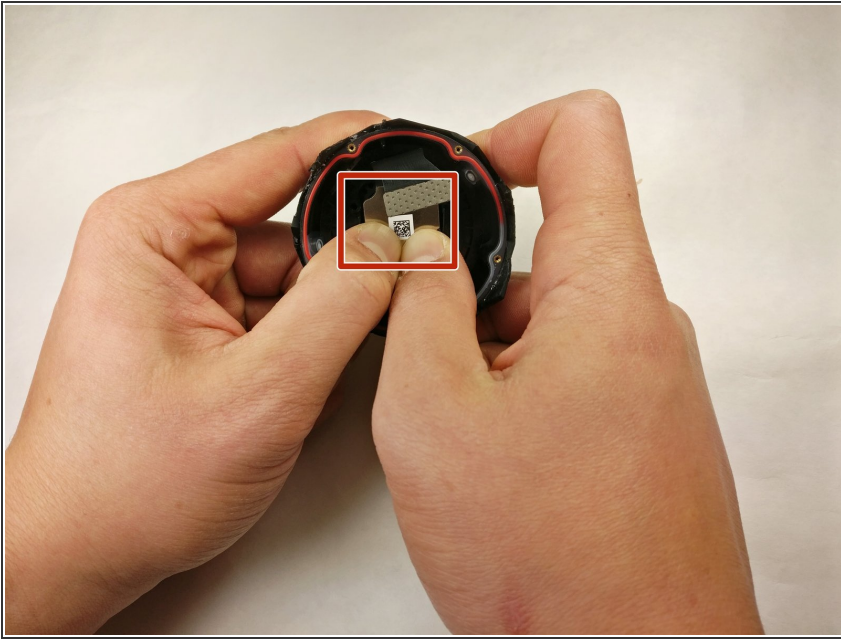
- Press and release the SD card to remove it from the circuit assembly.

Step 11 — Lens



- Unscrew the five 3mm screws with a T4 screwdriver.

Step 12



- Gently push against the lens module to remove it from the 360fly 4K assembly.

To reassemble your device, follow these instructions in reverse order.