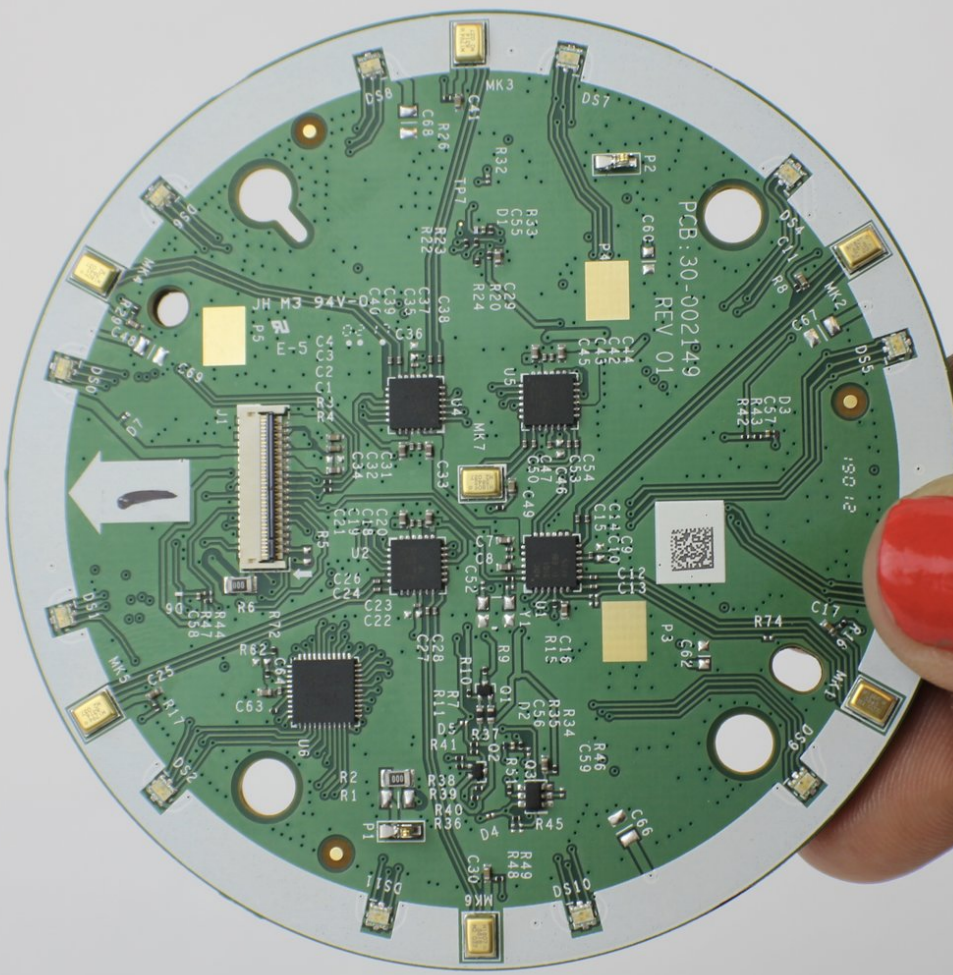




Amazon Echo Dot 2nd Generation Analog to Digital Convertor Replacement

Replace the Analog to Digital Convertor for this device.

Written By: Cassidy O'Connor



INTRODUCTION

Use this guide to replace the analog to digital convertor on the Amazon Echo Dot. This component is located on the LED/speaker board, however, the whole board must be replaced, rather than just the analog to digital convertor.



TOOLS:

- [iFixit Opening Tools](#) (1)
 - [Metal Spudger](#) (1)
 - [T8 Torx Screwdriver](#) (1)
-

Step 1 — Analog to Digital Convertor



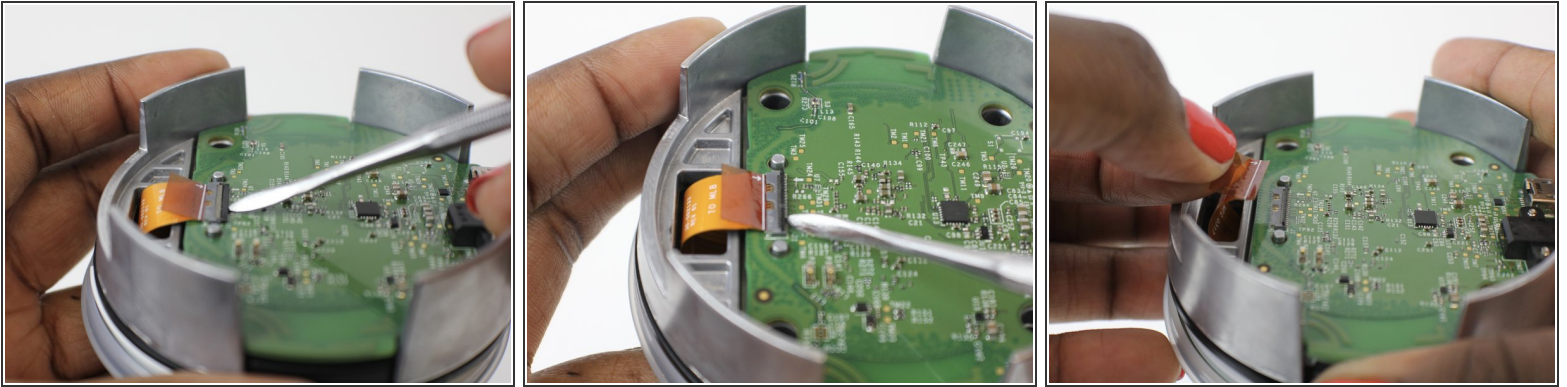
- Power off and unplug the echo
- Using the plastic opening tool, peel off the rubber layer on the bottom of the echo

Step 2



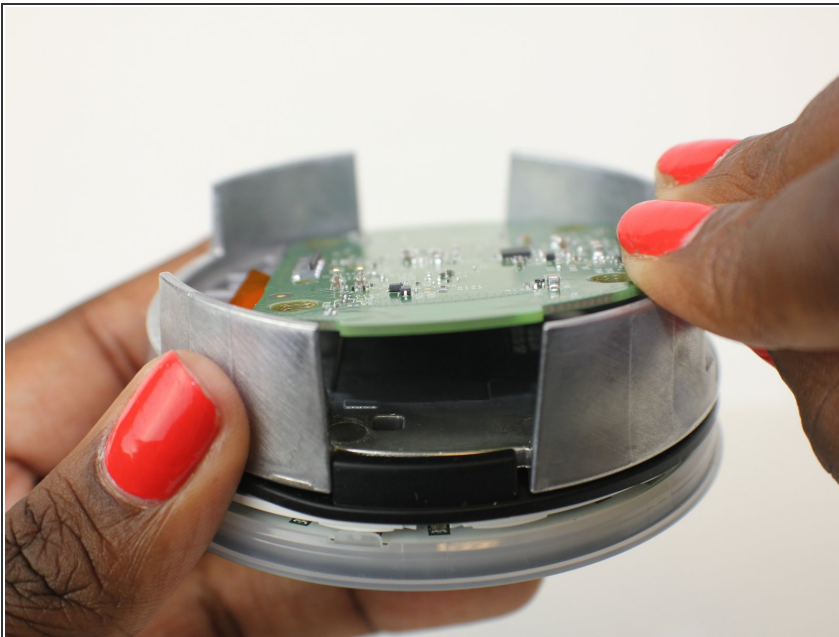
- Use a T8 screwdriver to unscrew the four 1.6mm torx screws
- Remove the black cylindrical base

Step 3



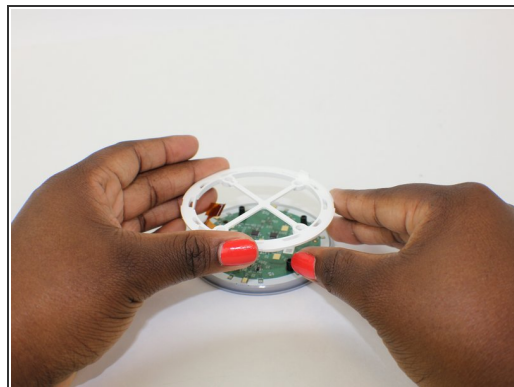
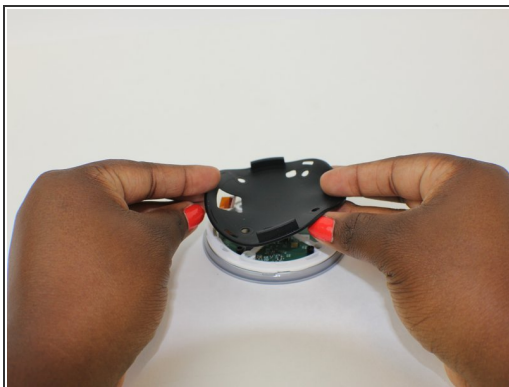
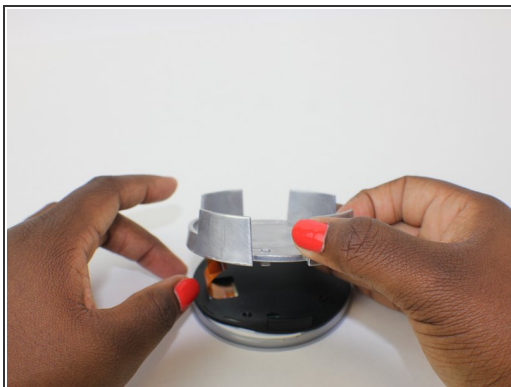
- Use the metal spudger to lift the ZIF connector
- Remove the ribbon cable from the slot

Step 4



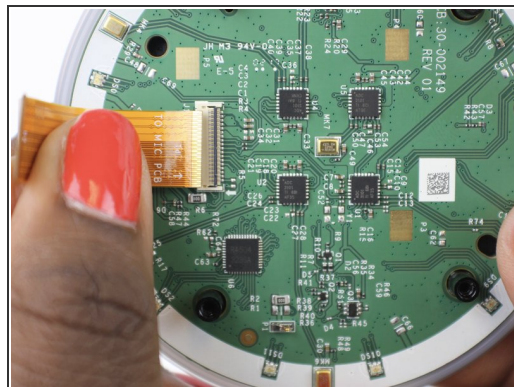
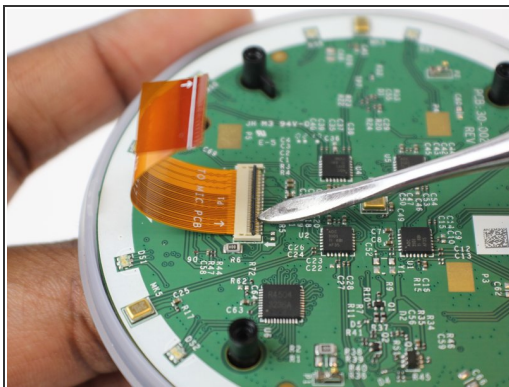
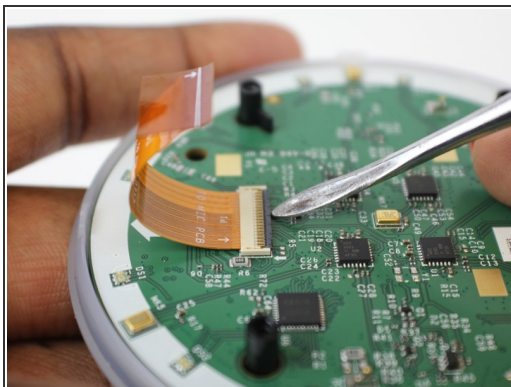
- Remove the motherboard

Step 5



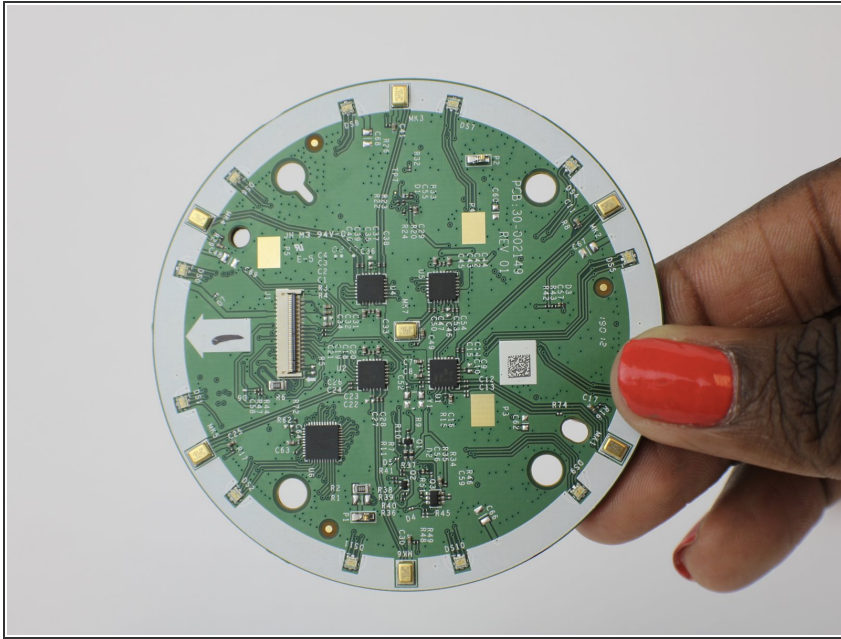
- Remove the silver divider
- Remove the black rubber divider
- Remove the plastic white frame

Step 6



- Use the metal spudger to lift the ZIF connector
- Remove the ribbon cable from the slot on the speaker board

Step 7



- Remove the speaker board which contains the analog to digital converter

To reassemble your device, follow these instructions in reverse order.