



Archived

DualShock 4 CHU-ZCT2U Outer Shell Replacement

This will show you how to remove the outer...

Written By: David Seale



INTRODUCTION

This will show you how to remove the outer shell of the Dualshock 4 so you can replace it or get inside the controller.



TOOLS:

[iFixit Opening Tool](#) (1)
[Phillips #00 Screwdriver](#) (1)
[Tweezers](#) (1)



PARTS:

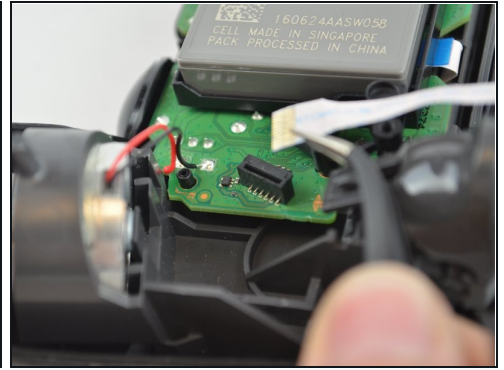
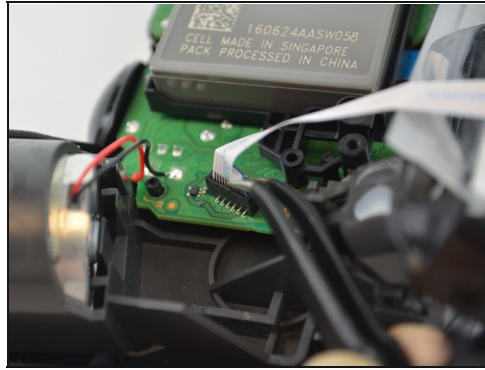
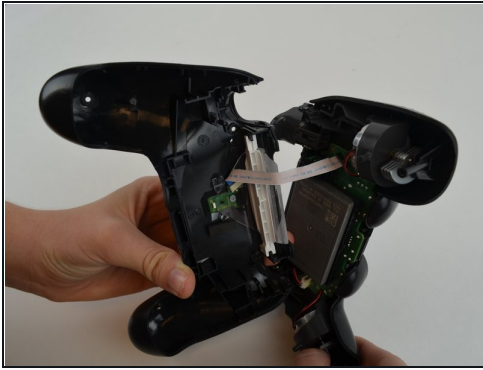
[DualShock 4 Controller Front Panel \(CUH-ZCT2U\)](#) (1)
[DualShock 4 Controller Rear Panel \(CUH-ZCT2U\)](#) (1)

Step 1 — Outer Shell



- Unscrew the four 6.5mm screws, using a Phillips-Head screwdriver.
- Pry the two halves of the shell apart using a plastic opening tool.
- ⓘ Be careful, as there will be a ribbon connecting the inner workings of the controller. It will not separate into two parts just by pulling apart the shell.

Step 2



- Pull the ribbon cable out of the motherboard port to fully separate the two halves, using a pair of [tweezers](#).

To reassemble your device, follow these instructions in reverse order.