



Thrustmaster Ferrari 458 Spider Racing Wheel and Pedal Connection Port Replacement

This guide will show you how to replace the connection port for the pedal of your Thrustmaster Racing Wheel.

Written By: Mario Nunez



INTRODUCTION

This guide will show you how to replace the connection port for the pedals.



TOOLS:

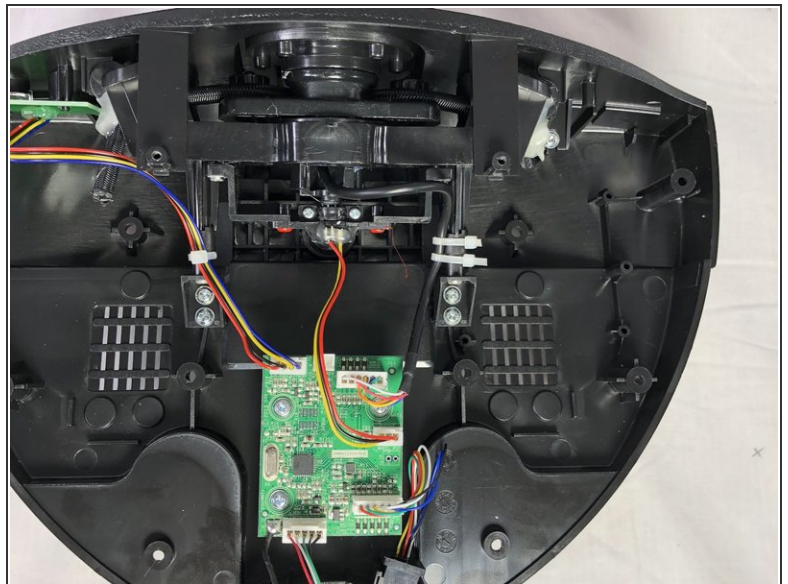
- [JIS #1](#) (1)
 - [2.5 mm Hex Key](#) (1)
 - [H2.5 screw driver](#) (1)
 - [iFixit Opening Tools](#) (1)
-

Step 1 — Bottom Cover



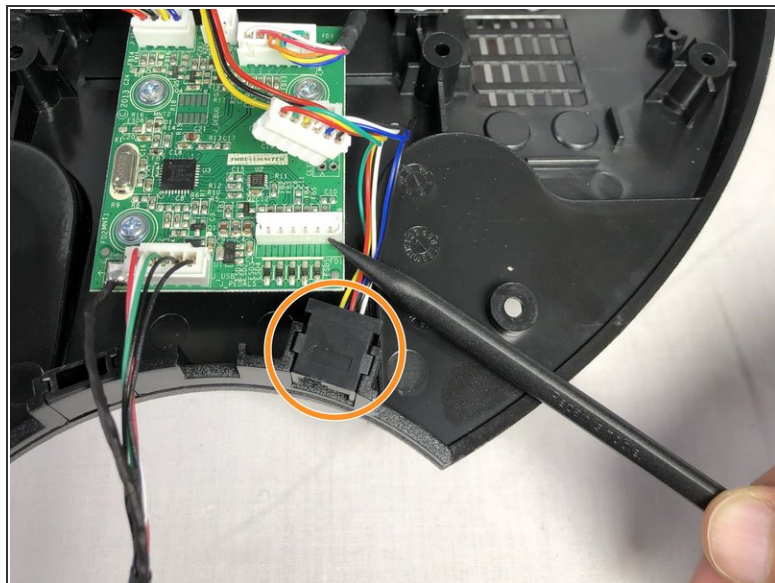
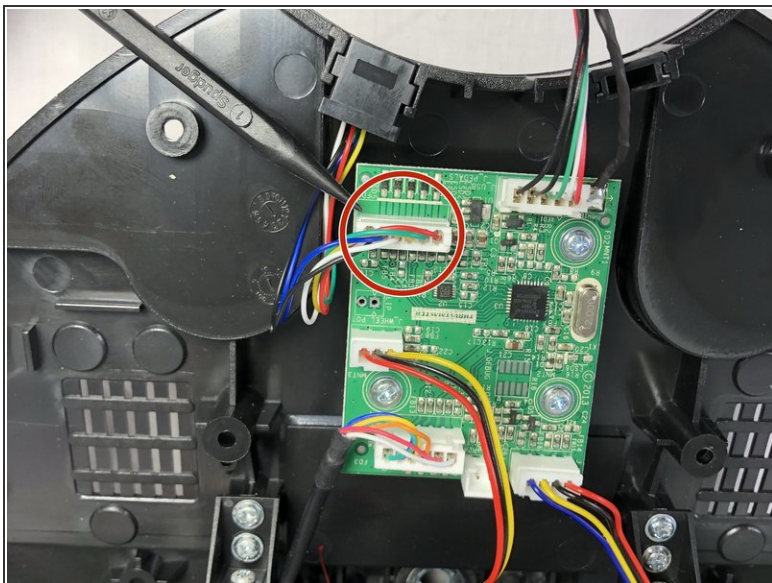
- Remove the black 10mm using a JIS #1 screw driver.
- ⓘ There are 12 screws.
- ⓘ Two of the screws are deep inside the device you might need to use a slim screwdriver.
- ⓘ In the picture you see a plastic opening tool instead of screw driver because we did not have our screw driver when we were taking the picture.

Step 2



- Remove the two 10mm black screws on the top of device using a Hex 2.5mm Key. Only the two outside screws.
- Gently pull apart both halves of device to access inside.

Step 3 — Wheel and Pedal Connection Port



- Using a small plastic opening tool, gently pry up the white connector that connects the pedals to the board.
- By pulling up on both ends of the port you will be able to pull out the port to remove it.

To reassemble your device, follow these instructions in reverse order.