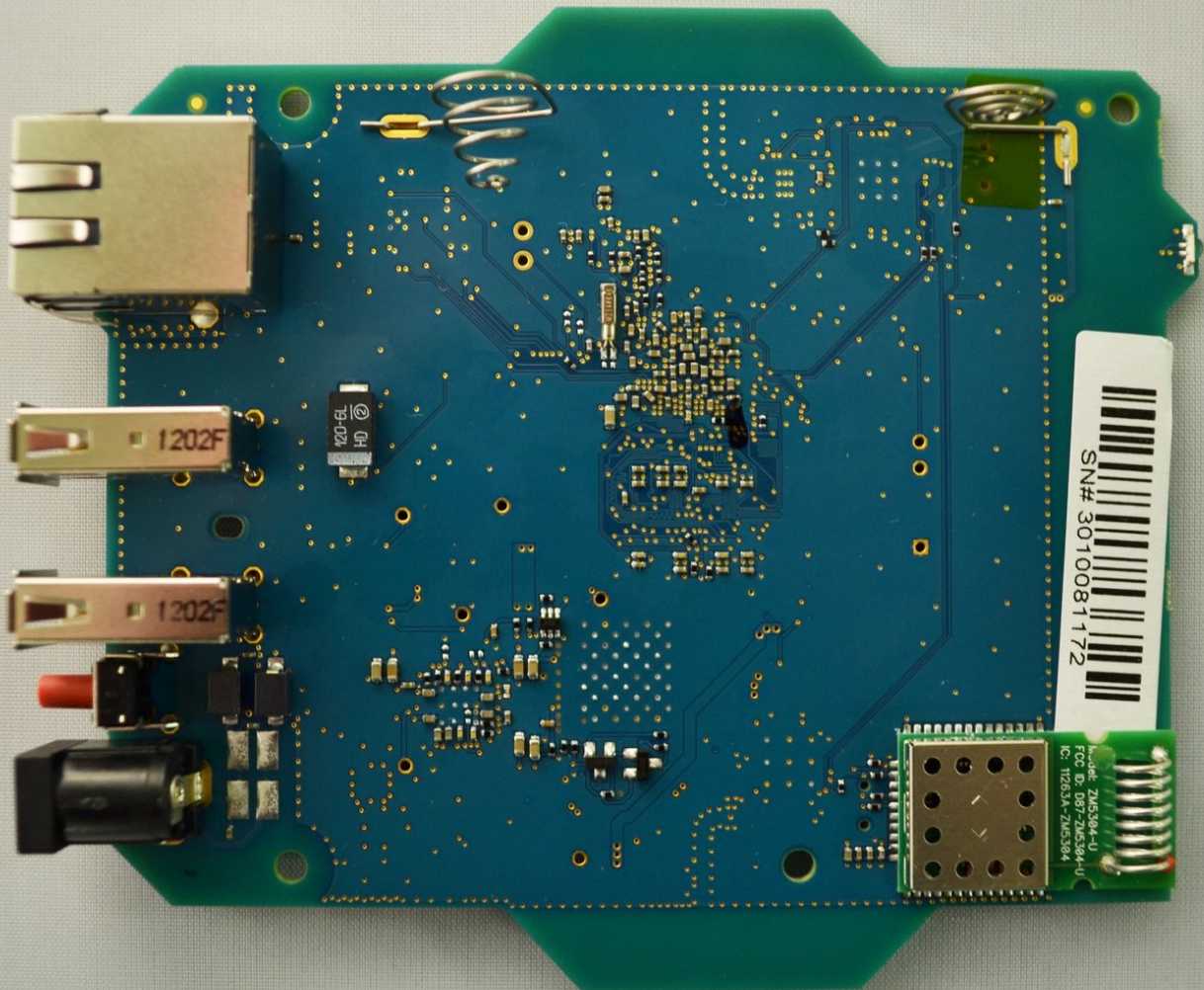




Samsung SmartThings Hub Motherboard Replacement

This guide outlines a procedure for replacing the device's motherboard.

Written By: Dylan Butler



INTRODUCTION

This guide outlines a procedure for completely removing and replacing a non-functioning motherboard on the Samsung SmartThings Hub.

TOOLS:

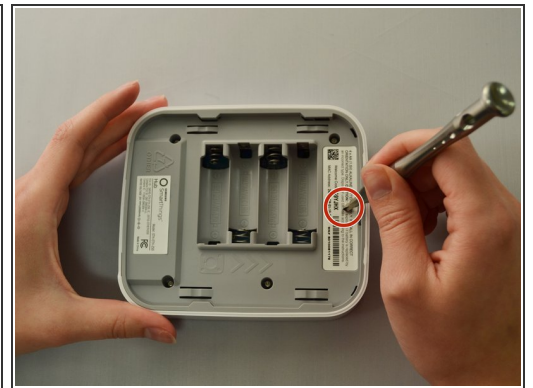
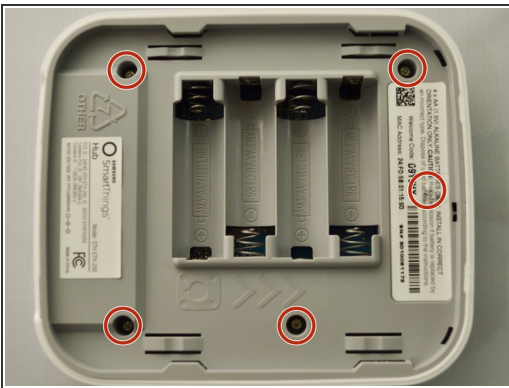
- [Phillips #1 Screwdriver](#) (1)
-


Step 1 — Motherboard



- To open your device, gently slide the grey bottom cover in the direction of the arrow as shown.

Step 2



 Make sure the batteries are removed before attempting disassembly.

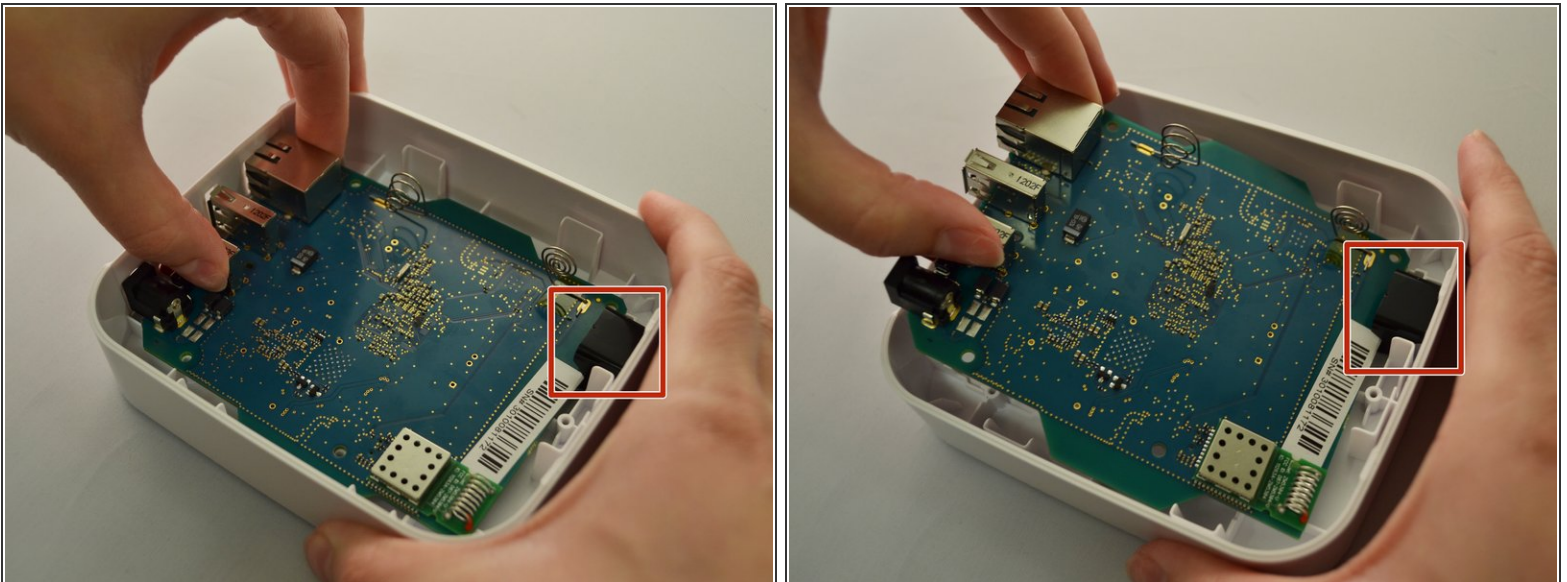
- Using your Phillips #1 screwdriver, remove the four visible 12.5mm screws.
- Next, either peel up the longer of the two stickers or punch a hole with the tip of your screwdriver to access the fifth 12.5mm screw.

Step 3



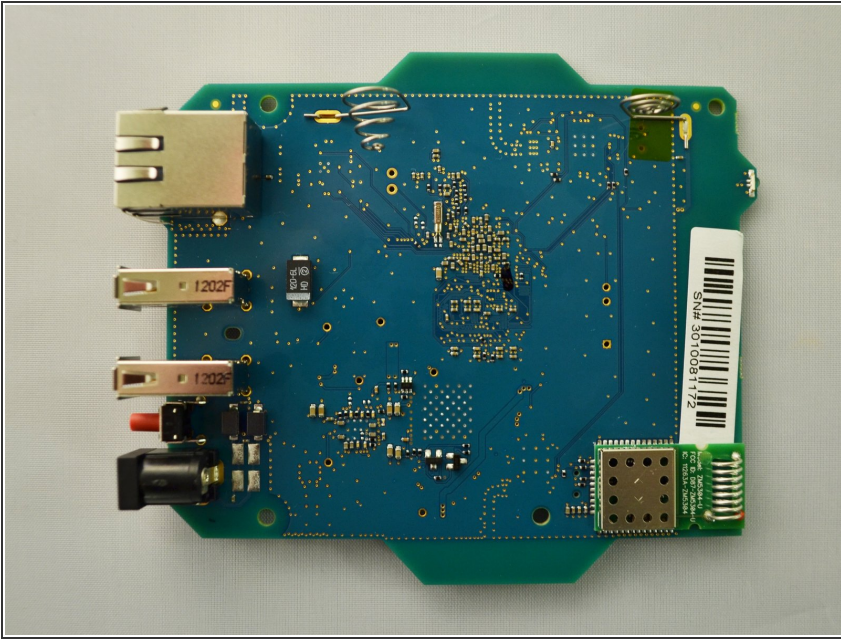
- Once all five screws are removed, split the casing apart by applying gentle upwards pressure against the positive terminals in the battery compartment.

Step 4



- To remove the motherboard, grip the USB port and the Ethernet port. Lift up, then slide towards the front of the device to release the motherboard from the black retaining clip shown on the right.

Step 5



- Replace with new, known-good motherboard.

To reassemble your device, follow these instructions in reverse order.