



# Toshiba Satellite Radius P55W-B5112 Hard Drive Replacement Replacement

This guide can be used to locate, remove, and replace the hard drive on your Toshiba Satellite Radius P55W-B5112.

Written By: Mudassar Abbas Khan



---

## INTRODUCTION

This guide can be used to locate, remove, and replace the hard drive on your Toshiba Satellite Radius P55W-B5112. This guide is very simple, and details one of the most common types of repairs for this type of computer.



### TOOLS:

- [Metal Spudger](#) (1)
  - [iFixit Opening Tools](#) (1)
  - [64 Bit Driver Kit](#) (1)
-

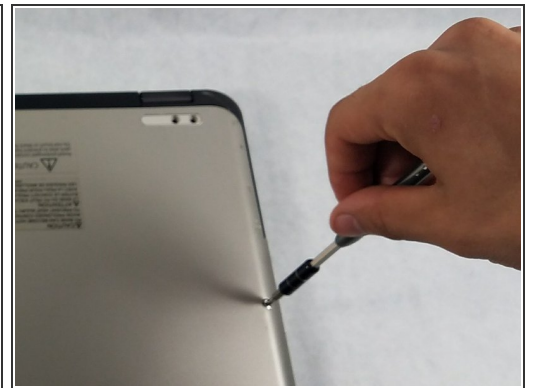
## Step 1 — Battery Replacement



- Unplug your laptop from any source of power.
- Lay your laptop on a soft, clean surface as shown.
- Using the metal spudger, remove the two rubber grips on the bottom face of the laptop, located closest to the hinge.

⚠ The grips may be brittle. Be careful when removing them with the metal spudger so as not to damage them.

## Step 2



- Remove the ten 5mm Phillips #0 screws that secure the back plate to the computer.

### Step 3



- Starting on the edge that is opposite the hinge, use the plastic opening tools to pry the back plate away from the computer.
- Loosen the three non-hinge edges.
- Leave a plastic opening tool in each corner to ensure that one side does not snap closed before you are done opening the others.

 DO NOT lift the back plate away from the computer; it is still connected to the motherboard.

### Step 4



- To loosen the back plate, lift it slightly and gently pull it away from the hinge.
- Flip the back plate open towards the power button, but be sure to not pull on the ribbon cable that connects the back plate to the motherboard.
- Use a plastic opening tool to detach the side of the ribbon cable connected to the computer by prying up gently on the small black lever at the point of attachment.

This document was generated on 2020-11-28 06:18:50 AM (MST).

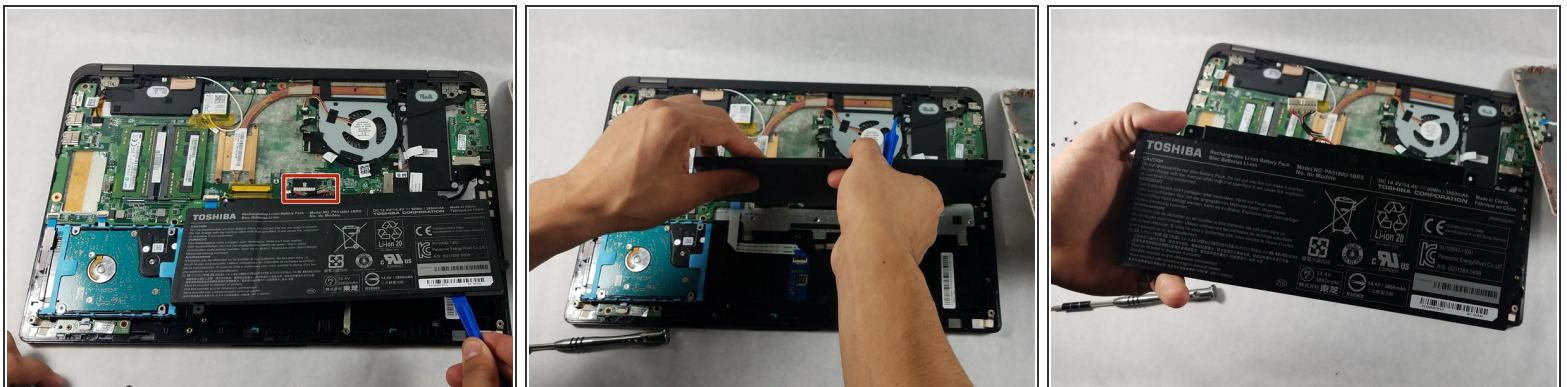


## Step 5



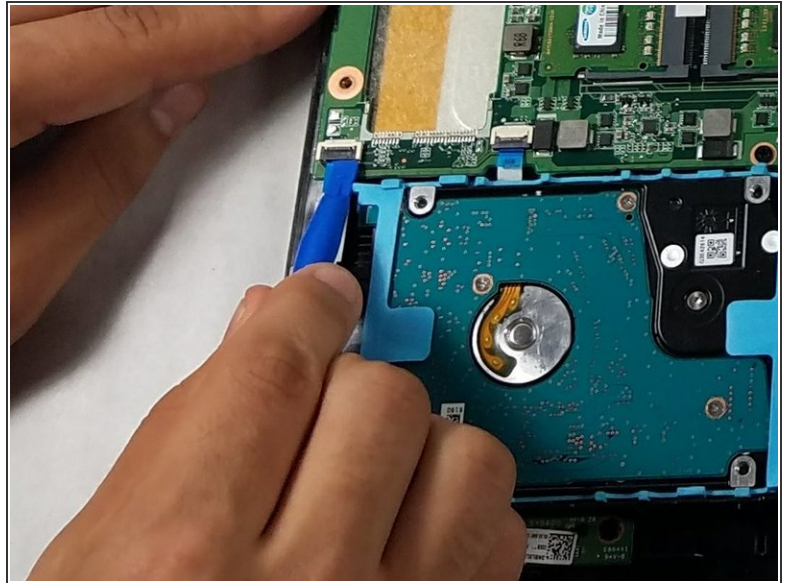
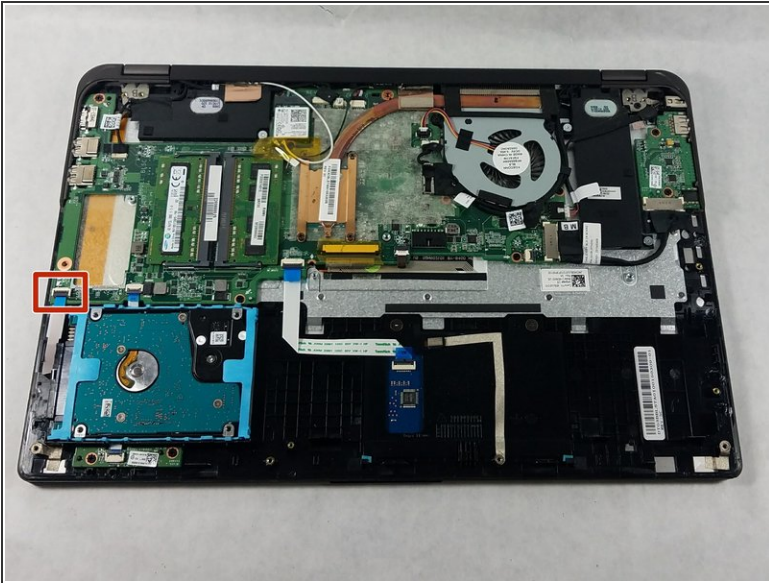
- Remove the four 3mm Phillips #0 screws connecting the battery to the computer.

## Step 6



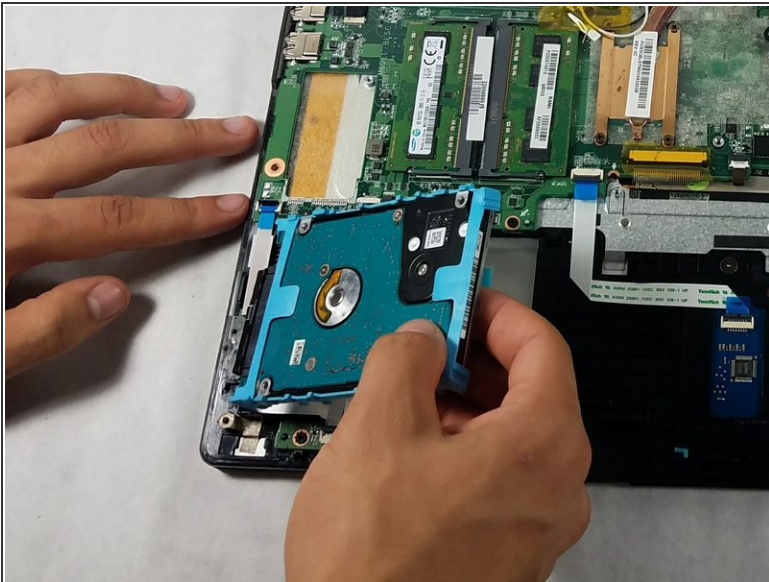
- Use a plastic opening tool to lift the side of the battery that is closest to the long edge of the computer.
- As you are pulling the battery away from the computer, unplug it from the side closest to the short edge of the computer.
- ⓘ There may be a lot of resistance when unplugging the battery. If there is, try to wiggle the male side of the plug back and forth as you remove it.

## Step 7 — Hard Drive Replacement



- Use a plastic opening tool to detach the hard drive's ribbon cable from the computer. Gently lift the black lever at cable's point of attachment to the computer to release it.

## Step 8



- Lift the hard drive from the computer, starting with the edge adjacent to the empty battery slot
- ⓘ There may be some resistance as you remove the hard drive. Wiggling it up and down as you pull it away from the computer will help combat this.

To reassemble your device, follow these instructions in reverse order.