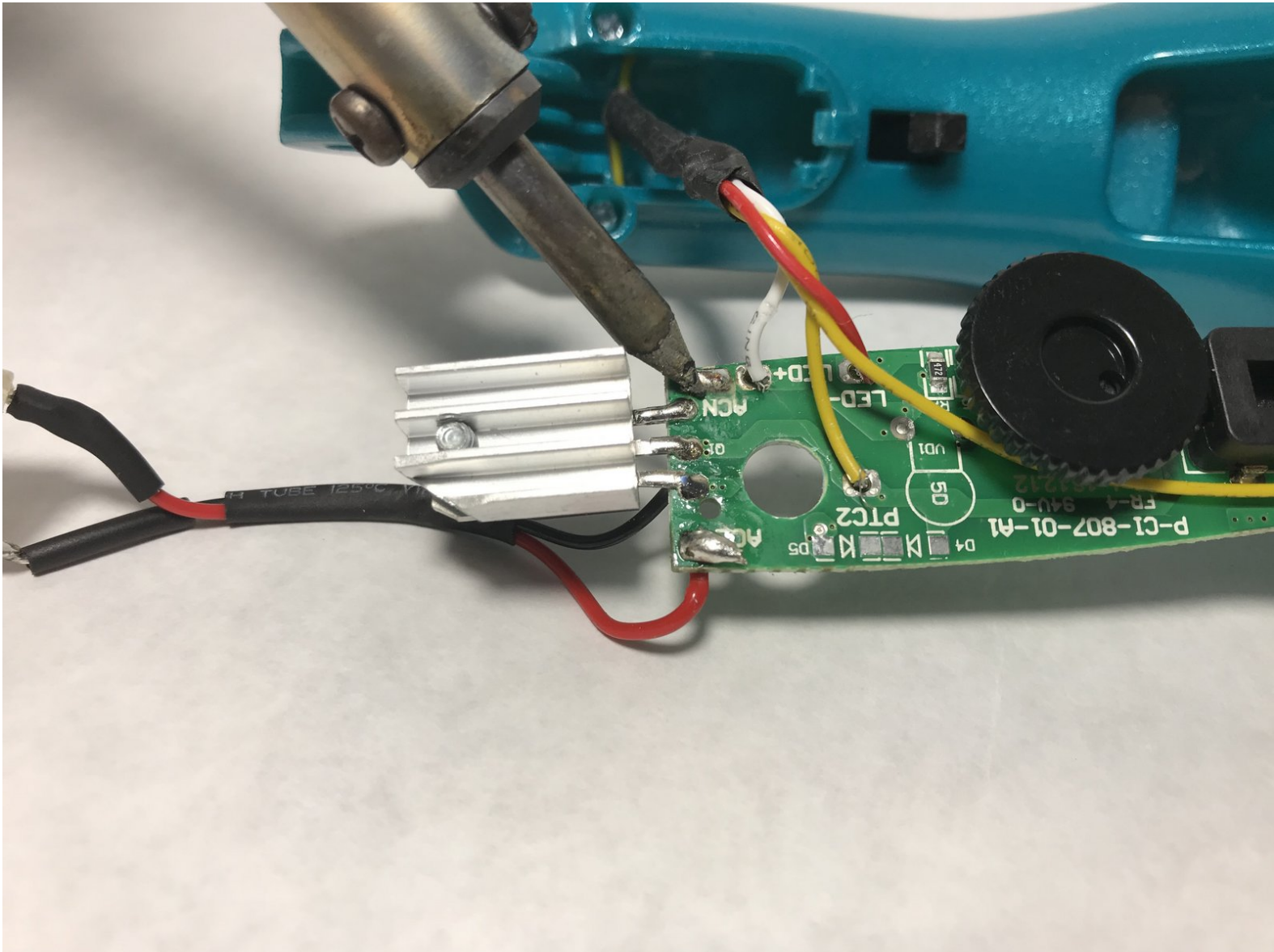




Bed Head Wave Artist Deep Waver Power Lead Connector Replacement

Replace a faulty power lead connector in your Deep Waver.

Written By: Grant Peters



INTRODUCTION

Use this guide to replace the power lead connector in your Deep Waver. It will show you how to split the lower handle housing to gain access to the power lead, as well as other internal components.

The power lead connector can become damaged if the device overheats or has been previously disassembled.



TOOLS:

- [iFixit Opening Tools](#) (1)
- [Metal Spudger](#) (1)
- [Phillips #2 Screwdriver](#) (1)
- [Phillips #1 Screwdriver](#) (1)
- [Rotary Tool](#) (1)
- [Portable Soldering Iron](#) (1)




PARTS:

- [Housing Retainer](#) (1)
- [Power Lead Connector](#) (1)

Step 1 — Lower Handle Housing



 Before disassembling your Deep Waver, be sure to unplug the device to avoid electric shock, and make sure the heating elements of the device are cool to avoid burns.

- Unlock the handle of your Deep Waver to gain access to the screws you need to remove.
- Remove two 10 mm Phillips #01 screws from the lower handle housing.
- Remove one 10 mm Phillips #02 screw from the lower handle housing.

Step 2



- Pry the black screw cover off the side of the lower handle housing using a fine-point spudger or pick. This side will have the model number and other product information embossed on it.

Step 3



- Remove one 10 mm Phillips 1 screw from the handle joint.

Step 4



- Pry the black screw cover off the other side of the lower handle housing. This side will have the power switch located on it.

Step 5



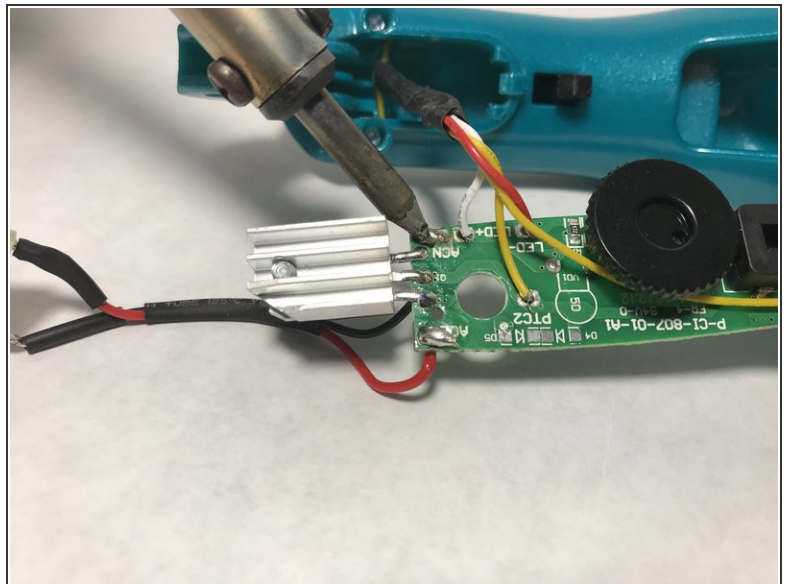
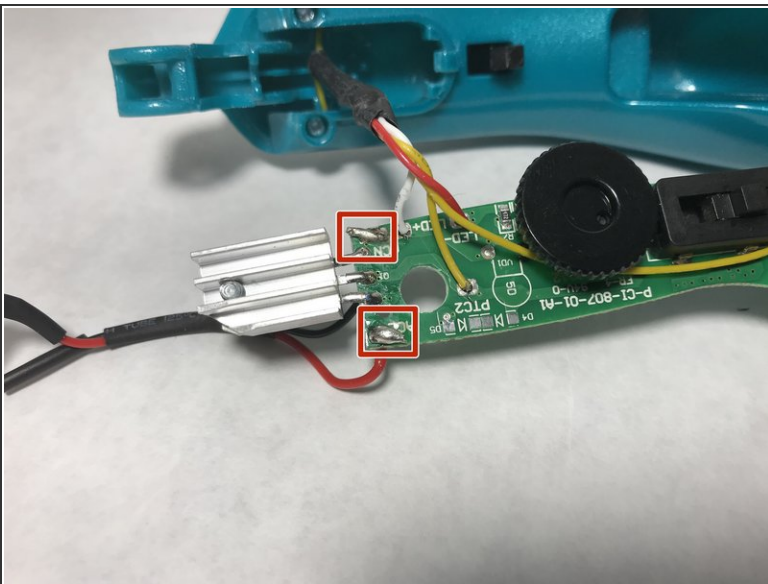
- Cut along the length of the black housing retainer with a rotary tool to split and remove the retainer.

Step 6



- Split the lower handle housing apart using a plastic opening tool.
- Begin splitting the housing at one end rather than the center to avoid cracking the casing.

Step 7 — Power Lead Connector



- Apply heat to both terminals of the power leads with a soldering iron. This will melt the solder so each power lead can be removed.
- Gently pull on each power lead to remove them from the circuit board.

To reassemble your device, follow these instructions in reverse order. Once each half of the housing have been put back together, install a new Housing Retainer to replace the one you cut off.