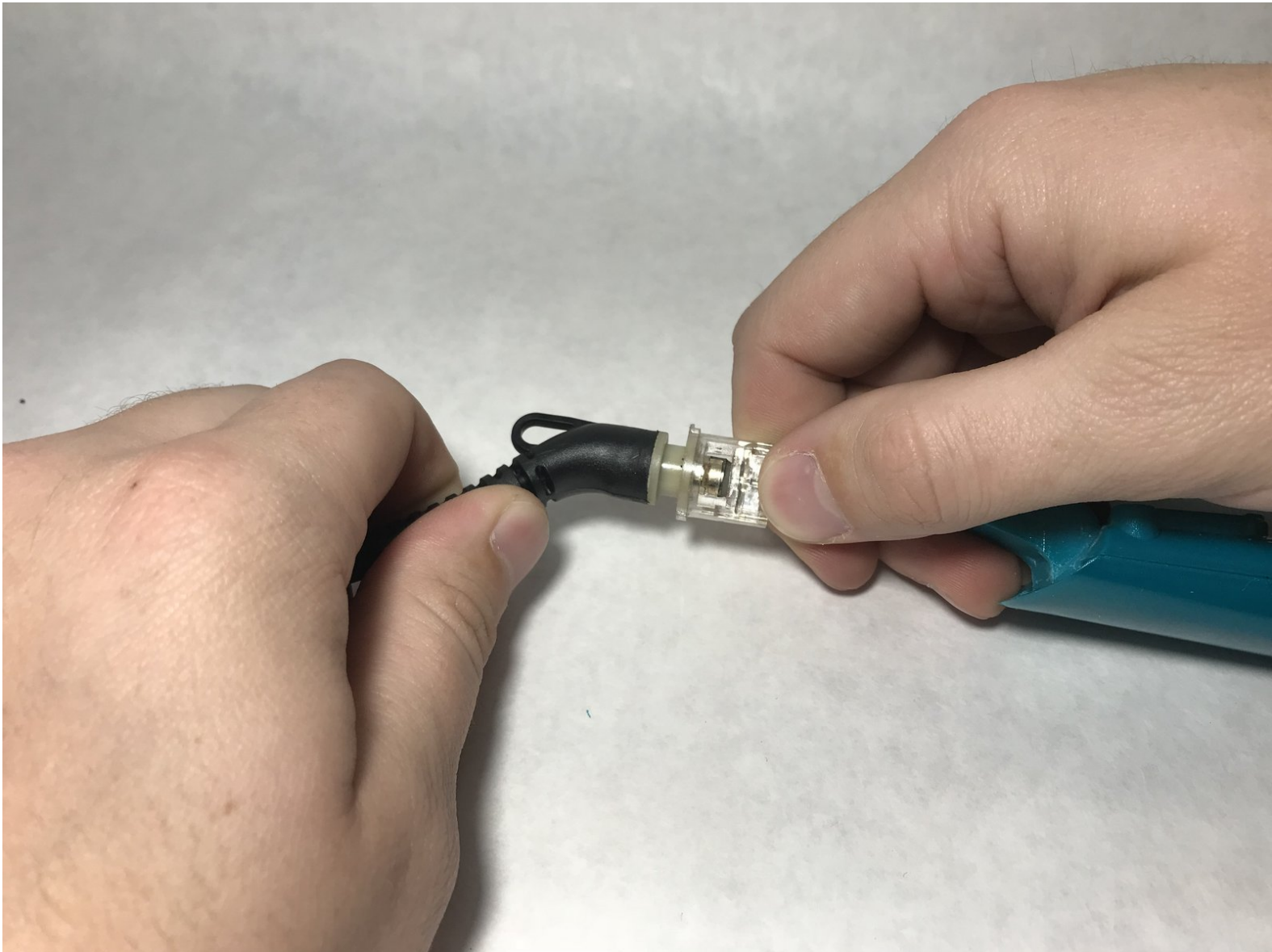




Bed Head Wave Artist Deep Waver Power Cord Replacement

Replace a cut or severed power cord to extend the usable life of your Deep Waver.

Written By: Grant Peters



INTRODUCTION

Use this guide to remove and replace the power cord from the power lead connector. It will show you how to split the lower handle housing to gain access to the power lead connector and other internal components. The lower handle housing must be split in order to replace the power cord without damaging it.



TOOLS:

- [Metal Spudger](#) (1)
- [Phillips #2 Screwdriver](#) (1)
- [Phillips #1 Screwdriver](#) (1)
- [Rotary Tool](#) (1)




PARTS:

- [Housing Retainer](#) (1)

Step 1 — Lower Handle Housing



 Before disassembling your Deep Waver, be sure to unplug the device to avoid electric shock, and make sure the heating elements of the device are cool to avoid burns.

- Unlock the handle of your Deep Waver to gain access to the screws you need to remove.
- Remove two 10 mm Phillips #01 screws from the lower handle housing.
- Remove one 10 mm Phillips #02 screw from the lower handle housing.

Step 2



- Pry the black screw cover off the side of the lower handle housing using a fine-point spudger or pick. This side will have the model number and other product information embossed on it.

Step 3



- Remove one 10 mm Phillips 1 screw from the handle joint.

Step 4



- Pry the black screw cover off the other side of the lower handle housing. This side will have the power switch located on it.

Step 5



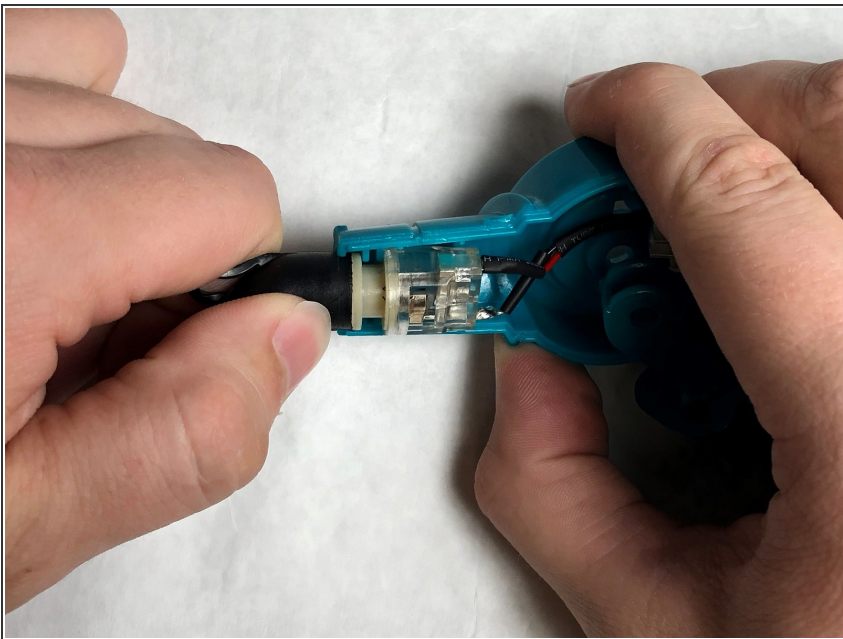
- Cut along the length of the black housing retainer with a rotary tool to split and remove the retainer.

Step 6



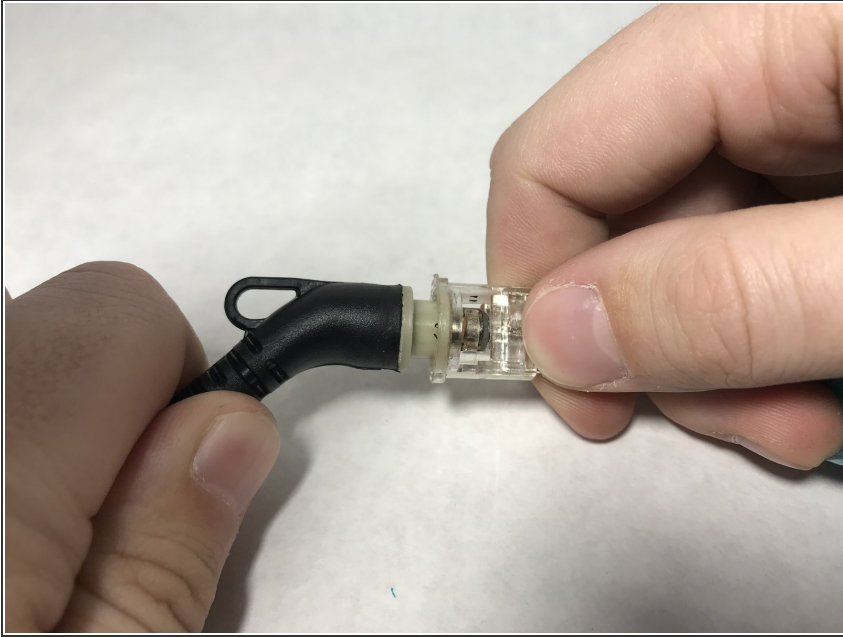
- Split the lower handle housing apart using a plastic opening tool.
- Begin splitting the housing at one end rather than the center to avoid cracking the casing.

Step 7 — Power Cord



- Pull upward on the power cord connector to remove it from the lower handle housing.

Step 8



- Gently pull the power cord out of the power lead connector.

To reassemble your device, follow these instructions in reverse order. Once each half of the housing have been put back together, install a new Housing Retainer to replace the one you cut off.