



Mio ALPHA 2 Battery Replacement

Changing the battery to fix if the watch doesn't stay charged.

Written By: David Soder



INTRODUCTION

If your Mio ALPHA 2 heart rate monitor watch is not keep charge, it is a good possibility that the battery is bad. In this guide, you will learn on how to replace the battery. Before starting, you will need small tools to open up the watch in able to replace the battery. Also, there will be small parts associated with the watch that can be lost and might be difficult to replace.



TOOLS:

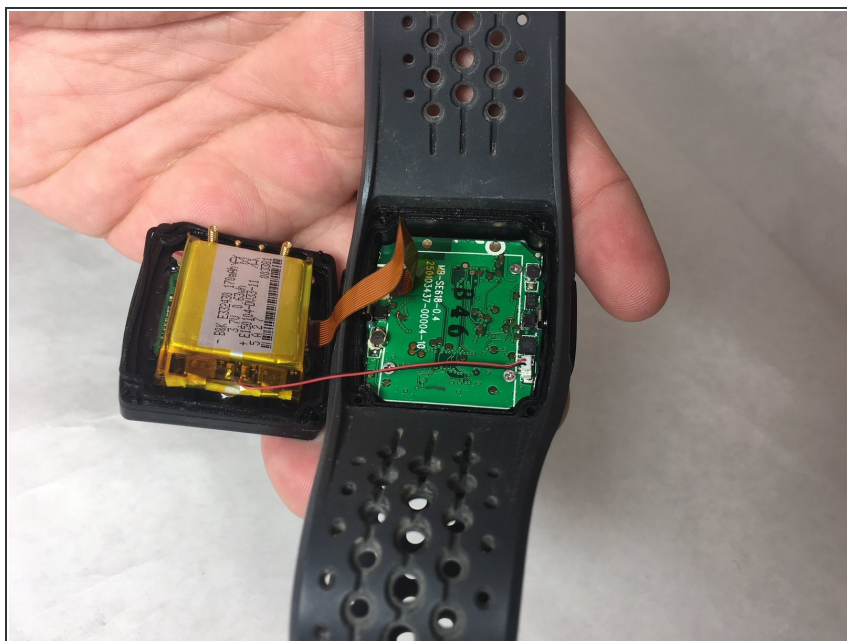
- [Phillips #00 Screwdriver](#) (1)
 - [Tweezers](#) (1)
-

Step 1 — Battery



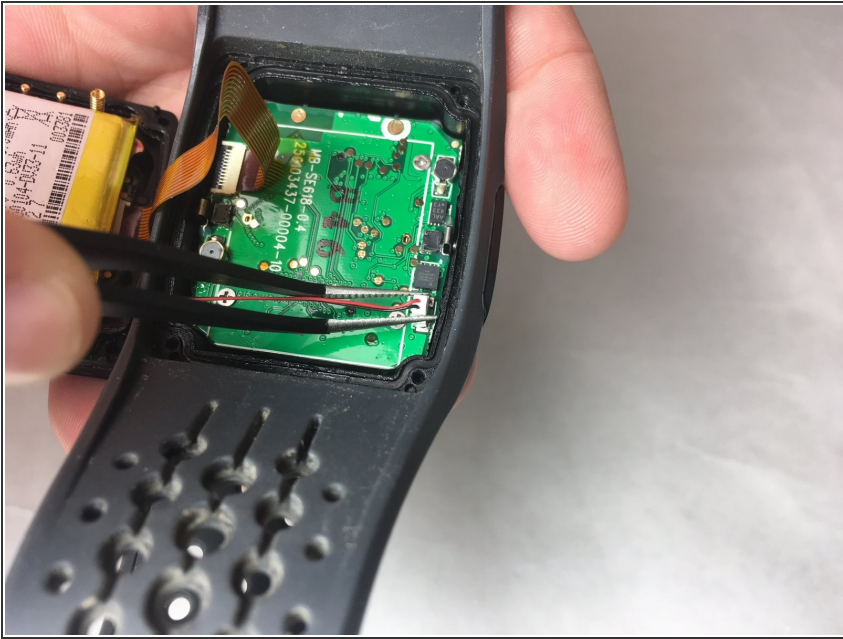
- Remove the 4 JIS 00 6.71 mm screws.

Step 2



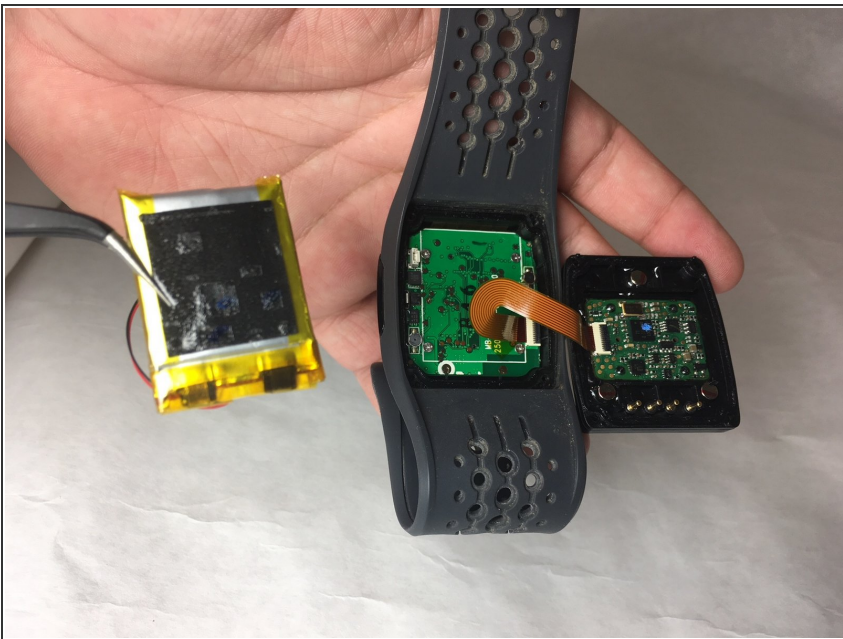
- Pull off the back cover of the watch after the 4 screws are removed from the first step.
- Be careful not to remove the Data Strip (Brown Strip) from either chip.

Step 3



- Use some tweezers to remove the small white clip for the battery from the circuit board.

Step 4



- Slowly peel the battery off from the back cover of the watch.
- There is double sided tape on the back side. Make sure to not tear up the tape. If the double sided tape is not reusable, replace with new tape.