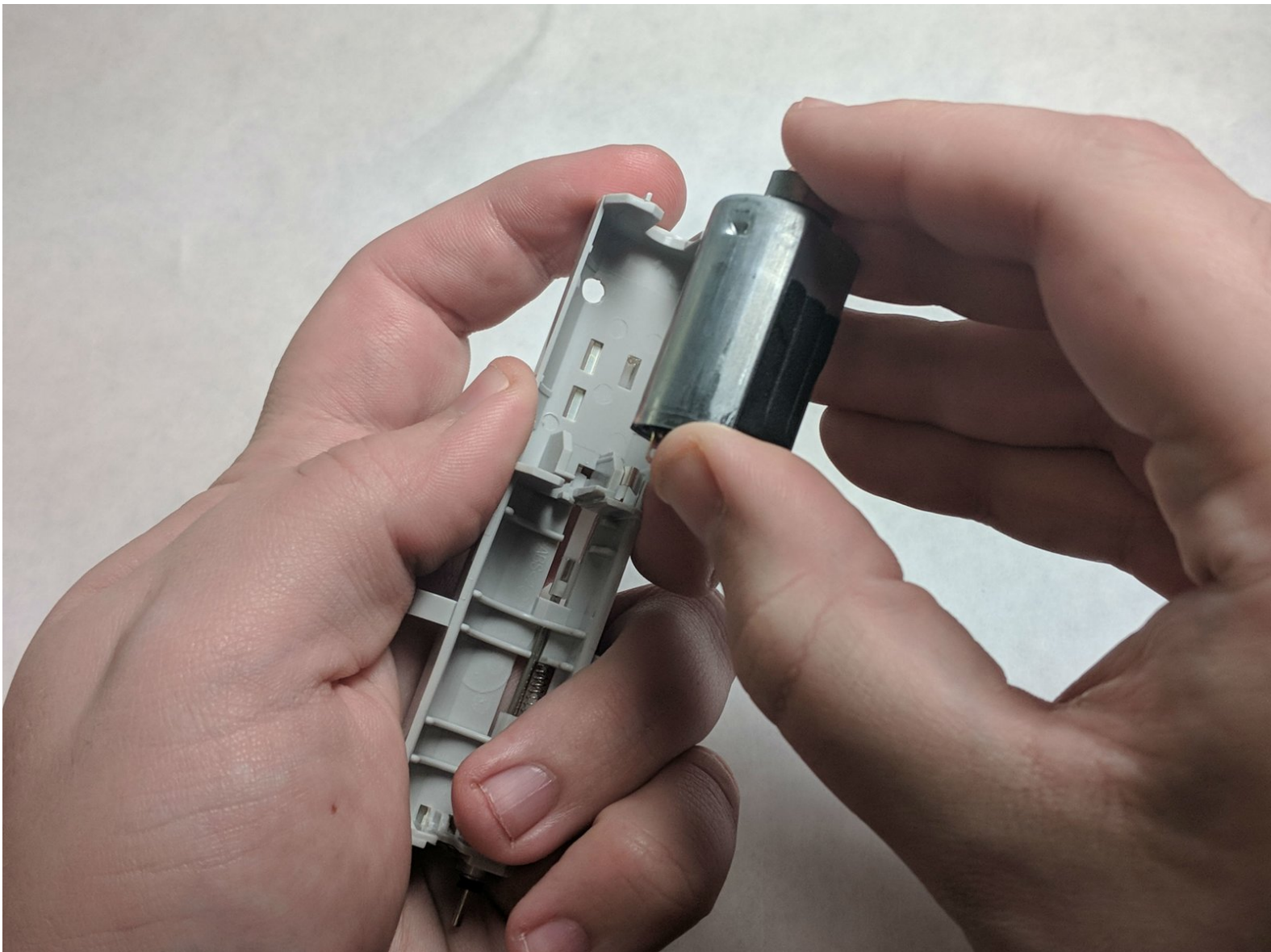




Panasonic ES2207P Motor Replacement

Removal and replacement of the motor.

Written By: Kevin Marvell



INTRODUCTION

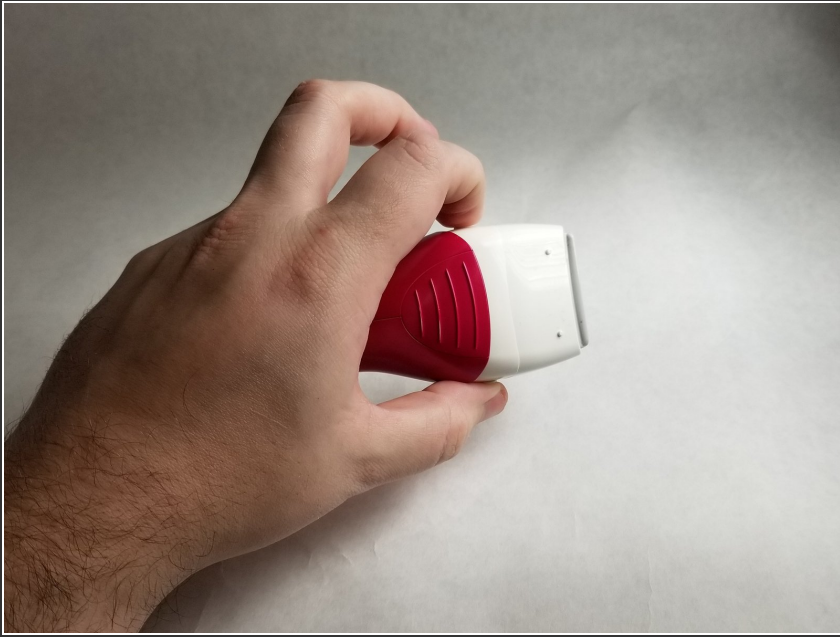
Motors may burn out or the eccentric may break/disappear. This is how to replace the motor.



TOOLS:

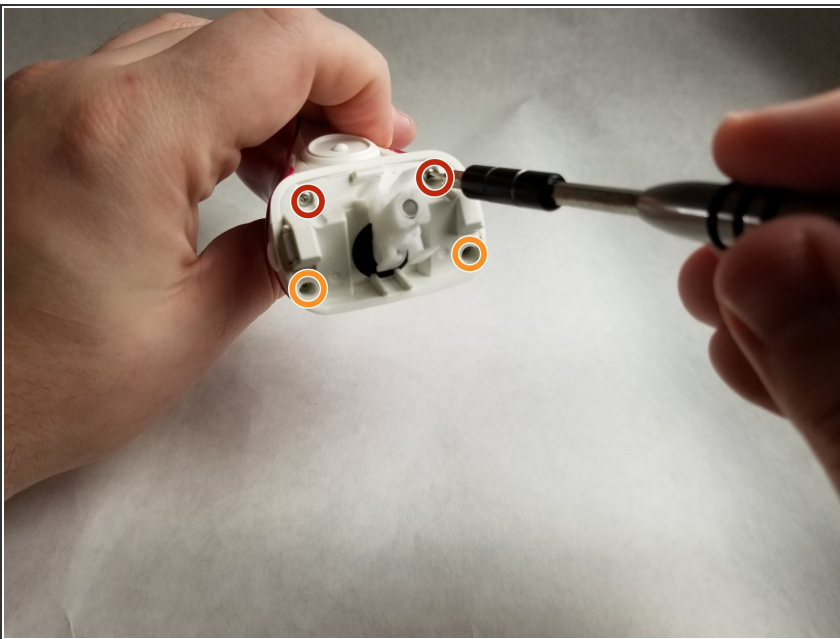
- [Phillips #0 Screwdriver](#) (1)
 - [Spudger](#) (1)
-

Step 1 — Battery



- Remove foil head and blades.

Step 2



- Remove (2) 7.9mm Phillips #0 screws.
- Remove (2) 14.3mm Phillips #0 screws.

Step 3



- Push the blade mount assembly towards the rear of razor and remove.

Step 4



- ⓘ Be careful not to break any tabs that hold the panels to the body.
- Remove both external panels using spudger if necessary.

Step 5



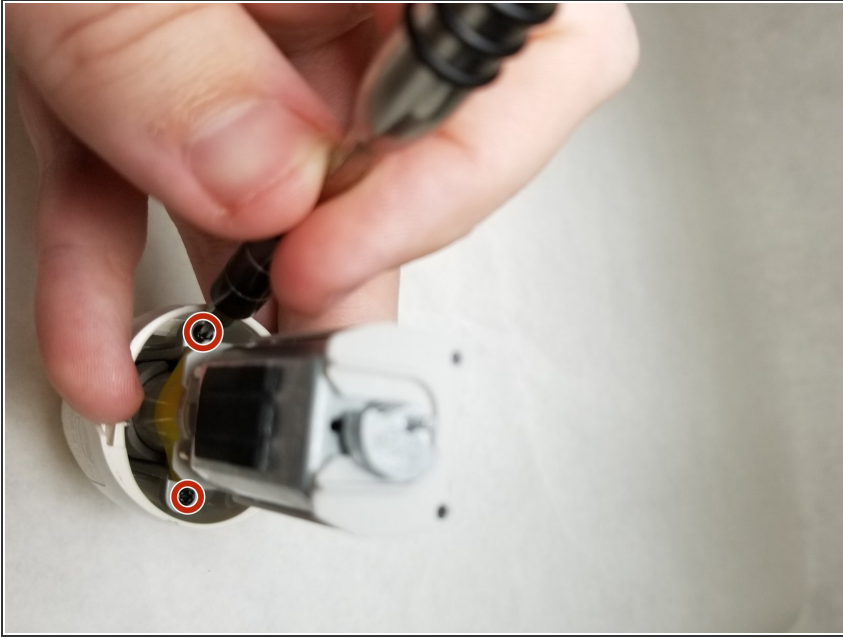
- Remove (2) 7.9mm Phillips #0 screws.

Step 6



- ⓘ This step may require a fair amount of force due to the O-ring.
- Pull to separate the end-cap from the body.

Step 7



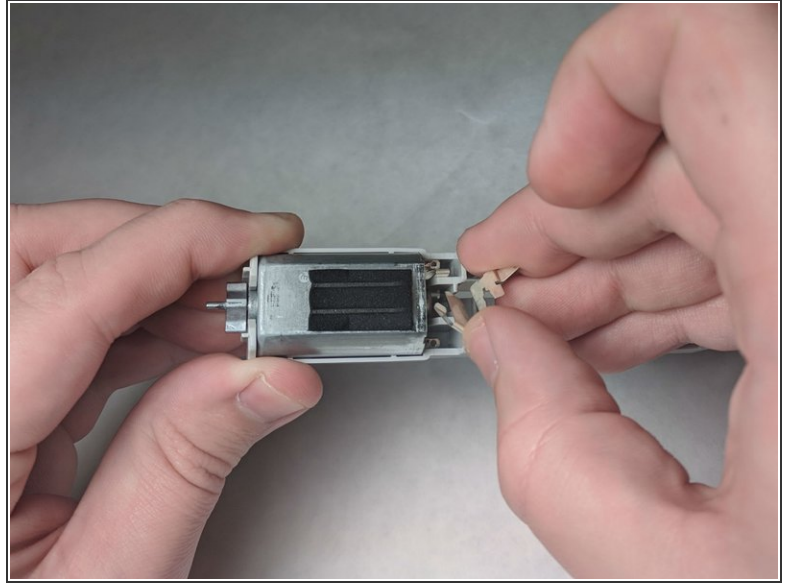
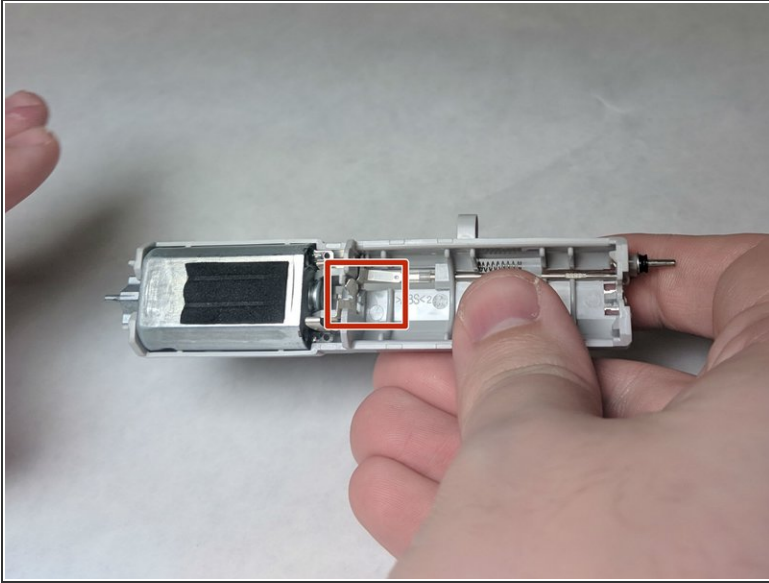
- Remove (2) 7.9mm Phillips #0 screws and remove endcap from frame.

Step 8



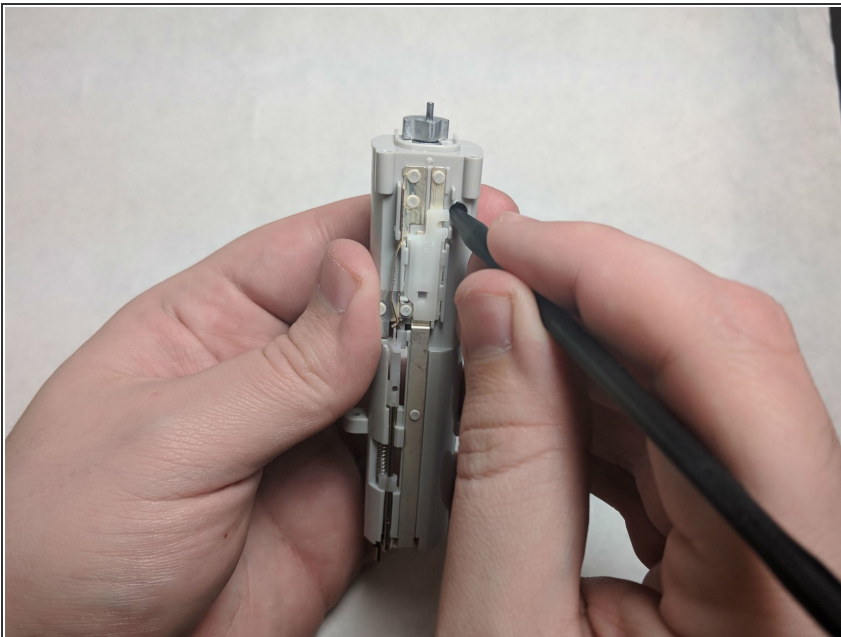
- Push forward on the lower terminal to remove the battery from the frame.

Step 9 — Motor



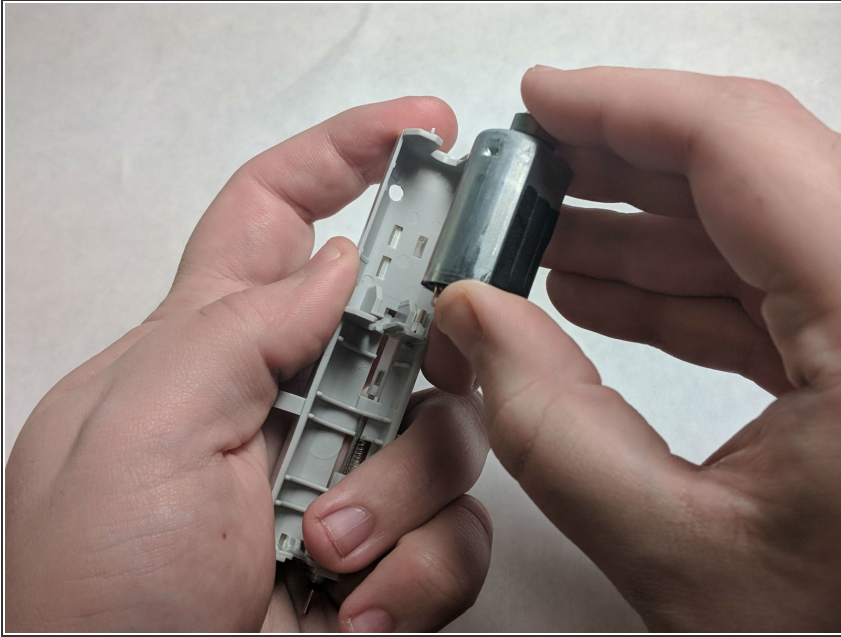
- Remove battery contact.

Step 10



- Using pointed end of spudger, push on the motor through the hole in the back

Step 11



- Use your fingers to finish removing motor from frame.

To reassemble your device, follow these instructions in reverse order.