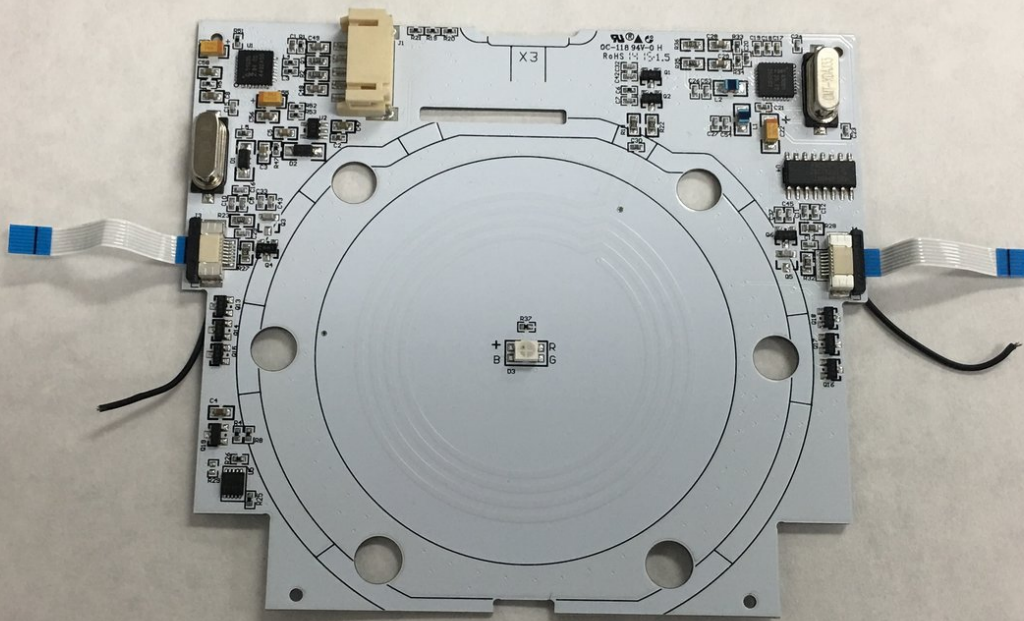




# Lego Dimensions Starter Pack Motherboard Replacement

Replace the motherboard from your toy pad, which connects all the major components of the device.

Written By: Alyssa Lach



# INTRODUCTION

The motherboard connects all the components of the toy pad to allow the device to function properly. The motherboard may need to be replaced if the toy pad is not working. This guide will show how to remove the motherboard.



## TOOLS:

- [Metal Spudger](#) (1)
  - [Soldering Iron](#) (1)
  - [Solder](#) (1)
-

## Step 1 — Top Cover Parts



⚠ Be careful not to crack the cover.

- Use the metal spudger to gently pry open the corners of the top cover.

## Step 2



⚠ Be careful not to crack the top cover.

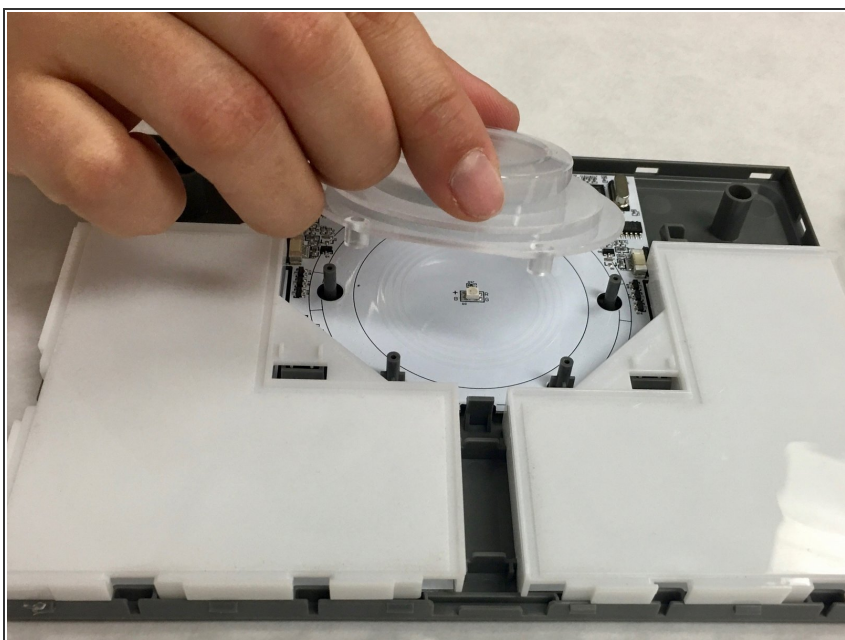
- Use the metal spudger to gently pry up the center of the top cover.

### Step 3



- Pull the top cover off.

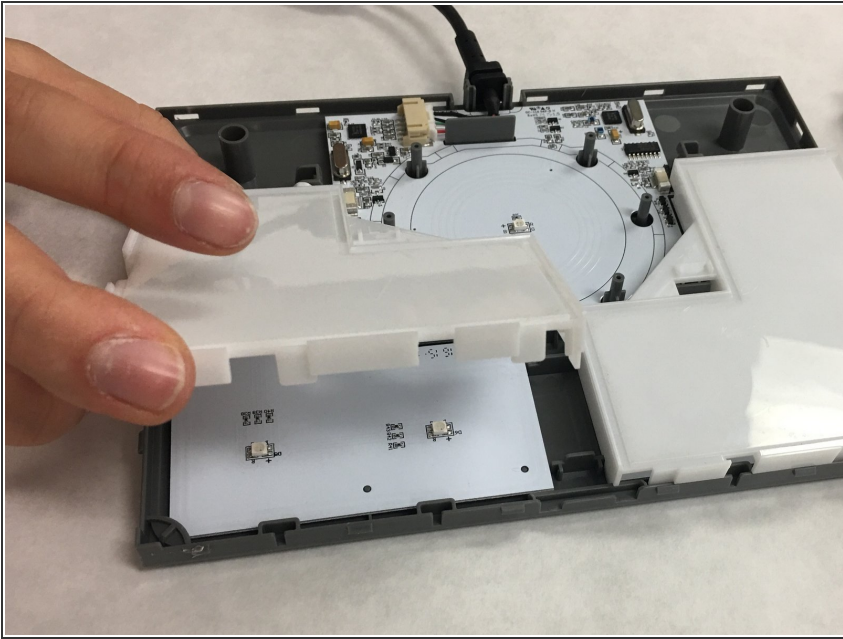
### Step 4



- Lift up the circular illumination stand and remove it from the toy pad.

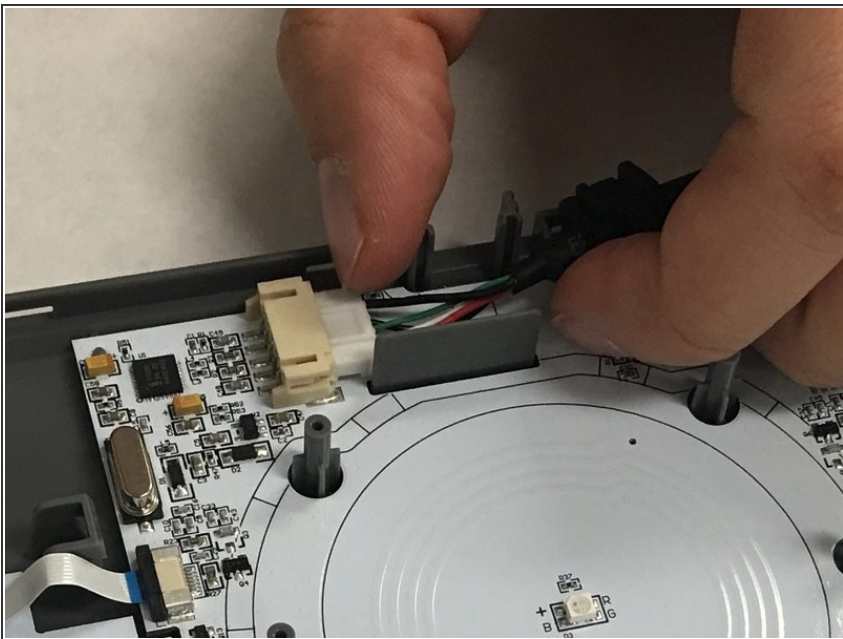


## Step 5



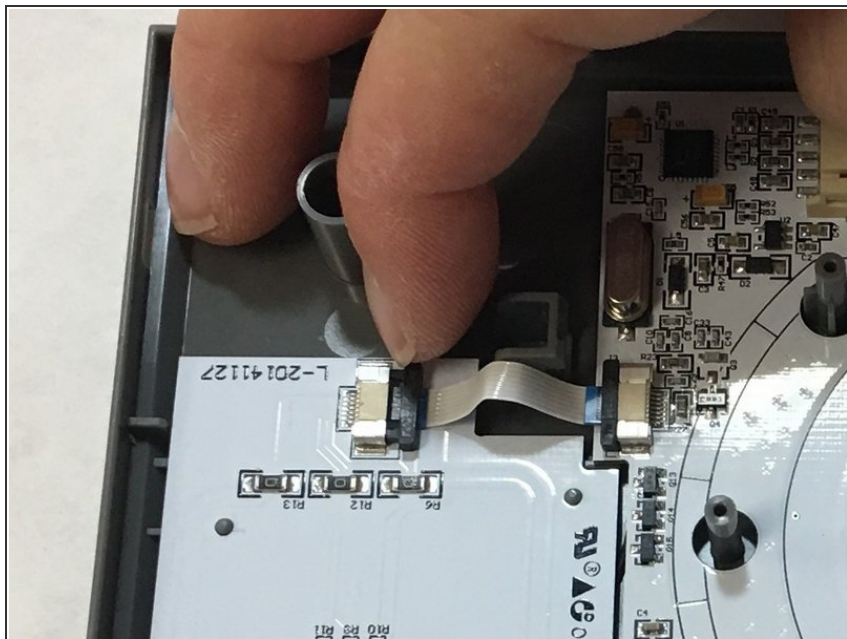
- Lift up the white L-shaped pieces and remove them from the toy pad.

## Step 6 — USB Cable



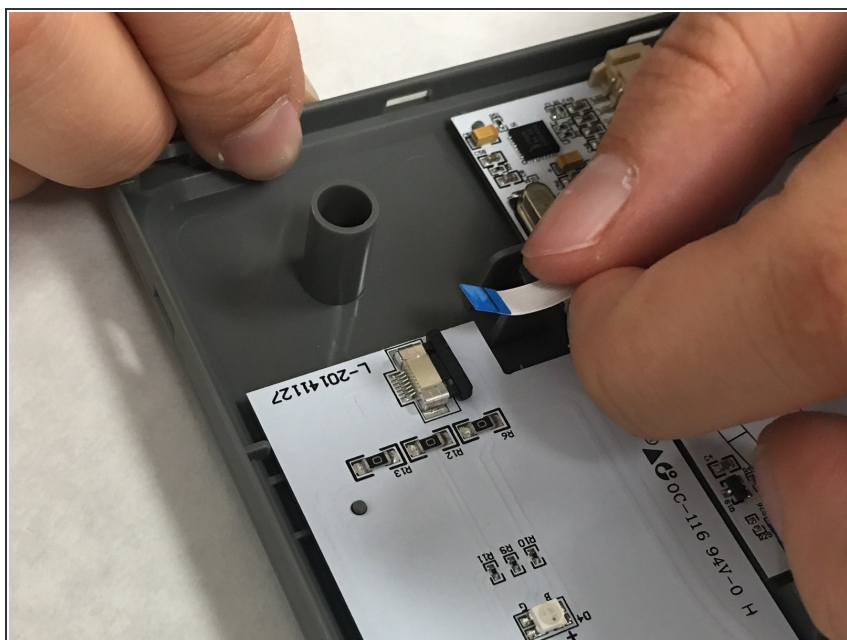
- Pull the white connector away from the motherboard, keeping the white connector parallel to the board.
  - ⓘ You may need to use a plastic opening tool or spudger to help separate the connector. Avoid pulling firmly on the wires themselves.
- Remove the USB cable from the toy pad.

## Step 7 — LED Chip



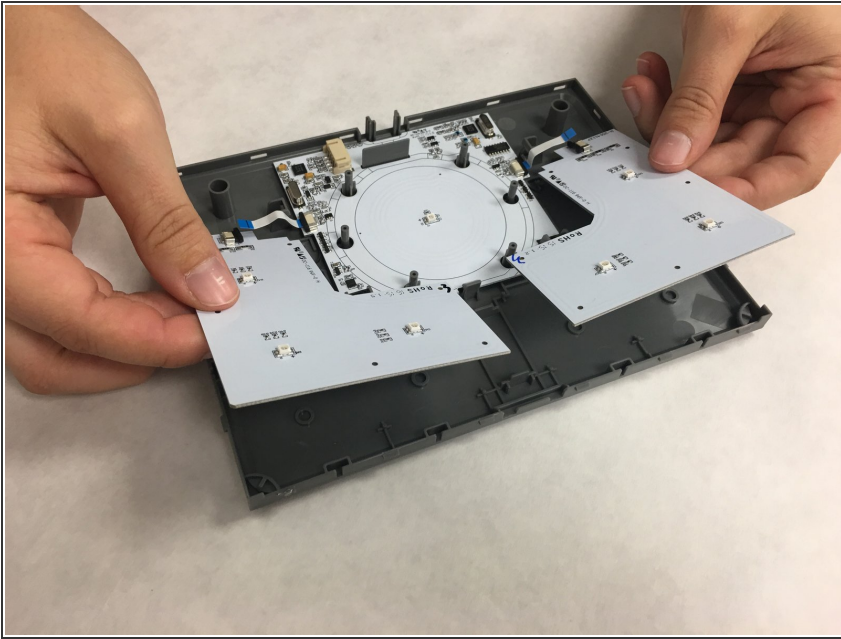
- Pull the black connector of the ribbon away from the LED chip, keeping the connector parallel to the board.
- Disconnect the connector on the other LED chip as well, if replacing both LED chips or the motherboard

## Step 8



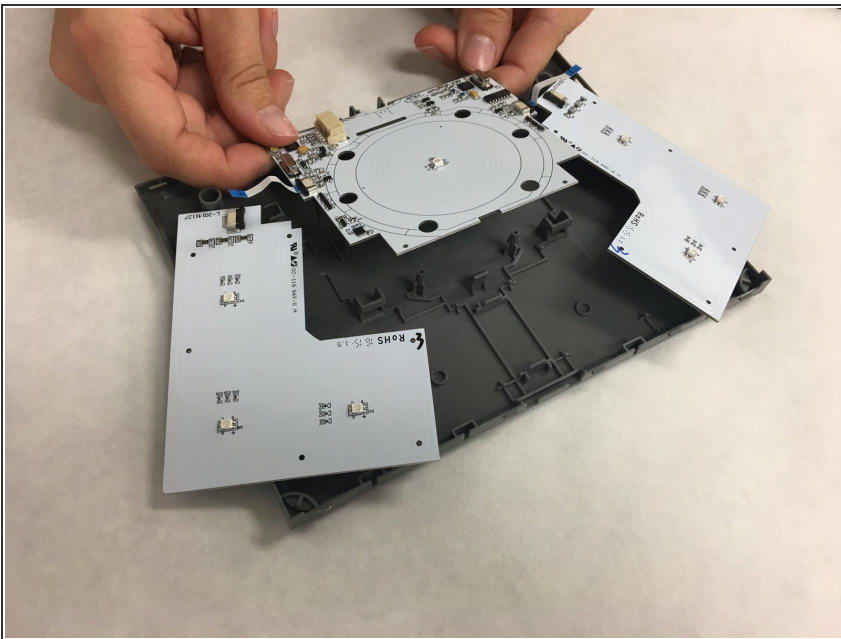
- Pull the ribbon away from the black connector of the LED chips.
- Disconnect the ribbon from the other LED chip as well, if replacing both LED chips or the motherboard.

## Step 9



- Lift up both LED chips. As you are lifting, pull towards the motherboard to release it from the toy pad cover.

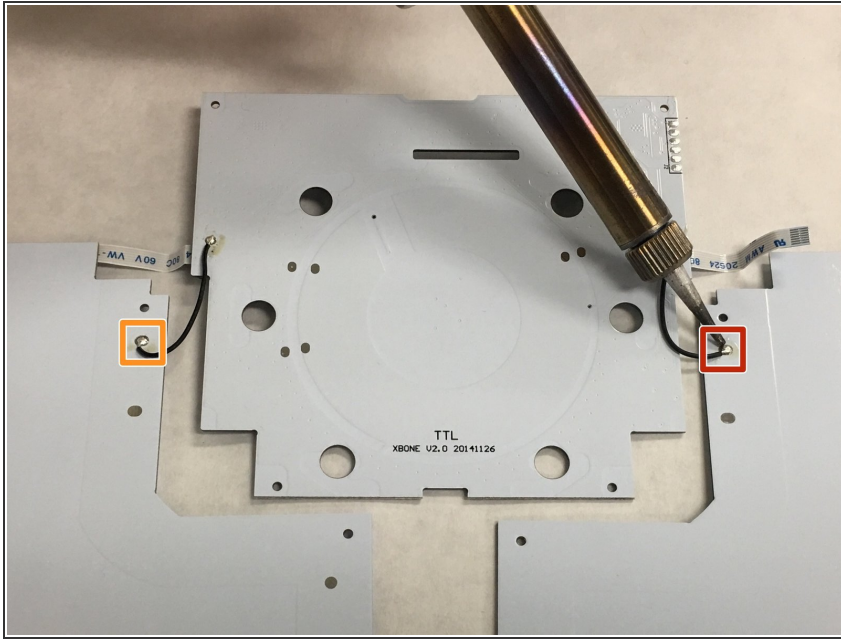
## Step 10



- Lift up the motherboard, and remove the motherboard and LED chips from the toy pad.

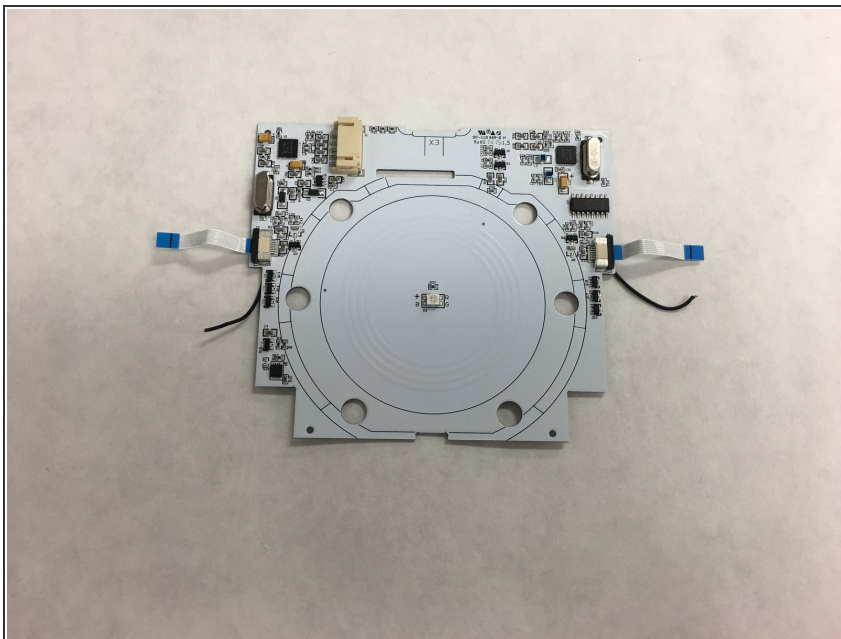


## Step 11



- Flip the motherboard and LED chips over.
- Desolder the LED chip from the motherboard.
- Desolder both LED chips, if replacing both LED chips or the motherboard
- Separate the LED chip(s) from the motherboard.
- ❗ Refer to [this guide](#) for soldering and desoldering tips.

## Step 12 — Motherboard



- Separate the motherboard from both LED chips.

To reassemble your device, follow these instructions in reverse order.