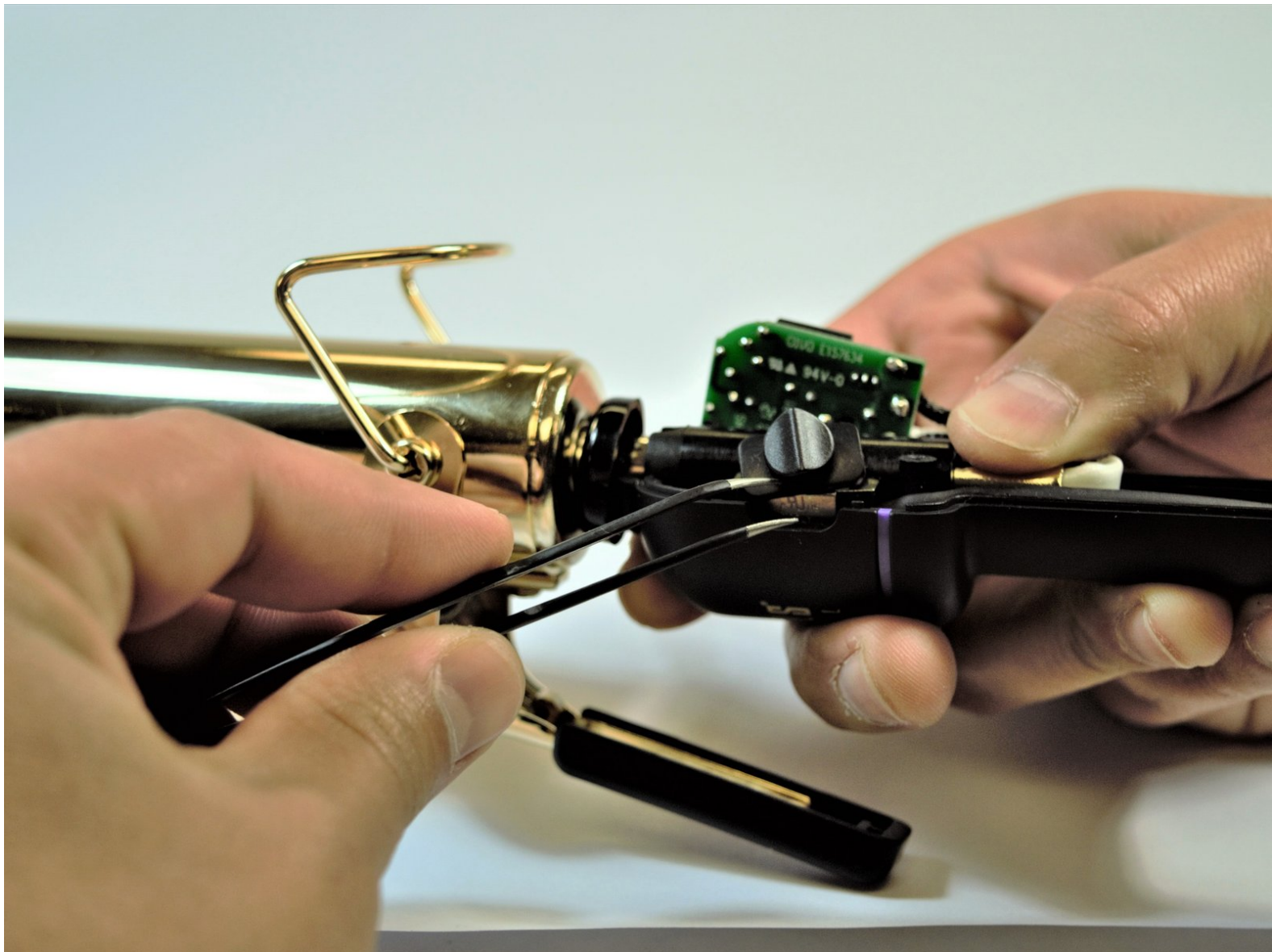




Hot Tools Professional 1110 Power Switch Replacement

This guide will outline the appropriate steps to replace the Hot Tools Professional 1110 power switch.

Written By: Dustin Ortega



INTRODUCTION

Before beginning any of the following power switch replacement steps ensure that the device is not plugged into a power source, wear proper eye protection, and conduct the procedure in a well ventilated area.



TOOLS:

- [Tweezers](#) (1)
- [Phillips #1 Screwdriver](#) (1)
- [Phillips #2 Screwdriver](#) (1)
- [Soldering Workstation](#) (1)



PARTS:

- [Hot Tools Professional 1110 Power Switch](#) (1)

Step 1 — Hot Tools Professional 1110 Disassembly



- Ensure that you have a clean work station, and that you can easily keep track of small, loose parts.
- In addition, **MAKE SURE IT IS UNPLUGGED FOR ALL FOLLOWING STEPS!**

Step 2



- Firmly grasp the end of the Iron with the black plastic cap on the heating element end.
- With your free hand, use tweezers to firmly grasp the small retaining ring sitting between the heating element and the handle body.
- Once you have a firm grasp, pull up on the retaining ring, and it should come loose.

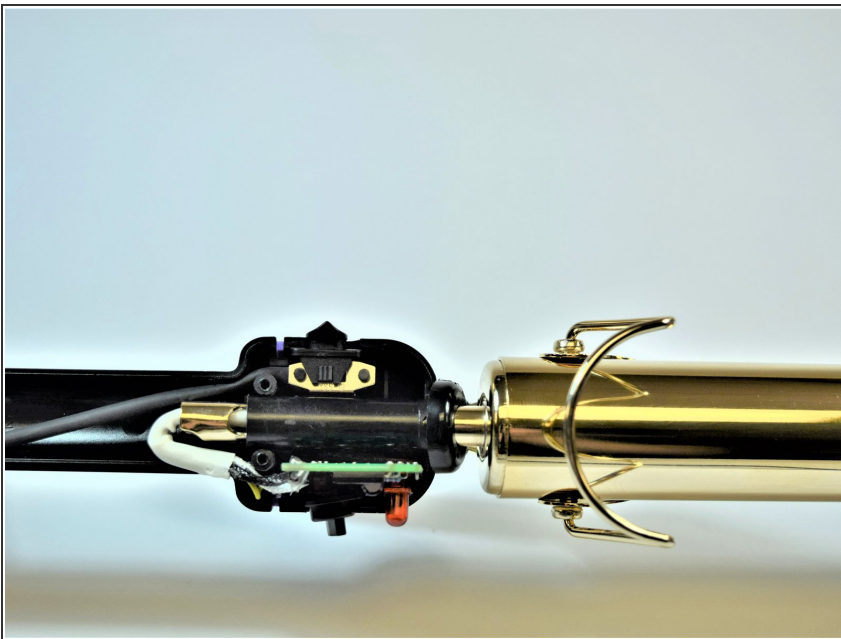
This document was generated on 2020-11-28 06:18:35 AM (MST).

Step 3



- With the ring loose, turn the handle body over, and you will see three screw holes.
- Take a PH1 screwdriver, and loosen up all three 6mm Phillips #1 screws in the handle body.

Step 4



- Once the screws have been removed, set them aside and with a pry tool, firmly pull the handle body apart in half lengthwise.

Step 5



- For removing the clamping mechanism, firmly grasp the iron in your hand by the handle body, and locate the screw as shown in the picture.
- Remove the screw shown (8mm Phillips #2 Pan Head) and when finished do the same for the opposite side.

Step 6



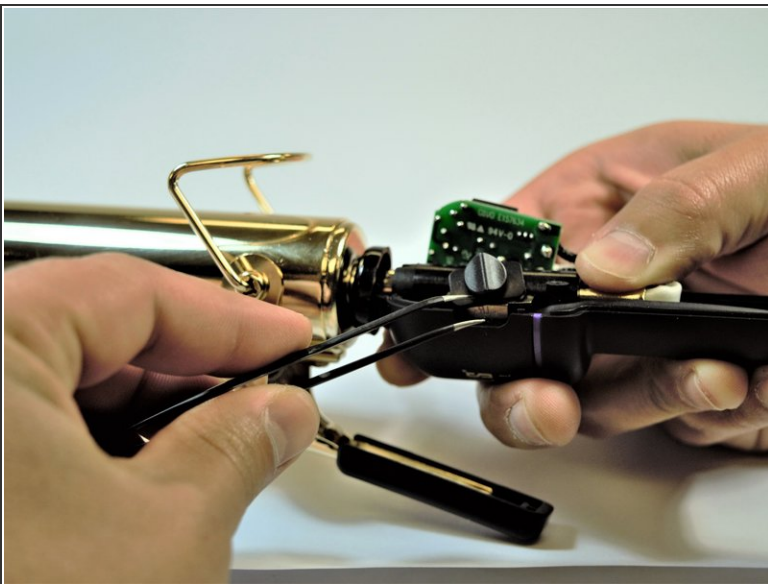
- Once both screws have been removed, continue to remove the top clamping half of the mechanism from the body of the Iron.

Step 7



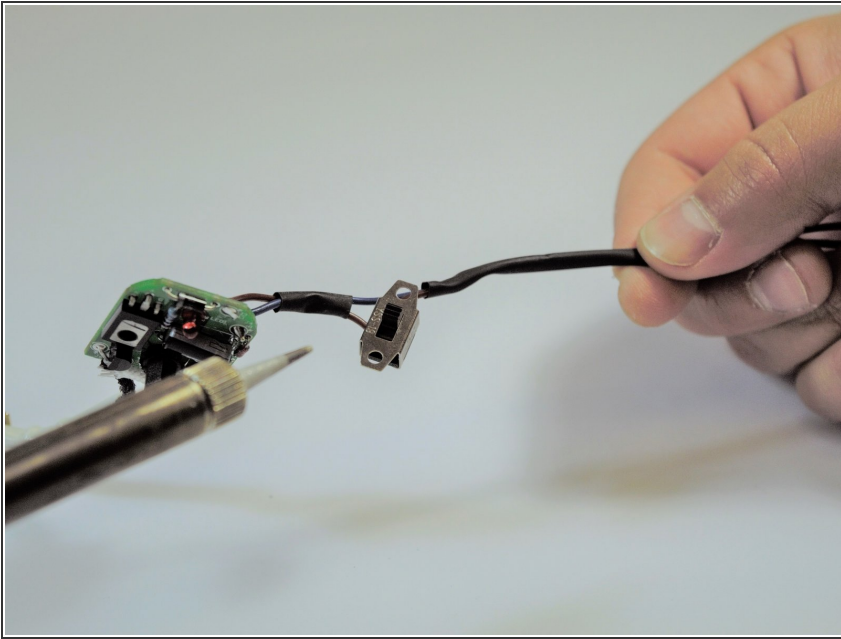
- Rotate the handle, and remove the screw that holds on the spring mechanism for the clamp. This screw is a 8mm Phillips #2 Pan Head.
- Once this step is fished your Hot Tools Professional 1110 will be fully disassembled and ready to have its components replaced.

Step 8 — Power Switch



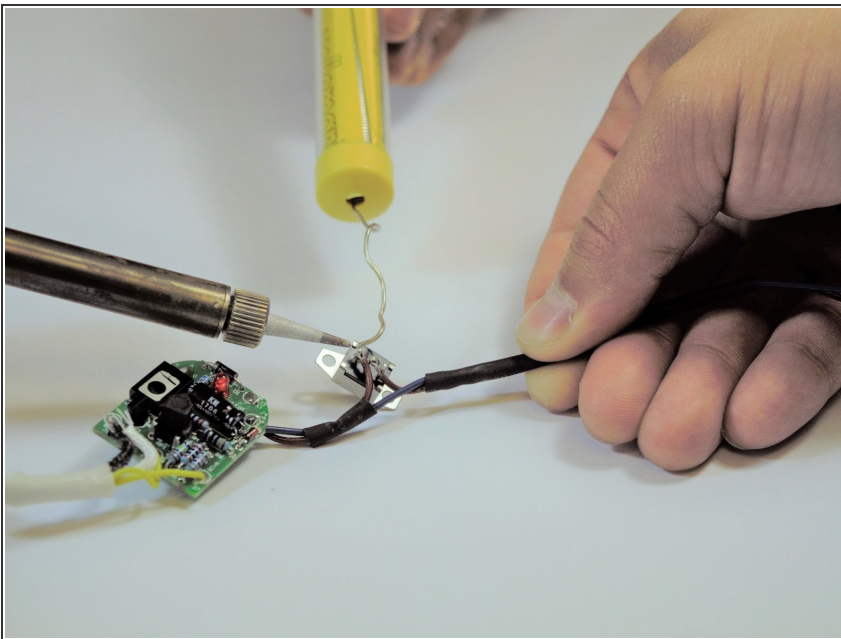
- Remove the power switch button exposing the electrically connected power switch.

Step 9



- Remove power switch from the housing and desolder the three connected electrical wires. Take note of the orientation of each of the electrical wires to ensure that they are replaced correctly.

Step 10



- ☑ Ensuring that the three connecting electrical wires are in the correct orientation, solder the new power switch to the wires.

To reassemble your device, follow these instructions in reverse order.