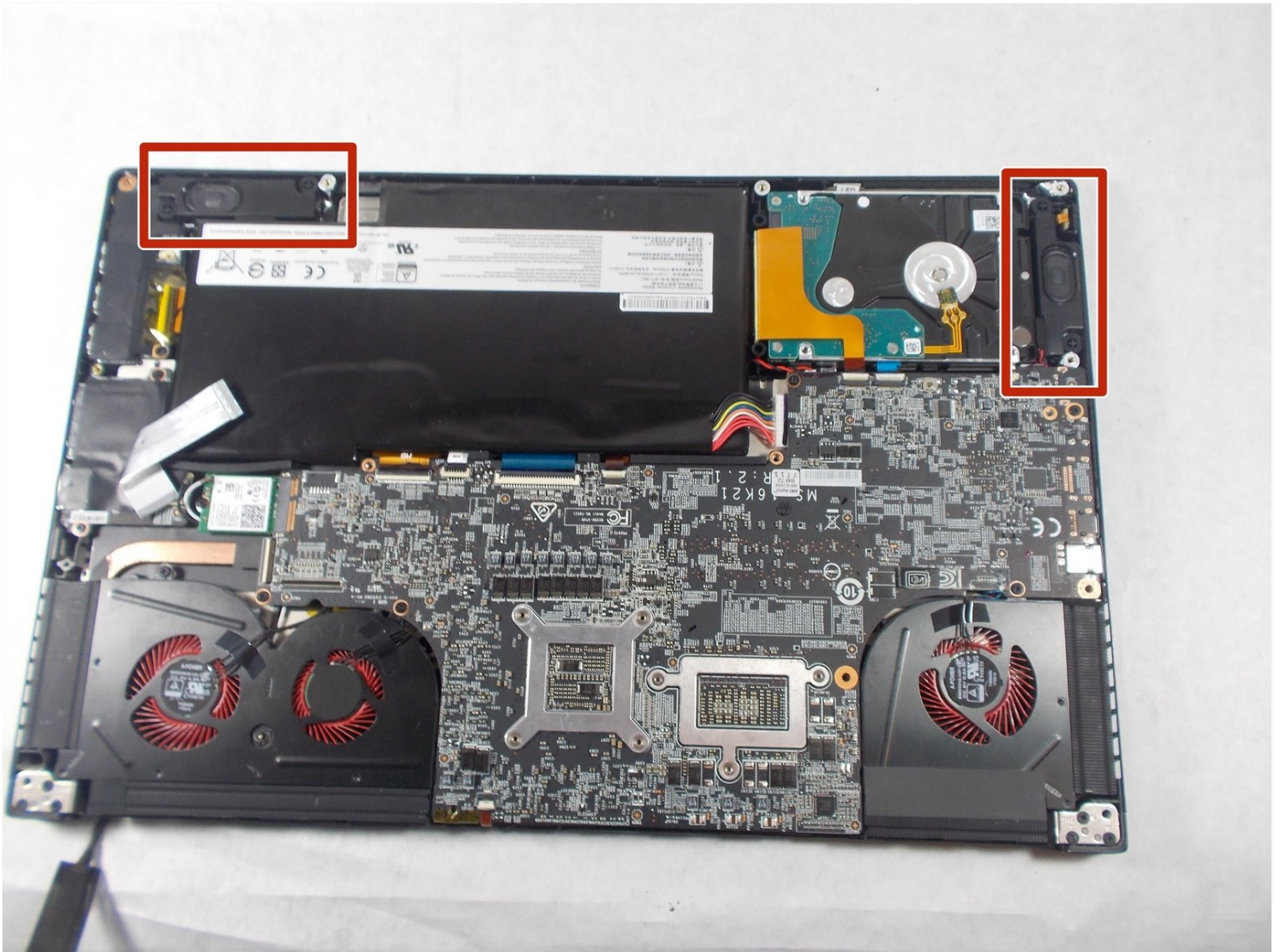




MSI GS63VR 7RF Stealth Pro Speakers Replacement

One of the most common complaints about this...

Written By: Nicholas Perry



INTRODUCTION

One of the most common complaints about this device is that the speakers malfunction. If this happened to you too, here is how you can replace your broken speaker.

TOOLS:

Spudger (1)

Phillips #1 Screwdriver (1)

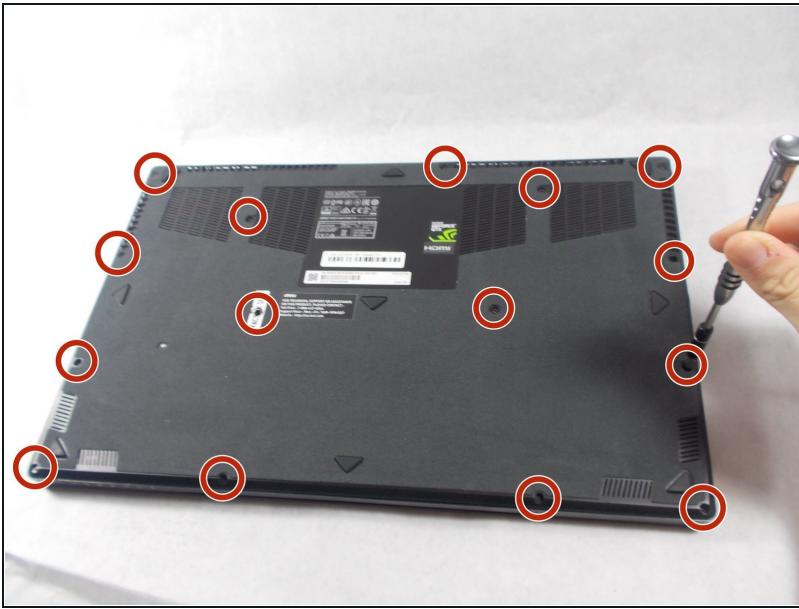
Tweezers (1)

Step 1 — Battery



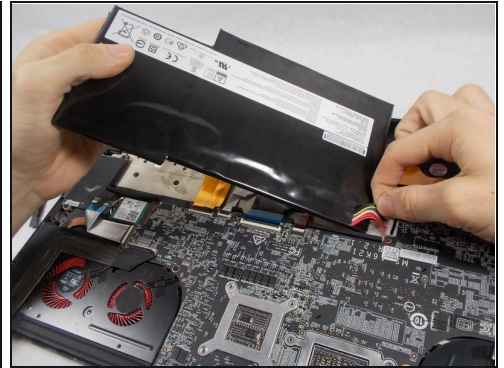
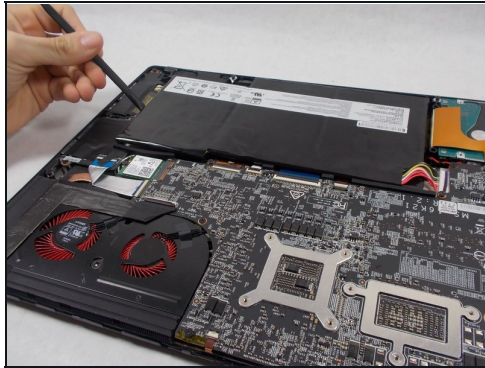
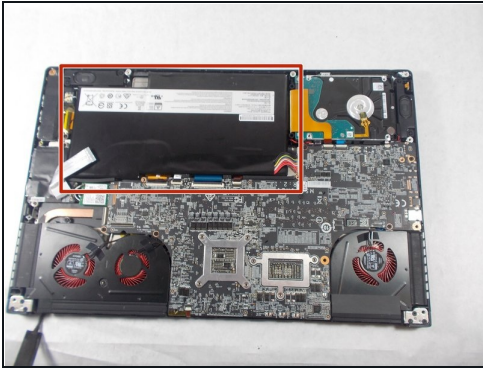
- Use the spudger to separate the back plate from the rest of the computer with the screen up like in the picture.
- Once the back plate is loose, close the screen for an easier time properly removing it.

Step 2



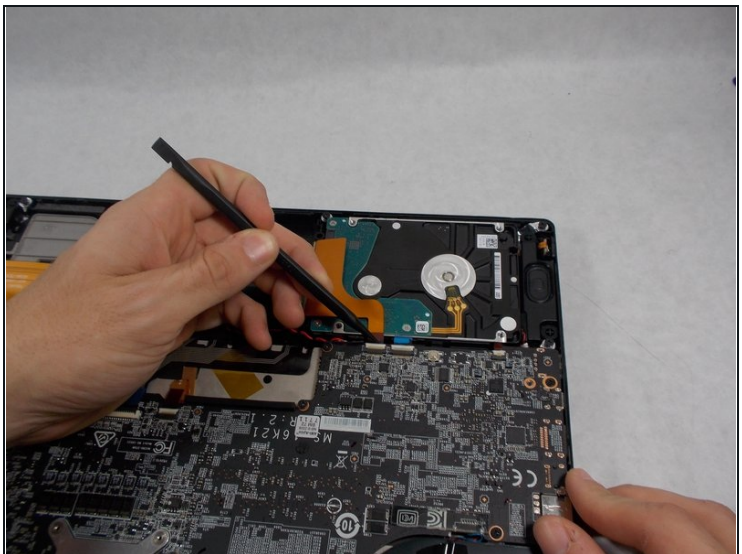
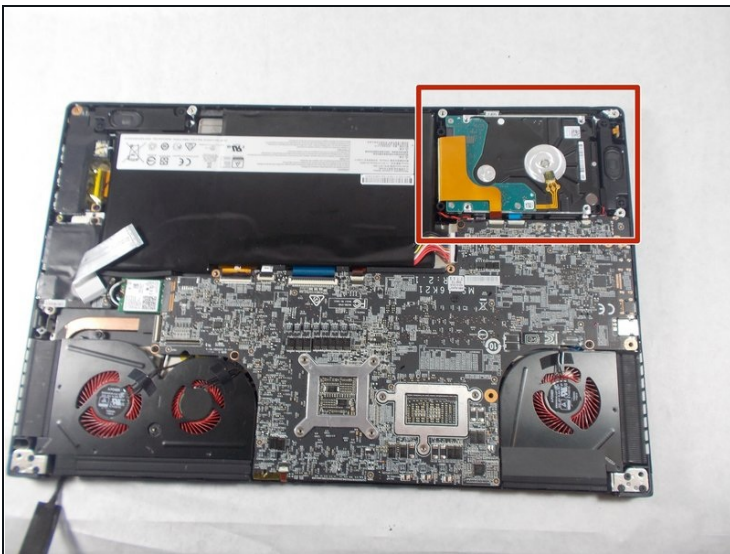
- Using a Phillips Head #1 screwdriver, unscrew the 15 screws on the bottom of the device
 - After all the screws are unscrewed, remove the bottom plate. If this is the first time that you are removing this back cover, the last screw is hidden under the "factory seal" label. You will need to break that label to reach that screw.
- ① Keep track of all the screws and which slot they came from, as they slightly differ. We recommend this system: lay out on a piece of paper and pretending the paper is the device. Place the screws on the paper approximately where they would go.
- ① Another method for keeping track of all the screws would be to secure each removed screw near the hole that it was removed from with a piece of painters or masking tape. This type of tape is easy to remove from the fuzzy surface but strong enough to secure the screw to the back cover.

Step 3



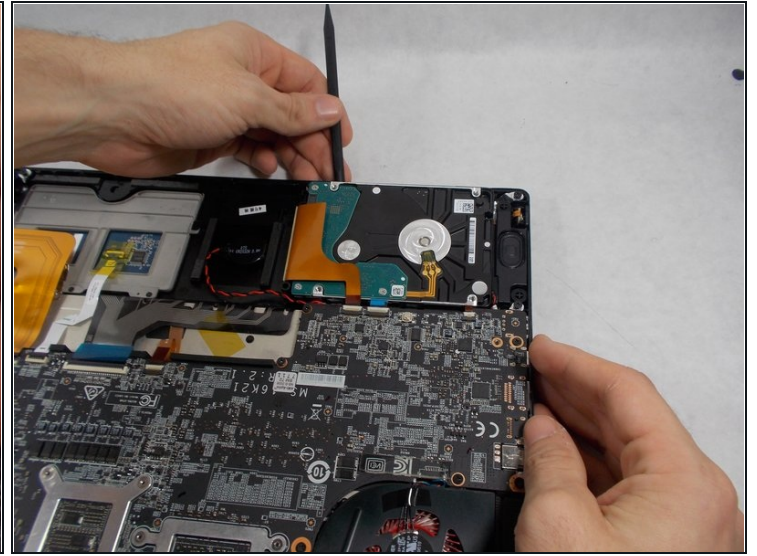
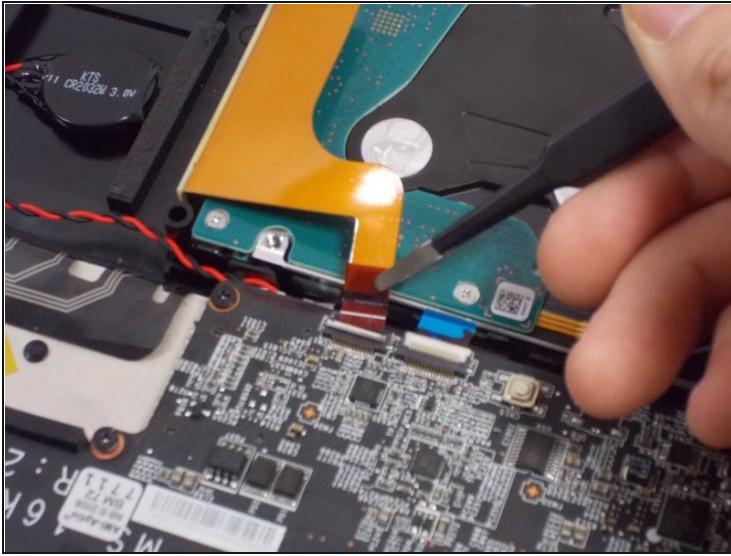
- Locate the battery.
 - Wedge the spudger underneath the battery, and apply pressure to lift it away from the rest of the device.
 - Gently pull and wiggle the multiple colored wired connector out from the socket.
- ⓘ If you are removing the original battery, the back has a couple foam strips that were installed for cushioning. Those can be carefully removed and placed on the new replacement battery, but it is not necessary.

Step 4 — Hard Drive



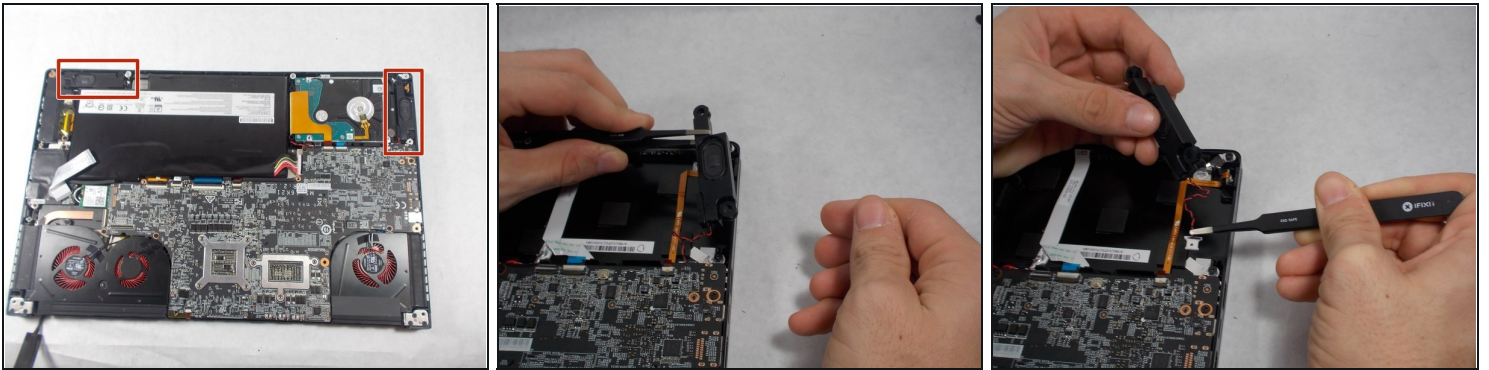
- Locate the hard drive.
- Using a spudger lift the ribbon cable connector.

Step 5



- Use the [tweezers](#) to lift the back tab and pull it back until the ribbon cable disconnects.
- Wedge the spudger between the hard drive and the device and apply pressure to pry the two apart, and then remove the hard drive.

Step 6 — Speakers



- First locate the speaker(s).
 - Use the [tweezers](#) to lift the speaker from its position.
 - Grab the multi-colored wire with the tweezers and gently pull back until the speakers releases from its socket.
- ⓘ Applies for both speakers.
- ⚠ Keep track of which speaker went where. The connectors for the speakers are unique; you cannot use a speaker that should go on the right side on the left side and vice versa.

To reassemble your device, follow these instructions in reverse order.