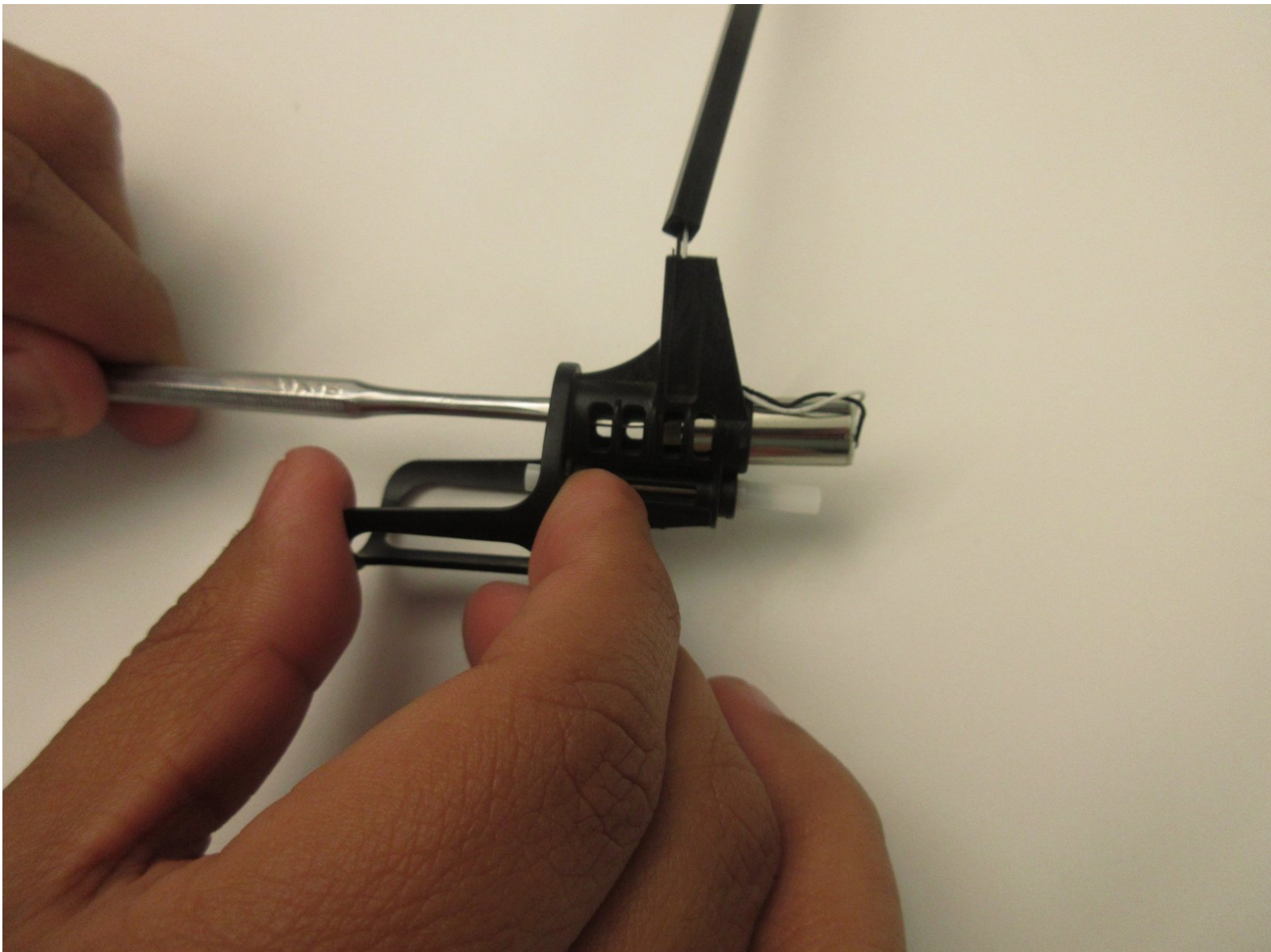




# Carrera Mario Copter Motor Replacement

Replace any of the four motors on the quadrocopter.

Written By: Edgar Lopez-Allende



## INTRODUCTION

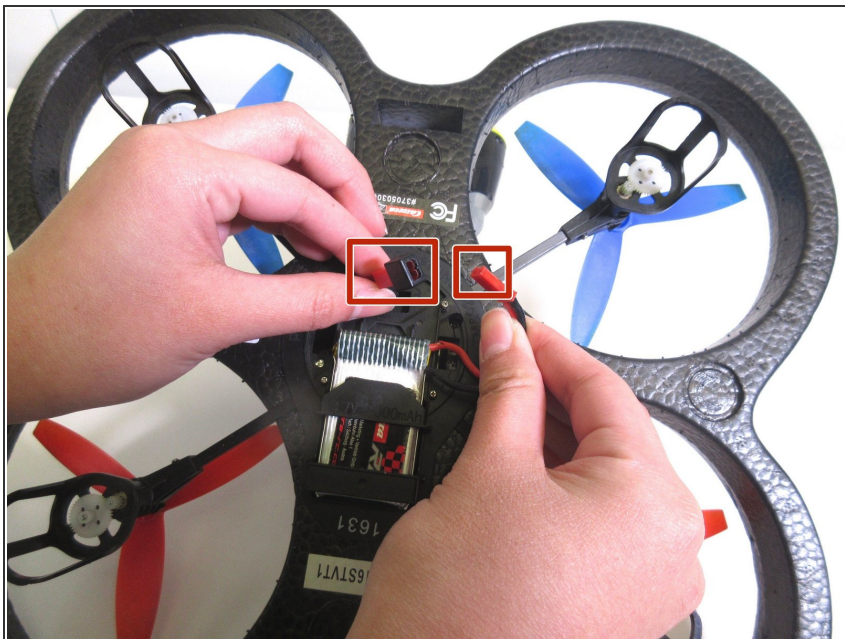
A weak or damaged motor might be the reason your quadrocopter is unable to fly properly. This guide will show you how to replace any of the four motors

---

### TOOLS:

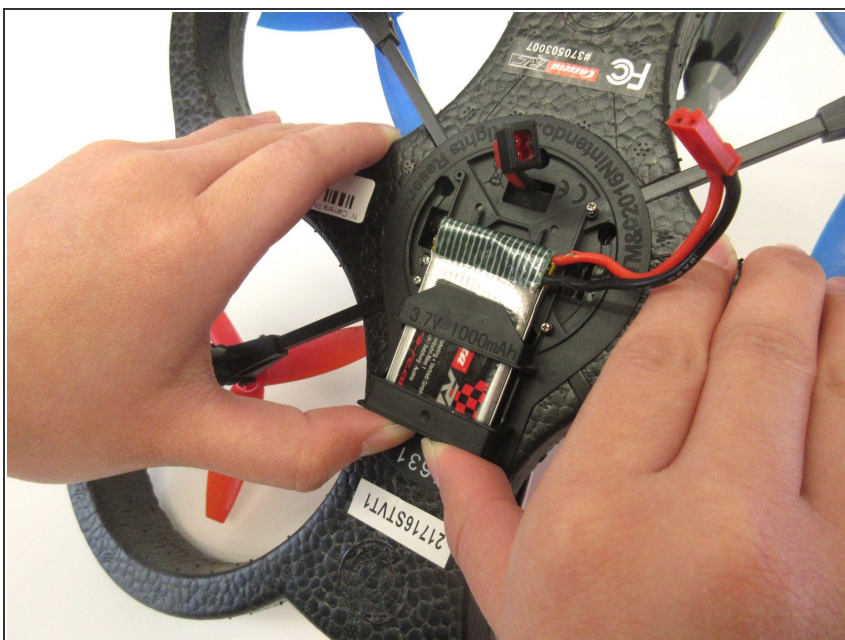
- [JIS #00 Screwdriver](#) (1)
  - [Phillips #1 Screwdriver](#) (1)
  - [Phillips #00 Screwdriver](#) (1)
  - [Precision Tweezers Set](#) (1)
-

## Step 1 — Battery



- Flip the quadcopter over so that the underside of the device is facing up.
- Unplug the battery cable from the socket on the quadcopter.

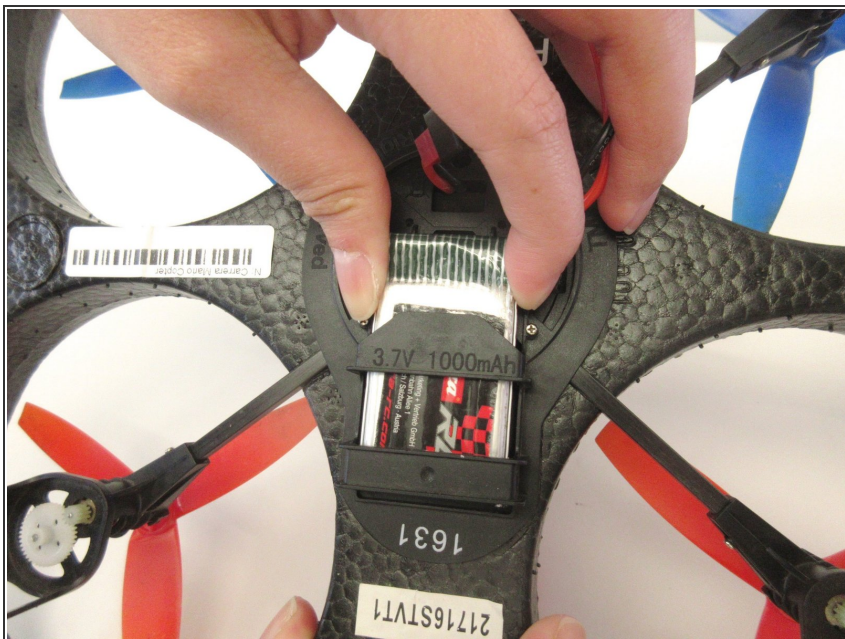
## Step 2



- Push the battery upward with your thumbs to loosen it from the tight slot until your thumbs can not reach the bottom of the battery anymore.

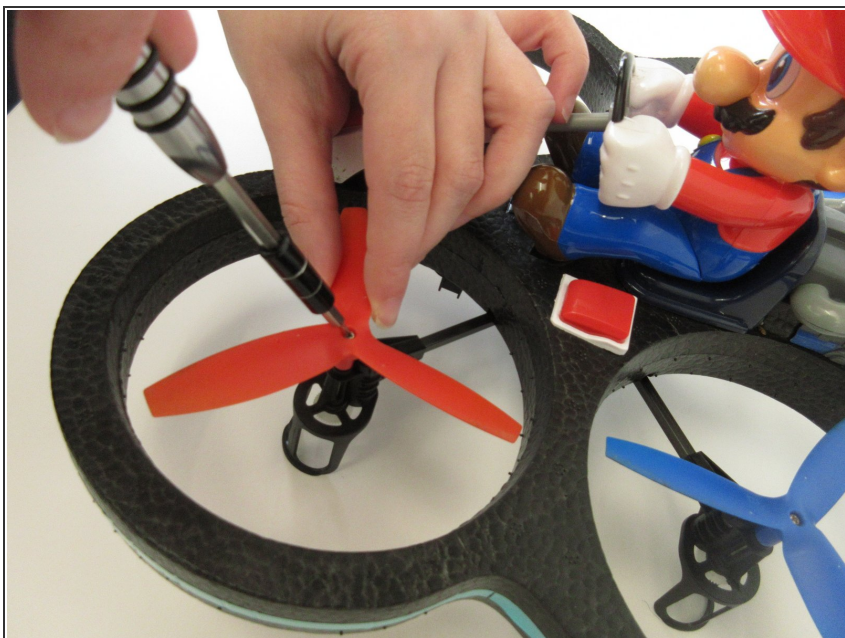


### Step 3



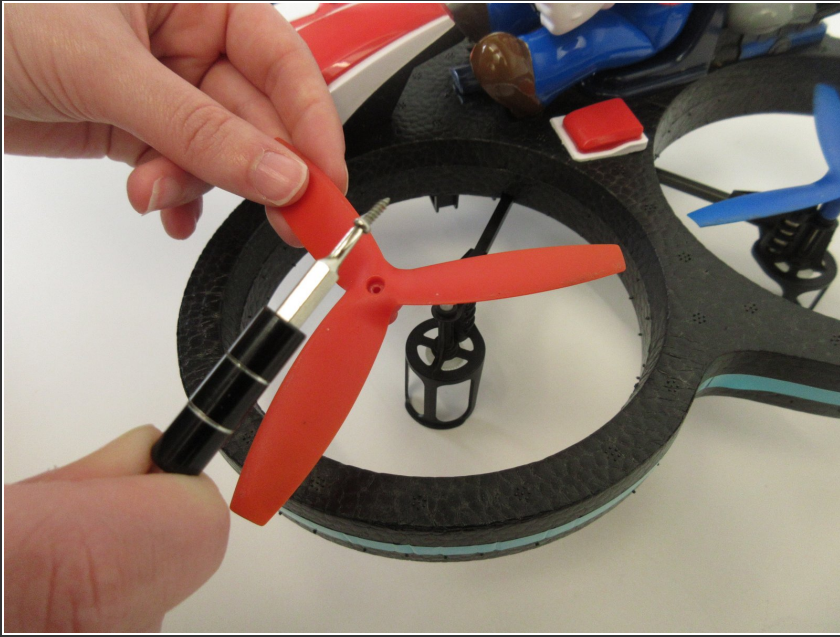
- Pull the battery away from the slot to remove it.

### Step 4 — Rotor Blade



- Using the JIS #00 screwdriver, hold the rotor blade still and unscrew the 4.762mm screw in the center of the blade.

## Step 5



- Lift the screw out and set it aside.
- Lift the rotor blade out.
- ⓘ Be sure to place the rotor blades properly for stable flight. With the quadcopter facing you, the front rotor blades should be red with blade A on the right and B on the left. The rear rotor blades should be blue with blade B on the right and A on the left.

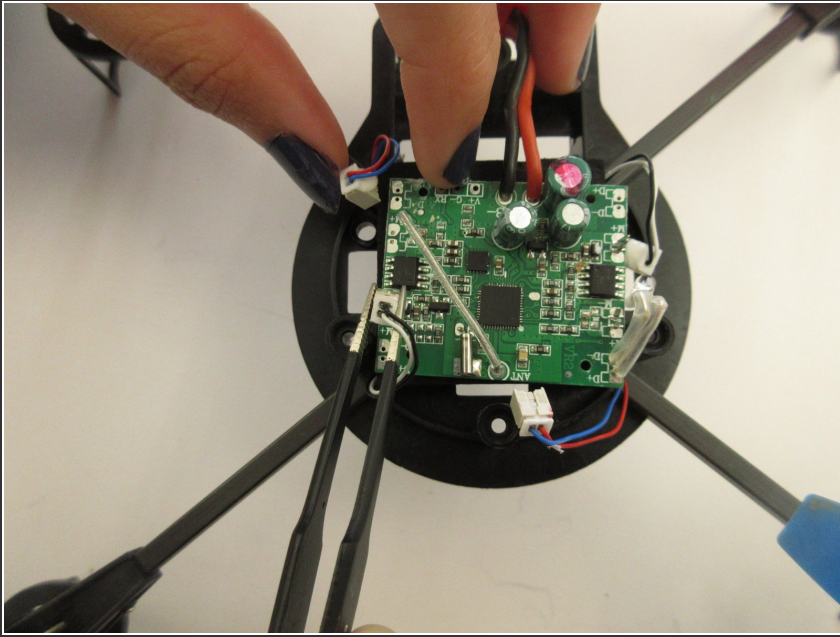
## Step 6 — Motor




- With the PH1 screwdriver, unscrew the four 7.1mm screws located underneath the quadcopter.
- Pull the base out and set the foam piece aside



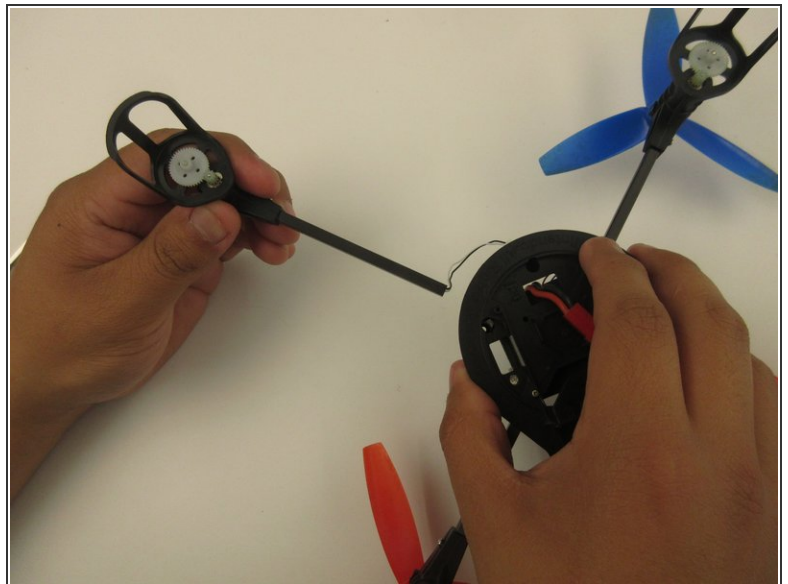
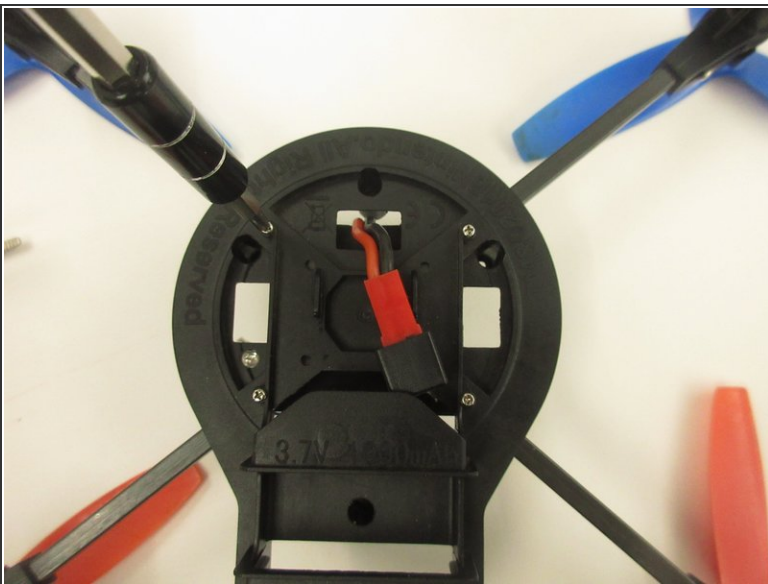
## Step 7




- From the precision tweezers set, use the round-end tweezers to pull and wiggle the white-head wires from the motherboard.

 Be sure to pull from the connector. Otherwise you run the risk of slicing through the wires.

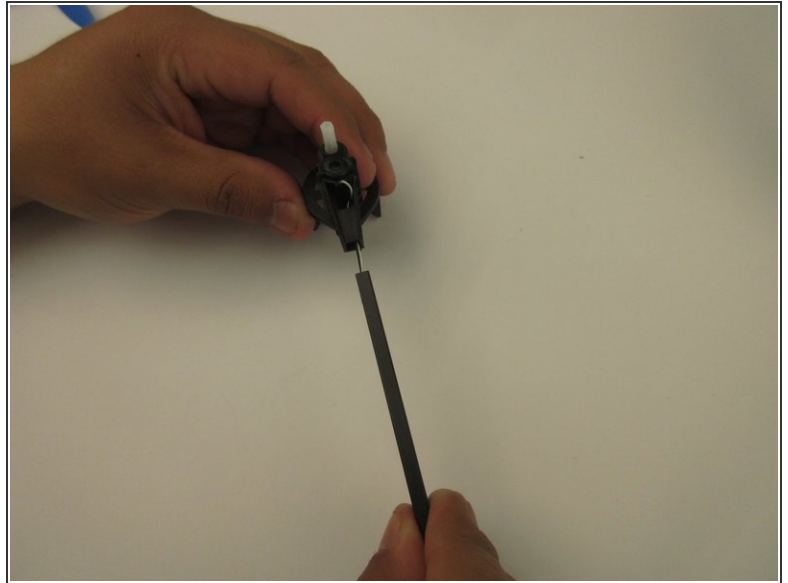
## Step 8



- Using the PH0 screwdriver, unscrew the 3.2 mm screw on the base.
-  While all four locations are shown, you will only have to remove the screw/s corresponding to the motor/s you are replacing.
- Pull the rotor leg out from the base

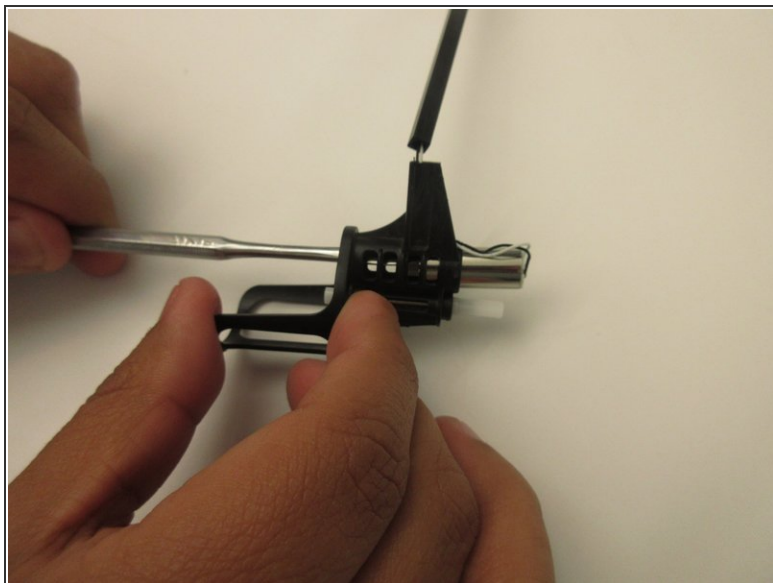
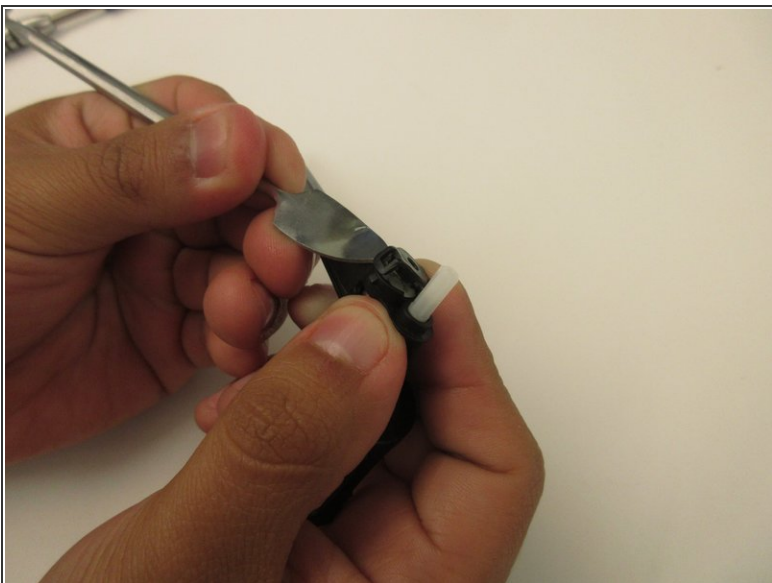
This document was generated on 2020-11-23 06:03:58 AM (MST).

## Step 9



- Using the PH0 screwdriver, unscrew the 4 mm screw where the leg meets the motor case/ rotor stand.
- Pull the leg apart from the motor case/ rotor stand

## Step 10



- Using the metal spudger of your choice, remove the clip at the top of the motor.
- Use the thinner side of the spudger to push the motor through and out of the case.

## Step 11



- Cut the connection head off and pull the wiring out of the leg.



To reassemble your device, follow these instructions in reverse order.