



# Acer Aspire E1-510-2500 Fan Replacement

How to replace fan in the Acer Aspire E1-510-2500.

Written By: Sebastian Taylor



---

## INTRODUCTION

The fan helps circulate air through a laptop and cool off important pieces. A broken or dirty fan can cause overheating.

---

### TOOLS:

- [Spudger](#) (1)
  - [Phillips #1 Screwdriver](#) (1)
  - [iFixit Opening Tools](#) (1)
  - [Tweezers](#) (1)
-

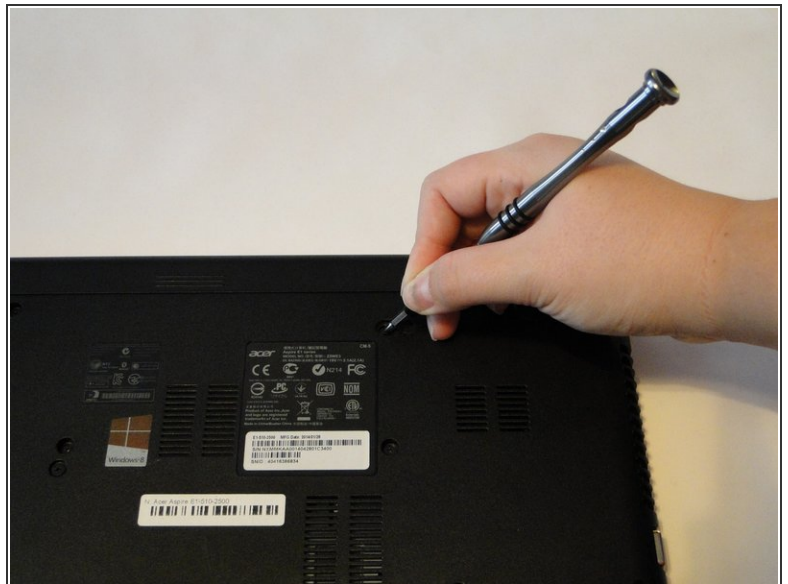
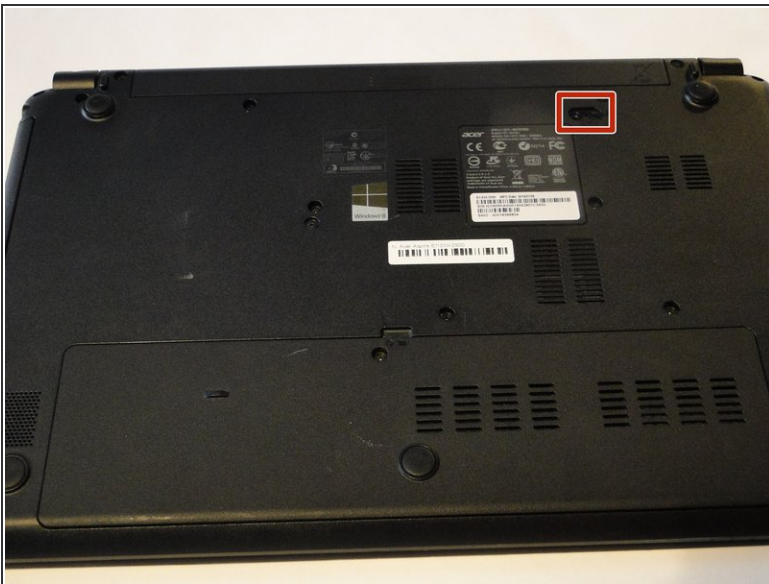
## Step 1 — Battery



⚠ Ensure that your laptop is completely switched off, and disconnected from the power source.

- Flip the laptop so that the base of the laptop is facing up.

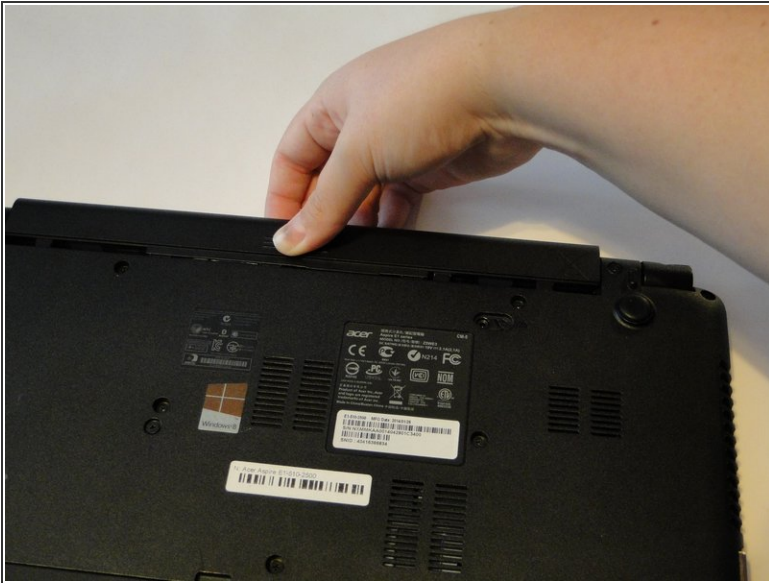
## Step 2



- Insert a spudger into the battery release latch.
- Slide the battery release latch to the right, this will eject the battery for safe removal.

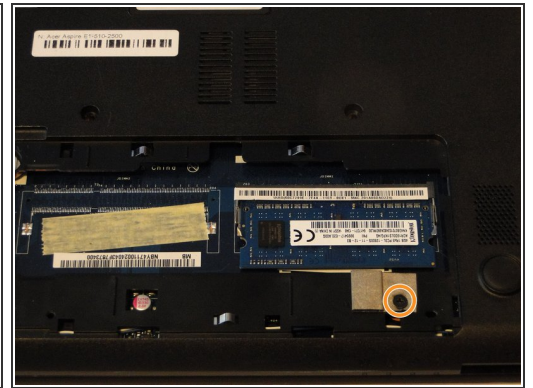
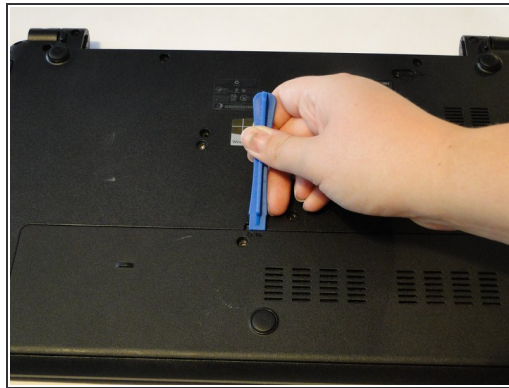


### Step 3



- Carefully slide the battery out of the battery's home.

### Step 4 — Motherboard



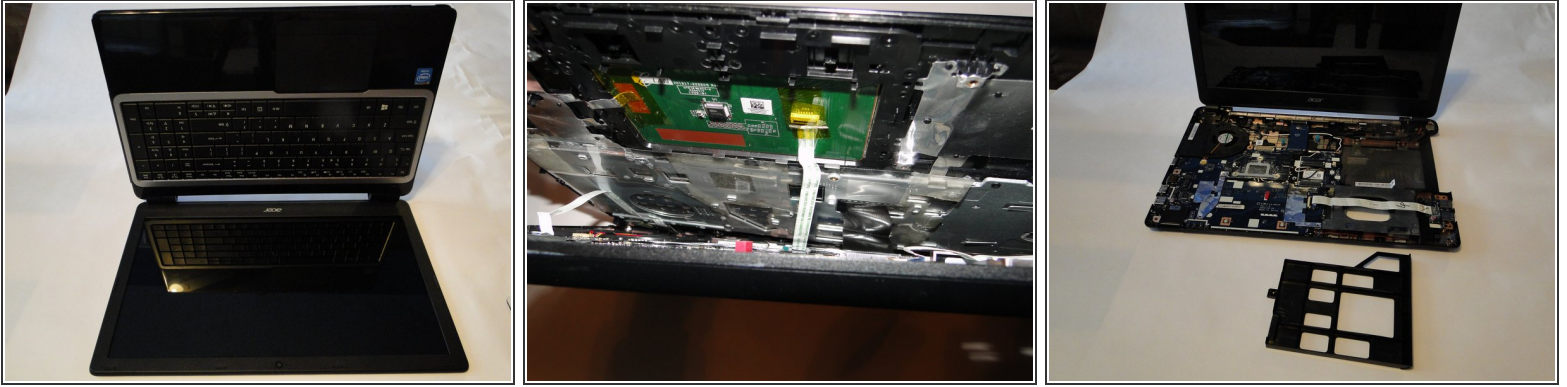
- Using a Phillips 1 screwdriver, remove the 17 9 mm screws from the bottom of the laptop, including the one in the back panel.
  - Using a plastic opening tool, carefully remove the back panel.
  - Remove the 9mm screw under the back panel.
- ✦ When reassembling, insert the back panel from the bottom edge first.

## Step 5



- Using a plastic opening tool, carefully separate the frame along the edges of the laptop. This should separate the keyboard assembly from the bottom portion of the laptop.

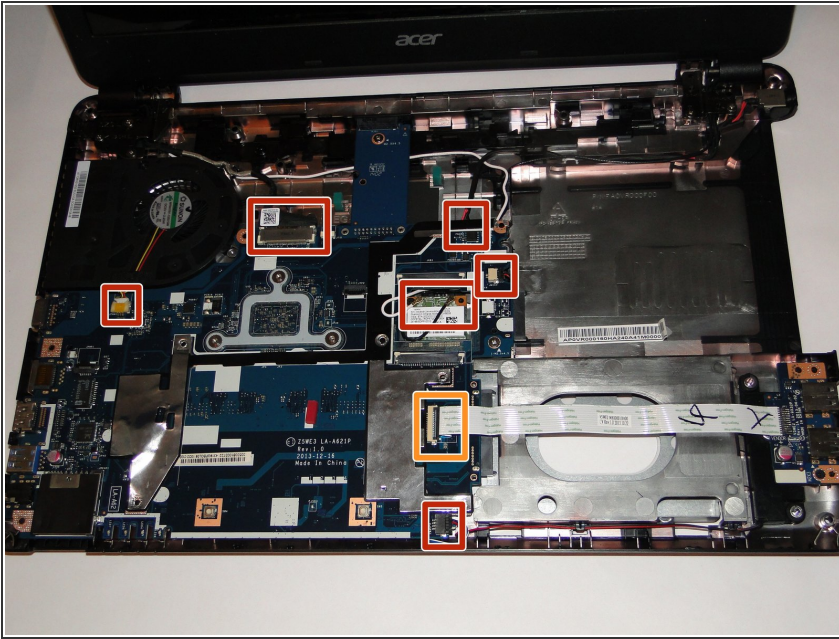
## Step 6



- Open the laptop, leaving the screen flat on the table.
  - Carefully pull the keyboard assembly out away from the base of the laptop. There should be three connections visible in the gap between the keyboard assembly and the base.
  - Using tweezers, carefully detach the connections from the base.
  - Place the keyboard assembly and the disk tray place holder aside.
- ☒ For reassembly, leave the disk tray place holder out until after the blue tape connector has been reconnected, to have enough space to reattach the tape. The disk tray place holder can then be slid back into place from the side of the laptop.

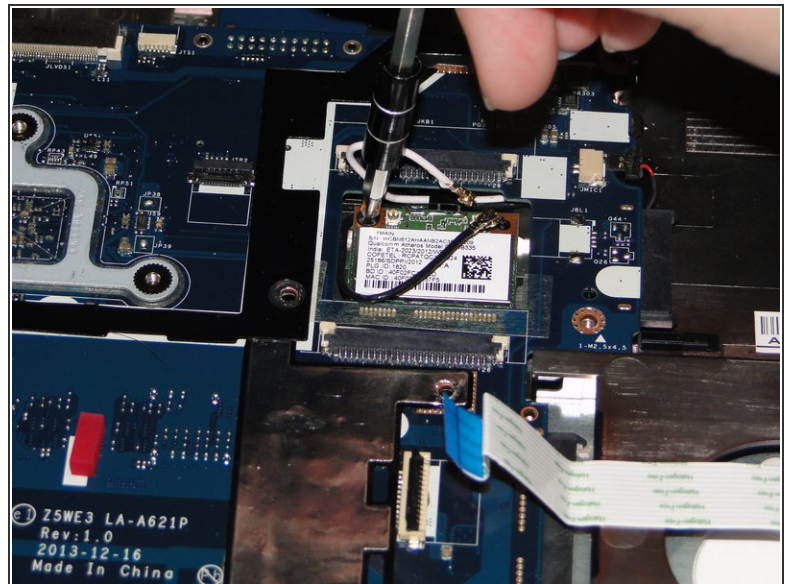
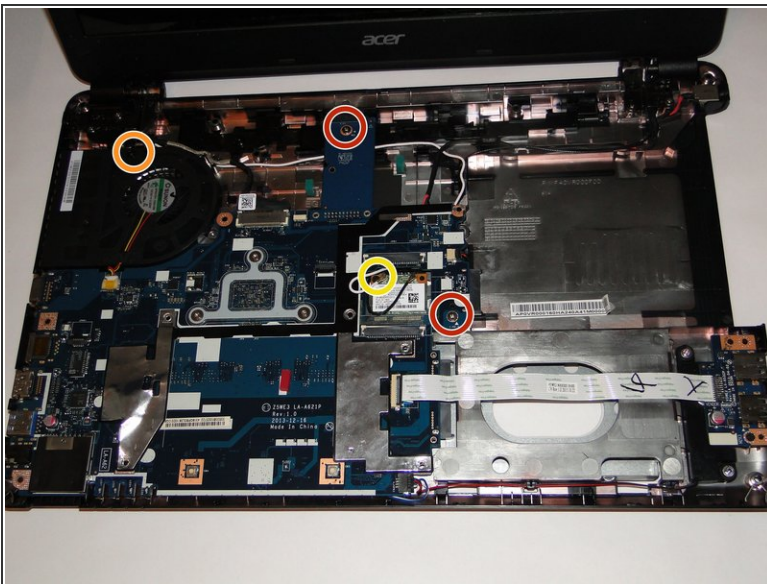


## Step 7



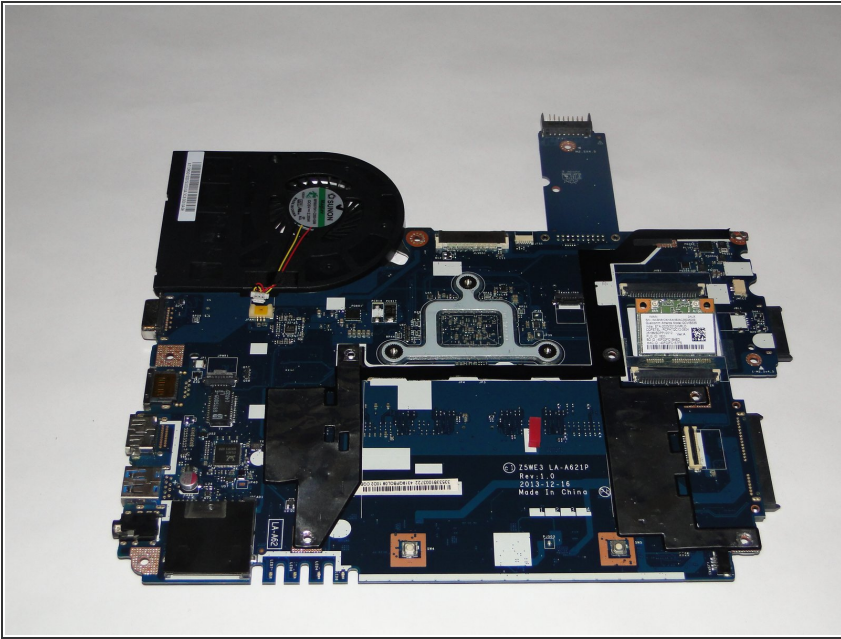
- Remove the six wire connections to the motherboard.
- Remove the tape connection by lifting the plastic black holding piece and carefully pulling the tape out of it's slot.

## Step 8



- Using a Phillips 1 screwdriver, remove the two 5mm screws from the motherboard.
- Using a Phillips 1 screwdriver, remove the black 5mm screw from the fan.
- Using a Phillips 1 screwdriver, remove the black 3mm screw from the WiFi card.

## Step 9



- Carefully remove the motherboard by lifting along the right edge first.

⚠ The headphone jack and the connection to the battery are both attached to the motherboard and under part of the casing. Pulling roughly at the motherboard could damage either or both of these pieces.

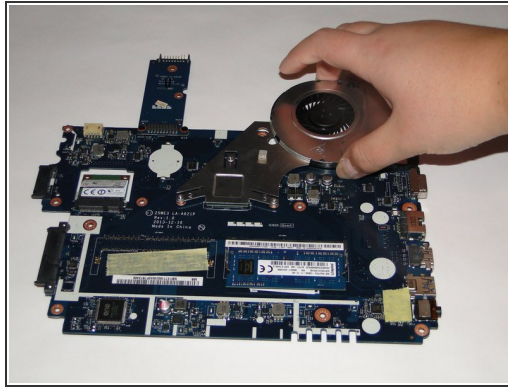
## Step 10 — Fan



- Detach the connector between the fan and the motherboard.



## Step 11



- Flip the motherboard over so that the back is face-up.
- Unscrew the three 5mm screws and lift the fan off of the motherboard.

To reassemble your device, follow these instructions in reverse order.