



# MSI GS63VR 6RF Stealth Pro Hard Drive Replacement

A hard drive is where the files on a computer are saved. A corrupt file or boot-up can be caused by the hard drive.

Written By: Nabil Ranjbar



---

## INTRODUCTION

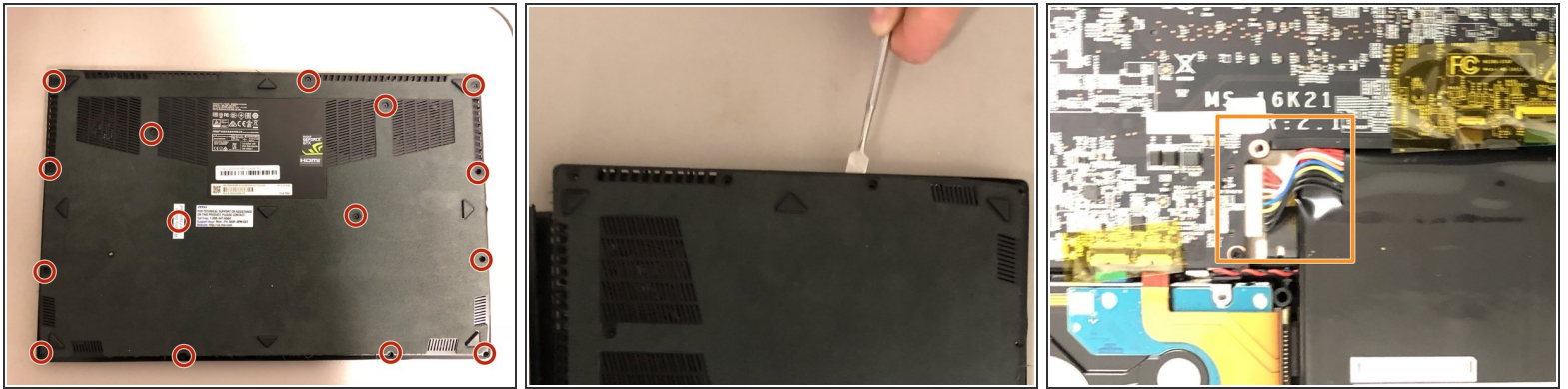
Is the hard drive malfunctioning when saving files? If so, this hard drive guide will allow you to remove the hard drive.



### TOOLS:

- [Phillips #00 Screwdriver](#) (1)
  - [Pick Tool](#) (1)
  - [iFixit Opening Tools](#) (1)
-

## Step 1 — Hard Drive



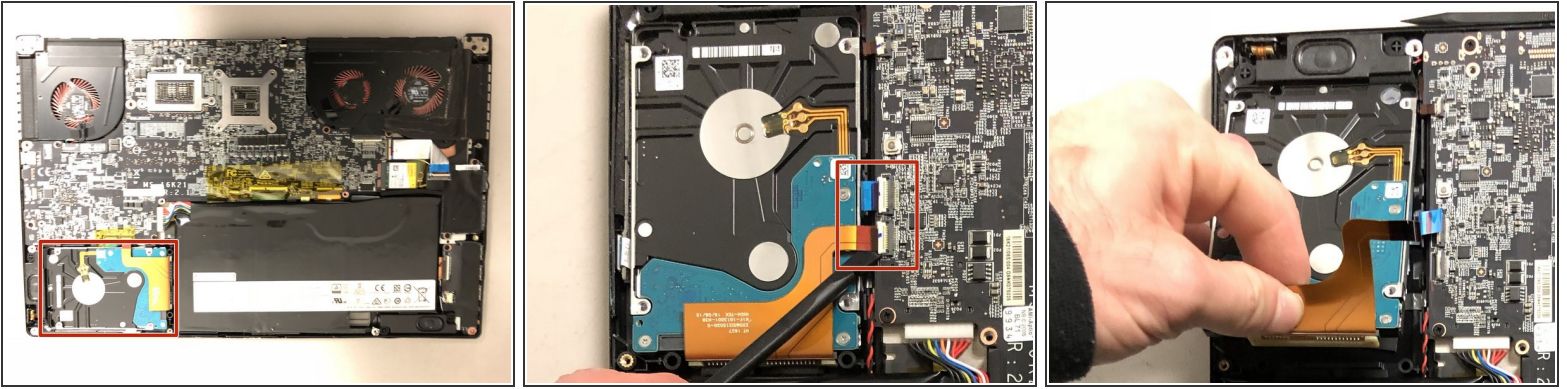
✦ Turn off the laptop before proceeding.

- Unscrew the 15 screws on the bottom panel using a Phillips #00 screwdriver.
- Pry open the back cover with a plastic prying tool.

⚠ Unplug the battery cable from the motherboard to prevent a ground fault. Either use your hand or a pair of tweezers to unplug the battery cable.

⚠ Too much pressure from the spudger can break the clips that secure the back panel, but some flex is not dangerous.

## Step 2



- Disconnect the SATA cables from the motherboard using a plastic spudger.
- Gently pull out the SATA cables out of the ports.
- Grab the auburn color cable and lift up the hard drive. Slide out the hard drive while holding onto the cable.

⚠ Cables are fragile. Do not apply excessive force.

To reassemble your device, follow these instructions in reverse order.