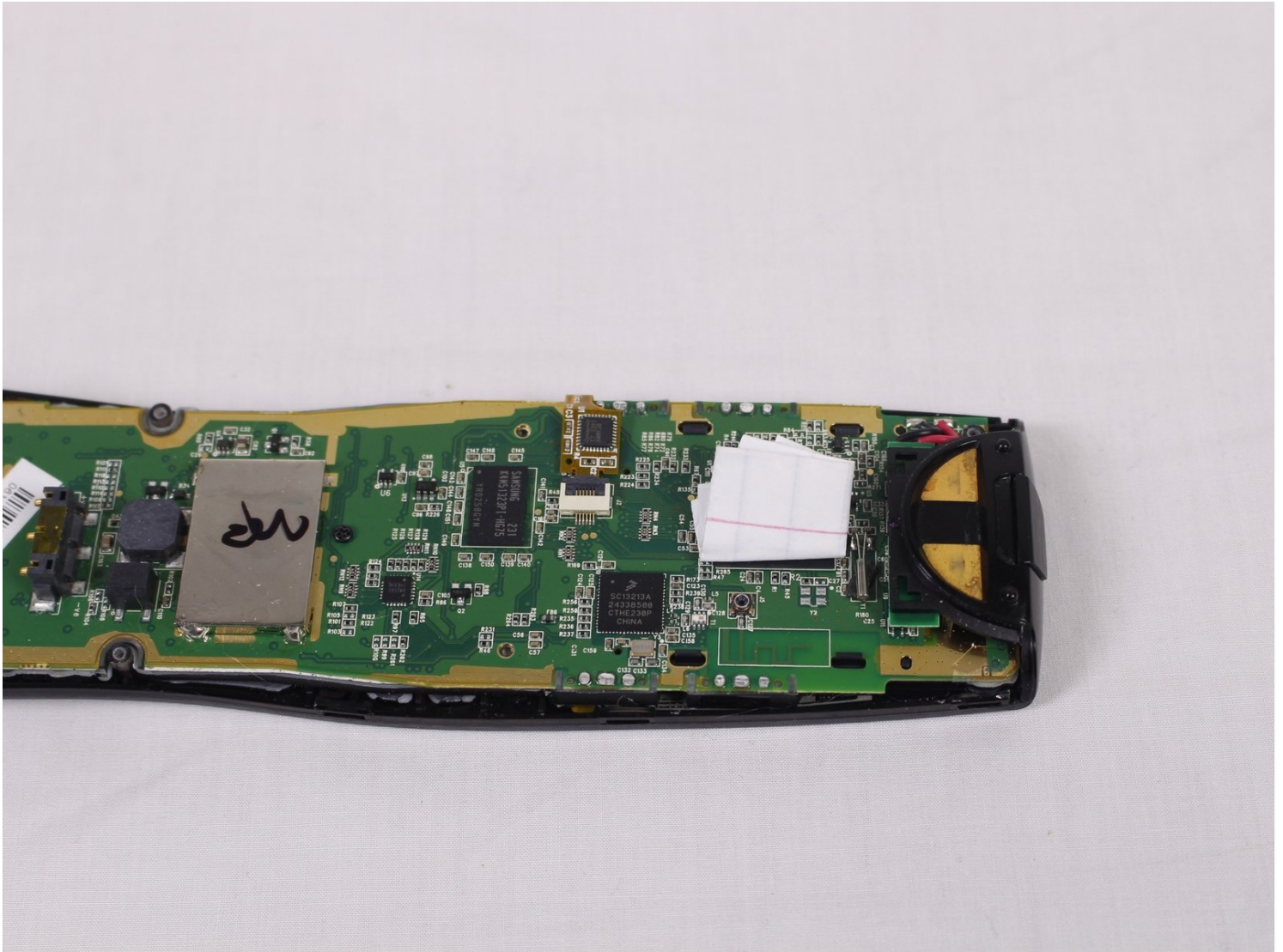




How to Stabilize the Logitech Harmony 900 Motherboard

This guide will show you how to stabilize the...

Written By: Tyler Hanks



INTRODUCTION

This guide will show you how to stabilize the motherboard of the Logitech Harmony 900 by placing a shim on the CPU. This guide is designed to solve the problem of device not starting due to bad CPU connections.

TOOLS:

Credit Card / Plastic (1)

Tweezers (1)

Phillips #0 Screwdriver (1)

Step 1 — Battery



- Press the oval shaped button on the lower back of the remote to release the battery cover.
- While pressing the button, remove the cover.

Step 2



- Push the battery in, pull it up, and slide it out.

Step 3 — Motherboard



- Using [tweezers](#), peel off the sticker located under the battery cover to reveal two screws.

Step 4



- Locate and unscrew the four 50mm screws using the Philips #0 screwdriver.

Step 5



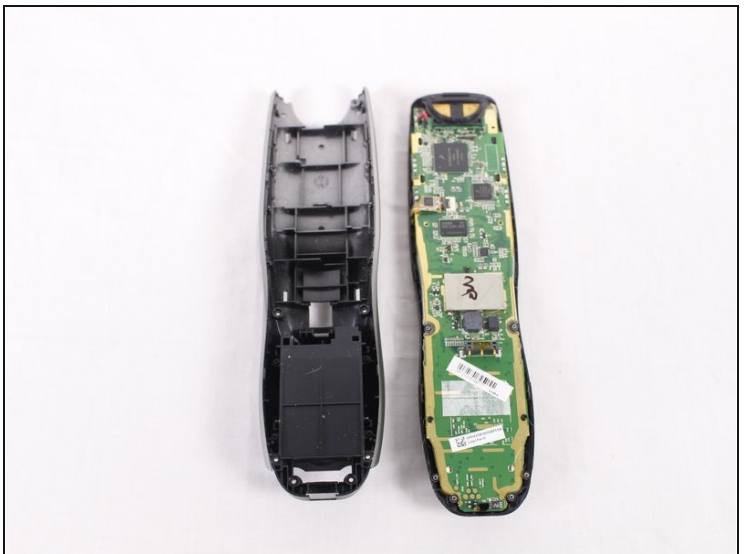
- Use a credit card to pry the black, plastic, back cover off of the device.
- ① You may need to get the process started with a metal prying tool before you start using the credit card.

Step 6



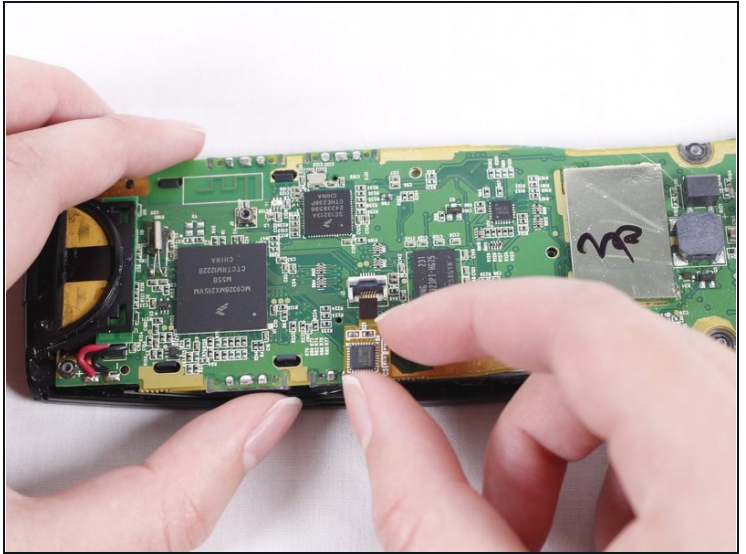
- Locate the three 50mm screws on the back of the remote and remove them using the Phillips #0 screwdriver.

Step 7



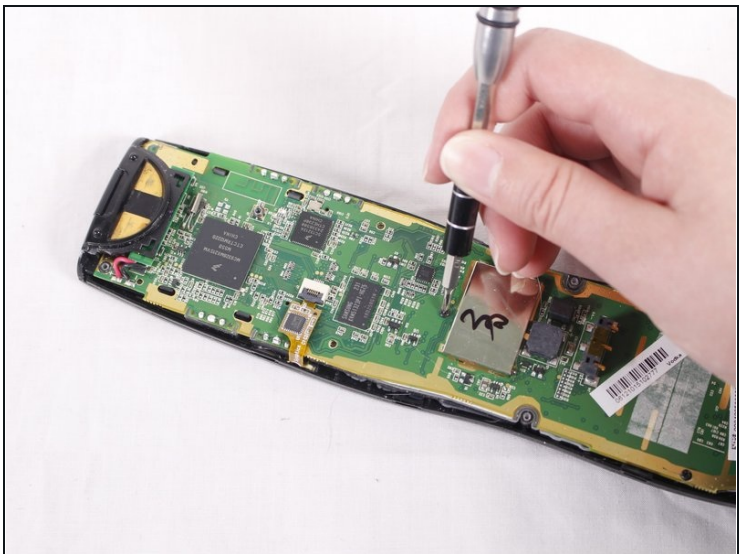
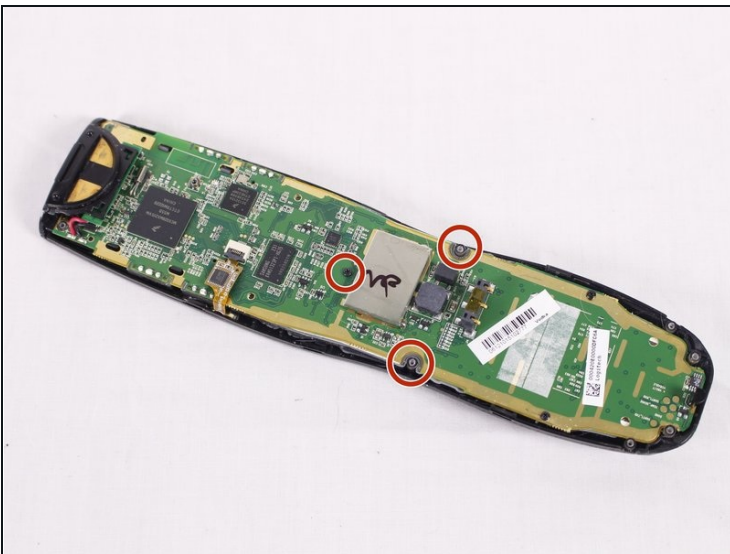
- Pry the black, front face of the remote from the back silver part by inserting a credit card in between and sliding down.
- ⓘ Again, you may need to use a metal prying tool to get the separation started.

Step 8



- When you look at the circuit board, you should see a ribbon attaching the board to the plastic casing.
- A little lever is holding the ribbon in place. Lift the lever with your nail or a 2.5mm flat-head screwdriver. Move the ribbon away from the circuit board.

Step 9



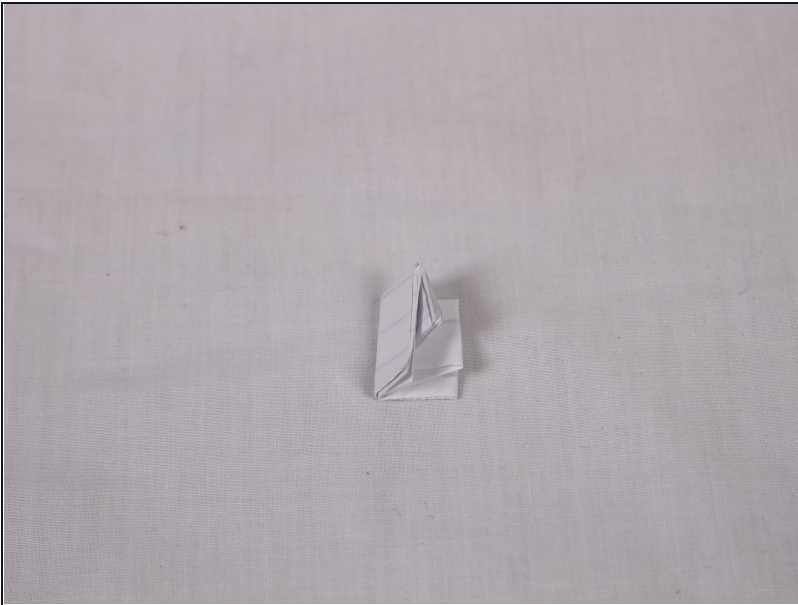
- Using the Philips #0 screwdriver, remove the three 50mm screws from the circuit board.

Step 10



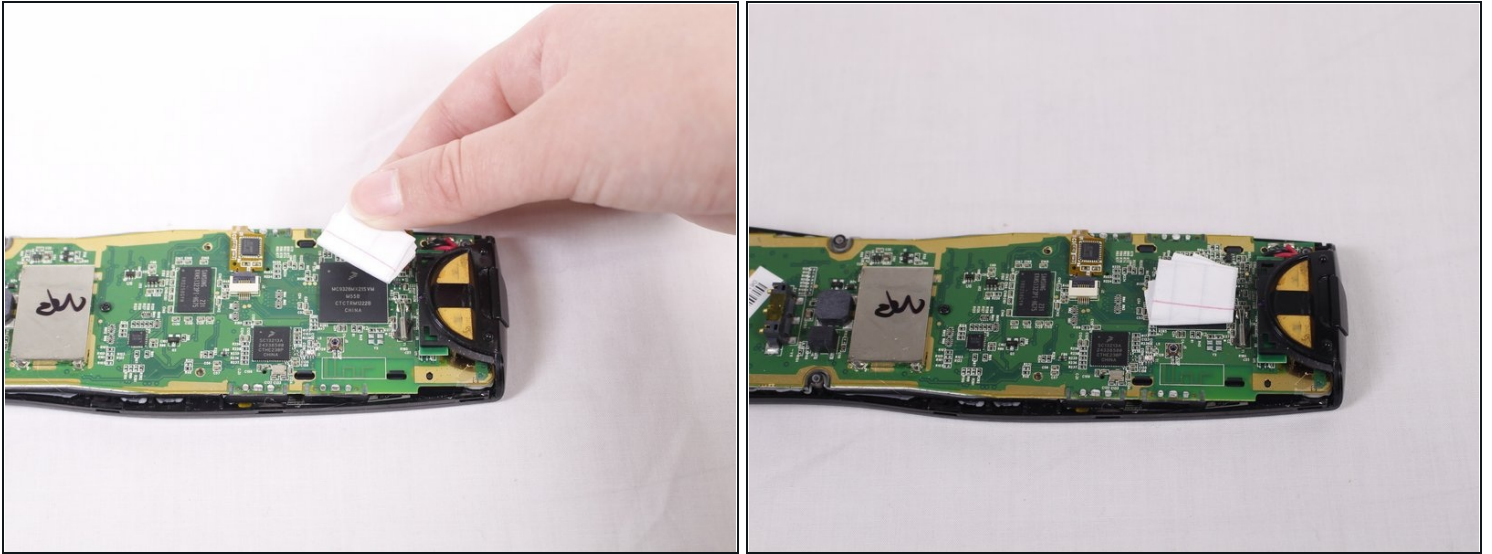
- Using your hands, carefully separate the motherboard from the rest of the remote.

Step 11 — How to Stabilize the Logitech Harmony 900 Motherboard



- Fold a small piece of paper several times until you have a shim about the size of a penny.

Step 12



- Place the shim on the CPU, which is the top leftmost black box on the motherboard.

To reassemble your device, follow these instructions in reverse order.