



Asus X502CA-BCL0901D Webcam Replacement

This guide will show you how to replace the webcam of your laptop.

Written By: Gregory Browne



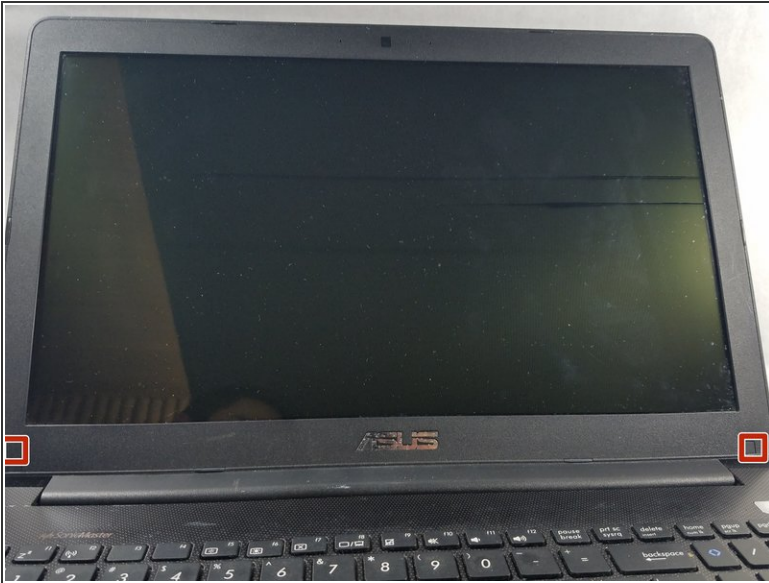
INTRODUCTION

If the laptop gets dropped or bumped too hard the webcam cables may become disconnected or the webcam may break. This guide will show you how to replace it.

TOOLS:

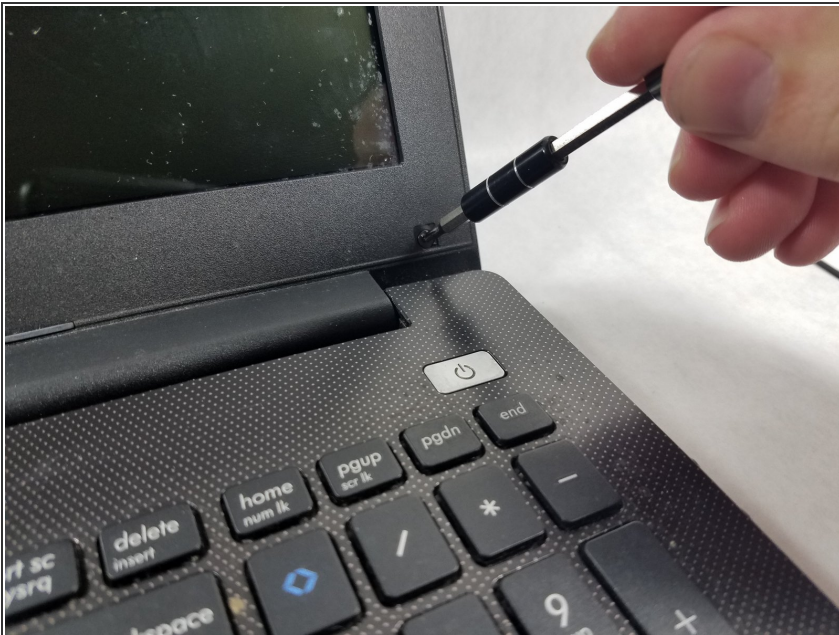
- [Tweezers](#) (1)
 - [Phillips #00 Screwdriver](#) (1)
 - [iFixit Opening Tools](#) (1)
-

Step 1 — Screen Frame



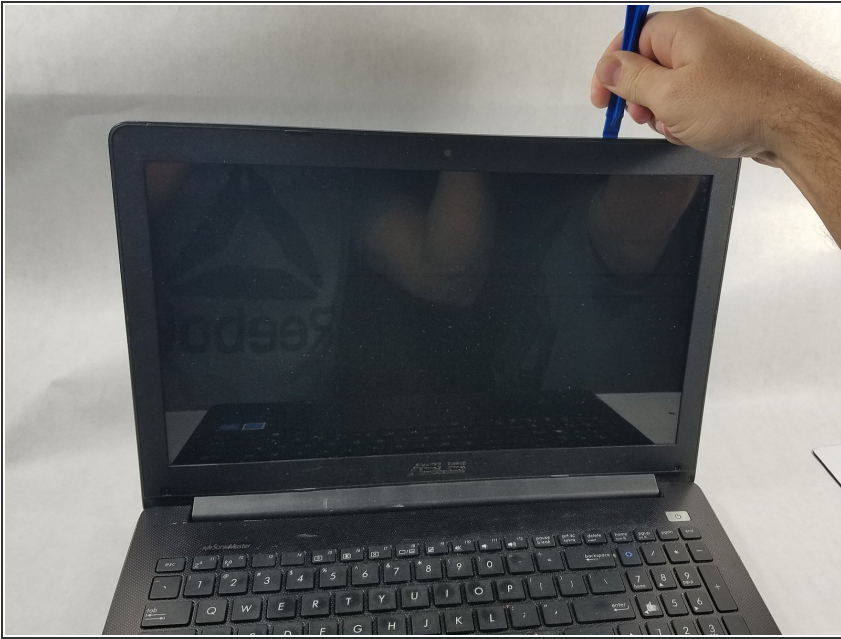
- Using the tweezers, remove the 2 black plastic adhesive covers from the bottom corners of the screen frame.

Step 2



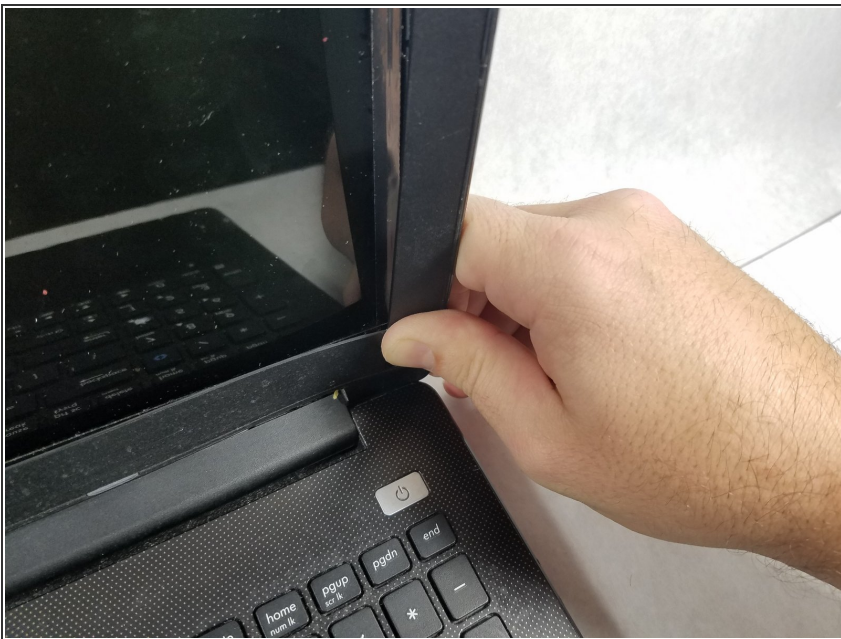
- Use the Philips #00 screwdriver to remove the 2 screws that were revealed in the previous step.
- ① The screws are 20 mm in diameter and 50 mm long.

Step 3



- Using the plastic opening tool, pry the screen frame away from the screen.

Step 4



- Using your hands, grasp the screen frame at its base near the laptop hinge.
- While pulling the base of the screen frame away from the hinge horizontally, also lift up on the screen frame to disconnect it from the laptop hinge.

⚠ The space between the screen frame and laptop hinge is very small and the plastic for both parts is weak. However, a fair amount of force is required to disconnect the screen frame from the laptop hinge. Be careful during this step, or either of these plastic pieces may break.

Step 5 — Webcam



- Using tweezers, unplug the webcam wire from the webcam.
- ⓘ If this wire was already disconnected, that may be the cause of the webcam not functioning. Try reconnecting this wire and reassembling to see if the problem is resolved before continuing.

Step 6



- Using fingers or tweezers, pry the webcam from the laptop.
- ⓘ The webcam is only secured with adhesive.

To reassemble your device, follow these instructions in reverse order.