



Bissell Pet Hair Eraser Motorized Brush Replacement

This disassembly guide demonstrates how to take the motorized brush apart.

Written By: Roman Dyagilev



INTRODUCTION

In order to access electrical components and the belt within the motorized brush, the motorized brush must be disassembled. This guide demonstrates how to replace the motorized brush.



TOOLS:

- [Phillips #0 Screwdriver](#) (1)
 - [Spudger](#) (1)
-

Step 1 — Motorized Brush



⚠ Turn power OFF.

- Detach motorized brush from the vacuum.

Step 2



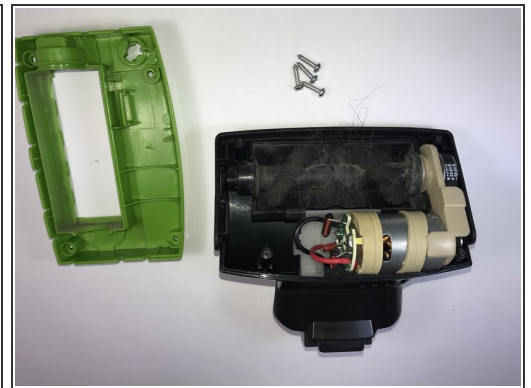
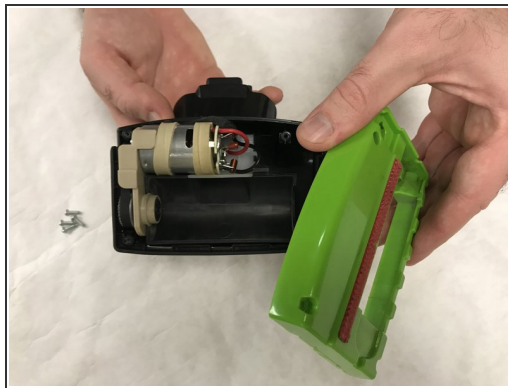
- Use a spudger or a coin to turn the circular lock clockwise to unlock the brush roll.
- Remove the lock cover.

Step 3



- Lift brush out of the enclosure.

Step 4



- Remove the four 13.0 mm Phillips #0 screws and remove the green cover.

Step 5



- Take out the motor assembly.

To reassemble your device, follow these instructions in reverse order.