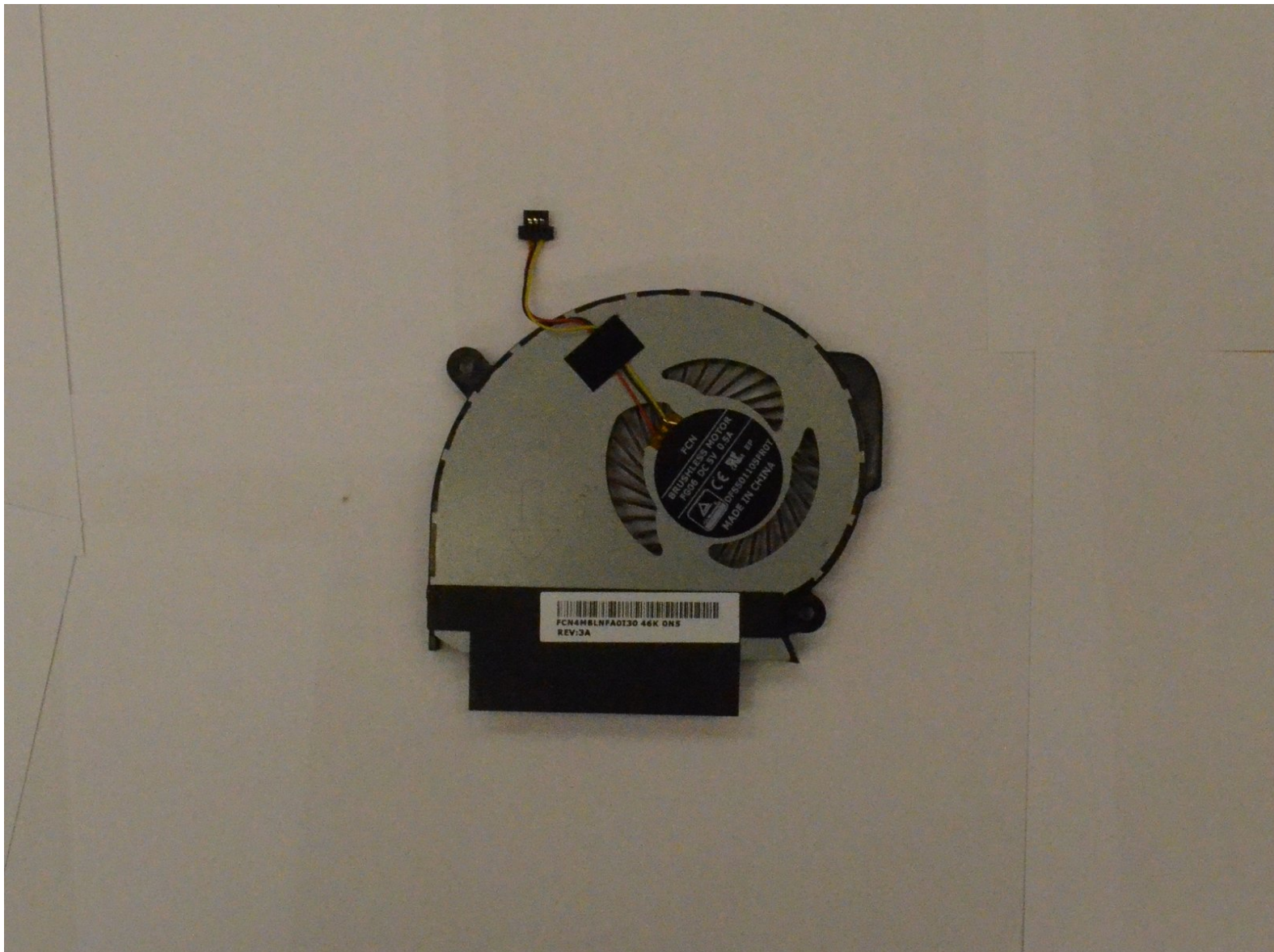




Toshiba Satellite S50-B Cooling Fan Replacement

How to replace the cooling fan for the Toshiba Satellite S50-B.

Written By: diana calvo



INTRODUCTION

The guide demonstrates how to replace a cooling fan for the Toshiba Satellite S50-B. You will need the Phillips #0 screwdriver and the plastic opening tool.



TOOLS:

- [Phillips #0 Screwdriver](#) (1)
-

Step 1 — Battery



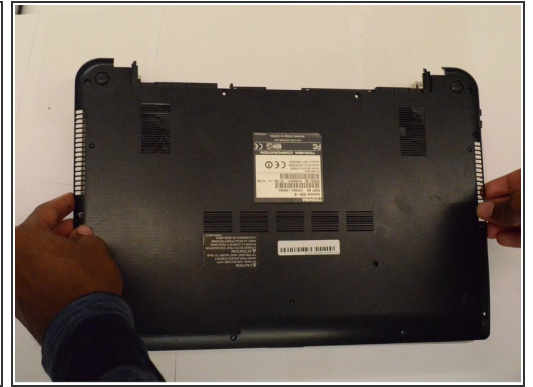
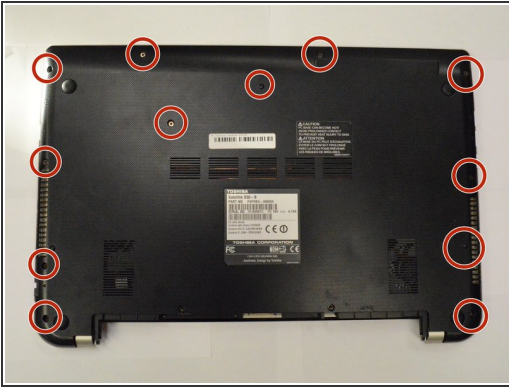
- i** Make sure you turn off the laptop first.
- Unscrew the two 6.5mm screws below the battery using a Phillips #0 Screwdriver.

Step 2



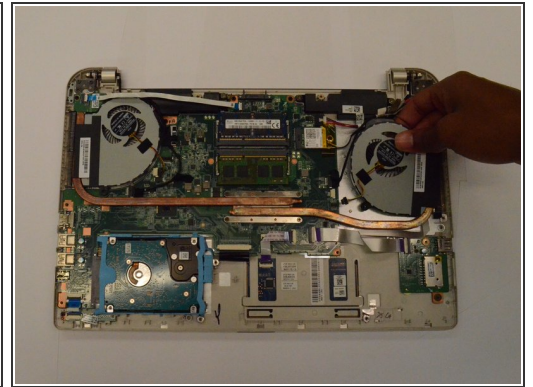
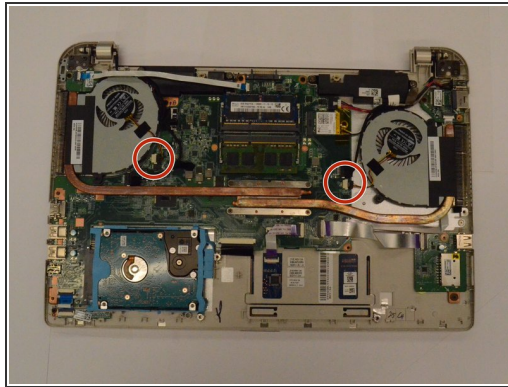
- Place thumbs on corners of the battery. Pinch the battery between the thumb and index finger and pull.

Step 3 — Cooling Fan



- Locate the 10 screws on the bottom of the device, there should be 12 screws in total including the battery screws. Unscrew using a Phillips #0 screwdriver, and set screws aside.
- Use a plastic opening tool to remove the bottom panel.

Step 4



- Locate the 2 screws on each fan. Unscrew them.
- Disconnect the fan by applying gentle pressure to the circled connection with your finger and pulling.
- Remove the fans. Be sure to keep track of the right and left fans, marked R and L.

To reassemble your device, follow these instructions in reverse order.