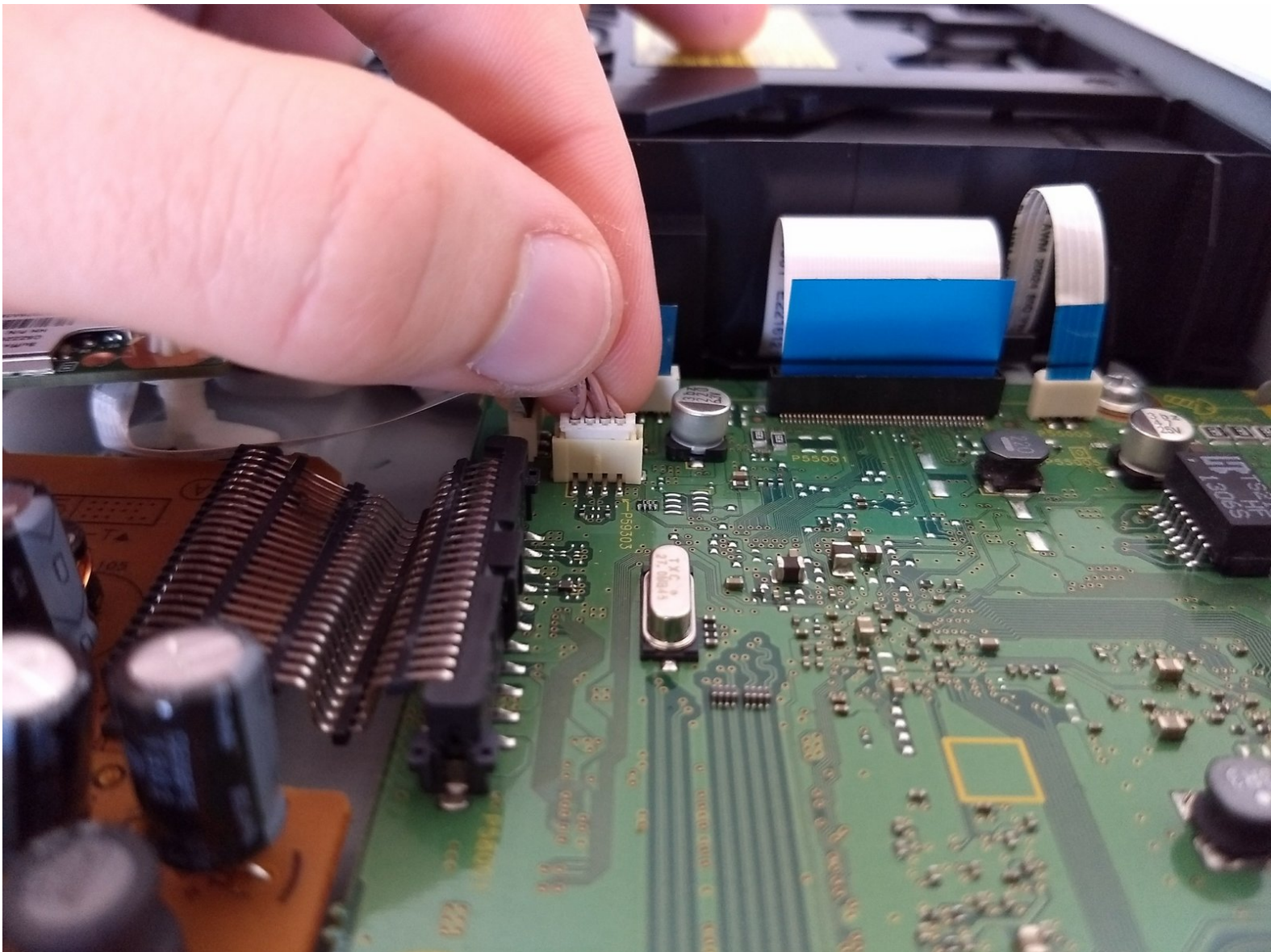




# Panasonic DMP-BD89 Wifi Board Replacement

How to replace the wi-fi board in the Panasonic DMP-BD89.

Written By: Mohan Saxena



---

## INTRODUCTION

If the wireless features of your device are malfunctioning, replacing the WiFi board may resolve the issue. Follow this guide to learn how to remove and replace the WiFi board.

---



### TOOLS:

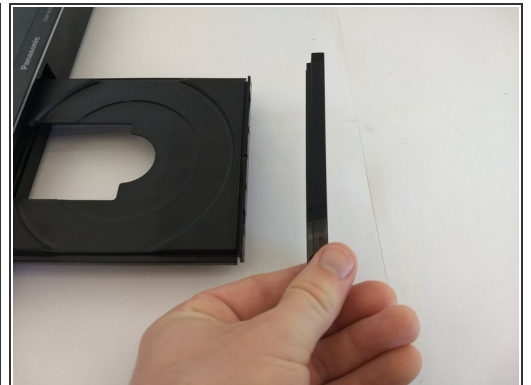
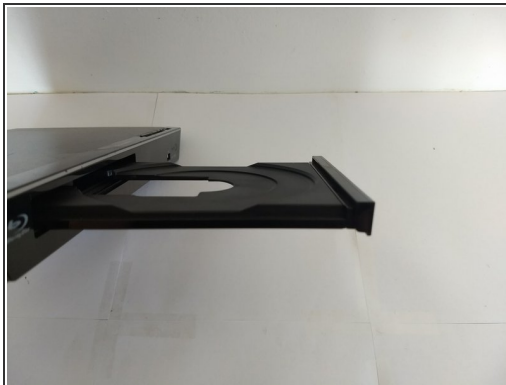
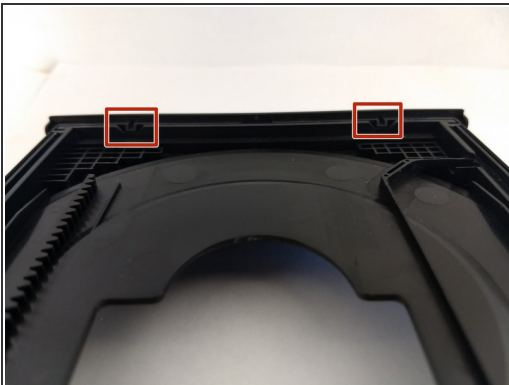
- [Phillips #1 Screwdriver](#) (1)
  - [Tweezers](#) (1)
-

## Step 1 — Disk Tray Cover



- First, before powering off, press the eject button to open the tray.

## Step 2



- Remove the front cover of the tray.
- Do so by gently pushing it out, away from the player, ensuring the pictured tabs clear the tray.
- Then slide it vertically up and away.

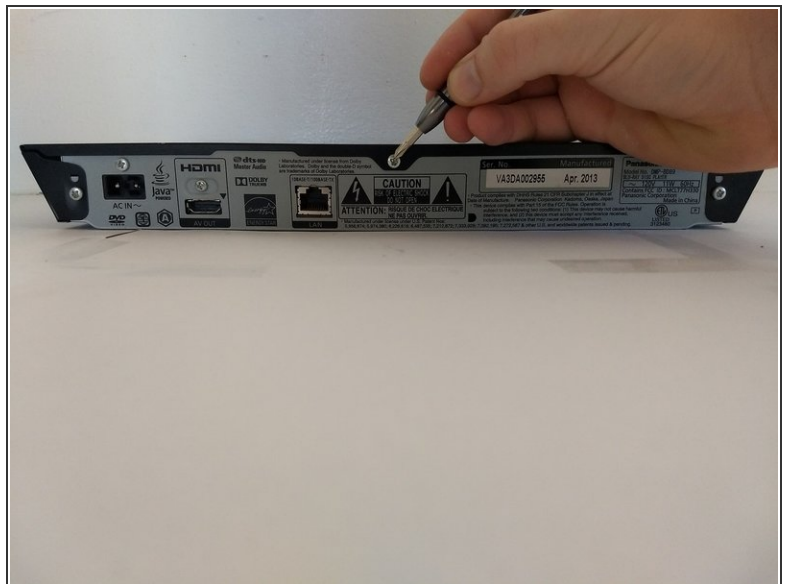


### Step 3



- Press eject button to close the tray.
- Make sure to unpower and unplug device before continue work on other fixes.

### Step 4 — Exterior Cover



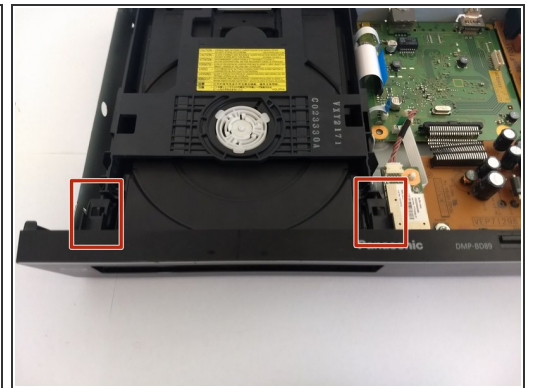
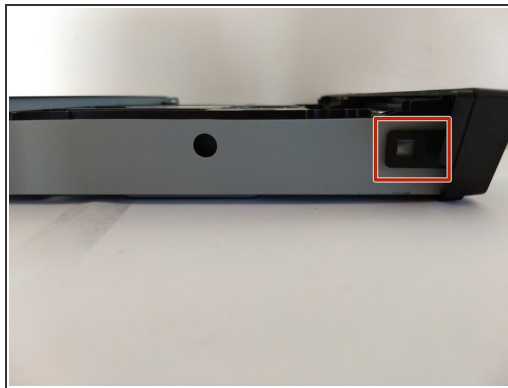
- Using a Phillips #1 screwdriver, unscrew the back three screws.

## Step 5



- Slide the top panel horizontally to remove it.

## Step 6



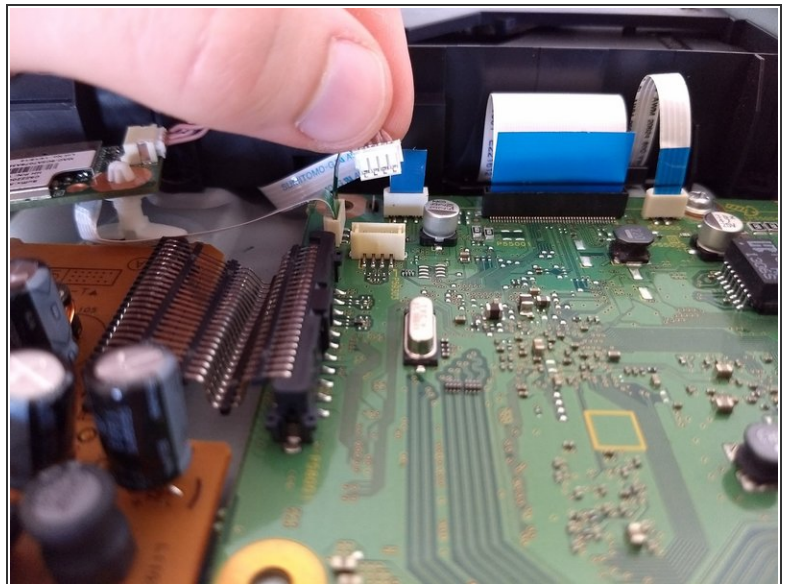
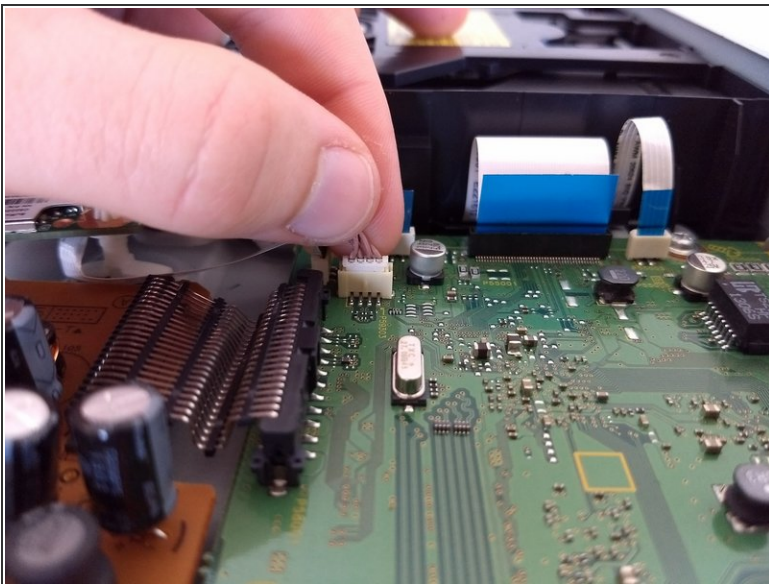
- Locate 6 tabs across the device.
- 2 are on the bottom, 1 is on the left and right, and 2 are are on the inside.

## Step 7



- Pop the 6 markers out.
- Then take off the cover.

## Step 8 — Wifi Board



- Locate reddish brown cable. Detach from green circuit board by pulling upward.



## Step 9



- Using tweezers, compress the white knob holding the wifi module board in place.

## Step 10



- Pull the module board straight up, removing completely. The second photo is how your device should look with the WiFi board removed.

To reassemble your device, follow these instructions in reverse order.

This document was generated on 2020-11-28 06:16:38 AM (MST).

