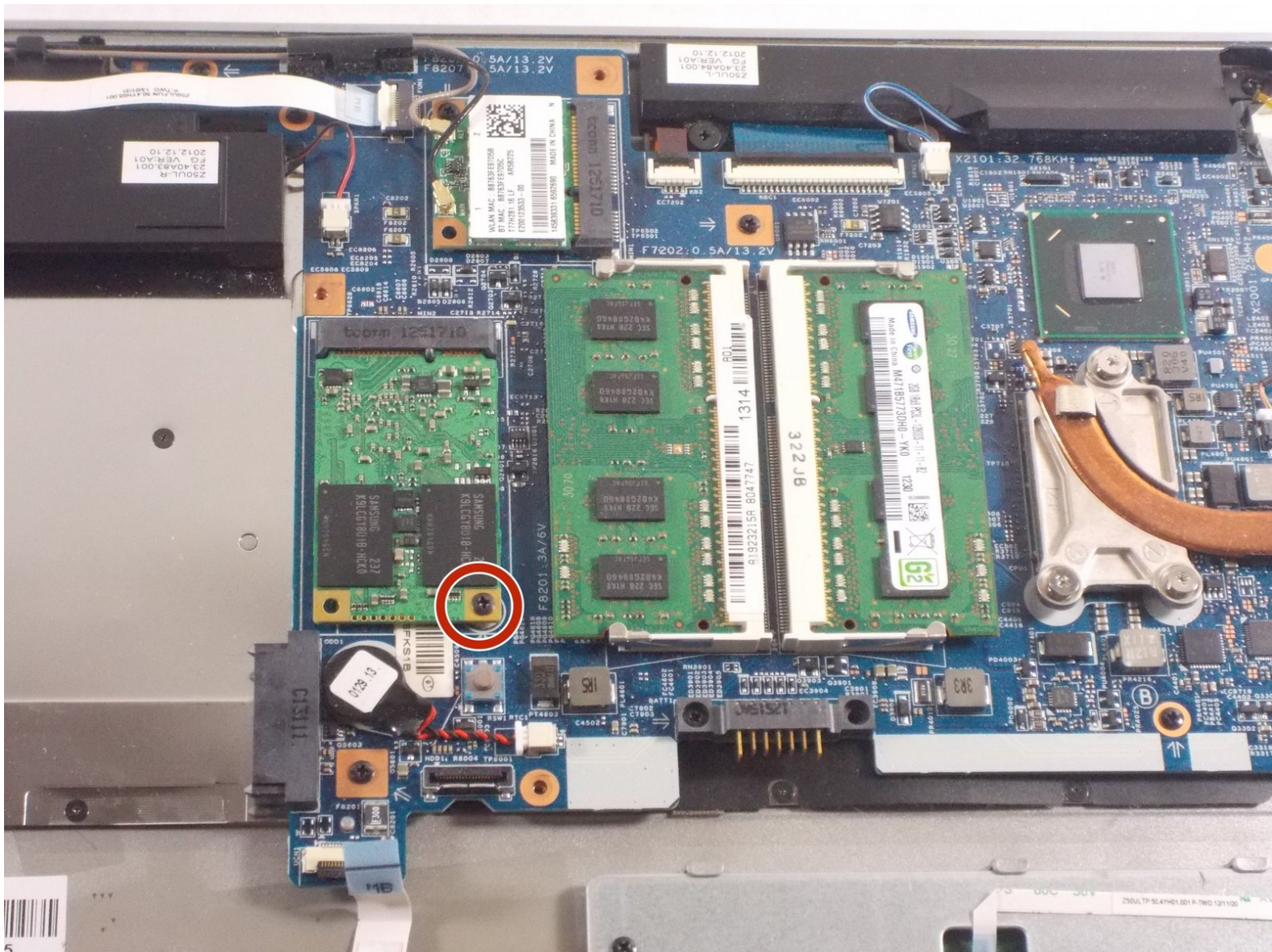




# Sony Vaio SVT151A11L SSD Replacement

How to replace the SSD in the Sony Vaio SVT151A11L.

Written By: Nathan McGarvey



---

# INTRODUCTION

SSDs are a way to quickly store and access saved data on your computer

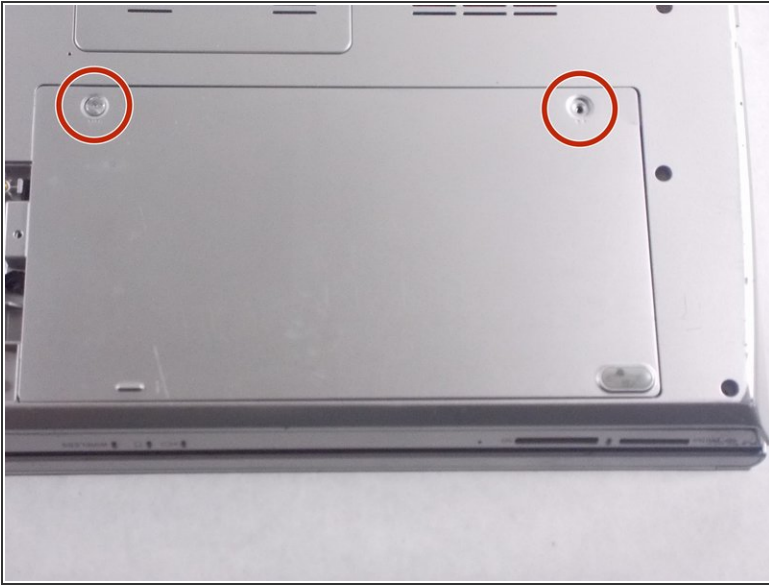
---



## TOOLS:

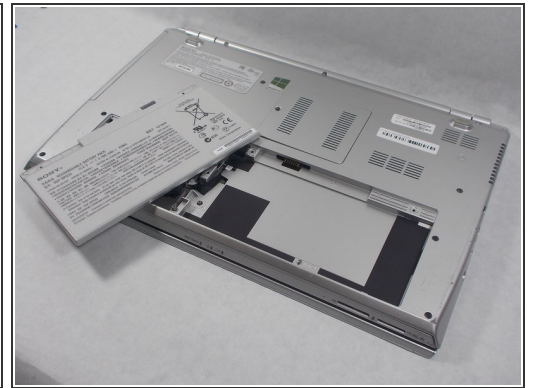
- [JIS #0 Screwdriver](#) (1)
  - [iFixit Opening Tools](#) (1)
-

## Step 1 — Battery



- Flip the laptop over so that the battery on the underside of the device is revealed.
- Unscrew the two 11mm slotted silver screws that can be found at the top of the battery.

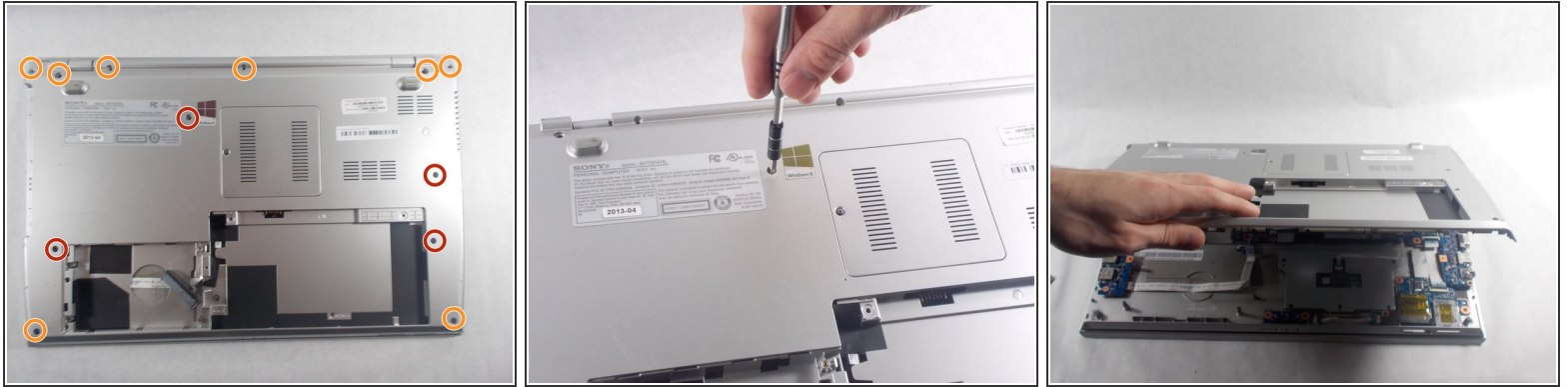
## Step 2



- Wedge the plastic opening tool between the back panel and the battery on the top left side of the device.
- Push down on the plastic opening tool until the battery lifts from the back of the laptop.
- Grab the battery and remove it from the device.



## Step 3 — Back Panel



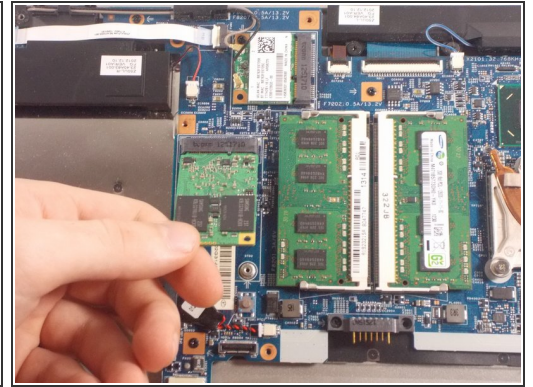
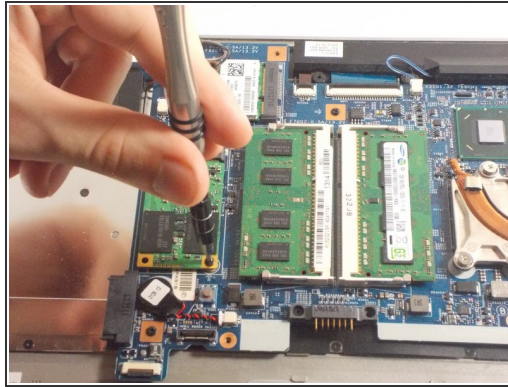
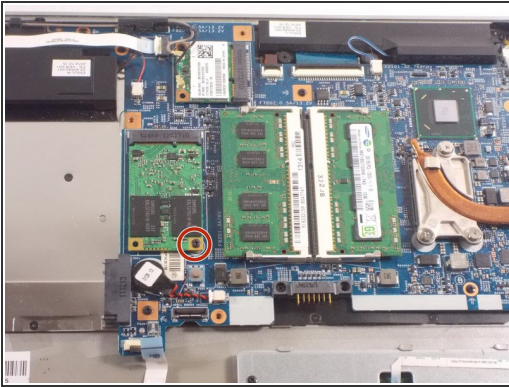
- Unscrew the three 4mm screws using a JIS #0 screwdriver.
- Unscrew the eight 7 mm screws using a JIS #0 screwdriver.
- Grab and lift the edge of the panel to pull it free from the rest of the computer.

## Step 4



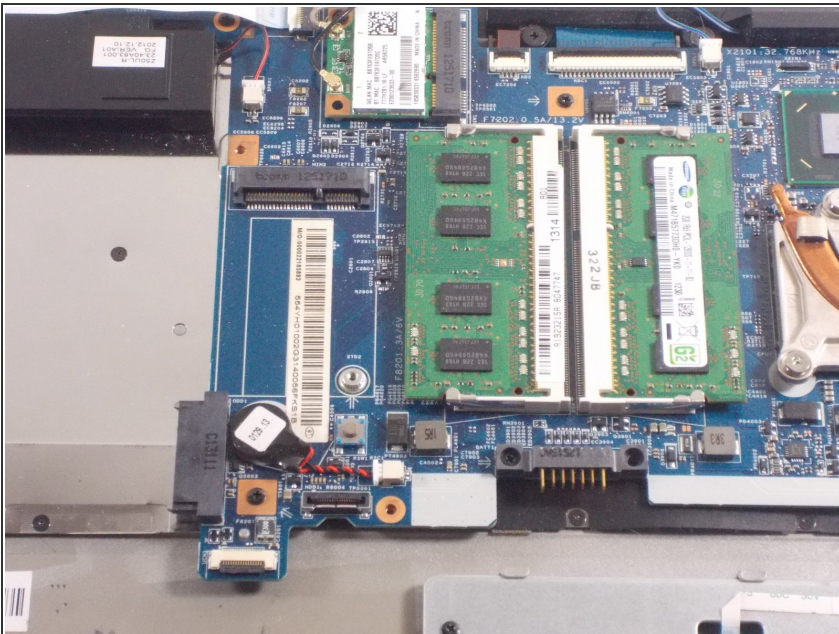
- Grab the disk drive located at the edge of the computer and pull it it out.
- Unscrew the three 7 mm screws with a JIS #0 screwdriver.

## Step 5 — SSD



- Unscrew single 4mm screw using a JIS #0 screwdriver.
- Lift up one end of the SSD.
- Pull the SSD from its port.

## Step 6



- Leave the port empty so that a new SSD can be placed inside.

To reassemble your device, follow these instructions in reverse order.