



# Dell XPS 14 L401X Bottom Cover Replacement

This guide will show you how to remove and replace the bottom cover of the Dell XPS 14 L401X laptop.

Written By: Nicole Johnson



## INTRODUCTION

To access the inner workings of the Dell XPS 14 L401X laptop, the bottom cover will need to be removed. The bottom cover protects the inside of the laptop; if it gets damaged, it will need to be replaced.




### TOOLS:

- [JIS #1](#) (1)
  - [Spudger](#) (1)
  - [iFixit Opening Tools](#) (1)
-

## Step 1 — Battery

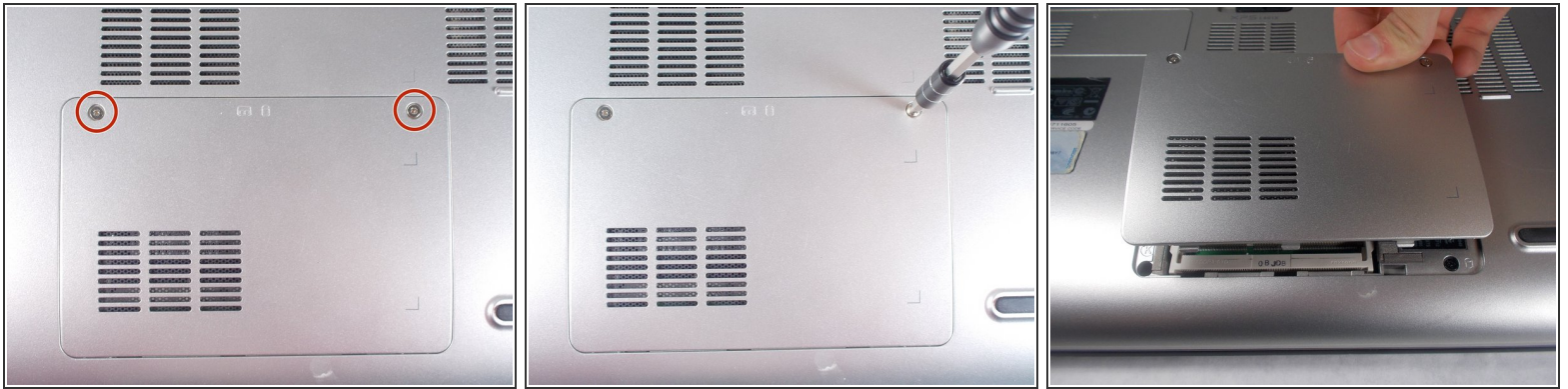


 Make sure that the laptop is shut off before attempting to remove any components from the device.

 The laptop in this example did not have a battery equipped.

- Locate the spring latch on the bottom of the device that will unlatch the battery.
- Hold the spring latch in the open position and pull the battery out of its recess.

## Step 2 — RAM



- Use a JIS 1 screwdriver to loosen the (2) captive screws from the panel.
- ⓘ The captive screws will not come off of the panel.
- Pull the panel upwards and towards the battery to remove.
- Put the panel to the side, exposing the RAM.



## Step 3



- The RAM is held by two spring clips. Pull at the two spring clips and the RAM will move upwards.

ⓘ Keep your fingers on the edge of the chip.

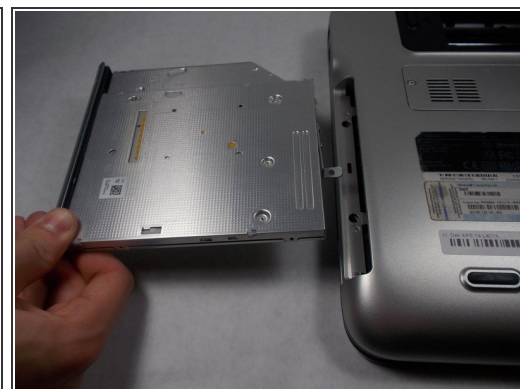
⚠ Only handle the RAM by the sides! Do not touch the circuits or the terminals to avoid contamination!

## Step 4 — Optical Drive



- Locate and remove (1) 8.5mm JIS 1 screw at the top left corner of the RAM bay.

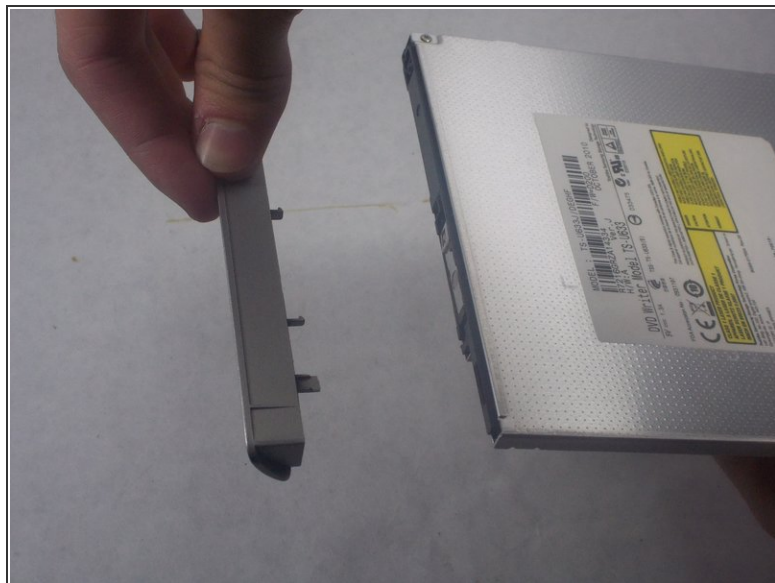
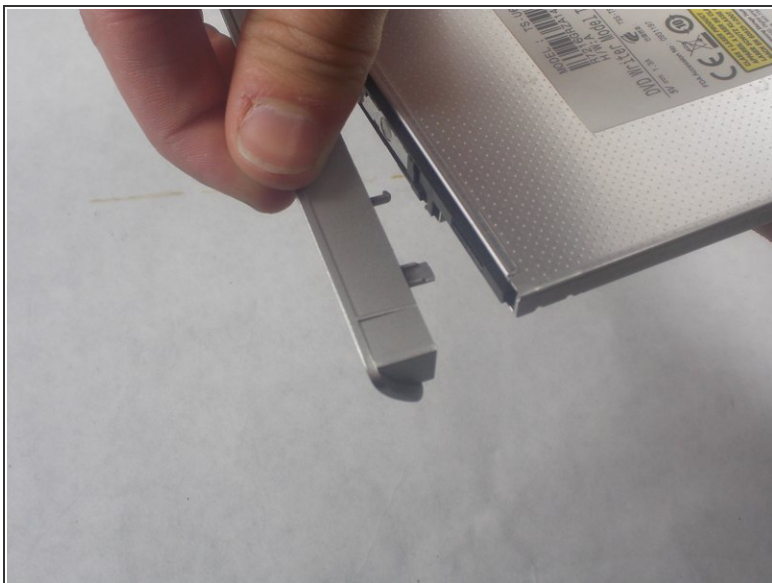
## Step 5



- Carefully pull out the optical drive from its bay.



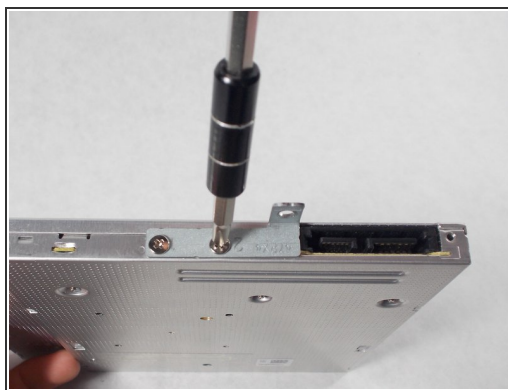
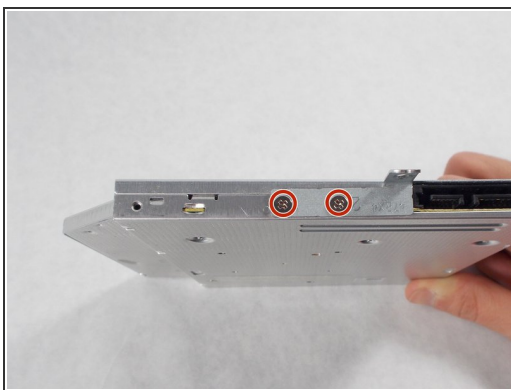
## Step 6



- Carefully pull off the decorative cover from the front of the optical drive.

**i** This decorative cover will be transferred to the new optical drive.

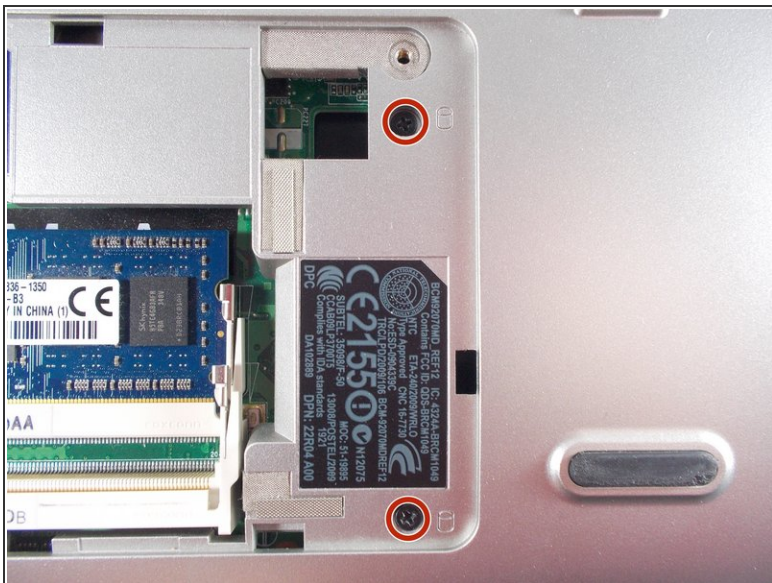
## Step 7



- Use a JIS 1 screwdriver to remove (2) 2mm screws on the drive's anchoring bracket.

**i** This bracket will be transferred to the new optical drive.

## Step 8 — Hard Drive



- Use a JIS 1 screwdriver to remove (2) 2.5mm screws located on the right side of the RAM bay.

## Step 9



- Push the hard drive to the right with a spudger to unseat it from its socket while pulling out the hard drive with your other hand.



## Step 10



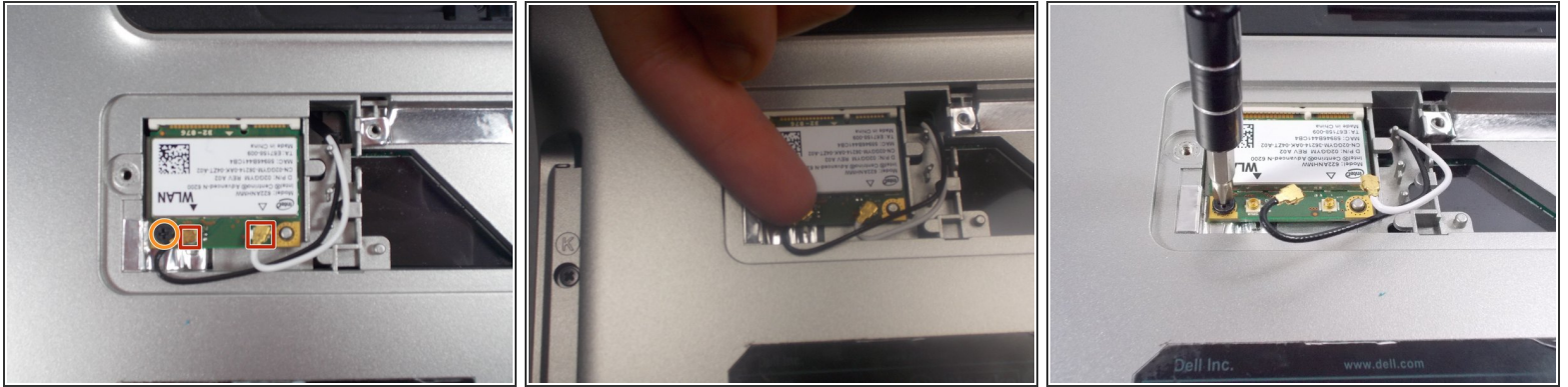
- Use a JIS 1 screwdriver to remove (1) 2.5mm screw attaching the plastic cosmetic cover to the hard drive.
- Detach the plastic cosmetic cover from the hard drive.
- ⓘ This cosmetic cover will be transferred to the new hard drive.

## Step 11 — Mini Card



- Locate the mini card access panel marked with a radio tower emblem on the bottom of the laptop near the battery bay.
- Use a JIS 1 screwdriver to loosen the captive screw securing the panel to the device.
- ⓘ The captive screw will not come off of the panel.
- Carefully remove the panel by prying it upwards, unlocking it from the tabs that are securing it in place.

## Step 12



- Disconnect the two wires on the mini card by carefully plucking them upwards by the metal contact points at the terminals.
- ⚠ Do not pluck the contacts off of the terminals by pulling on the wires, this can damage the cables.
- Remove (1) 2mm screw from the bottom left corner of the mini card with a JIS 1 screwdriver.

## Step 13



- Remove the mini card as it flips upward.



## Step 14 — Palm Rest



- Remove two 4.5mm screws with JIS 1 screwdriver marked by the letter "K" in the optical drive bay.

## Step 15



- Remove (2) 4.5mm screws with JIS 1 screwdriver marked by the letter "K" in the hard drive bay.



## Step 16



- Remove (2) 4.5mm screws with JIS 1 screwdriver marked by the letter "K" near Battery

## Step 17



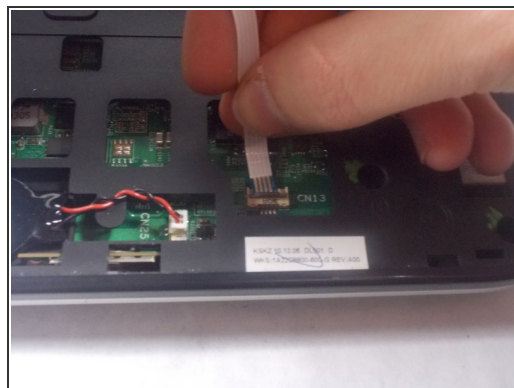
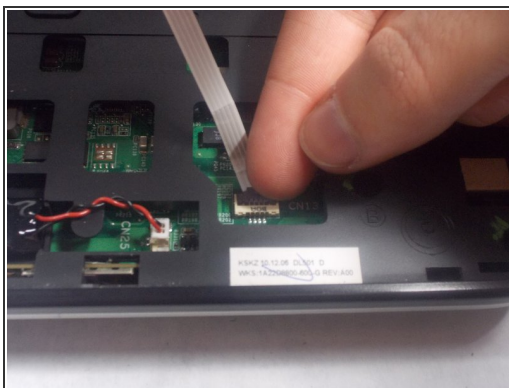
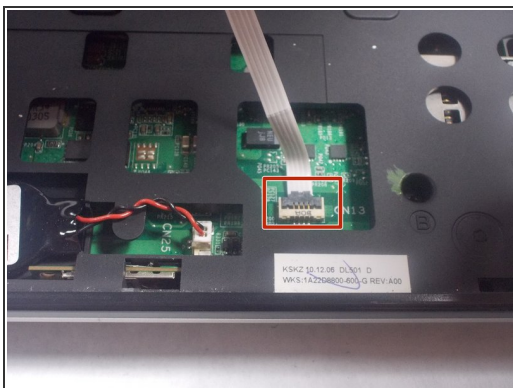
- Remove (1) 7.5mm screw with JIS 1 screwdriver marked by the letter "K" in the RAM bay.

## Step 18



- Open the display to provide room for the palm rest to come out.
- In the hard drive bay, push the "push" pad to lift up the palm rest.

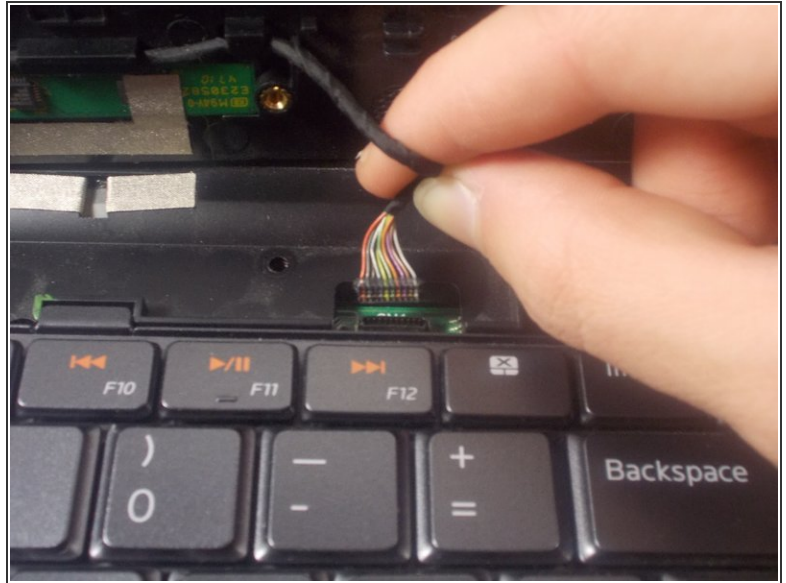
## Step 19



- Disconnect the track pad cable by flipping up the gray clamp and lifting the cable up.

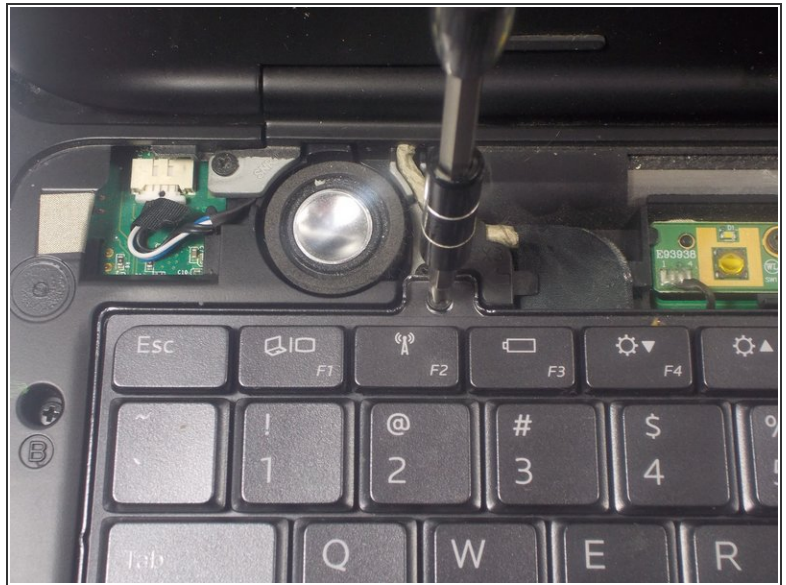


## Step 20



- Disconnect the status bar cable by pulling the pin connector upward.
- Finish lifting up the palm rest.

## Step 21 — Keyboard



- Use a JIS 1 screwdriver to remove (2) 2.5mm screws located near the top of the keyboard.



## Step 22



- Disconnect the keyboard's ribbon cable marked "A" by pushing out the two black tabs towards the ribbon cable.
- Remove the cable from its connection terminal by sliding it out. Finish lifting up the keyboard and set it to the side.

## Step 23 — Display



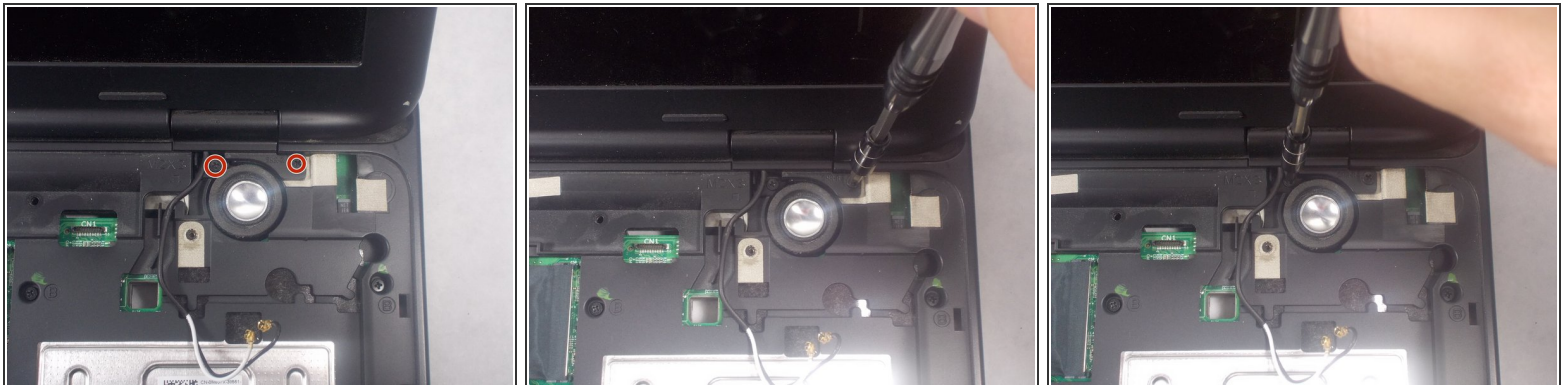
- Disconnect the display ribbon cable by pulling the cable to the right by its sheathed plastic connector.

## Step 24



- Use a JIS 1 screwdriver to remove (2) 7mm screws on the underside of the laptop near the battery bay.

## Step 25

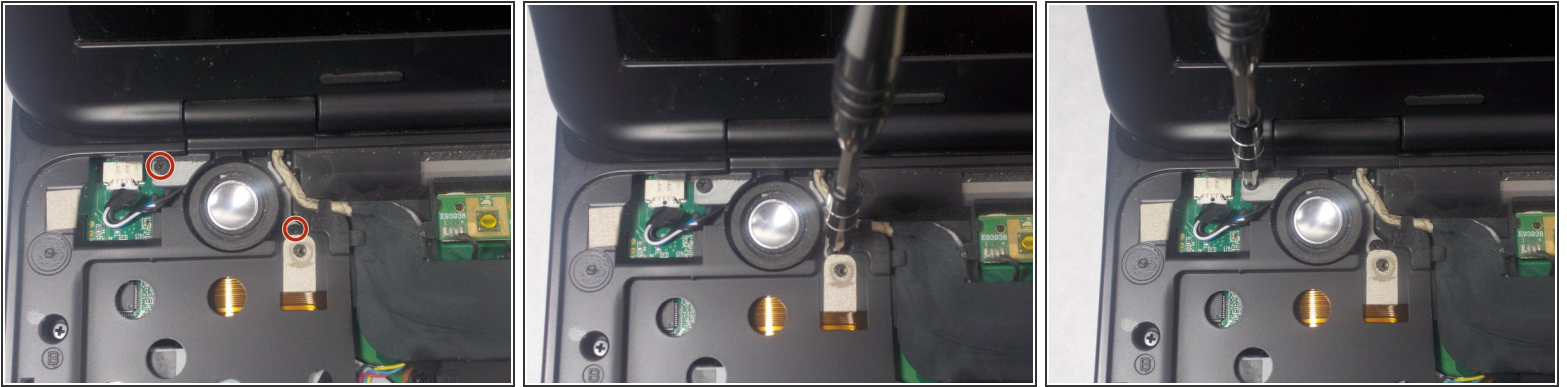


- Remove (2) 4mm screws with a JIS 1 screwdriver that are holding down the right side display anchor.

⚠ Be careful not to puncture the speaker membranes with the screwdriver.



## Step 26



- Remove (2) 4mm screws with a JIS 1 screwdriver that are holding down the left side display anchor.

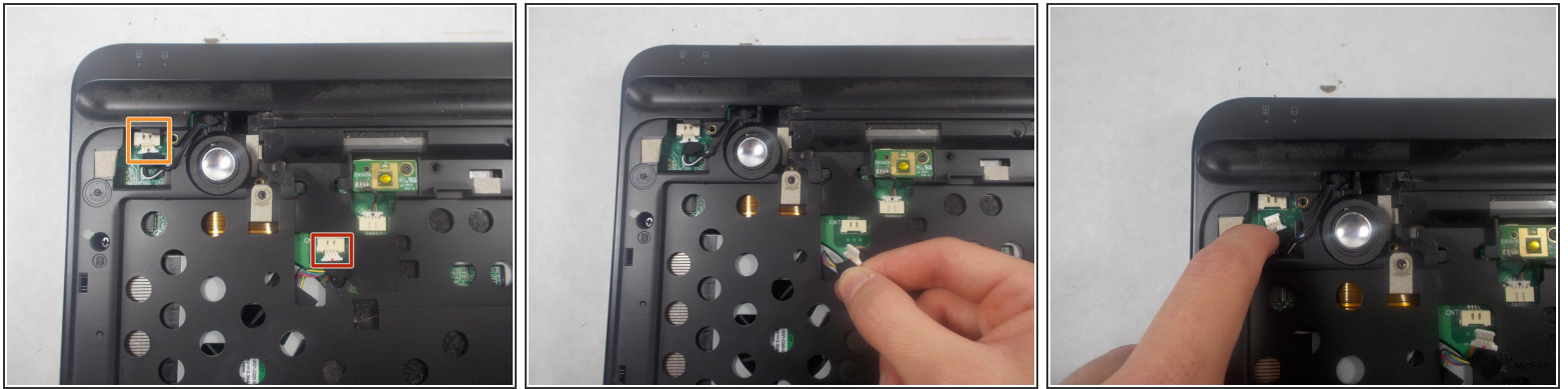
## Step 27



- Lift the display assembly up and off of the main body of the laptop.



## Step 28 — Bottom Cover



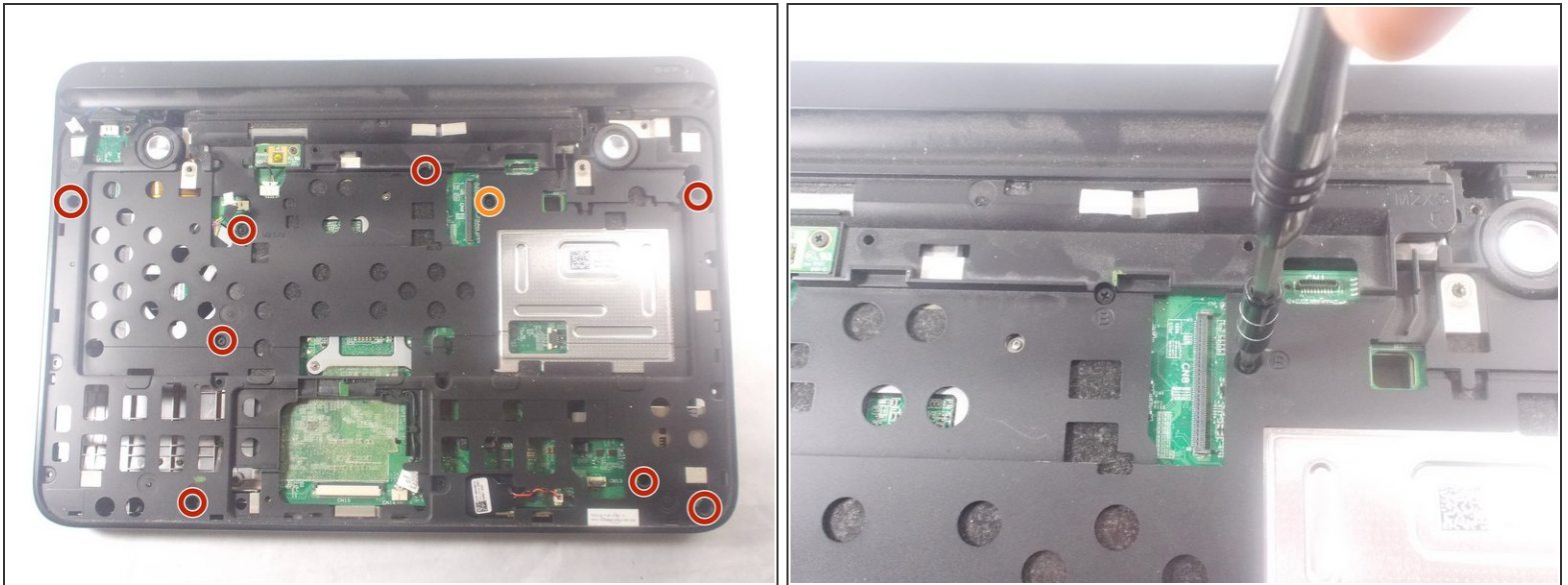
- Disconnect the cooling fan cable.
- Disconnect the speaker power cable.

## Step 29



- Remove (2) 15 mm screws located on top left and right corners on either side of the battery bay using a JIS 1 screwdriver.
- Remove (2) 2mm screws located in the battery bay using a JIS 1 screwdriver.

## Step 30



- Flip the laptop over.
- Remove (8) 4mm screws marked with the letter "B" with a JIS 1 screwdriver.
- Remove (1) 7mm screw marked with the letter "B" with a JIS 1 screwdriver.

## Step 31



- Separate the bottom cover from the top cover with plastic prying tool and finish lifting the bottom cover off.

To reassemble your device, follow these instructions in reverse order.