



Fossil Q Marshal Gen 2 Disassembly

This guide will show you how to replace a malfunctioning or damaged screen.

Written By: Matthew Tucker



INTRODUCTION

This guide shows the general disassembly of the watch. This guide serves as a prerequisite for all guides on internal component replacement . When following this guide be extra careful when undoing wire connections because they can be fragile.



TOOLS:

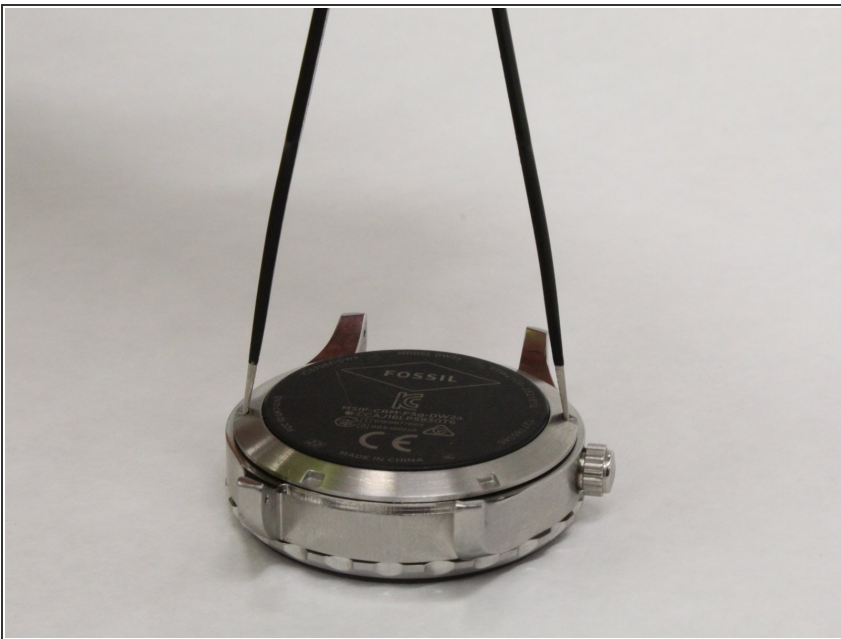
- [Spudger](#) (1)
 - [Tweezers](#) (1)
-

Step 1 — Back Cover



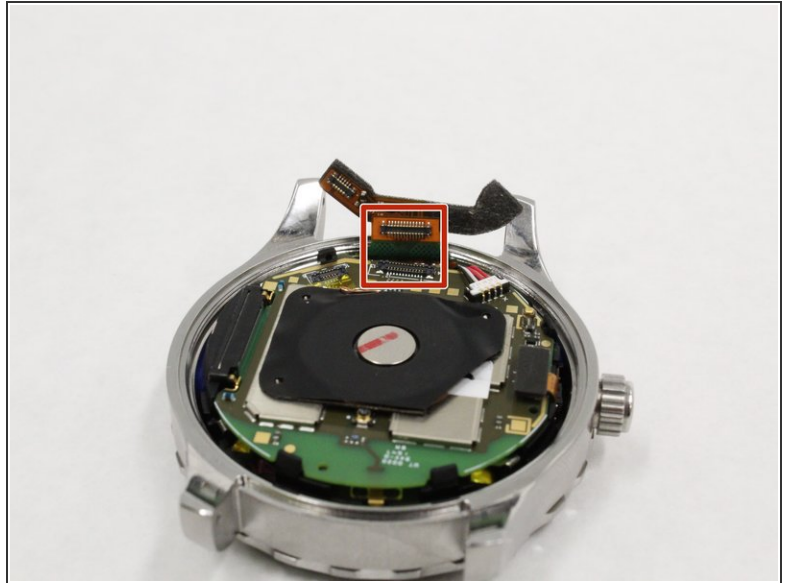
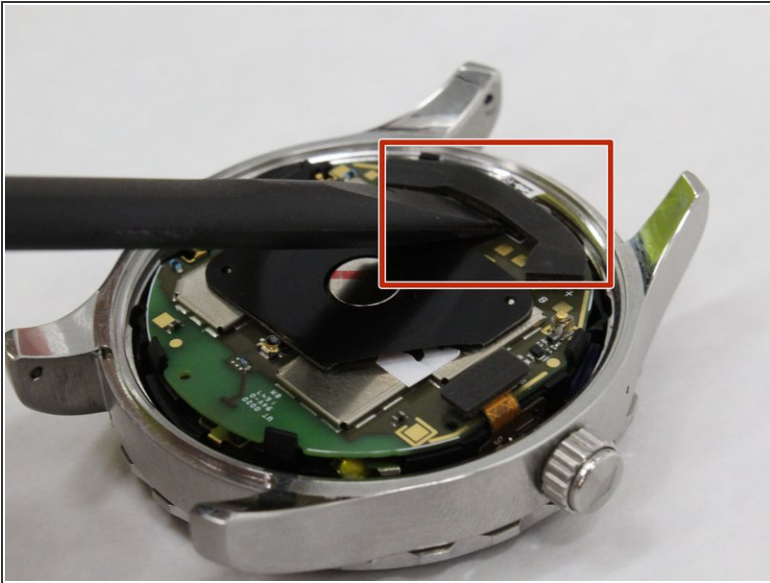
- Squeeze retaining pins together to release chain from watch body. This can be done by hand or with tweezers.
- Remove chain from opposing side of watch body.

Step 2



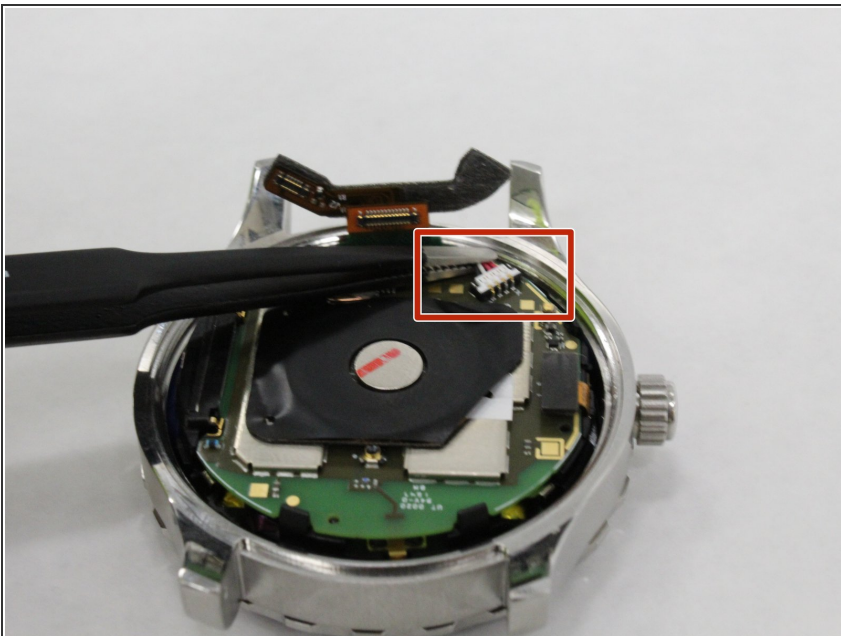
- Use tweezers to grip the notches on the back cover, then unscrew the back cover (counter-clockwise) from the watch housing.
- ⓘ There is an actual tool made to remove this back cover, using the right tool may save you from scratching the back of watch with tweezers. The backcover tool can be purchased online, a local jeweler may also be willing to remove it for you.

Step 3



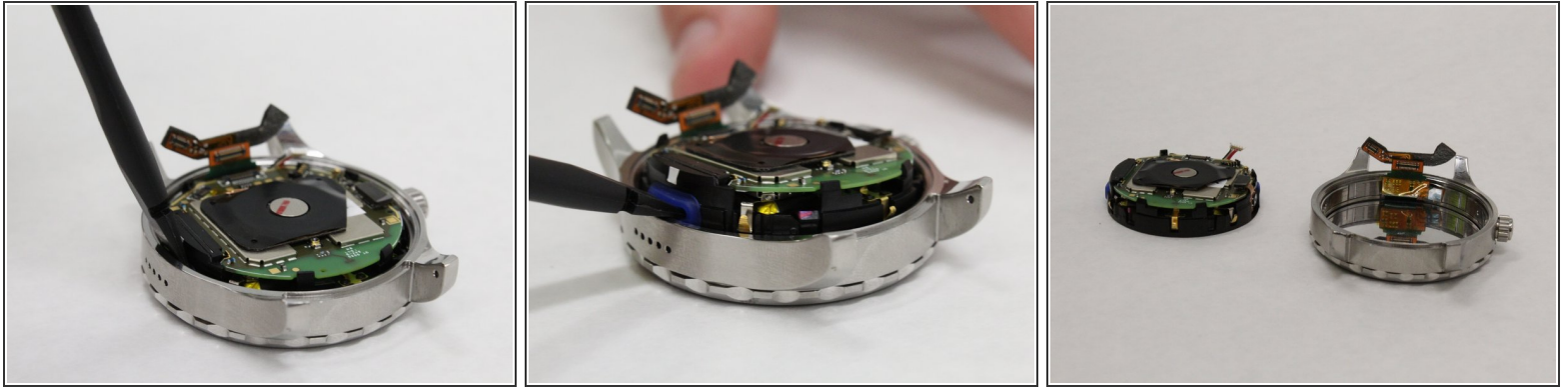
- Utilize tweezers or a spudger or your fingers to pull the black wire connector from the motherboard.
- Utilize a spudger to pull the orange connector off of the motherboard.

Step 4



- Utilize tweezers to pull the white battery connector from the motherboard.

Step 5



- The internal electronics can now be pulled out of the watch as one unit leaving the screen remaining in the watch housing.
- Taking the flat end of the spudger, pry it up.

To reassemble your device, follow these instructions in reverse order.