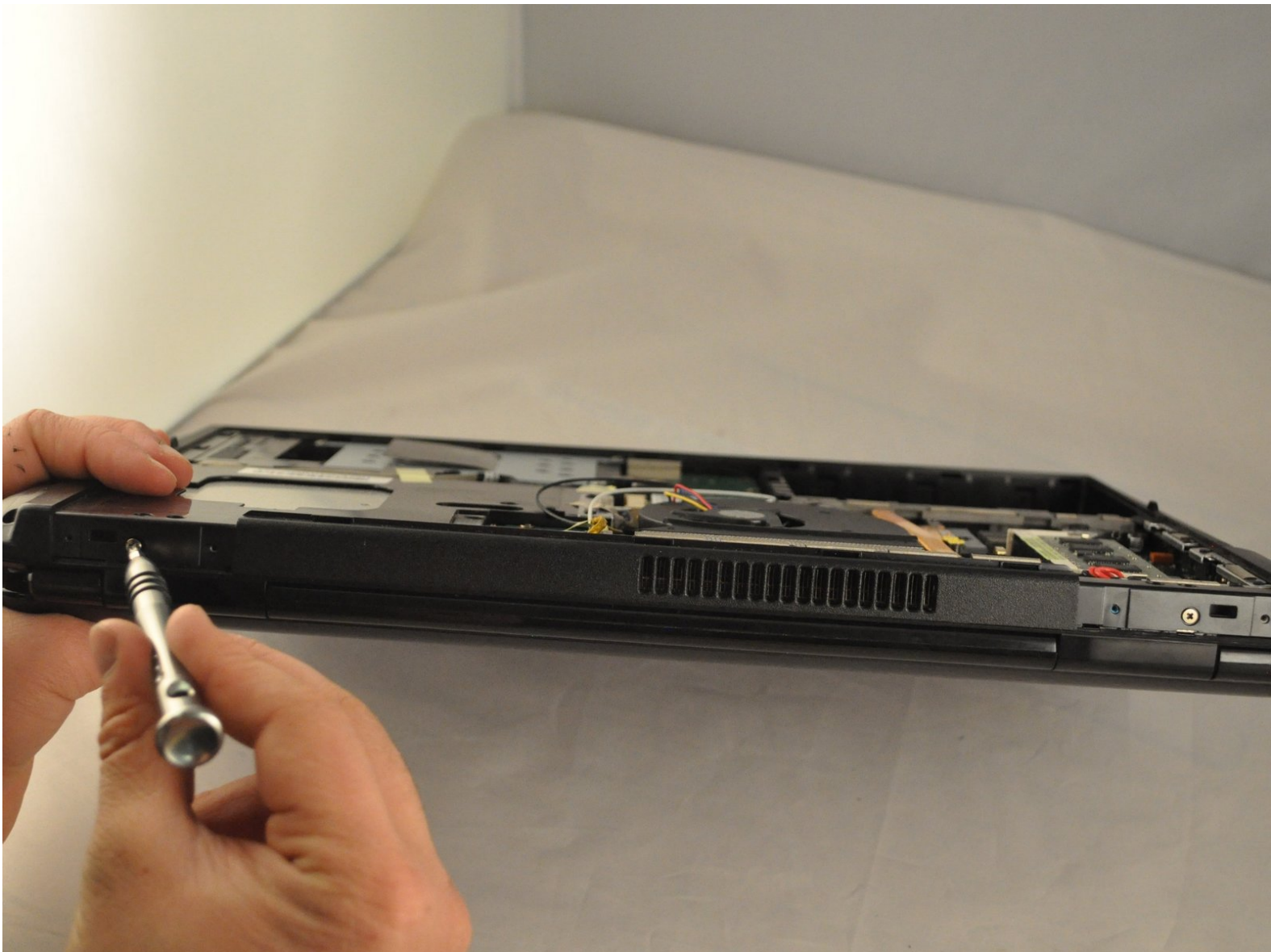




# Asus K50IJ Charging Port Replacement

This is a charging port replacement guide for the ASUS K50IJ.

Written By: Andrew Anderson



## INTRODUCTION

Charging port pieces inside of the laptop may get damaged and not allow it to charge. This guide will help you replace the charging port inside the ASUS K50IJ.

---

### TOOLS:

- [Phillips #1 Screwdriver](#) (1)
  - [Metal Spudger](#) (1)
-

## Step 1 — Battery



- Slide the tab over to unlock the battery cover located on the bottom-left corner of the laptop.

## Step 2



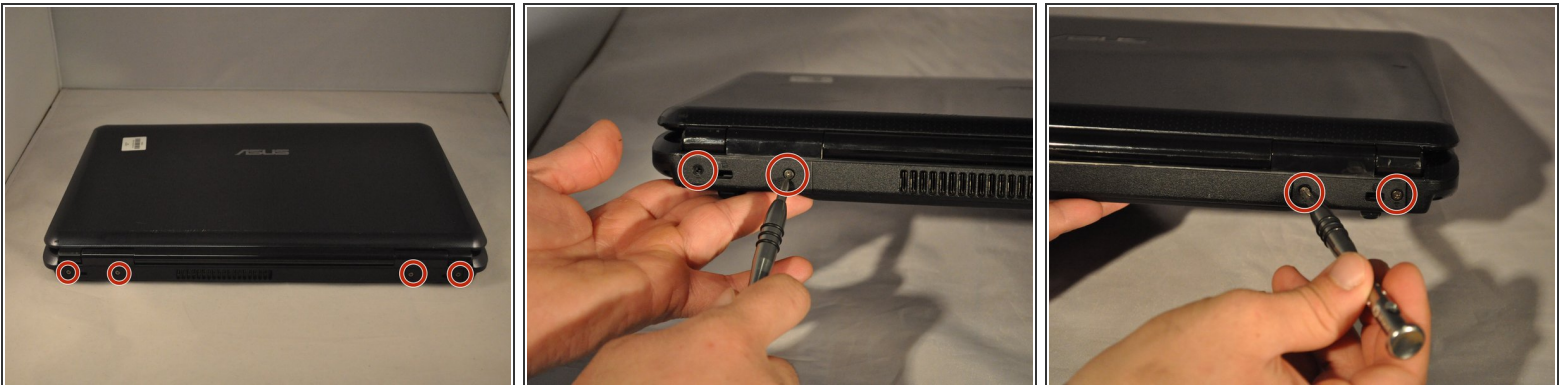
- Lift the exposed lip and remove the battery cover.

## Step 3



- Press the tabs on the battery and lift them. The battery should come out easily.

## Step 4 — Fan



- Using the PH1 screwdriver, remove the four 4 .75 mm screws that are located on the vent panel.

## Step 5



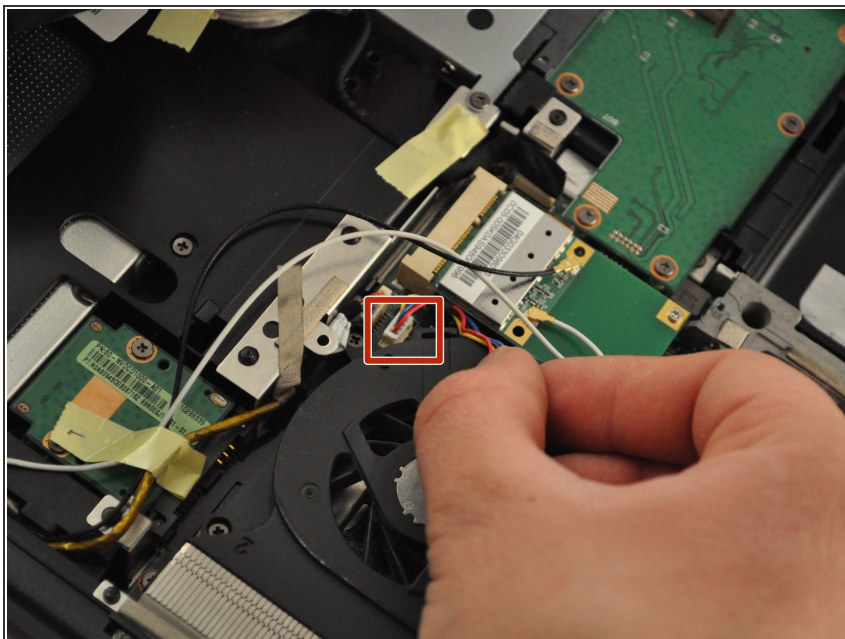
- Remove the one .5 mm screw located in the top right corner of the battery compartment.

## Step 6



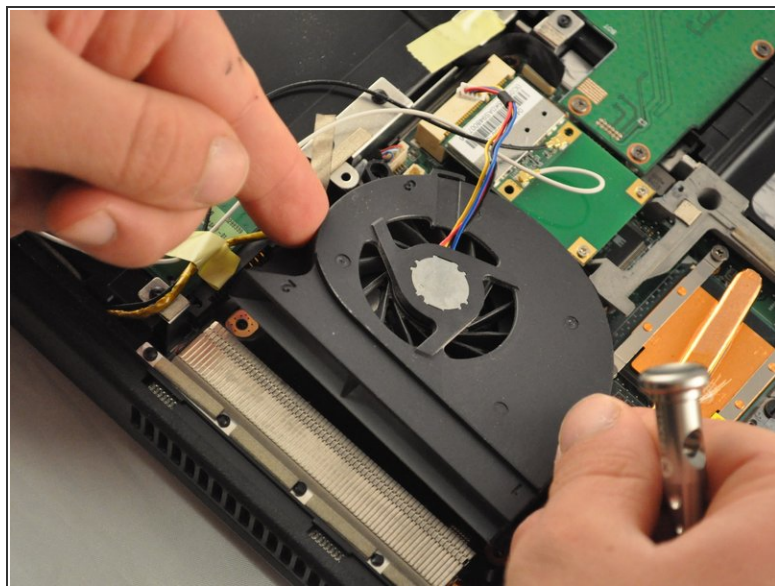
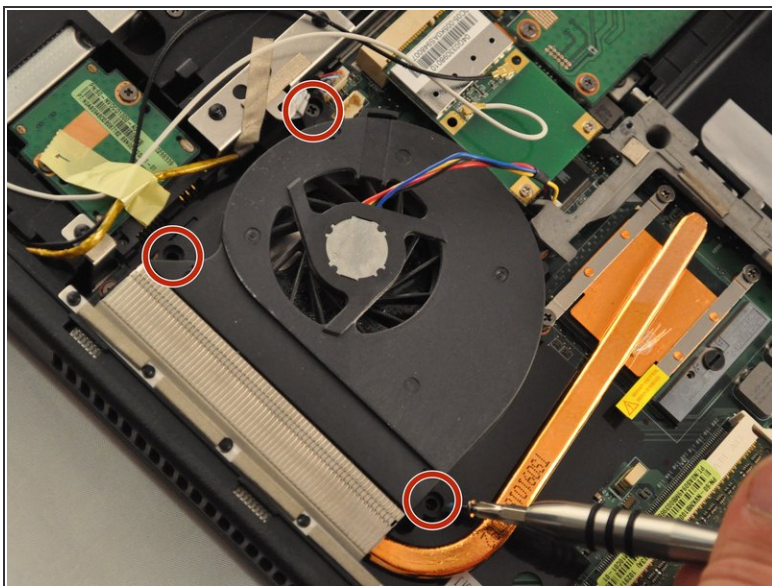
- Remove the bottom panel by sliding it toward the hinges and lifting the back panel up.

## Step 7



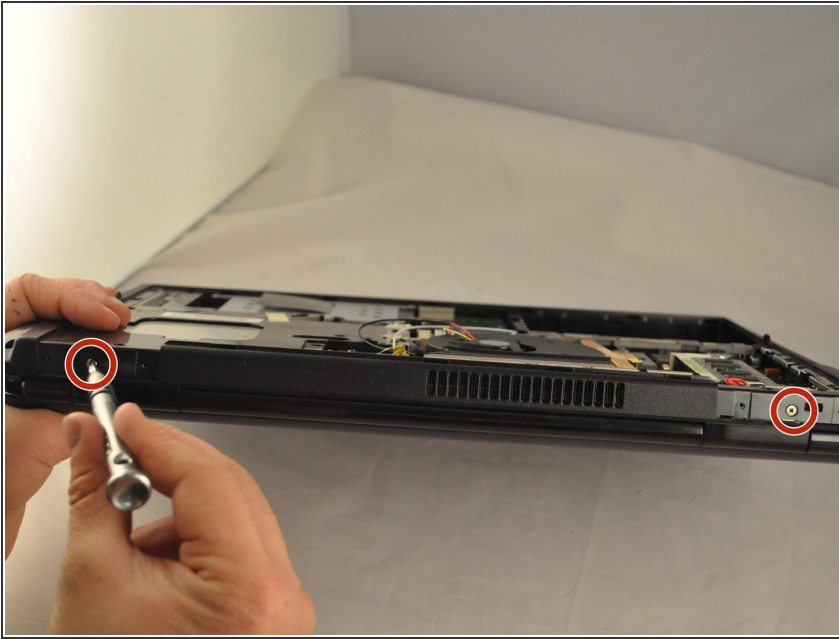
- Unplug the wire cable attached to the fan by pulling it out .

## Step 8



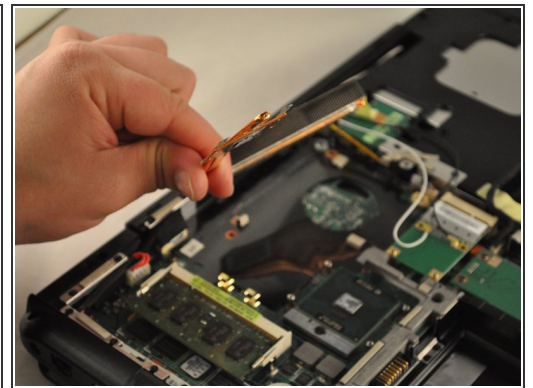
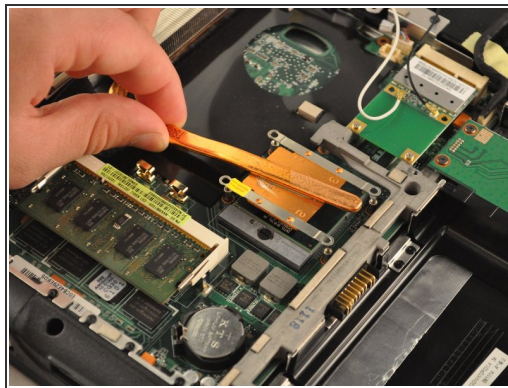
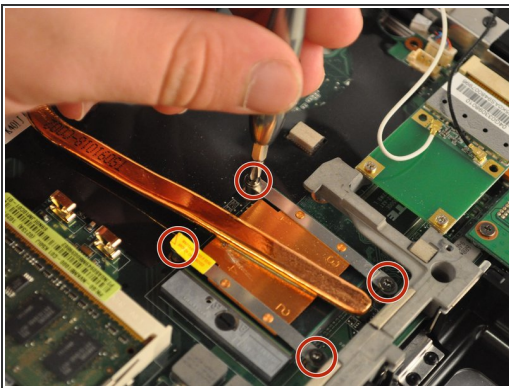
- Using the PH1 screwdriver, remove the 3 .75mm screws labeled as 1, 2, and 3 on the fan. **NOTE** these screws have the labels "1", "2", and "3" next to them.
- Lift the fan up with your fingers.

## Step 9 — Charging Port



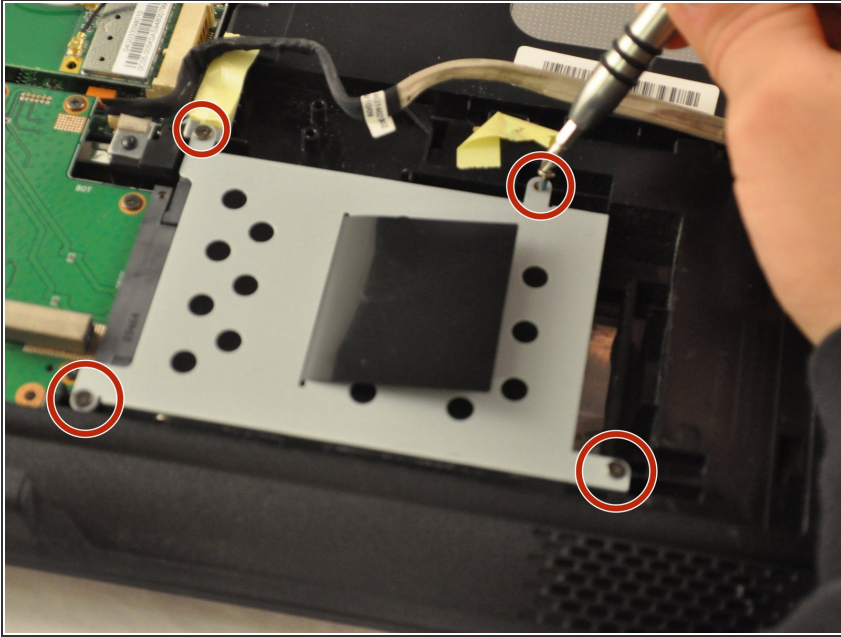
- Using the PH1 screwdriver remove the two .75 mm screws from the hinge side of the laptop.

## Step 10



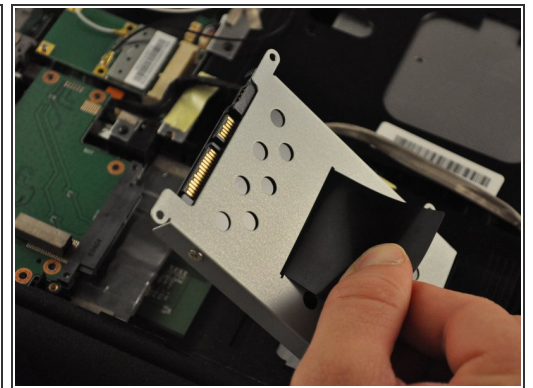
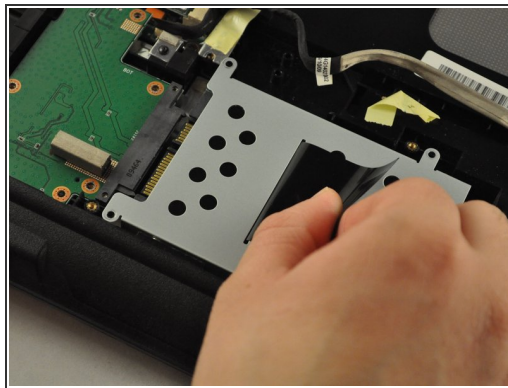
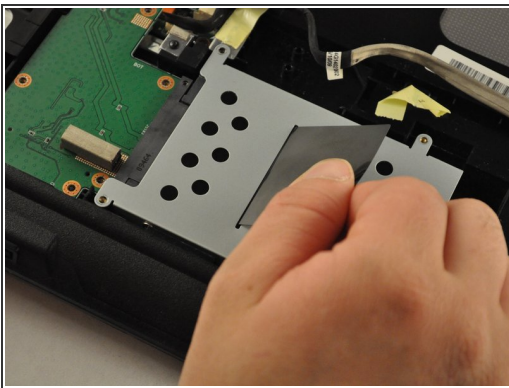
- Using the PH1 screwdriver, remove the four .75 mm screws from the copper heat sync. They will be labeled 1-4.
- Pull the copper heat sync out of the laptop.

## Step 11



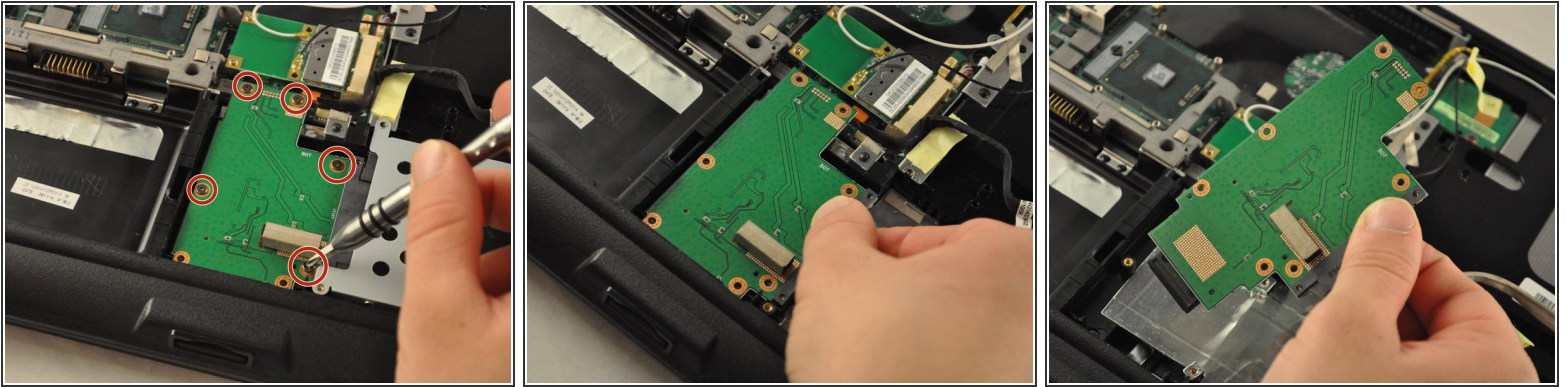
- Using the PH1 screwdriver, remove four .75 mm screws from the driver, located in the bottom-right corner of the laptop.

## Step 12



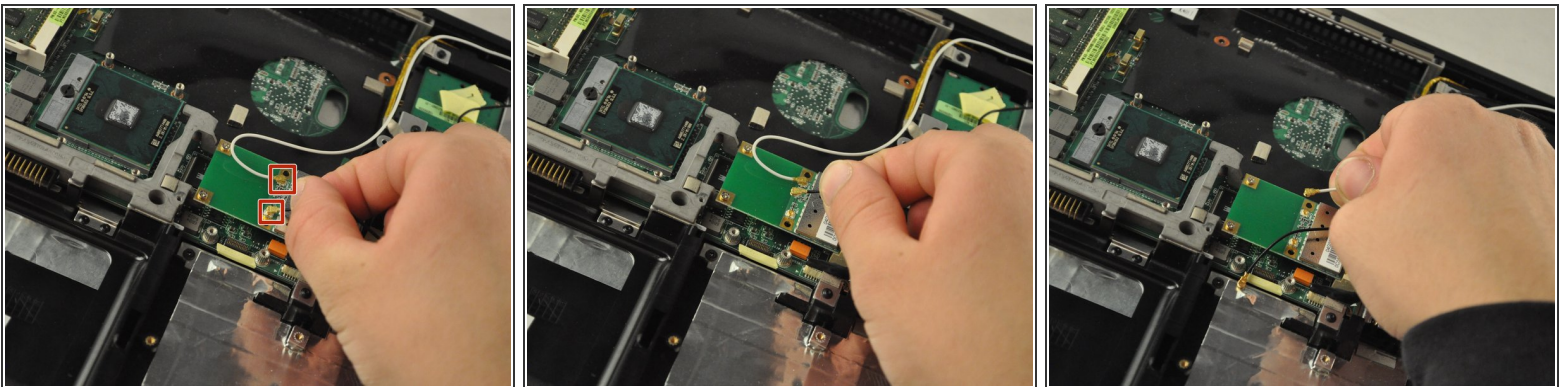
- Pull on the black tab on the driver to slide the driver back, and lift the driver out of the laptop.

## Step 13



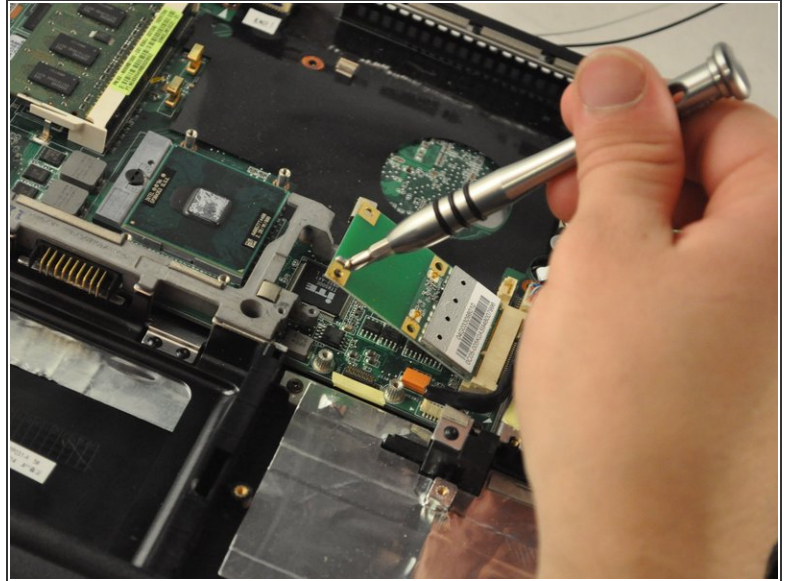
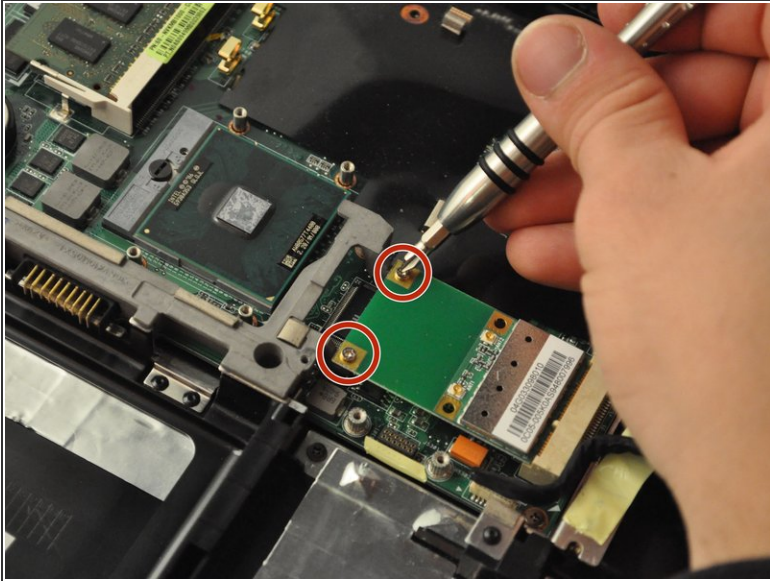
- Using the PH1 screwdriver, remove the five .5 mm screws from the SD card reader, located in the bottom-middle corner of the laptop.
- Slide the SD card reader away and out.

## Step 14



- Detach the white and black wires from the Wi-Fi card, located in the central area of the laptop.

## Step 15



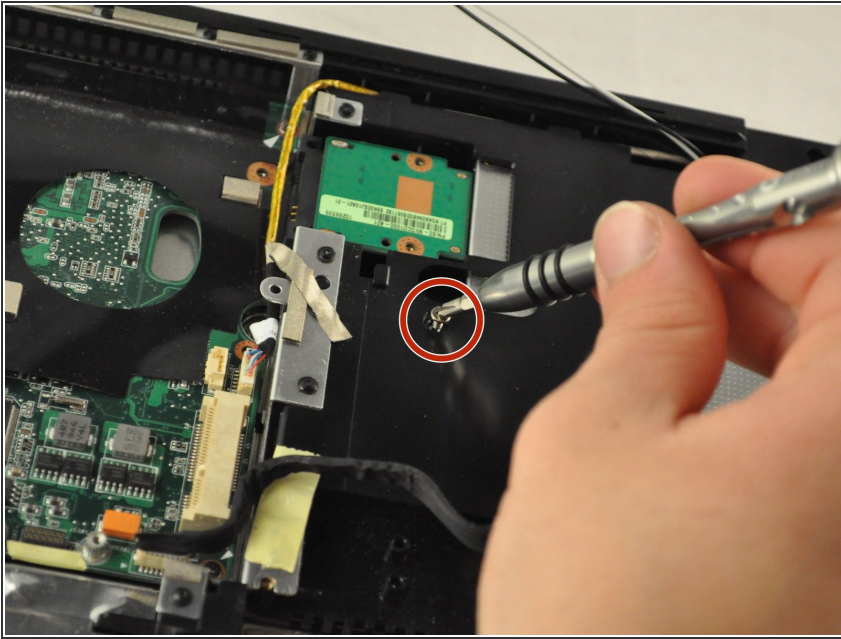
- Using the PH 1 screwdriver, remove the two .25 mm screws from the Wi-Fi card.

## Step 16



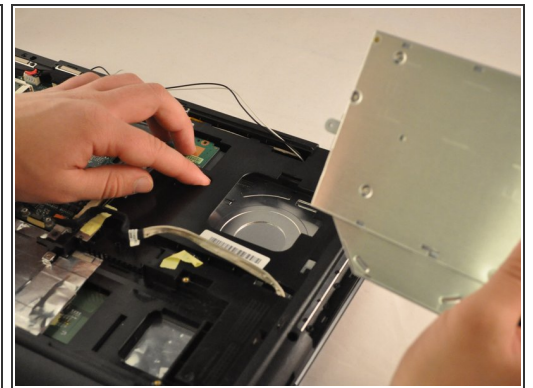
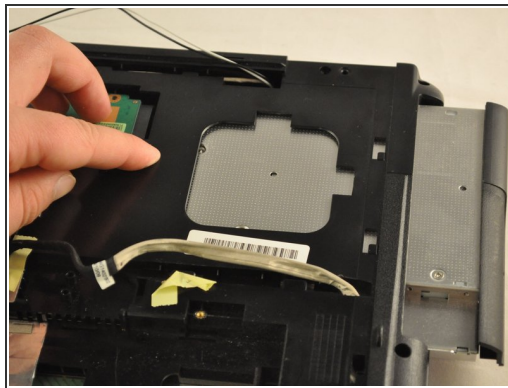
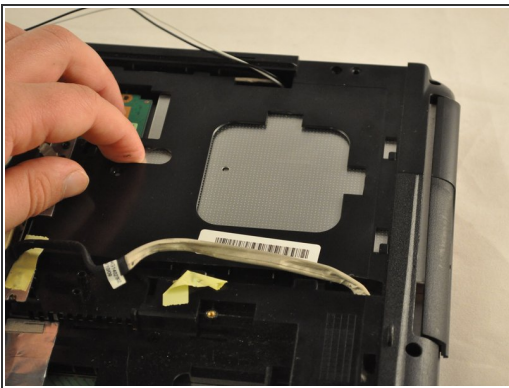
- Slide the Wi-Fi card out of its slot to remove.

## Step 17



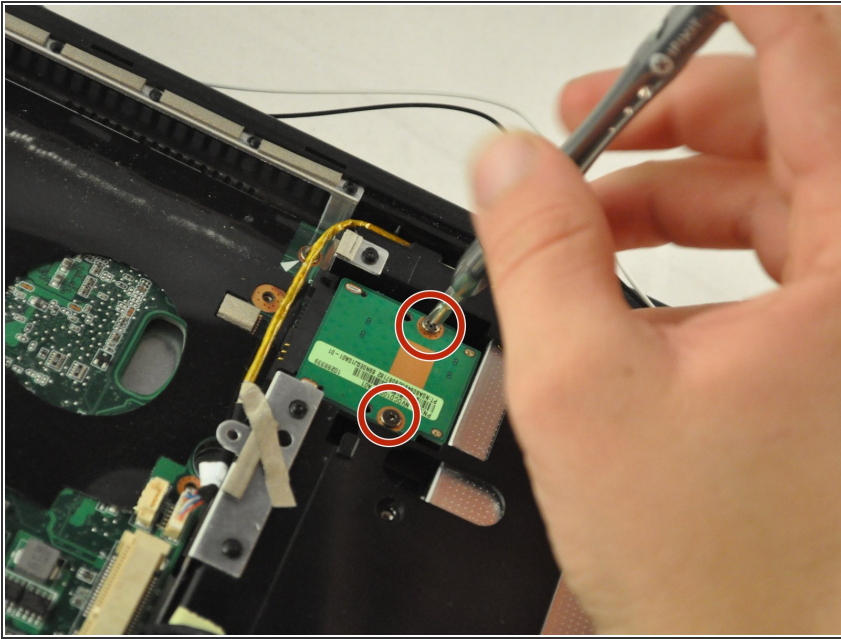
- Using the PH1mm screwdriver, remove one .5 mm screw from the disk drive, located in the top-right corner of the laptop.

## Step 18



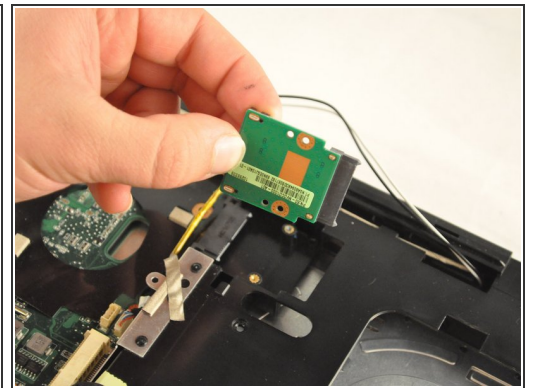
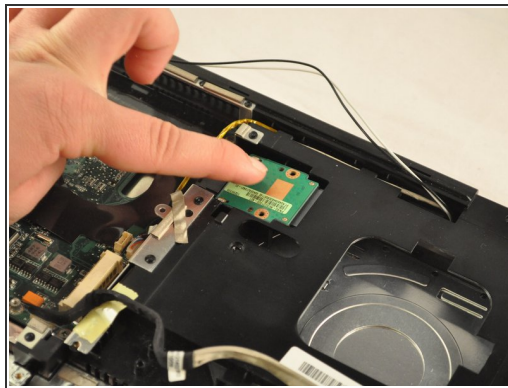
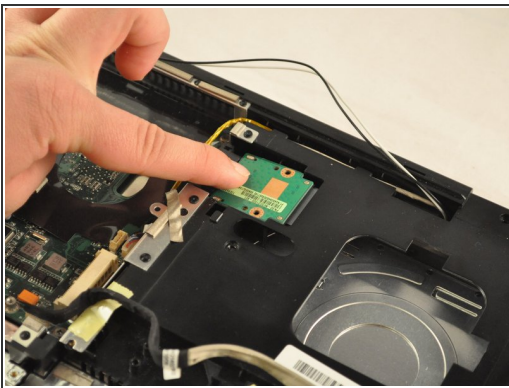
- Slide the disc drive out of its slot.

## Step 19



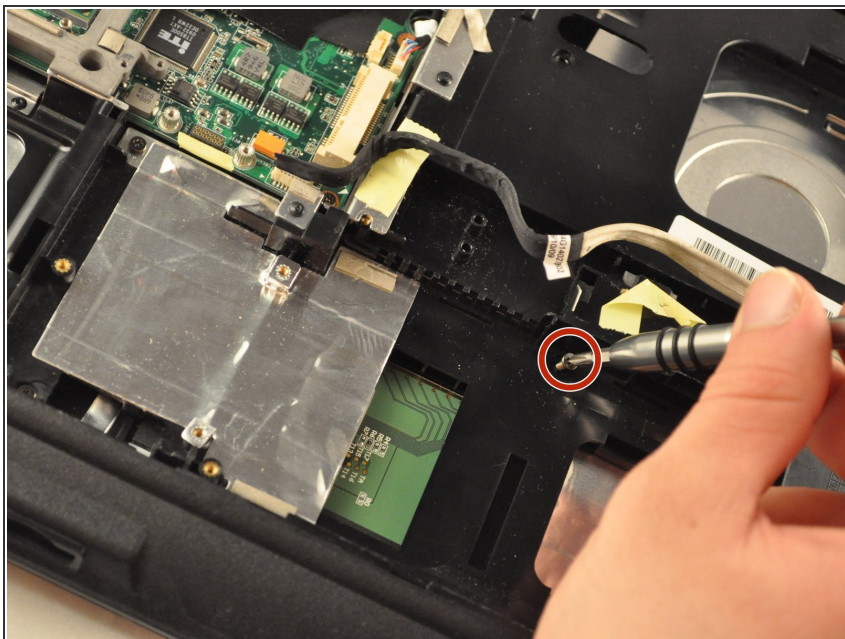
- Using the PH 1 screwdriver, remove the two .5 mm screws from the RAM drive.

## Step 20



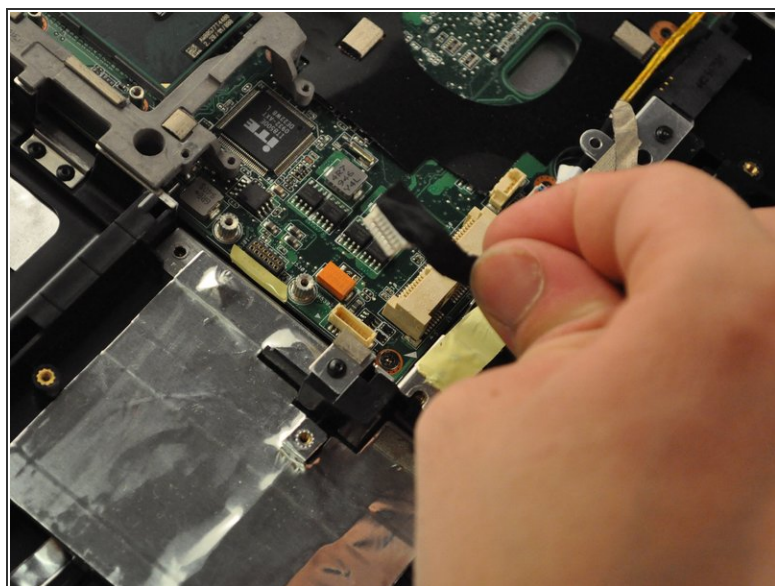
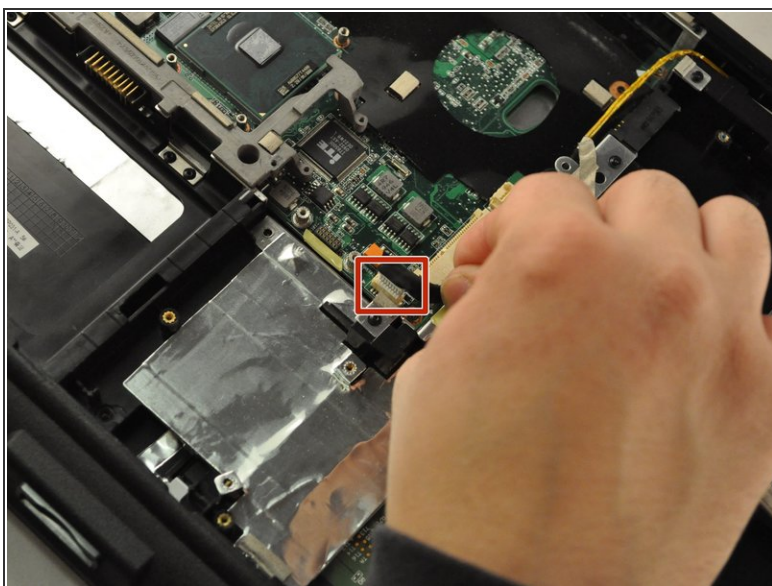
- Slide and lift the RAMdrive out of its port.

## Step 21



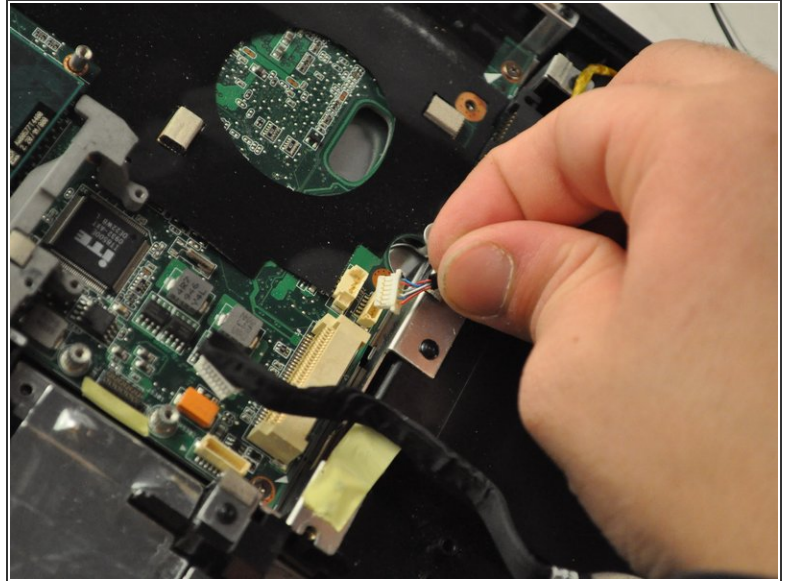
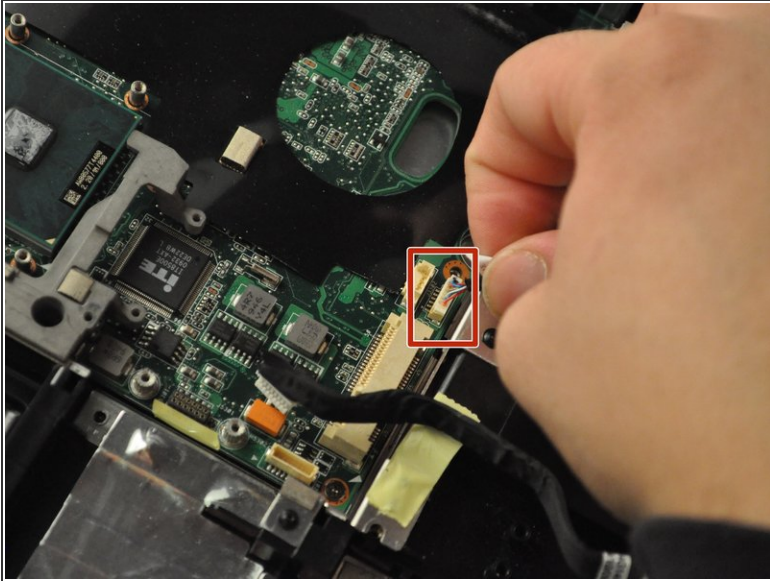
- Using the PH1 screwdriver, remove the .75 mm screw from the plastic housing corner, located in the bottom-right corner of the laptop.

## Step 22



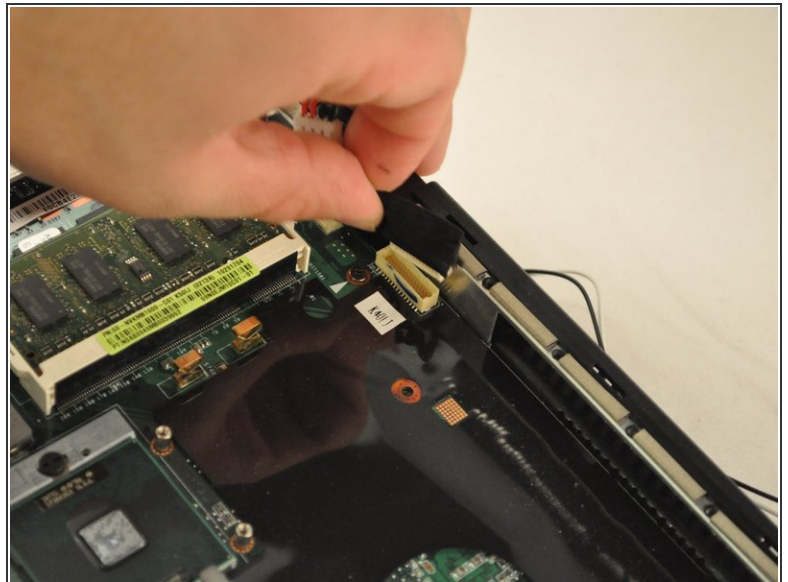
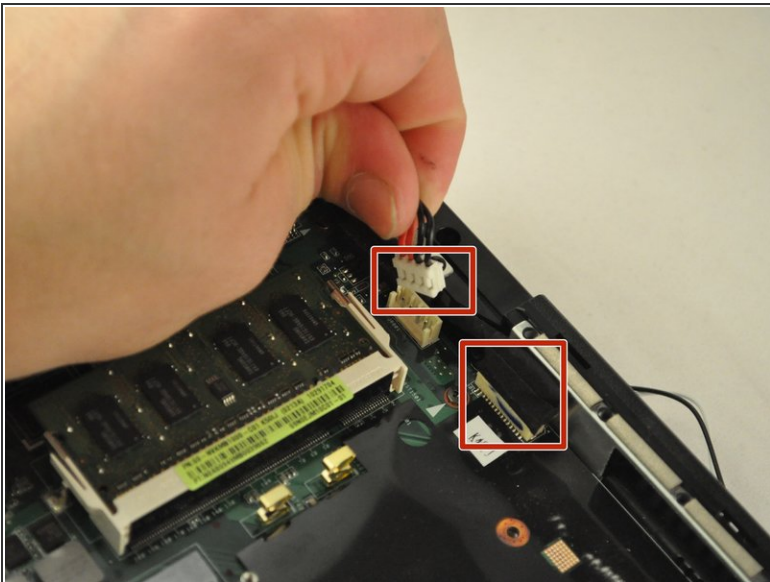
- Unplug the black cable from the central area of the laptop.

## Step 23



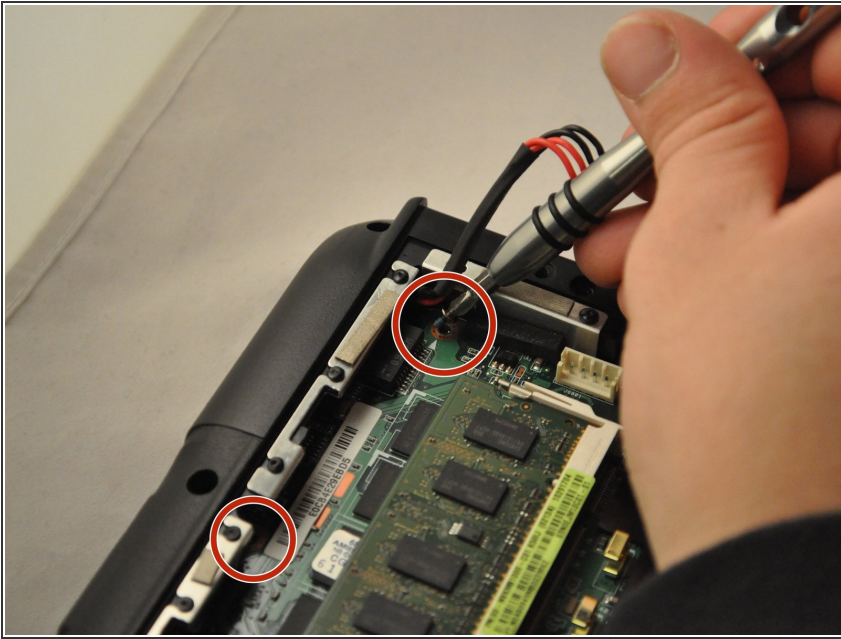
- Unplug the wire cable in the central area of the laptop.

## Step 24



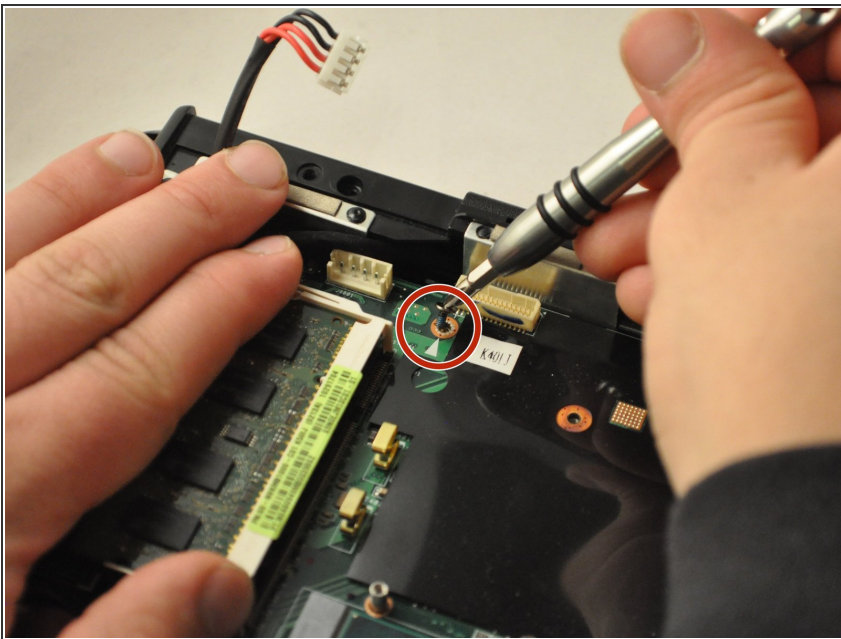
- Unplug the wire and black cables on the motherboard, located in the upper-left corner of the laptop.

## Step 25



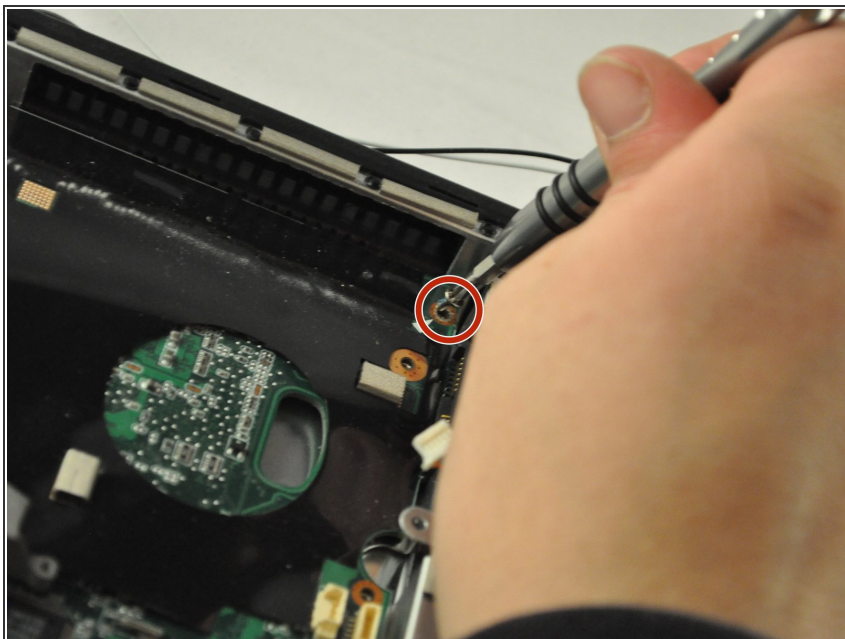
- Using the PH1 screwdriver, unscrew the two .75 mm screws from the top-left corner of the motherboard.

## Step 26



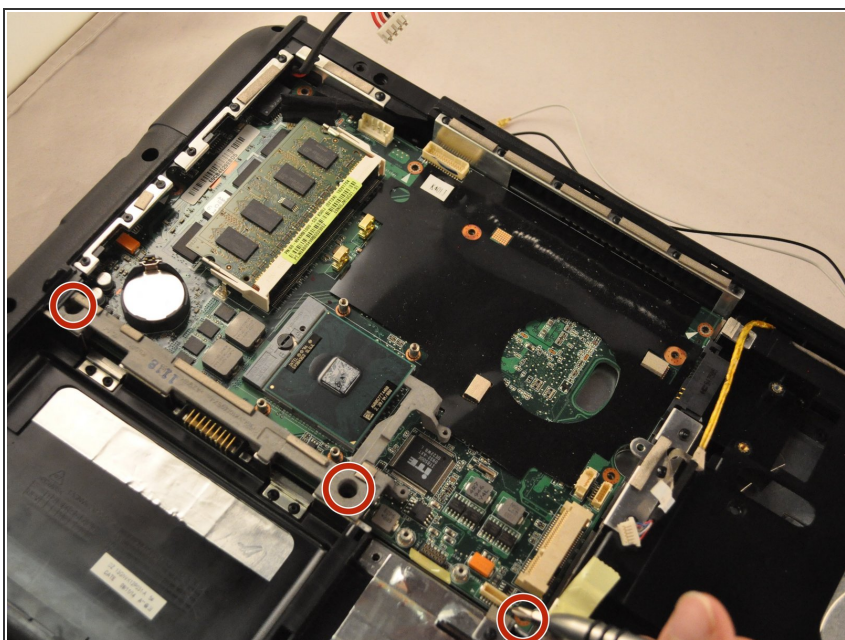
- Using the PH 1 screwdriver, remove the .75 cm screw from the top-middle section of the motherboard.

## Step 27



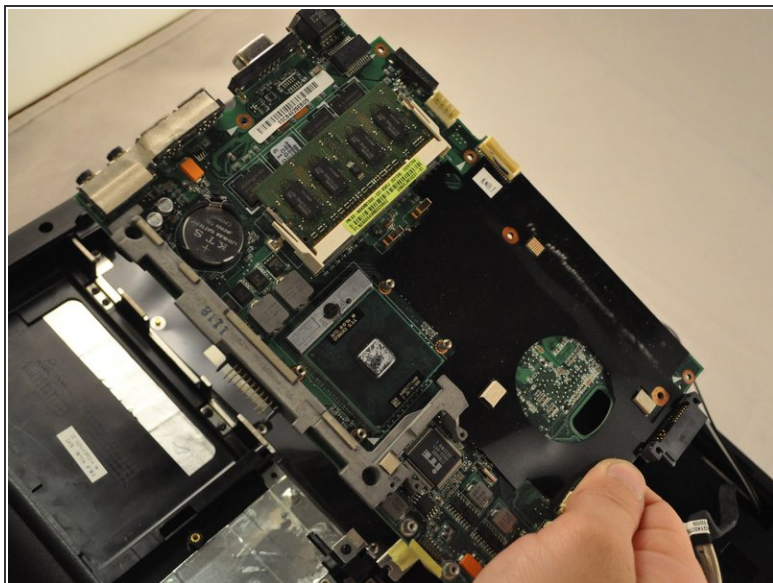
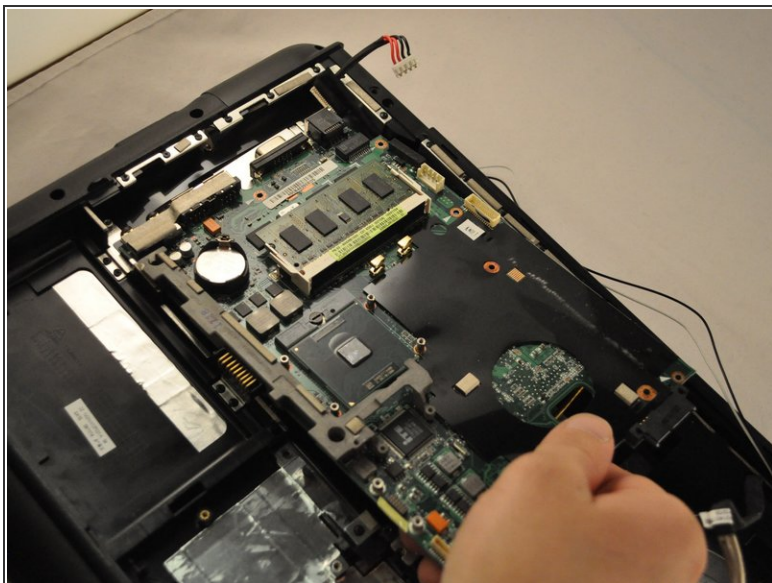
- Using the PH1 screwdriver, remove the .75 mm screw from the top-middle corner of the motherboard.

## Step 28



- Using the PH1 screwdriver, remove the three .75 mm screws from the bottom corner of the motherboard.

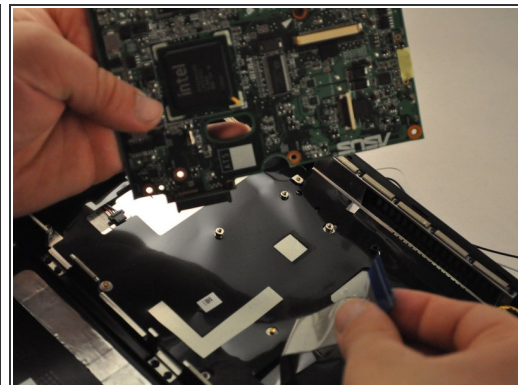
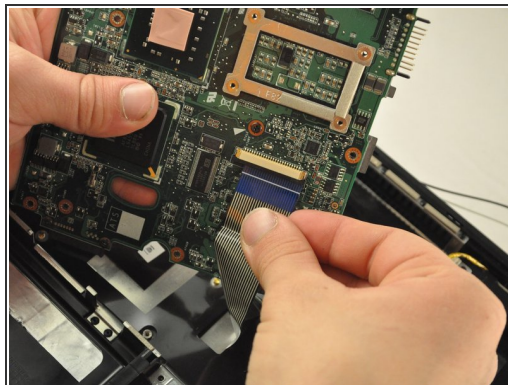
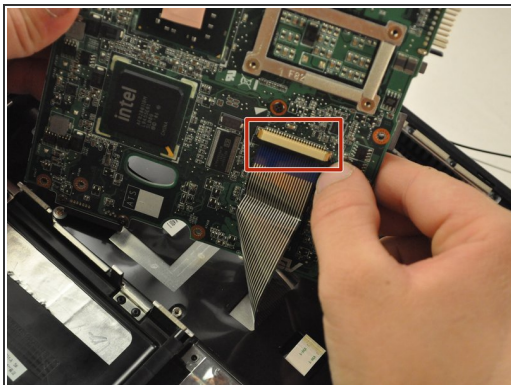
## Step 29



⚠ There is a ribbon cable connected to the back of the motherboard. Be careful not to break the ribbon cable.

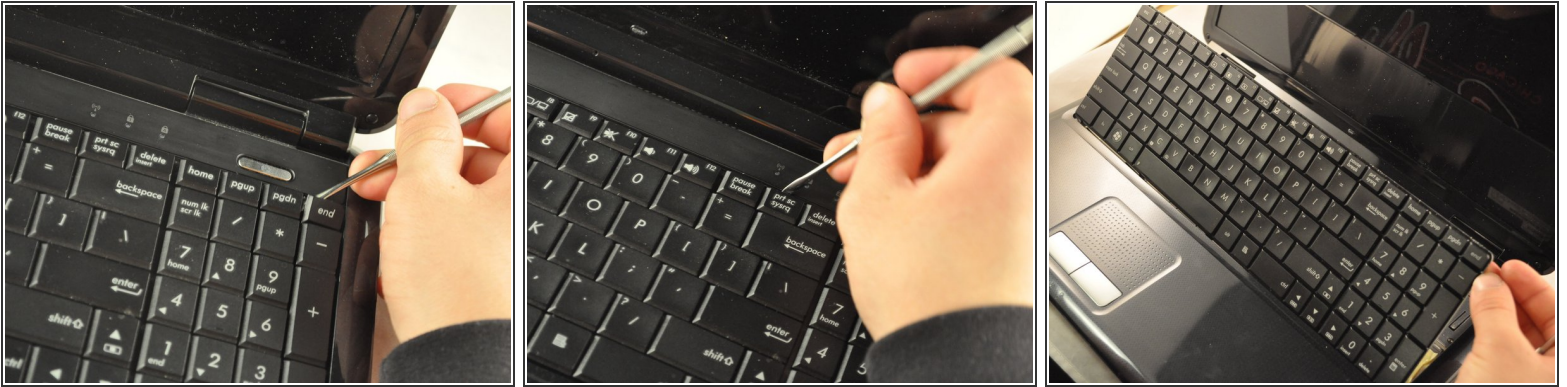
- Slide the motherboard to the right and lift it up, but do not pull it completely out.


## Step 30



- Gently unplug the ribbon cable from the underside of the motherboard.

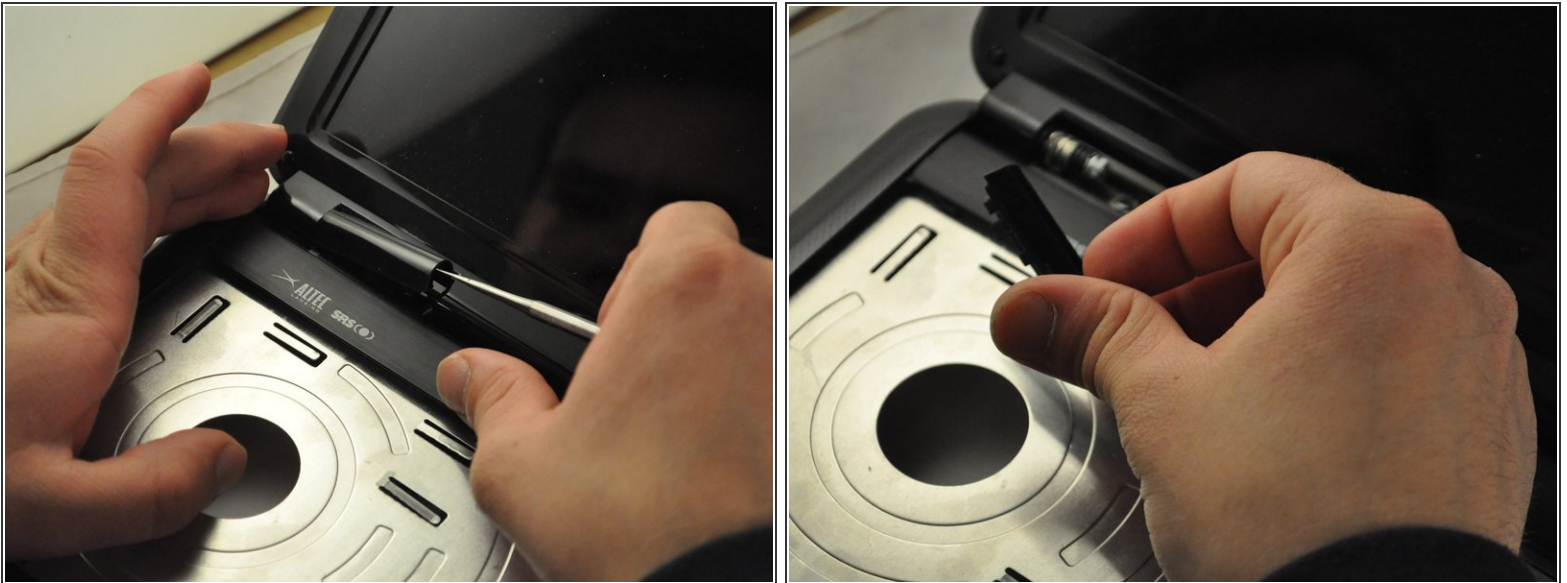
## Step 31



 The ribbon cable that was plugged into the motherboard is attached to the keyboard. Be sure not to damage it.

- Use the metal spudger or opening tool across the top edge of the keyboard to pop it out.

## Step 32



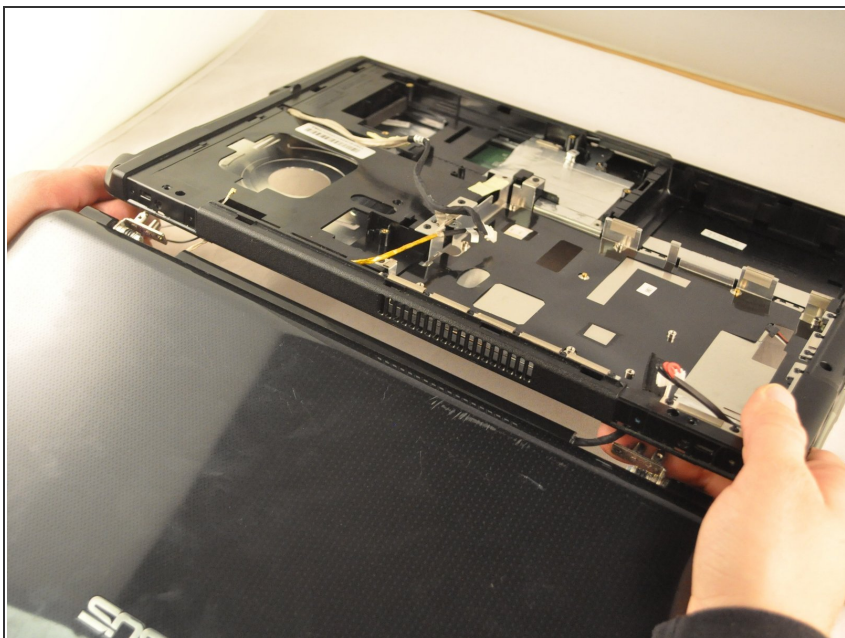
- Use the metal spudger or opening tool to pop out the plastic hinge covers.

## Step 33



- Use the PH1 screwdriver to remove the .75 mm screws from the hinges. Each hinge has one screw.

## Step 34



- ⚠ Be careful not to damage the cables that are attached to the screen frame. Be sure to pull them through the laptop carefully.
- The screen should separate from the rest of the laptop.

## Step 35



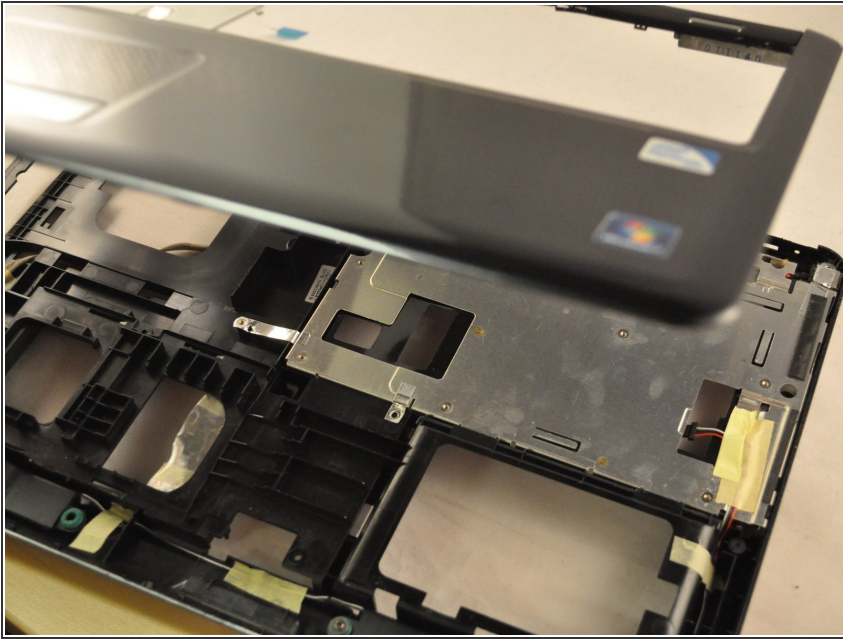
- Using the PH1 screwdriver, remove the .75 mm screw from the bottom-middle section where the keyboard was previously covering.

## Step 36



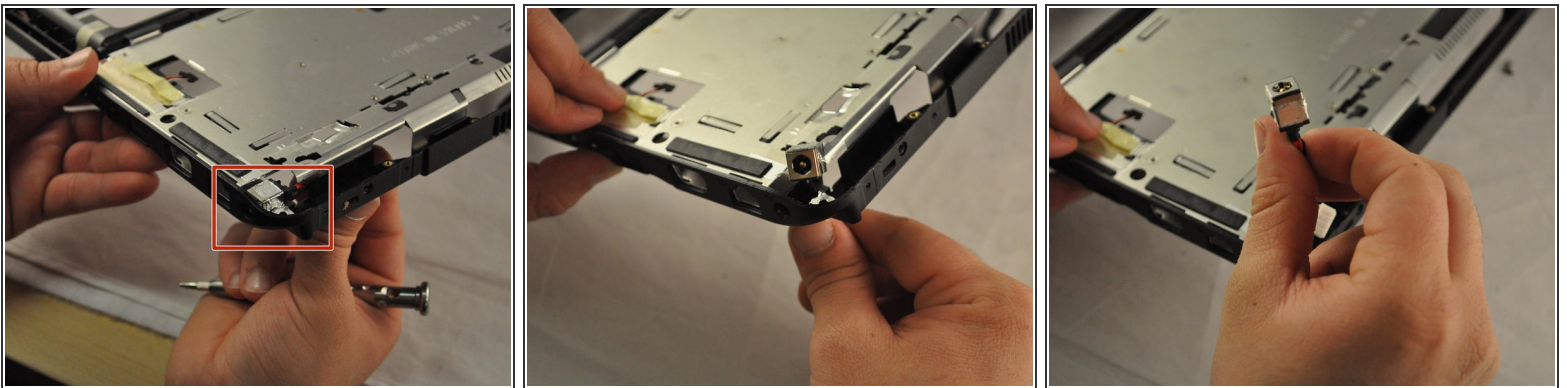
- Using the PH 1 screwdriver, remove the .75 cm screw from the bottom-middle section where the keyboard was previously covering.

## Step 37



- Lift the front cover off of the laptop.

## Step 38



- Flip the laptop back over. The charging port will be located in the top-right corner.

To reassemble your device, follow these instructions in reverse order.