



# HP Envy TouchSmart m7 k010dx Screen Replacement

This guide will walk you through the process of...

Written By: Owen Ou



# INTRODUCTION

This guide will walk you through the process of replacing a screen in the HP Envy TouchSmart m7 k010dx.

- A screen would need to be replaced if it is cracked, dead, or displays horizontal lines from end to end.
- A screen that is functioning properly will have a clear, crisp display.
- Before you begin, unplug the device and completely power it down.

---

## TOOLS:

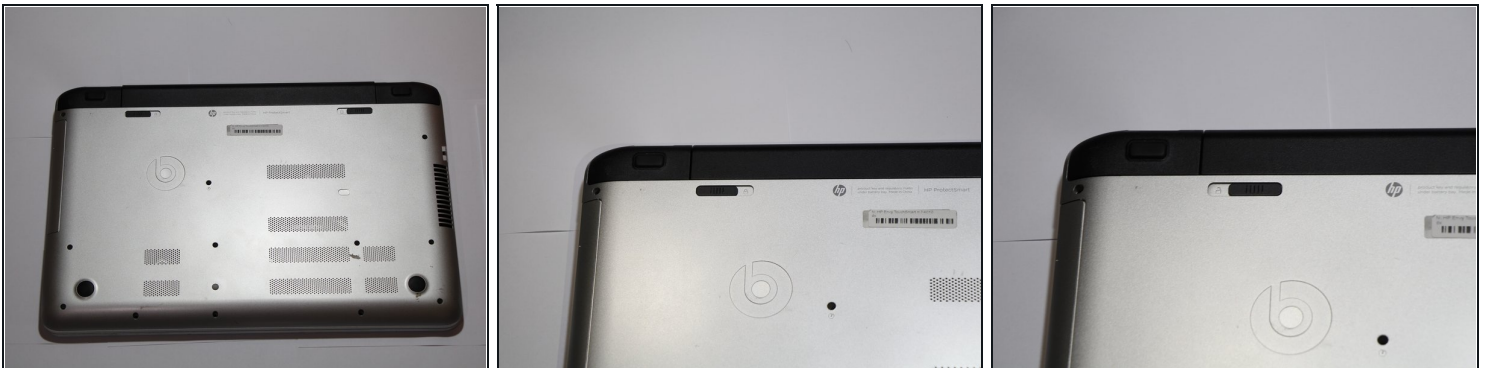
[Plastic Cards](#) (1)  
[iFixit Opening Tool](#) (1)  
[Phillips #0 Screwdriver](#) (1)  
[JIS #000 Screwdriver](#) (1)  
[Spudger](#) (1)  
[Tweezers](#) (1)

## PARTS:

[New Display Panel](#) (1)

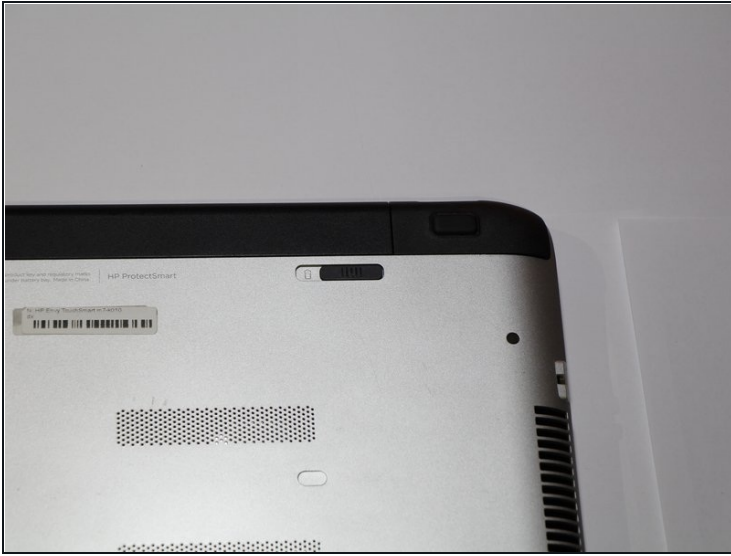
---

## Step 1 — Battery



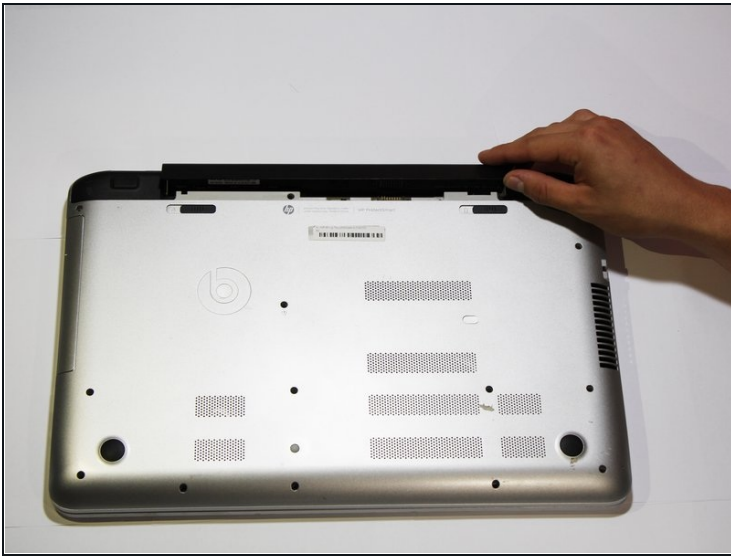
- Turn your computer over so that the bottom is facing up.
- Slide the left black switch towards center.
- You should see an unlock image exposed to the left of switch if done correctly.

## Step 2



- Slide the right black switch towards center to release the battery.

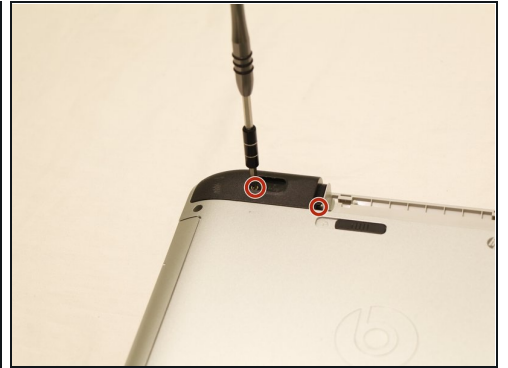
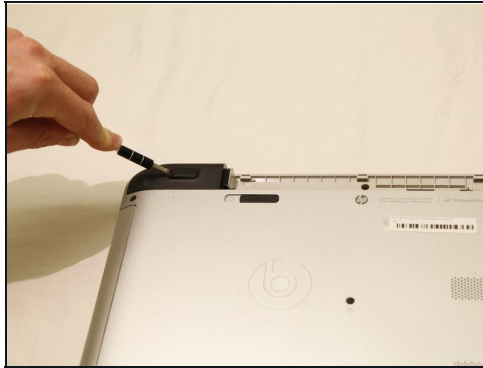
## Step 3



- Pivot the loose edge of the battery closes to you by pushing it toward the back of the computer.
- The battery should slide out freely.

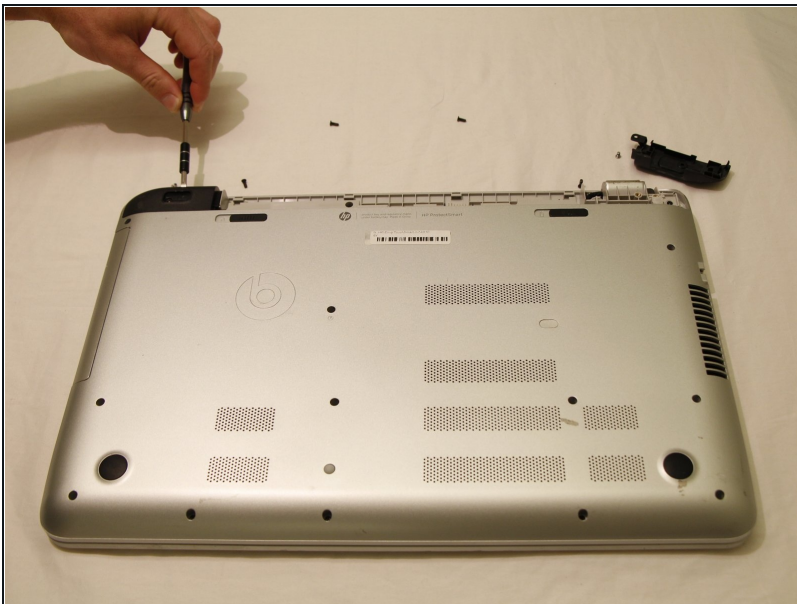
⚠ If battery is not pivoted before sliding out, you risk breaking interlocking tabs on the battery or computer.

## Step 4 — Keyboard



- With the computer turned over use a nylon spudger to pry the rectangular pads off to reveal two hidden screws.
- Using a Phillips #0 screwdriver, remove the screw that is beneath the black rubber pad, as well as the other holding down the black corner plastic pieces on both the left and right sides.

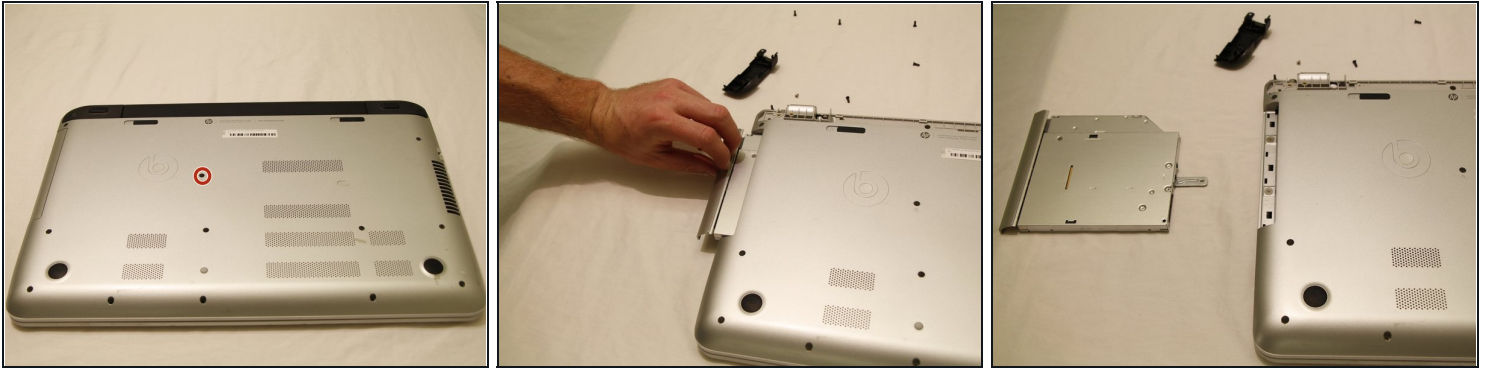
## Step 5



- Use a plastic opening tool to pop the corners off by wedging between casing. Do this for both legs as depicted in the picture.

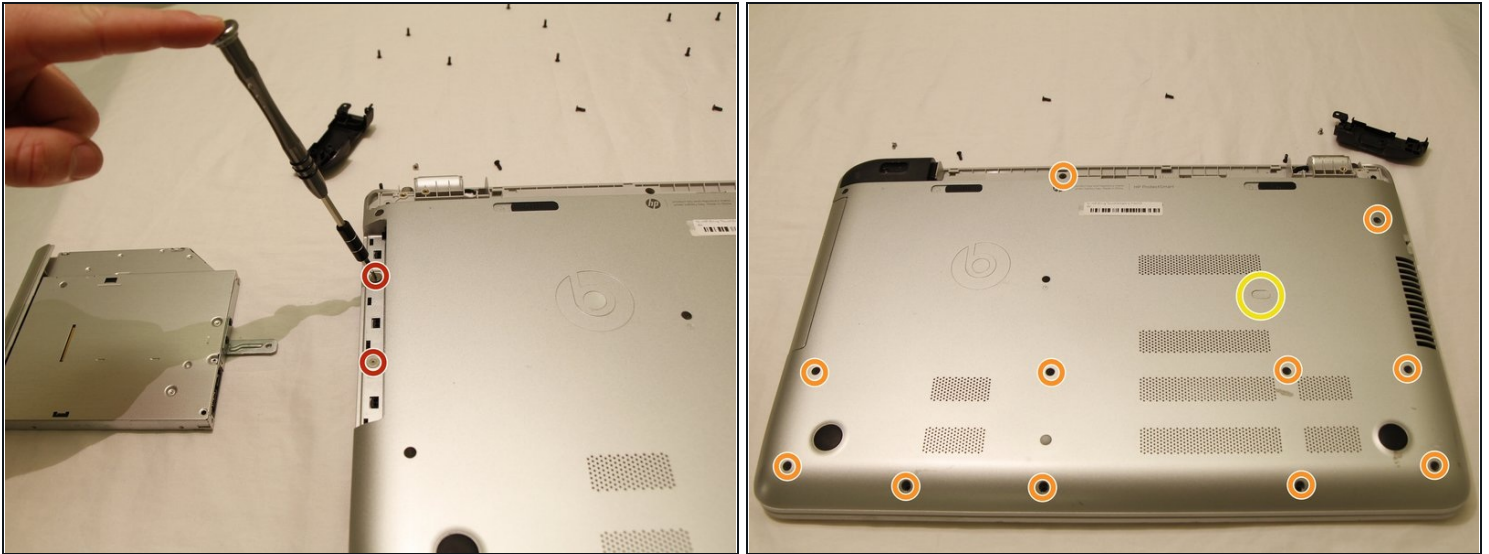


## Step 6



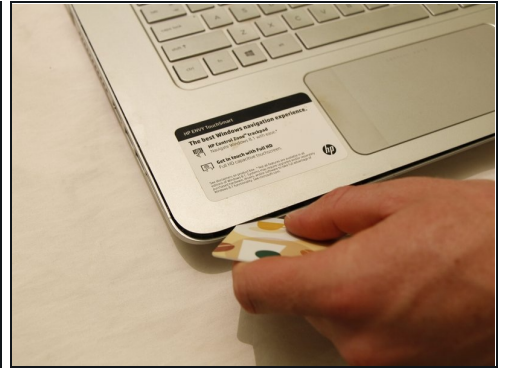
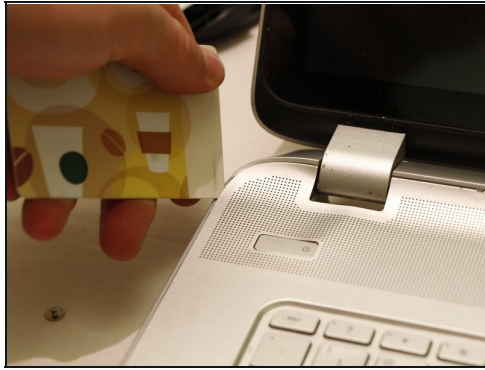
- Using the Phillips #0 screwdriver, remove the screw in the center of the computer, and to the right of the Beats logo.
- Use your fingernails to pull out the optical drive. It will have some resistance to start, but will come out easily afterwards.

## Step 7



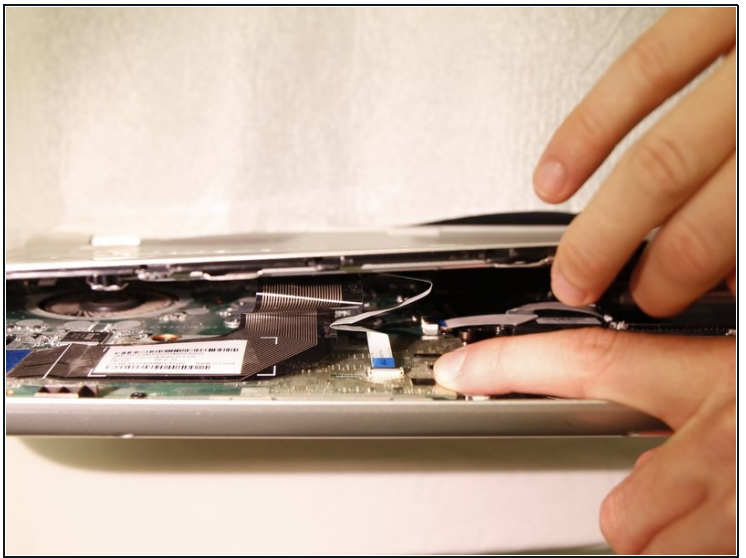
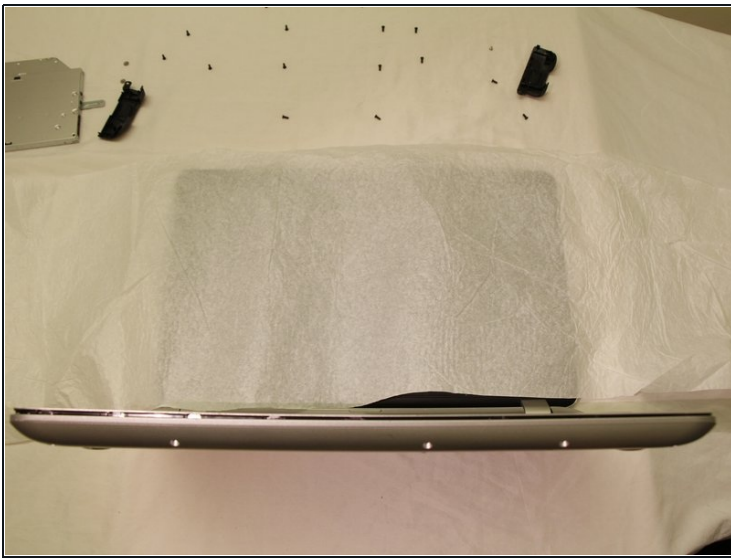
- Using a JIS #00 screwdriver, remove the two screws that were revealed when the optical drive was removed.
- Use a Phillips #0 screwdriver to remove all screws that are visible on the bottom.
- There is an oval tab near the center of the laptop, use the flat end of a nylon spudger to wedge it free to reveal another Phillips #0 screw.

## Step 8



- Open up the laptop and set it down normally.
- Use a credit card or spudger to wedge between the top and bottom keyboard casing.
- Slide the card all the way around the laptop, making sure to pop free all tabs.

## Step 9



- Place the computer on the backside of the screen, so that the bottom of it is pointing up into the air.
  - ❗ You may want to place a rag over the screen so that if the front panel touches it while being removed, no damage is caused.
- Carefully begin to separate the top case from the bottom case, as if you are opening it like a book from the edge nearest the touch pad.

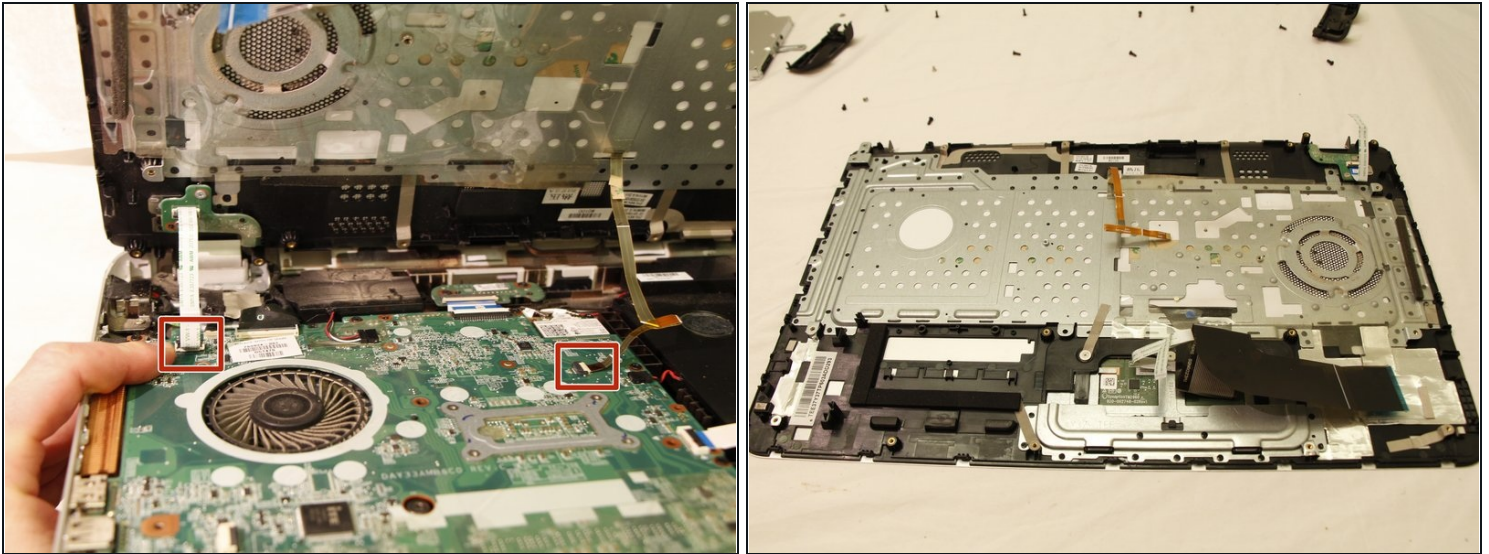


## Step 10



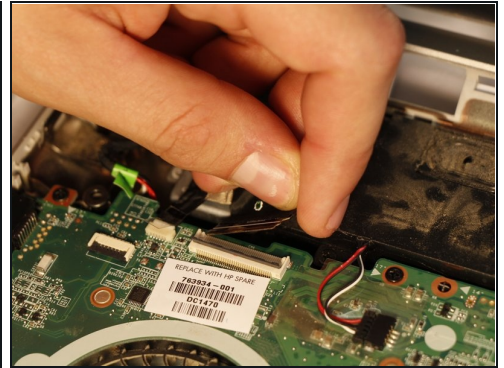
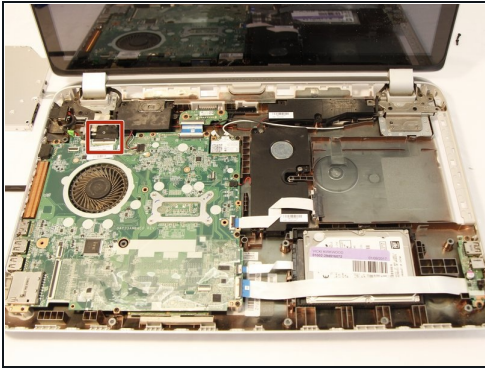
- The two panels are connected with 4 flexible electrical ribbon strips. The ribbon strips have a locking tab that will need to be disengaged prior to removal. Using fingers, begin by removing the two strips nearest to the opening.
- Picture 3 shows the tab unlocked

## Step 11



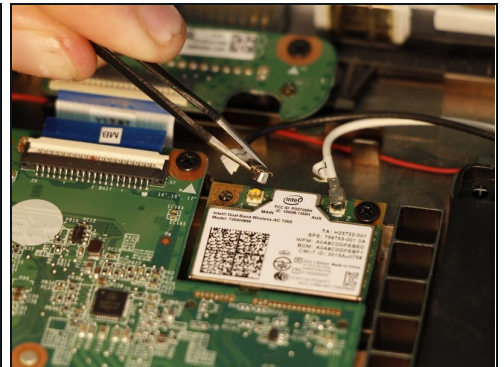
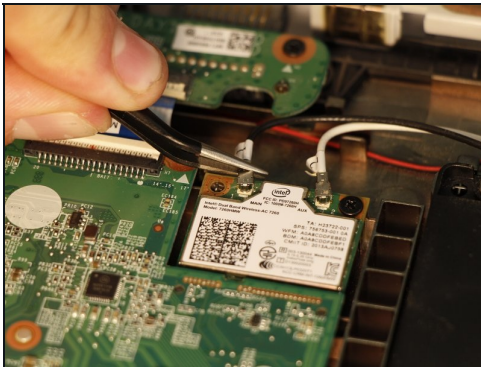
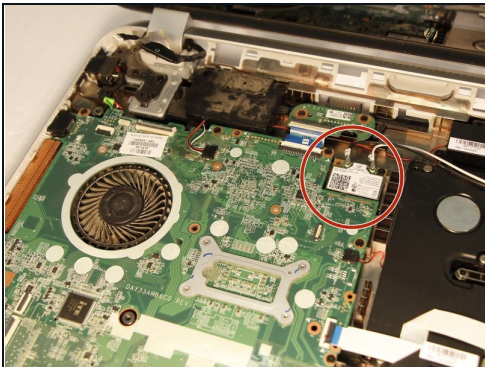
- With the two panels now separated, you can see the other two strips towards the back of the computer. With finger, carefully release each strip from the locking tab.
- Once all are unplugged, carefully remove the top case.

## Step 12 — Screen



- With [tweezers](#) in hand, begin by disengaging the tab on the upper left corner of the motherboard. Using your fingers, disconnect the plug that is to the left of the tab.

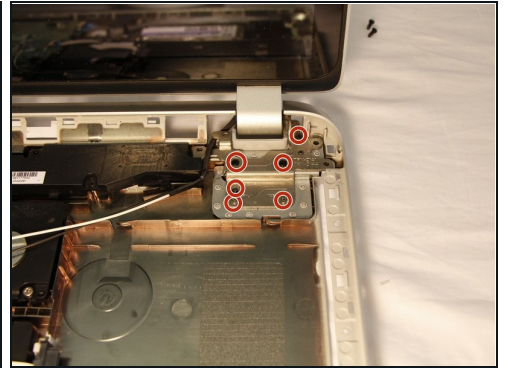
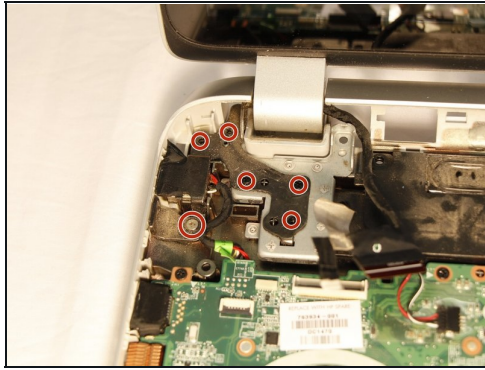
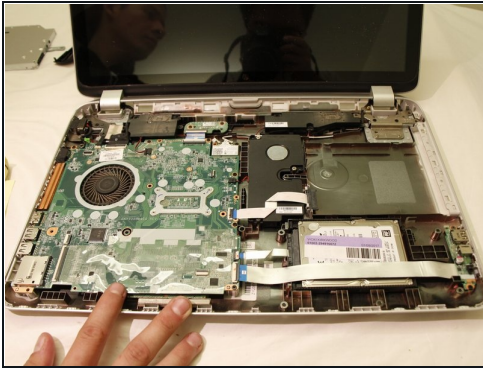
## Step 13



- Using tweezers, gently remove the two cables connected to the WLAN module.

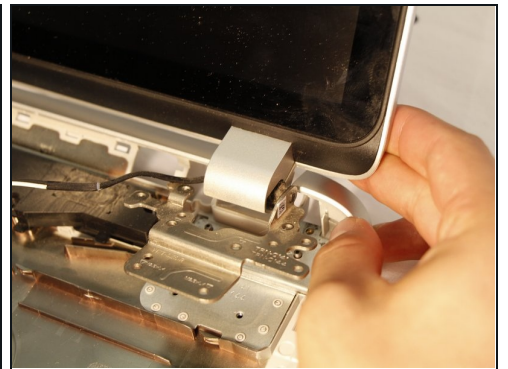


## Step 14



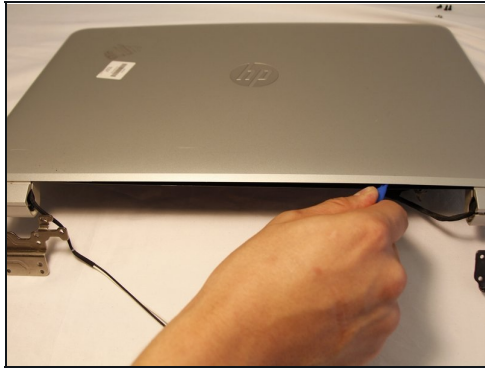
- Using a JIS #00 screwdriver, remove the screws holding the hinges in place.
- ① On the left hinge, there is a screw that does not appear to belong to hinge but is (circled in picture).

## Step 15



- Remove the screen by pulling it forward from the casing. This allows the hinges to clear the casing.

## Step 16



- Use a plastic opening tool along the gap between the screen and the back panel to separate the two pieces.

⚠ When sliding with plastic opening tool, be careful around the webcam location to prevent damage.

## Step 17



- Carefully separate the display unit from its back panel.
- ☑ There is glue between the two pieces, make sure you move slowly.
- Flip the display unit over. Slowly remove the output cable from clips holding it in place.
- To remove the two strip running to top of display simply lift to loosen the tack glue holding them in place.

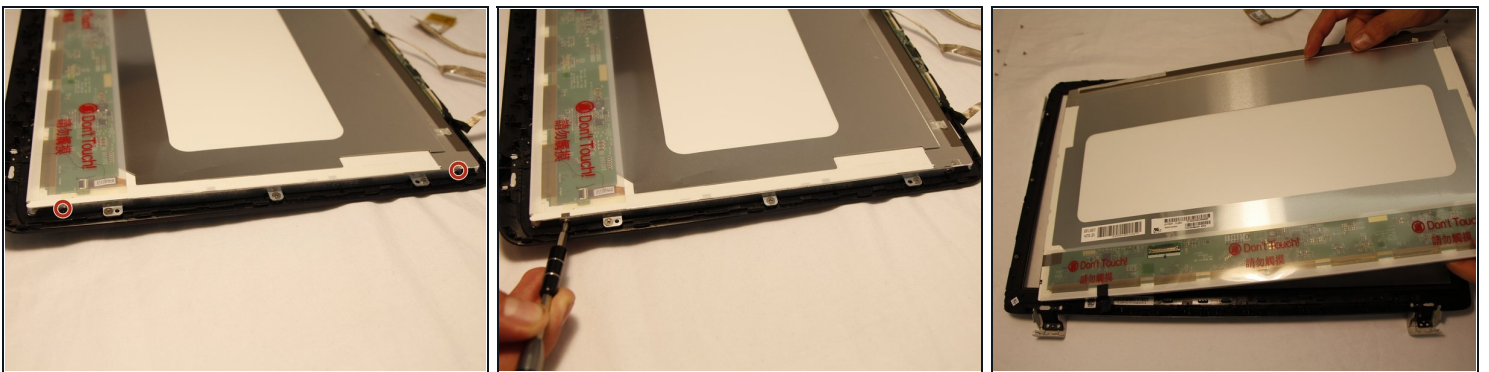
## Step 18



- Use the spudger or your finger to remove the tape on the output connection.
- Slowly and carefully pull the cable out from the connection.

⚠ Permanent damage can be caused on your computer if you pull the cable too hard.

## Step 19



- To remove the screen from its bezel there are a total of 4 Phillips head screws. 2 on left and 2 on right of the display unit.
- Use a Phillips #0 screwdriver to remove the screws.
- The display unit can now be taken out freely.

---

To reassemble your device, follow these instructions in reverse order.